

PLEASE CHECK WWW.MOLEX.COM FOR LATEST PART INFORMATION

Part Number: **0008700057**
Status: **Active**
Overview: spox_bmi
Description: SPOX™ Crimp Terminal 5103, 22-28 AWG, Bag, Brass (CuZn), Loose Type, Lead Free

Documents:

| | |
|---|---|
| Drawing (PDF) | Product Specification PS-5102-008 (PDF) |
| Product Specification PS-5045-001 (PDF) | Product Specification PS-5103-001 (PDF) |
| Product Specification PS-5045-002 (PDF) | Product Specification PS-5103-002 (PDF) |
| Product Specification PS-5102-002 (PDF) | RoHS Certificate of Compliance (PDF) |
| Product Specification PS-5102-004 (PDF) | |

General

| | |
|-------------------------|-----------------|
| Product Family | Crimp Terminals |
| Series | 5103 |
| Crimp Quality Equipment | Yes |
| Overview | <u>spox_bmi</u> |
| Product Name | SPOX™ |

Physical

| | |
|--------------------------------|----------------------|
| Durability (mating cycles max) | 30 |
| Gender | Female |
| Material - Metal | Brass |
| Material - Plating Mating | Tin |
| Material - Plating Termination | Tin |
| Packaging Type | Bag |
| Plating min: Mating (µin) | 35 |
| Plating min: Mating (µm) | 0.88 |
| Plating min: Termination (µin) | 35 |
| Plating min: Termination (µm) | 0.88 |
| Termination Interface: Style | Crimp or Compression |
| Wire Insulation Diameter | 1.90mm (.075") max. |
| Wire Size AWG | 22, 24, 26, 28 |
| Wire Size mm² | N/A |

Electrical

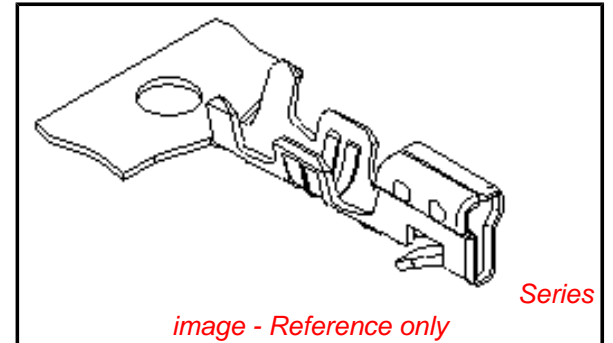
| | |
|-------------------------------|------|
| Current - Maximum per Contact | 3A |
| Voltage - Maximum | 250V |

Material Info

| | |
|-----------------|--------|
| Old Part Number | 5103TL |
|-----------------|--------|

Reference - Drawing Numbers

| | |
|-------------------------|---|
| Packaging Specification | SPK-5103 |
| Product Specification | PS-5045-001, PS-5045-002, PS-5102-002, PS-5102-004, PS-5102-008, PS-5103-001, PS-5103-002, RPS-35155-101, RPS-35155-102 |
| Sales Drawing | SD-5103-002 |



EU RoHS

ELV and RoHS Compliant
REACH SVHC
Contains SVHC: No
Halogen-Free Status

China RoHS



Need more information on product environmental compliance?

Email productcompliance@molex.com
 For a multiple part number RoHS Certificate of Compliance, [click here](#)

Please visit the [Contact Us](#) section for any non-product compliance questions.

Search Parts in this Series

[5103Series](#)

Use With

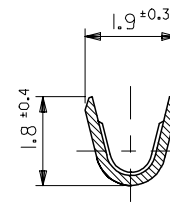
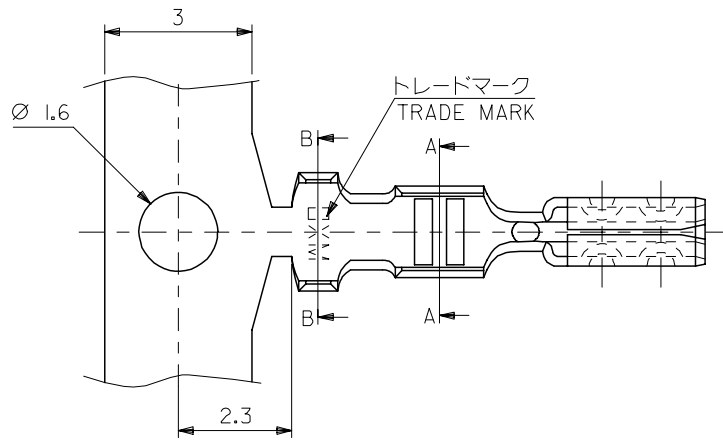
[5102](#) Crimp Housing, [5207](#) Mini SPOX Housing

Application Tooling | FAQ

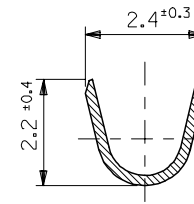
Tooling specifications and manuals are found by selecting the products below. Crimp Height Specifications are then contained in the Application Tooling Specification document.

Global

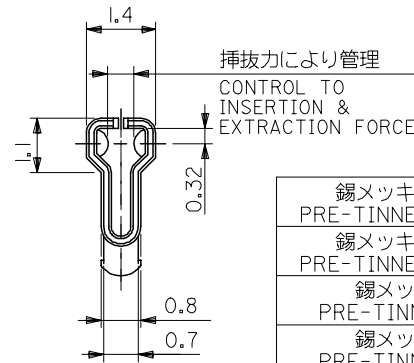
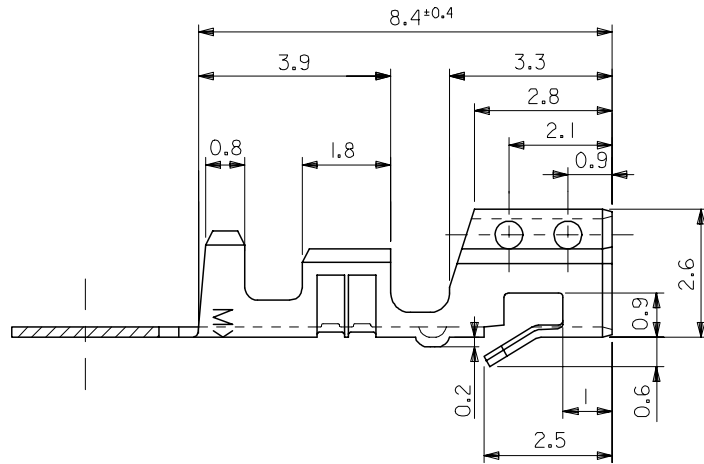
| Description | Product # |
|------------------------|----------------------------|
| Hand Crimp Tool | 0638115200 |
| Manual Extraction Tool | 0638131500 |



断面 A-A
SECT. A-A



断面 B-B
SECT. B-B



注記 NOTES:

1. 適合ハウジング:
APPLICABLE HOUSING:
5102-N,5207-N,5208-N,5209-N

| | | | |
|-----------------------------------|------------|----------|--------------|
| 錫メッキ済リン青銅 PRE-TINNED PHOS-BRO. | 08-70-0059 | 5103PBTL | バラ状 LOOSE |
| 錫メッキ済リン青銅 PRE-TINNED PHOS-BRO. | 08-70-0058 | 5103PBT | 連鎖状 CHAIN |
| 錫メッキ済黄銅 PRE-TINNED BRASS | 08-70-0057 | 5103TL | バラ状 LOOSE |
| 錫メッキ済黄銅 PRE-TINNED BRASS | 08-70-0056 | 5103T | 連鎖状 CHAIN |
| 材料 MATERIAL | EDP NO. | ENG. NO. | 端子形状 FORM |

| | |
|----------------------|---------------------------------------|
| 材料 MATERIAL | 表参照 (t=0.203) SEE TABLE |
| 適用電線範囲 WIRE RANGE | AWG#22~28 0.33~0.08mm ² |
| 被覆外径 INS. RANGE | Ø1.15 ~ Ø1.9 |

| | | |
|---------|-------------------|------------|
| REVISED | EC NO: J2006-3417 | 2006/07/31 |
| | DRWN:KSAIT001 | 2006/08/04 |
| | CHKD:MTANAKA | 2006/08/04 |
| | APPR:NUKITA | 2006/08/07 |
| N | | |

| | |
|--|-------|
| GENERAL TOLERANCES (UNLESS SPECIFIED) | |
| 10 UNDER | ±0.2 |
| 10 OVER 30 UNDER | ±0.25 |
| 30 OVER | ±0.3 |
| ANGULAR | ±3 ° |
| DRAFT WHERE APPLICABLE MUST REMAIN WITHIN DIMENSIONS | |

| | |
|----------------------------|--------------------|
| DIMENSION STYLE MM ONLY | |
| DRAWN BY K.TOJO | DATE 1990/12/25 |
| CHECKED BY H.HIRAMOTO | DATE 1996/03/04 |
| APPROVED BY M.FUKUSHIMA | DATE 1996/03/04 |
| MATERIAL NO. SEE CHART | |
| SIZE A3 | |

| | | |
|--|-----------------------------|---------------------------|
| SCALE 10:1 | DESIGN UNITS METRIC | THIRD ANGLE PROJECTION |
| TITLE MINI SPOX CRIMP REC | | |
| MOLEX INCORPORATED | | |
| MATERIAL NO. SEE CHART | DOCUMENT NO. SD-5103-002 | SHEET NO. 1 OF 1 |
| THIS DRAWING CONTAINS INFORMATION THAT IS PROPRIETARY TO MOLEX INCORPORATED AND SHOULD NOT BE USED WITHOUT WRITTEN PERMISSION | | |