

PLEASE CHECK WWW.MOLEX.COM FOR LATEST PART INFORMATION

Part Number: [0350281111](#)
Status: **Active**
Description: 1.78mm (.070") Tab Terminal, Female, 14-20 AWG (2.08-0.52mm²), Pre-Tin Plated, Reel

Documents:

[Drawing \(PDF\)](#) [Product Specification PS-35316-001 \(PDF\)](#)
[Product Specification PS-35314-001 \(PDF\)](#) [RoHS Certificate of Compliance \(PDF\)](#)

General

Product Family Crimp Terminals
 Series [35028](#)
 Crimp Quality Equipment Yes
 Product Name N/A

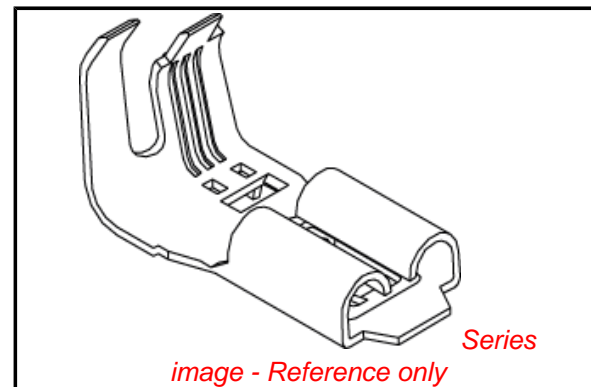
Physical

Gender Female
 Material - Metal Phosphor Bronze
 Material - Plating Mating Tin
 Material - Plating Termination Tin
 Packaging Type Reel
 Plating min: Mating (µin) 32.00
 Plating min: Mating (µm) 0.800
 Plating min: Termination (µin) 32.00
 Plating min: Termination (µm) 0.80
 Termination Interface: Style Crimp or Compression
 Wire Insulation Diameter 3.60mm (.142") max.
 Wire Size AWG 14, 16, 18, 20
 Wire Size mm² N/A

Material Info

Reference - Drawing Numbers

Product Specification PS-35314-001, PS-35316-001
 Sales Drawing SD-35028-****



EU RoHS

ELV and RoHS Compliant
REACH SVHC Contains SVHC: No
Halogen-Free Status

China RoHS



Need more information on product environmental compliance?

Email productcompliance@molex.com
 For a multiple part number RoHS Certificate of Compliance, [click here](#)

Please visit the [Contact Us](#) section for any non-product compliance questions.

Search Parts in this Series

[35028Series](#)

Mates With

1.78mm (.070") Male Tab

Use With

[35159](#)

Application Tooling | FAQ

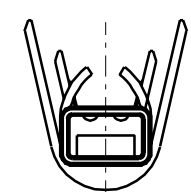
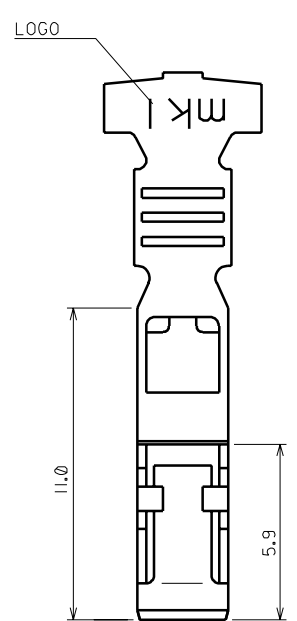
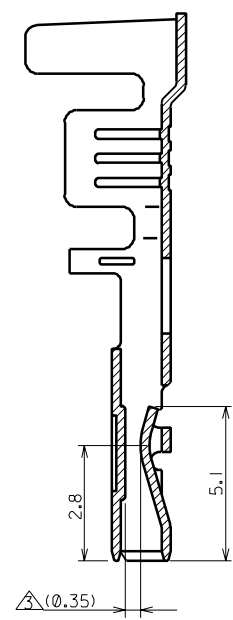
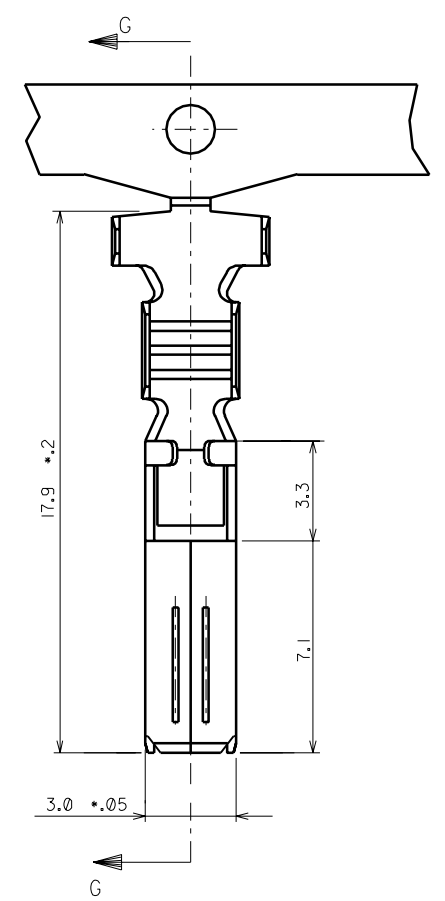
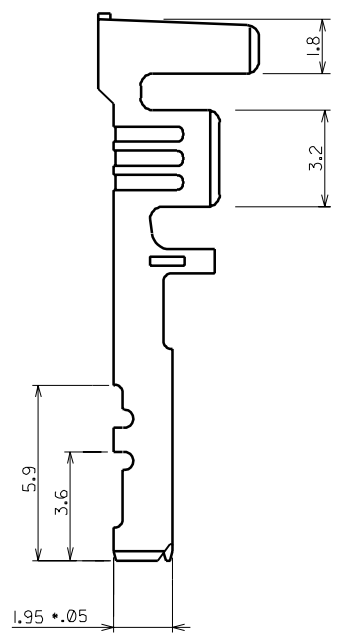
Tooling specifications and manuals are found by selecting the products below. Crimp Height Specifications are then contained in the Application Tooling Specification document.

Global

Description	Product #
FineAdjust™ Applicator	0639001800

DO NOT SCALE DRAWING
DIMENSION IN METRIC

PROJECT NO. SIMILAR ITEM DWG. NO. SD-35028-*****



NOTES

1. MATERIAL: PHOSPHOR BRONZE
THICKNESS : 0.30 ± 0.02
WIDTH : 22.8 ± 0.08
2. PLATING: PREPLATING (REFLOW TREATMENT)
3. MALE TAB (THICK 0.6 ± 0.05) FIT.
- INSERTION FORCE: 0.8kgf. MAX.
- RETENTION FORCE: 0.3kgf. MIN.
4. WIRE SIZE : AWG #20 × 2 35028-9502
AWG #18 ± #22 35028-9010
AWG #14 ± #20 35028-1111

REVISED EC NO. KOR2002-0074 DRWN: C.B.CHIN 02/02/19 CHK: W.Y.YANG APPR: C.W.LEE	DESCRIPTION MAJOR CRITICAL	QUALITY SYMBOLS		GENERAL TOLERANCES: (UNLESS SPECIFIED)	SCALE 6:1	DESIGN UNITS <input checked="" type="checkbox"/> mm <input type="checkbox"/> INCH	THIRD ANGLE PROJECTION	DIMENSIONS: <input type="checkbox"/> mm <input type="checkbox"/> INCH <input checked="" type="checkbox"/> mm ONLY	SHT	REV
		4 PLACES	±0.	±.	DRAWN BY & DATE H.J.KIM 94/06/25	TITLE: .070 FEMALE TERMINAL				
H	REV	3 PLACES	±0.	±.	CHECKED BY & DATE B.K.CHOI 94/06/25	MOLEX MOLEX INCORPORATED				
		2 PLACES	±0.15	±.	APPROVED BY & DATE	CAD FILENAME S35028.DGN	MATERIAL NO. SEE NOTES	DRAWING NO. SD-35028-****	SHEET NO. IOF 1	SIZE B
		1 PLACE	±0.15	±.	ANGULAR: ± 0.5°		THIS DRAWING CONTAINS INFORMATION THAT IS PROPRIETARY TO MOLEX INCORPORATED AND SHOULD NOT BE USED WITHOUT WRITTEN PERMISSION.			MX-A3
DRAFT WHERE APPLICABLE MUST REMAIN WITHIN DIMENSIONS										