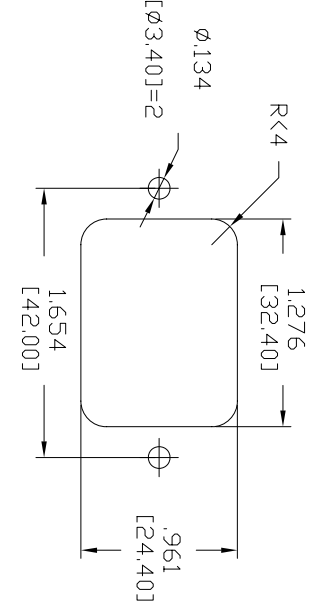
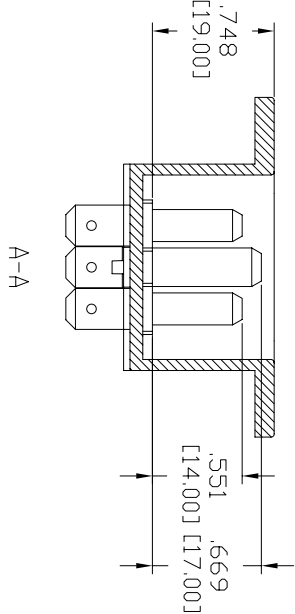
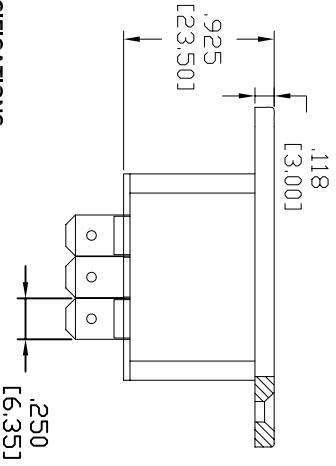
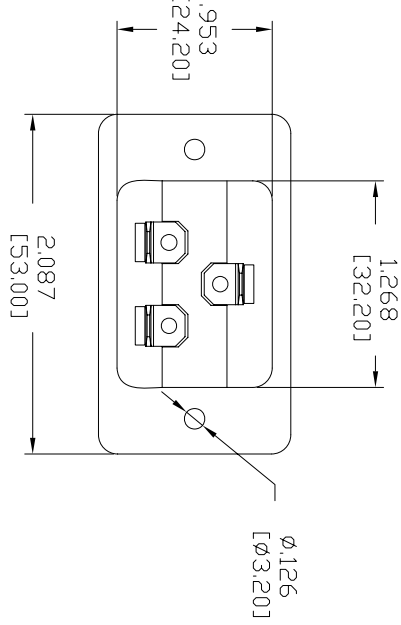
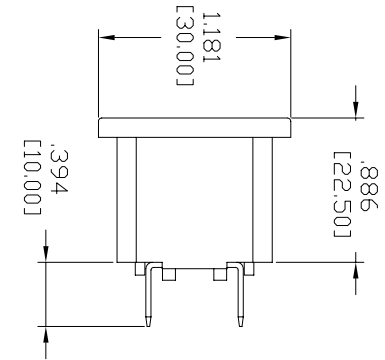
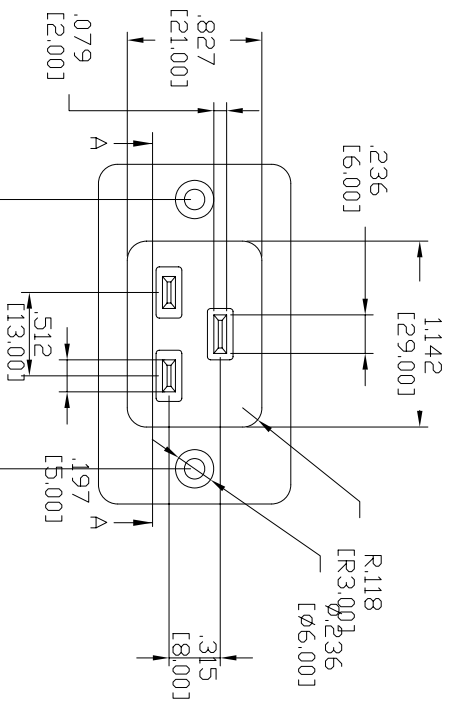


Rev	AWO #	Description	Date	Appr
-		RELEASED	9/15/06	

APPROVED: _____
 DATE: _____ TITLE: _____



RECOMMENDED
 PANEL CUT-OUT

SPECIFICATIONS:

Material: G.F. PBT rated UL 94V-0, black
Insulator: Brass QQ-B-626

Plating: Contacts/Terminals: 50 μ m bright nickel to QQ-N-290, Class 2, Grade C

Electrical: Operation voltage: 250 VAC max
 Current rating: 20A max UL/CSA 16A max VDE
 Contact resistance: 20 mohm max
 Insulation resistance: 100 Mohm min @ 500 VDC between adjacent contacts (75°F and 50% R.H.)
 Dielectric withstanding voltage: 2000 VAC min rms

Environmental: Operating temperature: -65°C to +85°C
Packaging: Anti-static plastic bags or corrugated boxes
Environmental: Lead free, RoHS compliant.

UNLESS OTHERWISE SPECIFIED ALL DIMENSIONS ARE INCHES [MM]	
TOLERANCES: EXCEPT AS NOTED	
INCHES	HOLES
.X ± .10	Ø.X ± .10
.XX ± .020	Ø.XX ± .015
.XXX ± .015	Ø.XXX ± .010
APPROVALS	DATE
DRAWN	SS
CHECKED	
APPROVED	

ADAM TECH
 909 Rahway Avenue, Union, NJ 07083
 Phone: 908-687-5000 Fax: 908-687-5710

TITLE	IEC MALE, 20 AMP, PANEL MOUNT
SIZE	250 QC
PART NO.	IEC-N-2
SCALE:	NTS
SHEET	1 OF 1