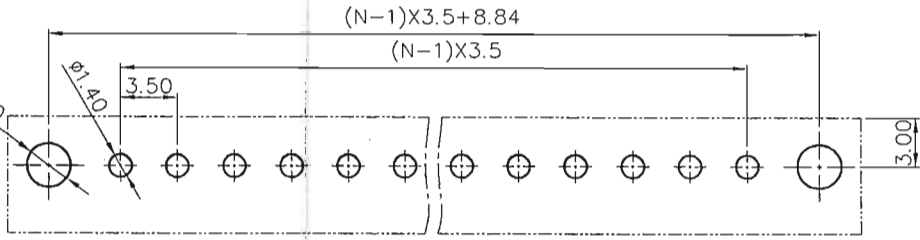
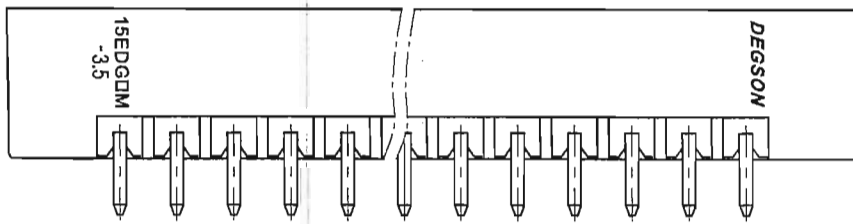
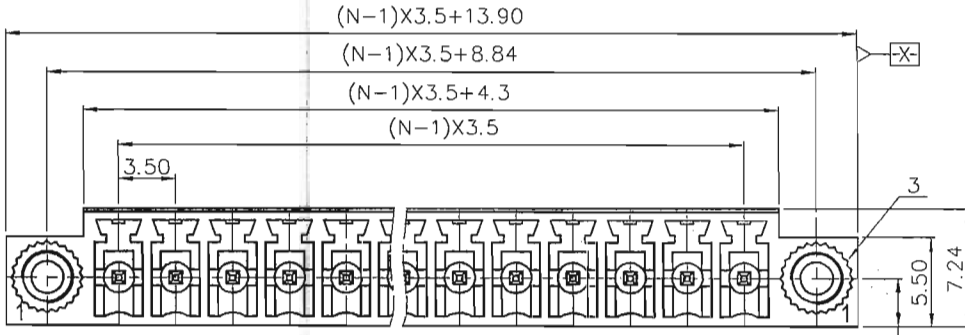
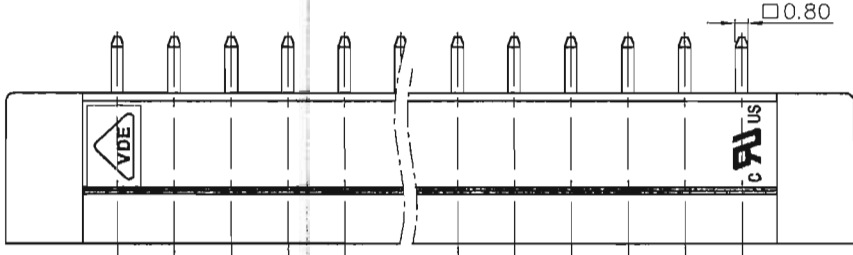
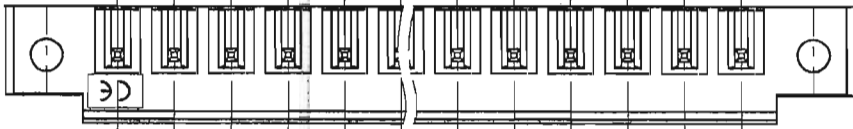


REVISION RECORD				
REV	ECN	DESCRIPTION	DRFT	DATE



PCB LAYOUT

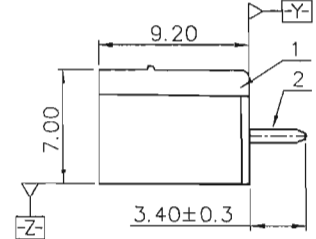
NOTES1:
 UL Standard
 1. Rated Voltage/Current : 300V / 8A
 2. Withstanding Voltage : AC1600V/1Min.

VDE Standard

- | | |
|--------------------------|-------|
| Pollution Degree | 2 |
| Overtoltage Category | II |
| Rate Impulse Voltage(KV) | 2.5KV |
| Rate Voltage(V) | 250V |
| Rate Current(A) | 7A |

NOTES2:
 1. Dimension shall be interpreted per ASME Y14.5-2009
 2. Pitch : 3.50mm, Poles : N=2~22P
 3. Operating temperature: -40°C~+105°C
 4. Undimensioned Tolerances:

Pitch Range In mm	Nominal Dimension Range In mm				0.1/10		
	Over 6 TO 10	Over 10 TO 24	Over 30 TO 60	Over 60 TO 150			
±0.15	±0.20	±0.30	±0.50	±0.70	±1.00	±1.30	±2*



5. RoHS Compliance



ITEM	NAME OF PART	MATERIAL	NOTES
3	SCREW CAP	BRASS	
2	PIN	BRASS	Sn Plated
1	HOUSING	PA66	UL94V-0

PART NO.: /

APPD: *Aaron/olyon*

CHKD: *Xm19/15*

DRFT: Yz 10/13/15"

DEGSON® NINGBO DEGSON ELECTRICAL CO., LTD

NAME: 15EDGVM-3.5-XXP-1Y-00A(H)

TITLE: CUSTOMER DRAWING

DRAWING NO.: 15EDGVM-3.5-C01

THIRD ANGLE PROJECTION

REV	T0
SHEET	1/1
SCALE	1:1

DO NOT SCALE DRAWING