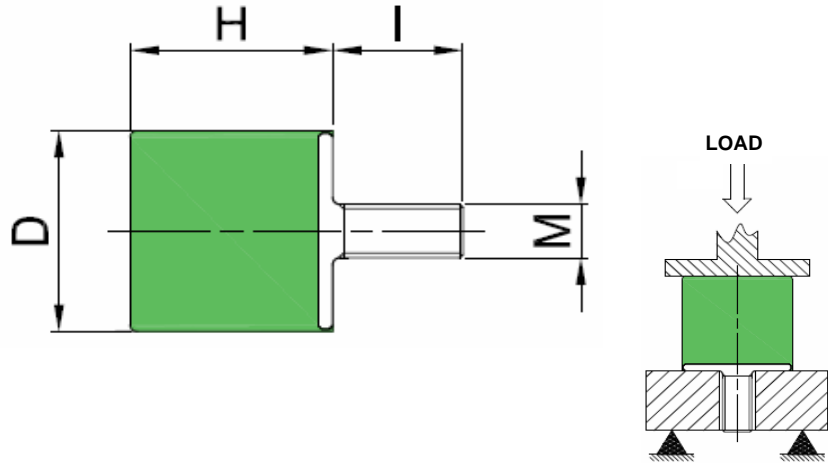
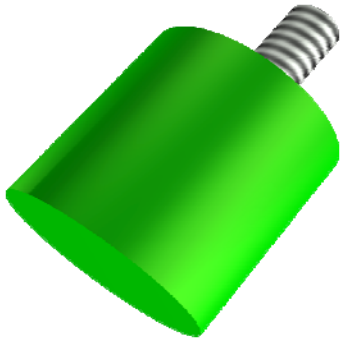




Bobbin Mount End Stop - Type VE (Male)



The Type VE Bobbin Mount End Stops are designed to be used on a wide range of applications to prevent shocks and over-loading thanks to their progressive absorption.

They are manufactured from Natural Rubber in a variety of hardnesses to suit the application, and have a zinc plated steel end section with either welded or cold formed threads.

This range comes with a Male thread on one end.

Farnell Ref:	Fibet Ref:	D	H	M x I	IRHD	Stiffness (DaN/mm)	Max. Static Deflection (mm)	Maximum Stiffness (DaN)
1471947	0808VE06-45	8	8	M3 X 6	45	2.9	1.6	4.6
4997220	1008VE10-45	10	8	M4 X 10	45	3.6	1.6	5.8
4997244	2020VE18-60	20	20	M6 X 18	60	7.4	4.0	29.6
4997256	2515VE18-45	25	15	M6 X 18	45	13.8	3.0	41.4
4997268	2515VE18-60	25	15	M6 X 18	60	26.4	3.0	79.2
4997270	2520VE18-60	25	20	M6 X 18	60	17.7	4.0	70.8
4997281	4027VE23-60	40	27	M8 X 23	60	26.0	5.4	140.4
4997293	4035VE23-45	40	35	M8 X 23	45	9.0	7.0	63.0
4997359	7530VE37-70	75	30	M12 X 37	70	229.5	6.0	1377.0