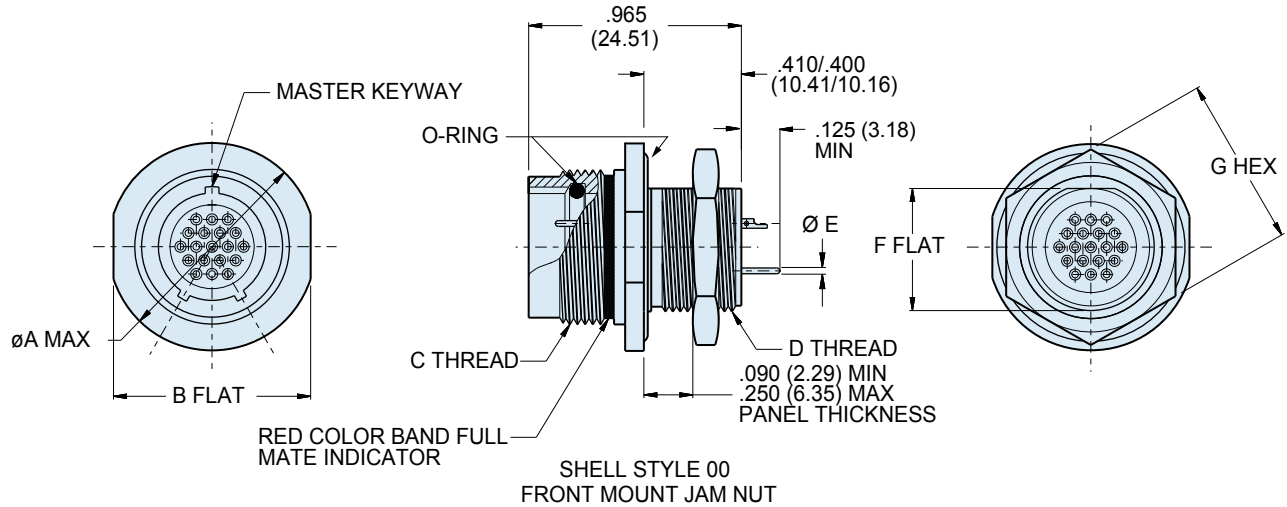


Series 802 AquaMouse™ Submersible
Solder Cup or PCB Receptacle
802-012-00 and 802-030-00 Dimensions



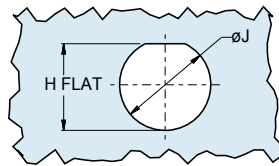
Series 802

Front panel mount jam nut receptacle - shell style 00



Dimensions											
Shell Size	Ø A Max.		B Flat		C Mating Threads	D Threads	Ø E Tail Dia.	F Flat		G Hex	
	In.	mm.	In.	mm.				In.	mm.	In.	mm.
5	.72	18.29	.625	15.88	.4375-28 UNEF-2A	.312-28 UN-2A	#23 (0.46/0.56)	.281	7.14	.500	12.70
6	.78	19.81	.750	19.05	.5625-20 UN-2A	.438-28 UN-2A		.018/.022	.344	8.74	.625
7	.91	23.11	.812	20.62	.6250-20 UN-2A	.500-32 UN-2A	#20 (0.61/0.71)	.469	11.91	.688	17.48
8	.96	24.38	.875	22.23	.6875-20 UN-2A	.562-28 UN-2A		.024/.028	.531	13.49	.750
9	1.03	26.16	.937	23.80	.7500-20 UNEF-2A	.625-28 UN-2A	#16 (1.52/1.63)	.594	15.09	.812	20.62
10	1.09	27.69	1.000	25.40	.8125-20 UNEF-2A	.687-28 UN-2A		.060/.064	.656	16.66	.875
12	1.16	29.46	1.062	26.97	.8750-20 UNEF-2A	.750-28 UN-2A	#12 (2.34/2.44)	.719	18.26	.938	23.83
14	1.34	34.04	1.250	31.75	1.0625-20 UN-2A	.938-28 UN-2A		.092/.096	.893	22.68	1.125
15	1.41	35.18	1.312	33.32	1.1250-20 UN-2A	1.000-28 UN-2A	(2.34/2.44)	.955	24.26	1.188	30.18
21	1.70	43.18	1.562	39.67	1.4375-20 UN-2A	1.312-28 UN		1.257	31.93	1.500	38.10

Cutout Dimensions					
Shell Size	H Flat		Ø J		
	In.	mm.	In.	mm.	
5	.291/.286	7.4/7.3	.322	8.2	
6	.417/.412	10.6/10.5	.448	11.4	
7	.479/.474	12.2/12.0	.510	13.0	
8	.541/.536	13.7/13.6	.572	14.5	
9	.604/.599	15.3/15.2	.635	16.1	
10	.666/.661	16.9/16.8	.697	17.7	
12	.729/.724	18.5/18.4	.760	19.3	
14	.903/.898	22.9/22.8	.948	24.1	
15	.965/.960	24.5/24.4	1.010	25.7	
21	1.267/1.263	32.2/32.1	1.322	33.6	



RECOMMENDED PANEL CUTOUT FOR STYLE 00 FRONT MOUNT JAM NUT

Dimensions in Inches (millimeters) are subject to change without notice.