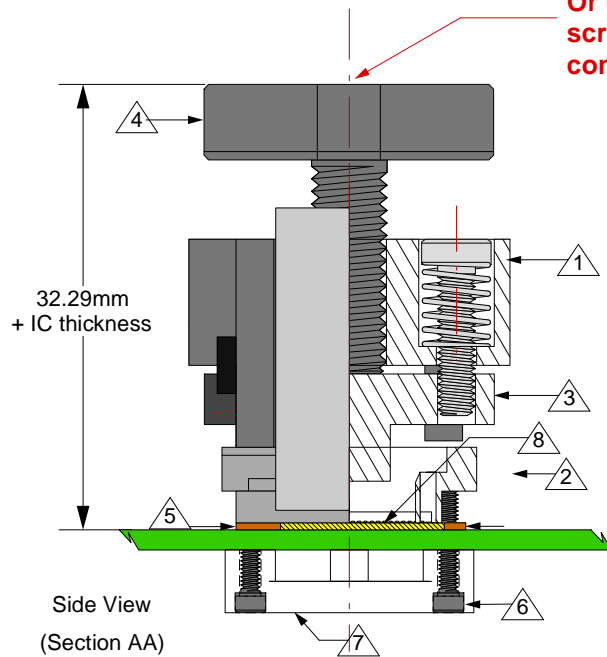


Top View

**Recommended torque is 24 in oz.
Or using hex key, turn the compression
screw clockwise one half a turn (after screw,
compression plate and BGA IC make contact).**




Side View
(Section AA)

Features

- Directly mounts to target PCB (needs tooling holes) with hardware.
- Minimum real estate required
- Compression plate distributes forces evenly
- Clamshell lid
- Minimum real estate required
- High speed, reliable Elastomer connection

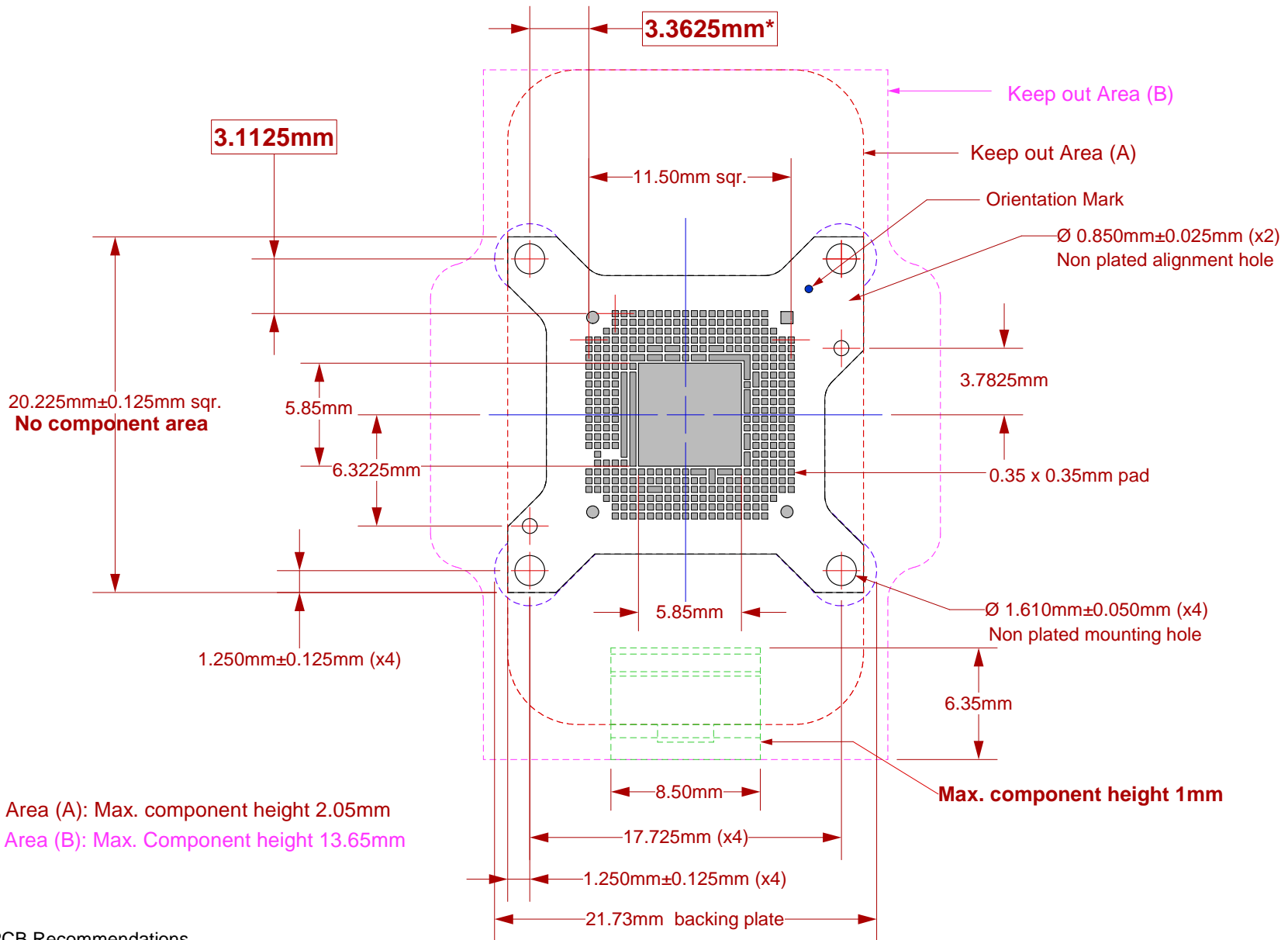
Materials:

- 1 Clam Shell Lid: Black anodized Aluminum. Height = 20 mm.
- 2 Socket Base: Black anodized Aluminum. Height = 6 mm.
- 3 Compression Plate: Black anodized Aluminum. Thickness = 12 mm.
- 4 Compression Screw: Clear anodized Aluminum. Height = 27 mm, Fluted Knob
- 5 Elastomer Guide: Ultem 1000. Thickness: 0.425mm
- 6 Socket Base Screw: Socket Head Cap Screw, alloy steel with black oxide finish, 0-80 Thread, 3/8" long.
- 7 Backing Plate: Black anodized Aluminum
- 8 Elastomer: 20 micron dia gold plated brass filaments arranged symmetrically in a silicone rubber (63.5 degree angle). Thickness = 0.5mm.
- 9 Latch: Black anodized Aluminum.

| | | | | |
|---|---|------------------------|---------------|---------------|
|  | CG-QFN-7004 Drawing | Status: Released | Scale: 0.16:1 | Rev: A |
| | © 2010 IRONWOOD ELECTRONICS, INC. 11351 Rupp Drive, Suite 400, Burnsville, MN 55337 Tele: (952) 229-8200 www.ironwoodelectronics.com | Drawing: E Smolentseva | | Date: 8/24/10 |
| | | File: CG-QFN-7004 Dwg | Modified: | |

All Tolerances: ±0.125mm (unless stated otherwise). Materials and specifications are subject to change without notice.


Recommended PCB Layout
Top View



Keep out Area (A): Max. component height 2.05mm
Keep out Area (B): Max. Component height 13.65mm

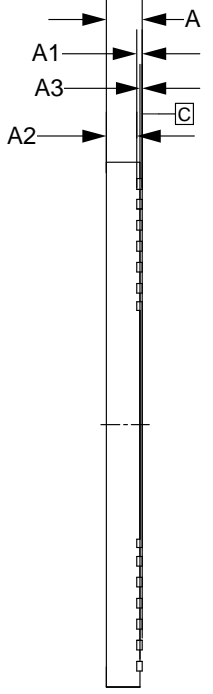
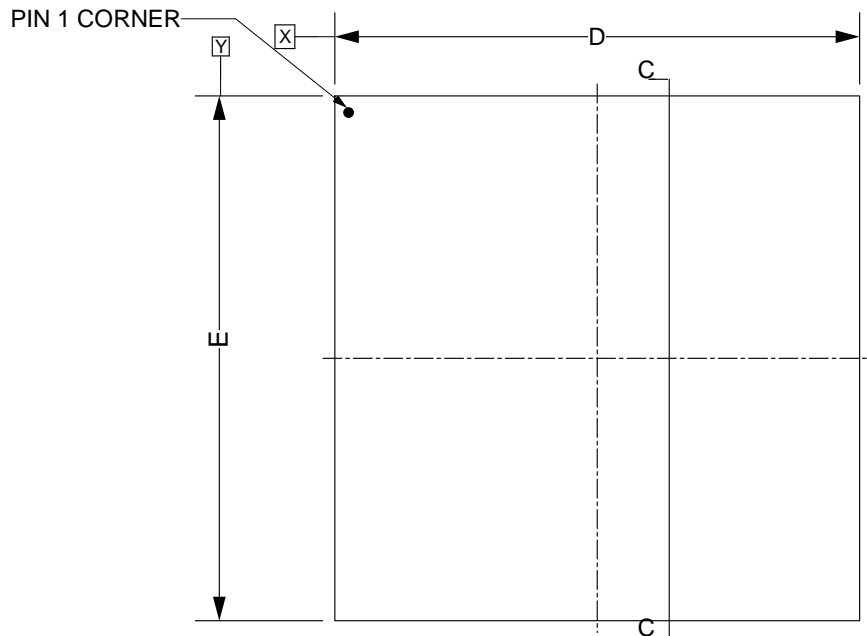
Target PCB Recommendations
Total thickness: 1.5mm min.
Plating: Gold or Solder finish

DXF DATA WILL BE PROVIDED

| | | | | |
|---|---|------------------------|---------------|---------------|
|  | CG-QFN-7004 Drawing | Status: Released | Scale: 0.16:1 | Rev: A |
| | © 2010 IRONWOOD ELECTRONICS, INC. 11351 Rupp Drive, Suite 400, Burnsville, MN 55337 Tele: (952) 229-8200 www.ironwoodelectronics.com | Drawing: E Smolentseva | | Date: 8/24/10 |
| | | File: CG-QFN-7004 Dwg | Modified: | |

Recommended PCB Layout Tolerances:
±0.025mm [±0.001"] unless stated otherwise.

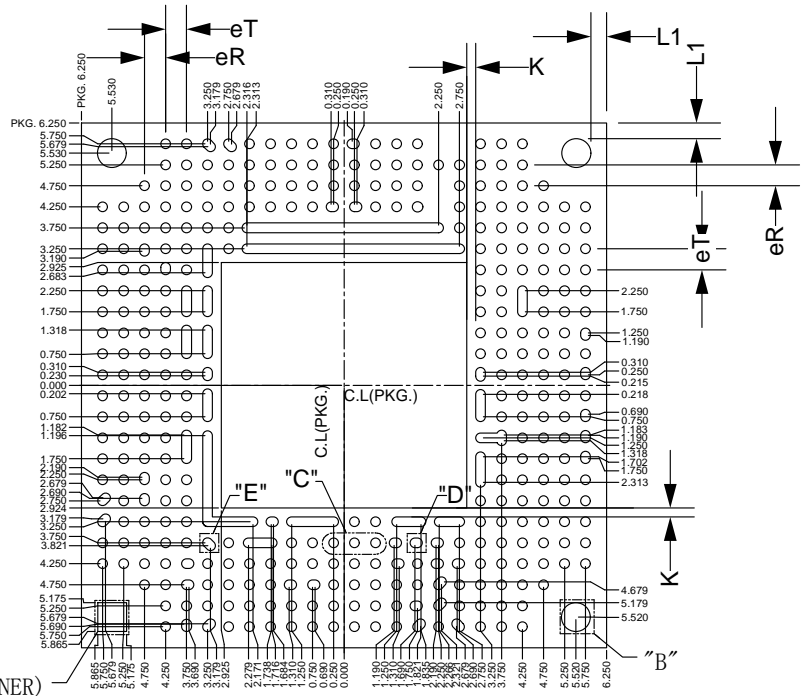
TOP VIEW



* CONTROLLING DIMENSION : MM

| SYMBOL | MILLIMETER | | | INCH | | |
|--------|------------|-------|-------|------------|-------|-------|
| | MIN. | NOM. | MAX. | MIN. | NOM. | MAX. |
| A | --- | --- | 0.85 | --- | --- | 0.033 |
| A3 | 0.020 | 0.050 | 0.080 | 0.001 | 0.002 | 0.003 |
| A2 | 0.640 | 0.675 | 0.710 | 0.025 | 0.027 | 0.028 |
| A1 | 0.120 | 0.130 | 0.140 | 0.005 | 0.005 | 0.006 |
| b | 0.640 | 0.690 | 0.740 | 0.025 | 0.027 | 0.029 |
| b1 | 0.180 | 0.230 | 0.280 | 0.007 | 0.009 | 0.011 |
| b2 | 0.240 | 0.290 | 0.340 | 0.009 | 0.011 | 0.013 |
| b3 | 0.280 | 0.330 | 0.380 | 0.011 | 0.013 | 0.015 |
| L | 0.640 | 0.690 | 0.740 | 0.025 | 0.027 | 0.029 |
| D | 12.50 BSC. | | | 0.492 BSC. | | |
| D2 | 5.799 | 5.849 | 5.899 | 0.228 | 0.230 | 0.232 |
| E | 12.50 BSC. | | | 0.492 BSC. | | |
| E2 | 5.799 | 5.849 | 5.899 | 0.228 | 0.230 | 0.232 |
| eT | 0.500 | | | 0.020 | | |
| eR | 0.500 | | | 0.020 | | |
| K | 0.160 | 0.210 | 0.260 | 0.006 | 0.008 | 0.010 |
| L1 | 0.335 | 0.385 | 0.435 | 0.013 | 0.015 | 0.017 |

BOTTOM VIEW



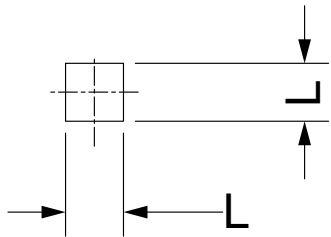
SECTION C-C

| TOLERANCES OF FORM AND POSITION | | |
|---------------------------------|-------|-------|
| aaa | 0.050 | 0.002 |
| bbb | 0.100 | 0.004 |
| ddd | 0.050 | 0.002 |
| ccc | 0.100 | 0.004 |
| eee | 0.080 | 0.003 |
| fff | 0.100 | 0.004 |

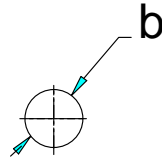
PACKAGE OUTLINE
338L aQFN
(PACKAGE SIZE : 12.50*12.50*0.85 mm)

| | | | | |
|--|---|------------------------|---------------|--------|
| | CG-QFN-7004 Drawing © 2010 IRONWOOD ELECTRONICS, INC. 11351 Rupp Drive, Suite 400, Burnsville, MN 55337 Tele: (952) 229-8200 www.ironwoodelectronics.com | Status: Released | Scale: 0.16:1 | Rev: A |
| | | Drawing: E Smolentseva | Date: 8/24/10 | |
| | | File: CG-QFN-7004 Dwg | Modified: | |

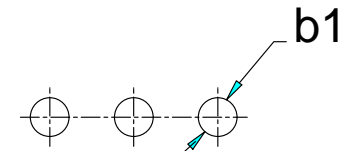
All units are in mm.
Tolerance is +/- 0.05



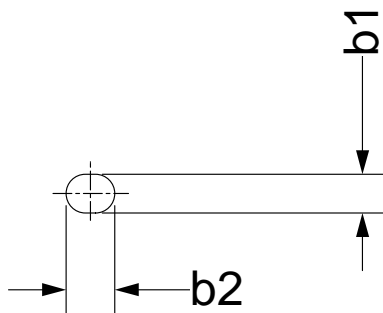
DETAIL "A" (1:1)(1X)



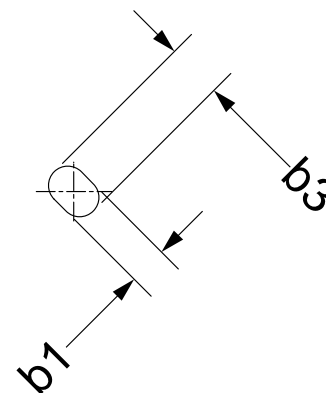
DETAIL "B" (1:1)(3X)




DETAIL "C" (2:1)(300X)



DETAIL "D" (2:1)(24X)

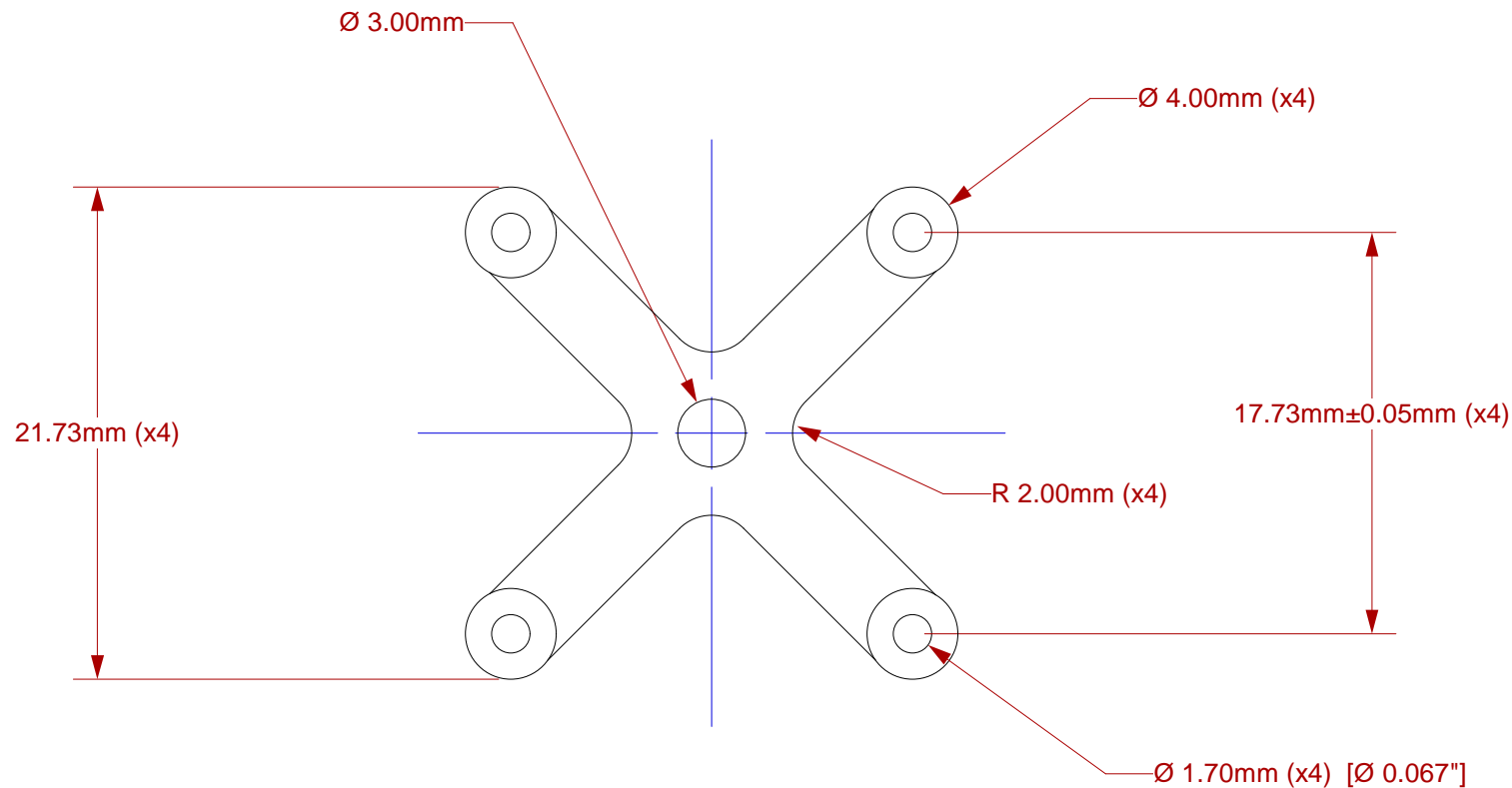


DETAIL "E" (2:1)(10X)

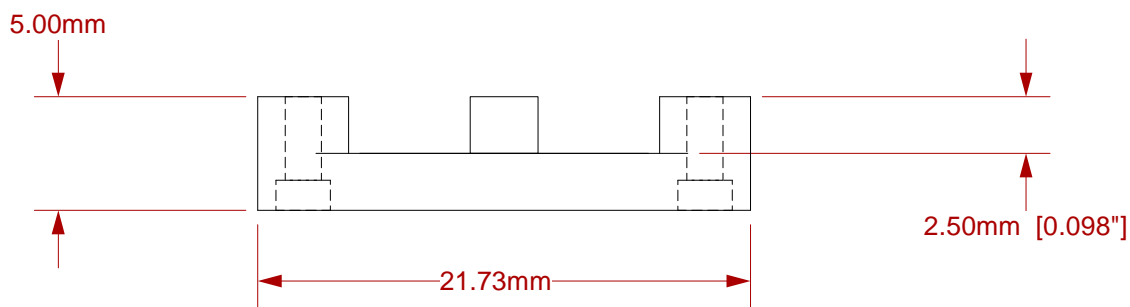
| | | | | |
|---|---|------------------------|---------------|---------------|
|  | CG-QFN-7004 Drawing | Status: Released | Scale: 0.16:1 | Rev: A |
| | © 2010 IRONWOOD ELECTRONICS, INC. 11351 Rupp Drive, Suite 400, Burnsville, MN 55337 Tele: (952) 229-8200 www.ironwoodelectronics.com | Drawing: E Smolentseva | | Date: 8/24/10 |
| | | File: CG-QFN-7004 Dwg | Modified: | |

All dimensions are in mm.
 All tolerances are +/- 0.125mm.
 (Unless stated otherwise)


Top View



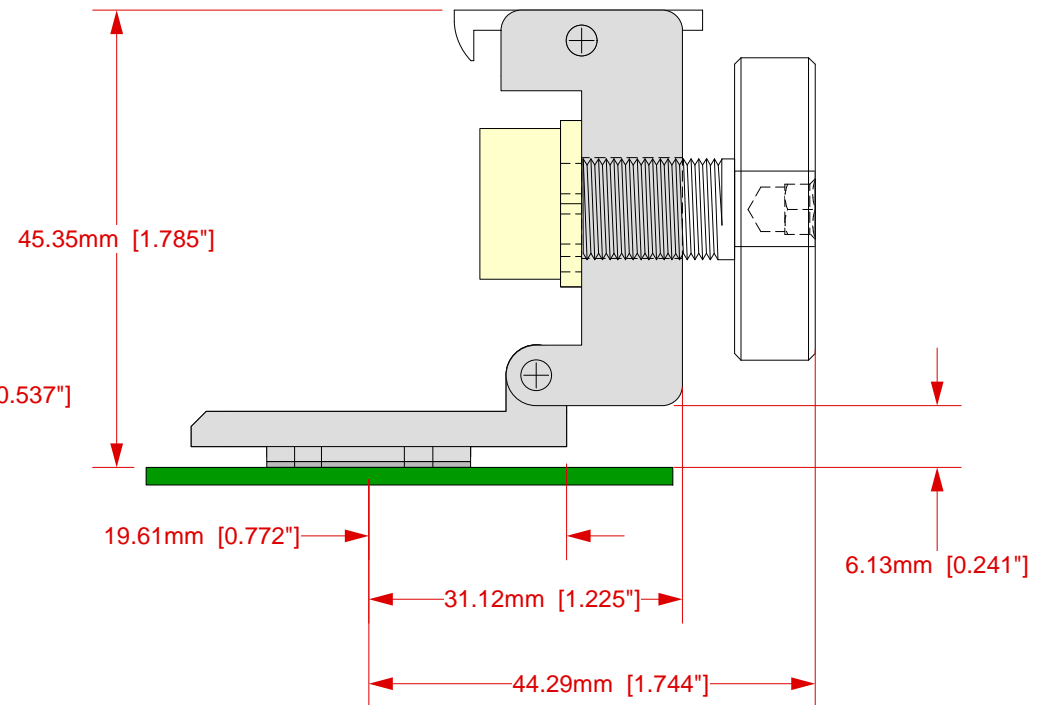
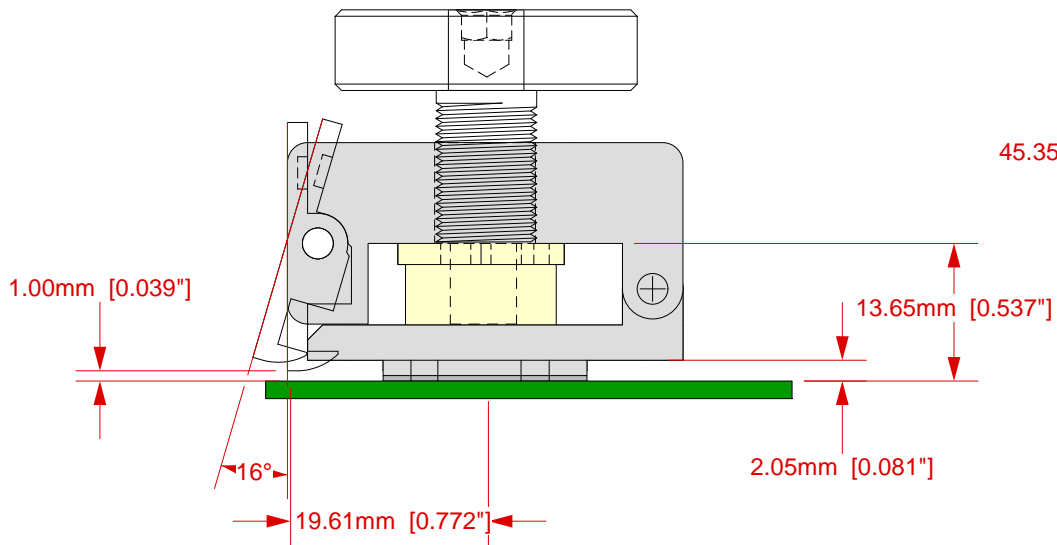
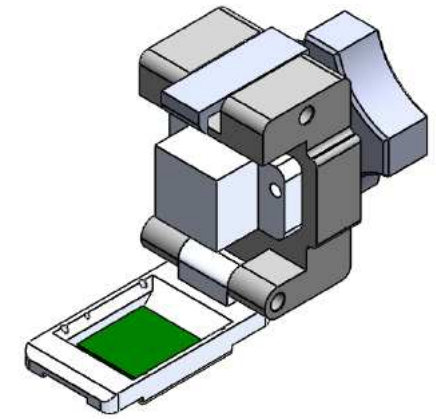
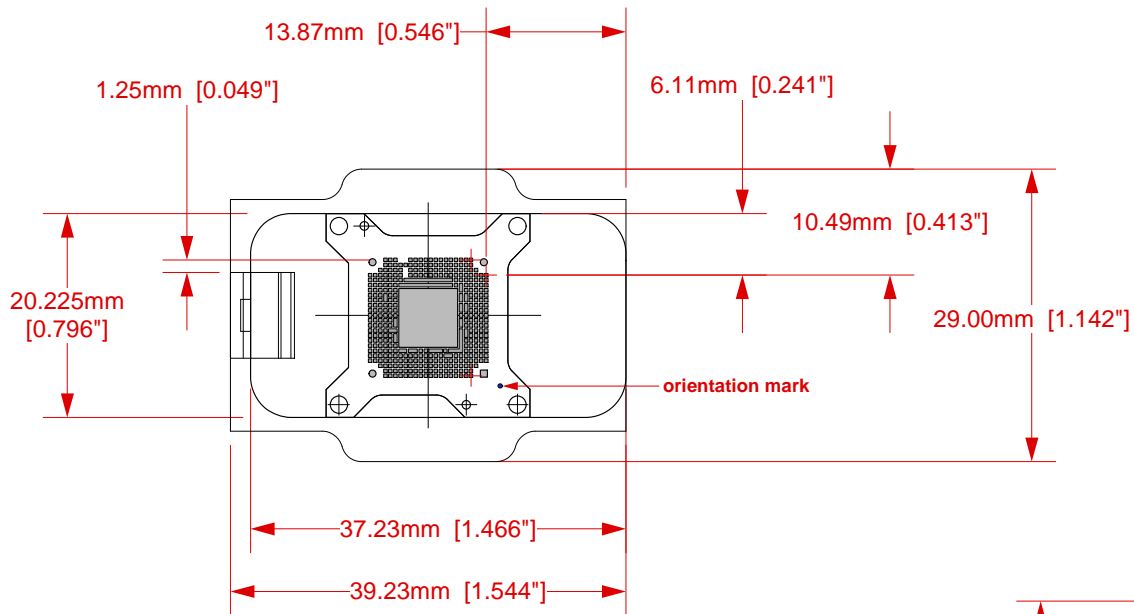
Side View




Description: Backing Plate

| | | | | |
|---|---|------------------------|---------------|---------------|
|  | CG-QFN-7004 Drawing | Status: Released | Scale: 0.16:1 | Rev: A |
| | © 2010 IRONWOOD ELECTRONICS, INC. 11351 Rupp Drive, Suite 400, Burnsville, MN 55337 Tele: (952) 229-8200 www.ironwoodelectronics.com | Drawing: E Smolentseva | | Date: 8/24/10 |
| | | File: CG-QFN-7004 Dwg | Modified: | |

All dimensions are in mm.
All tolerances are +/- 0.125mm.
(Unless stated otherwise)



Description: Keep out area information

| | | | | |
|---|---|------------------------|---------------|---------------|
|  | CG-QFN-7004 Drawing | Status: Released | Scale: 0.16:1 | Rev: A |
| | © 2010 IRONWOOD ELECTRONICS, INC. 11351 Rupp Drive, Suite 400, Burnsville, MN 55337 Tele: (952) 229-8200 www.ironwoodelectronics.com | Drawing: E Smolentseva | | Date: 8/24/10 |
| | | File: CG-QFN-7004 Dwg | Modified: | |

All dimensions are in mm.
 All tolerances are +/- 0.125mm.
 (Unless stated otherwise)