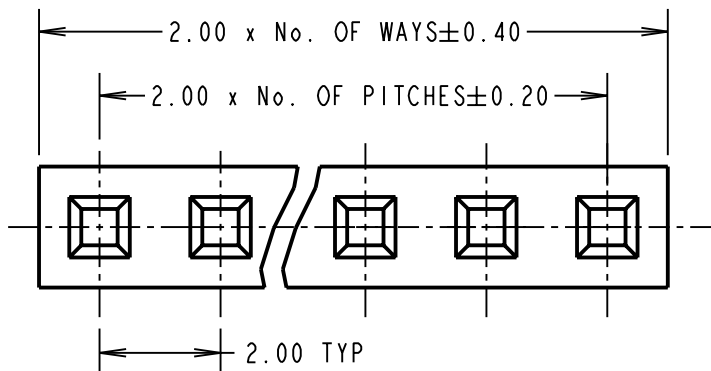


# Customer Information Sheet

DRAWING No.: M22-301XX00 SHEET 2 OF 2 IF IN DOUBT - ASK © NOT TO SCALE THIRD ANGLE PROJECTION ALL DIMENSIONS IN mm



**SPECIFICATION:**

**MATERIAL**

MOULDING = NYLON 66 UL94V-2, BLACK

**ELECTRICAL:**

CURRENT RATING = 2A AC, DC

VOLTAGE RATING = 250V AC MAX

CONTACT RESISTANCE (INITIAL) = 10 MILLIOHMS MAX

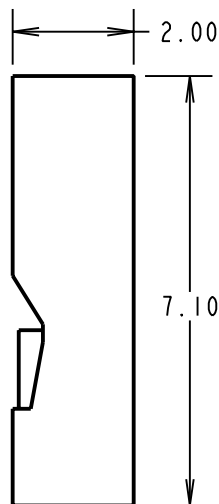
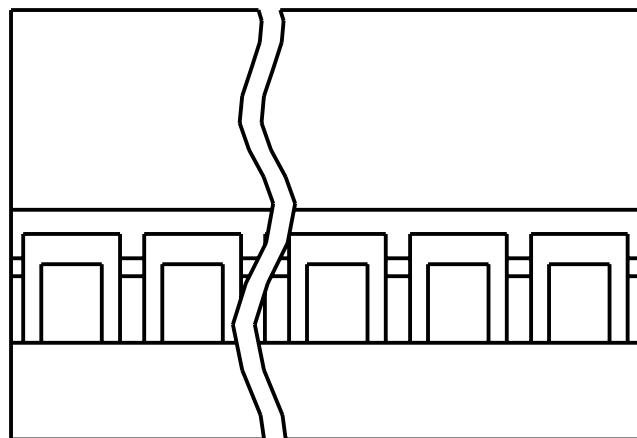
CONTACT RESISTANCE (AFTER CONDITIONING) = 20 MILLIOHMS MAX

DIELECTRIC WITHSTANDING VOLTAGE = 1500V AC FOR 1 MINUTE

INSULATION RESISTANCE = 5000 MEGOHMS MIN

**ENVIRONMENTAL:**

OPERATING TEMPERATURE = -40°C TO +105°C



**NOTES:**

1. TO BE USED WITH CRIMP CONTACTS M22-30400XX (REELED) OR M22-30500XX (LOOSE).
2. ALL TOLERANCES ARE ±0.10 UNLESS OTHERWISE STATED.

ORDER CODE:  
**M22-301XX00**  
No. OF WAYS:   
01 TO 40

RA	9	14.12.09	10606
NAME	ISS.	DATE	C/NOTE
APPROVED:		R. ADDE	
CHECKED:		M.G. PLESTED	
DRAWN:		I. SANDY	
CUSTOMER REF.:			
ASSEMBLY DRG:			

**HARWIN**

HARWIN USA TEL: 603 893 5376 FAX: 603 893 5396 mis@harwin.com	HARWIN Europe (UK) TEL: 023 9231 4545 FAX: 023 9231 4590 mis@harwin.co.uk	HARWIN Asia TEL: +65 6 779 4909 FAX: +65 6 779 3868 mis@harwin.com.sg
--	--	--

THIS DRAWING AND ANY INFORMATION OR DESCRIPTIVE MATTER SET OUT HEREON ARE CONFIDENTIAL AND COPYRIGHT PROPERTY OF THE HARWIN GROUP AND MUST NOT BE DISCLOSED, LOANED, COPIED OR USED FOR MANUFACTURING, TENDERING OR FOR ANY OTHER PURPOSE WITHOUT THEIR WRITTEN PERMISSION.

**TOLERANCES**  
X = ±1mm  
X.X = ±0.25mm  
X.XX = ±0.10mm  
X.XXX = ±0.01mm  
ANGLES = ±5°  
UNLESS STATED

**MATERIAL:**  
SEE ABOVE  
**FINISH:** SEE ABOVE  
**S/AREA:** mm<sup>2</sup>

**TITLE:**  
2.00mm SIL CRIMP SOCKET HOUSING  
**DRAWING NUMBER:**  
**M22-301XX00**  
SHT 2 OF 2