

PLEASE CHECK WWW.MOLEX.COM FOR LATEST PART INFORMATION

Part Number: [0015475204](#)
Status: **Active**
Overview: [cgrid_sl_products](#)
Description: 2.54mm (.100") Pitch SL™ FFC/FPC Connector - Single Row Male Version D, 20 Circuits

Documents:

[3D Model](#) [Product Specification PS-70430 \(PDF\)](#)
[Drawing \(PDF\)](#) [RoHS Certificate of Compliance \(PDF\)](#)

Agency Certification

CSA LR19980
 UL E29179

General

Product Family FFC/FPC Connectors
 Series [70431](#)
 Comments Male
 Overview [cgrid_sl_products](#)
 Product Name SL™

Physical

Circuits (Loaded) 20
 Contact Position N/A
 Durability (mating cycles max) 50
 Entry Angle Vertical
 Flammability 94V-0
 Number of Rows 1
 Orientation Vertical
 PCB Locator No
 PCB Retention None
 Packaging Type Tube
 Pitch - Mating Interface (in) 0.100 In
 Pitch - Mating Interface (mm) 2.54 mm
 Polarized to PCB No
 Stackable Yes
 Surface Mount Compatible (SMC) N/A
 Temperature Range - Operating -40°C to +105°C
 Termination Interface: Style IDT or Pierce
 Wire/Cable Type FFC/FPC

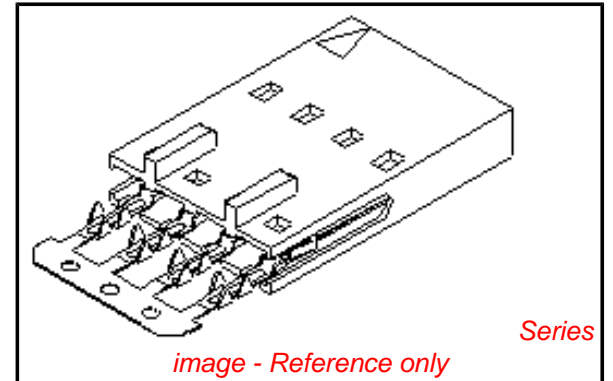
Electrical

Current - Maximum per Contact 2A
 Voltage - Maximum 250V

Material Info

Reference - Drawing Numbers

Product Specification PS-70430
 Sales Drawing SDA-70431-****



EU RoHS **China RoHS**

Compliance Status

Not Reviewed

REACH SVHC

Not Reviewed

Halogen-Free

Status

Not Reviewed

Need more information on product environmental compliance?

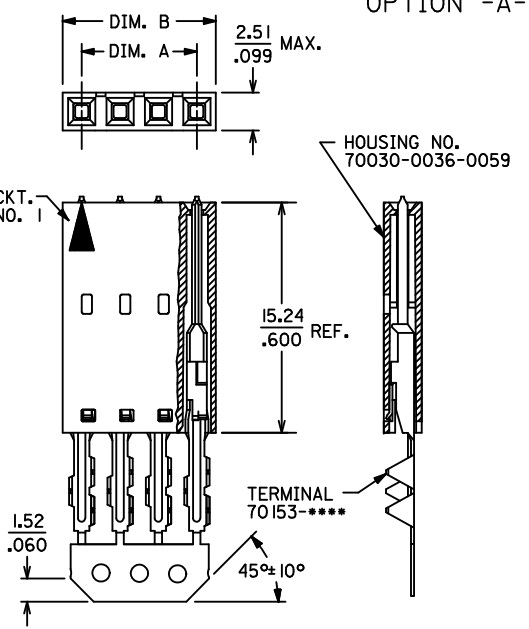
Email productcompliance@molex.com
 For a multiple part number RoHS Certificate of Compliance, [click here](#)

Please visit the [Contact Us](#) section for any non-product compliance questions.

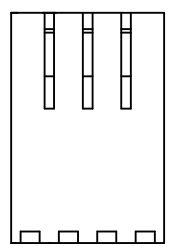
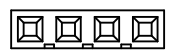
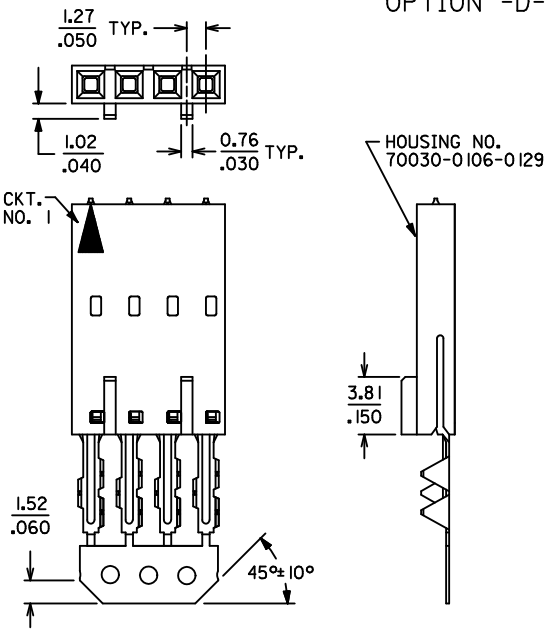
Search Parts in this Series

70431Series

OPTION -A-



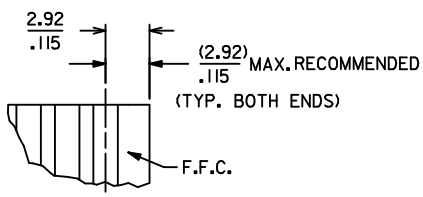
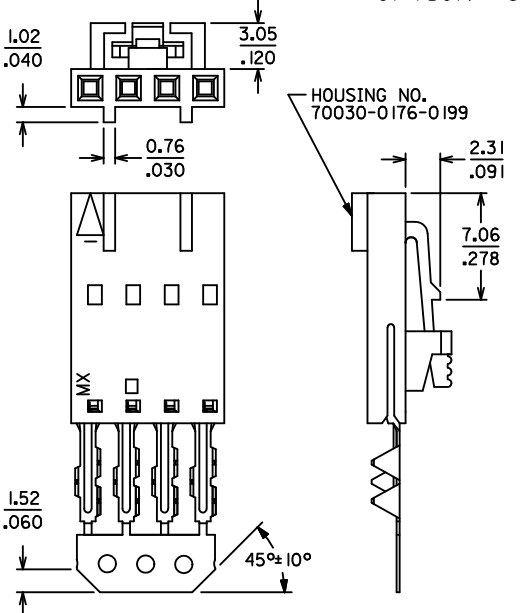
OPTION -D-



OPTIONAL CORE-OUT FOR HOUSING OPTIONS A & D
CKT. SIZES 2-25
(FOR CONTROL OF BOW)

| CKT. SIZE | DIM. "A" (MAX.) | DIM. "B" (MAX.) |
|-----------|------------------|------------------|
| 2 | (2.54) .100 | (5.05) .199 |
| 3 | (5.08) .200 | (7.59) .299 |
| 4 | (7.62) .300 | (10.13) .399 |
| 5 | (10.16) .400 | (12.67) .499 |
| 6 | (12.70) .500 | (15.21) .599 |
| 7 | (15.24) .600 | (17.75) .699 |
| 8 | (17.78) .700 | (20.29) .799 |
| 9 | (20.32) .800 | (22.83) .899 |
| 10 | (22.86) .900 | (25.37) .999 |
| 11 | (25.40) 1.000 | (27.91) 1.099 |
| 12 | (27.94) 1.100 | (30.45) 1.199 |
| 13 | (30.48) 1.200 | (32.99) 1.299 |
| 14 | (33.02) 1.300 | (35.53) 1.399 |
| 15 | (35.56) 1.400 | (38.07) 1.499 |
| 16 | (38.10) 1.500 | (40.61) 1.599 |
| 17 | (40.64) 1.600 | (43.15) 1.699 |
| 18 | (43.18) 1.700 | (45.69) 1.799 |
| 19 | (45.72) 1.800 | (48.23) 1.899 |
| 20 | (48.26) 1.900 | (50.77) 1.999 |
| 21 | (50.80) 2.000 | (53.31) 2.099 |
| 22 | (53.34) 2.100 | (55.85) 2.199 |
| 23 | (55.88) 2.200 | (58.39) 2.299 |
| 24 | (58.42) 2.300 | (60.93) 2.399 |
| 25 | (60.96) 2.400 | (63.47) 2.499 |

OPTION -G-



- NOTES:
 1. HOUSING: POLYESTER (PBT), UL94 V-0
 COLOR: BLACK
 TERMINAL: PHOSPHOR-BRONZE
 2. FINISHES:
 SEE PAGE 2 FOR PLATING FINISHES
 3. PRODUCT SPECIFICATION: PS-70430
 4. PACKAGING SPECIFICATION: PK-70873-0001
 5. SEE CHART FOR CIRCUIT SIZES
 6. TERMINALS ARE SHOWN PRE-LOADED INTO HOUSING AND LOCKED INTO FIRST ROW OF LOCKING TANG WINDOWS
 7. ALL DIMENSIONS ARE FOR REFERENCE ONLY
 8. SEE SHEET 2 FOR PART NUMBERS AND PLATINGS

| | | | | | | |
|---|--|--|--|--|---|--|
| MODIFY PRODUCT SPEC EC NO: UCP2010-0987 DRWNGS: BARRA 2009/12/28 CHKD: DMORGAN 2010/01/08 APPR: MILLER 2010/01/11 | QUALITY SYMBOLS ∇=0 ∇=0 ∇=0 | GENERAL TOLERANCES (UNLESS SPECIFIED) mm INCH 4 PLACES ± --- ± --- 3 PLACES ± --- ± --- 2 PLACES ± --- ± --- 1 PLACE ± --- ± --- ANGULAR ±1/2° | DIMENSION STYLE MM/IN DRAWN BY DATE MGB 12/21/88 CHECKED BY DATE MGB 12/21/88 APPROVED BY DATE WAZ 12/21/88 | SCALE 4:1 DESIGN UNITS INCH THIRD ANGLE PROJECTION | ASSY, SL CONNECTOR, FFC MALE, SINGLE ROW 2.54/.100 GRID MOLEX INCORPORATED SDA-70431-**** SHEET NO. 1 OF 2 | |
| | DRAFT WHERE APPLICABLE MUST REMAIN WITHIN DIMENSIONS | | MATERIAL NO. SEE TABLE | DOCUMENT NO. | THIS DRAWING CONTAINS INFORMATION THAT IS PROPRIETARY TO MOLEX INCORPORATED AND SHOULD NOT BE USED WITHOUT WRITTEN PERMISSION | |
| | | | | | | |
| | | | | | | |

| CKT. SIZE | TIN PLATE OPTION -A- | | TIN PLATE OPTION -D- | | 15 GOLD PLATE OPTION -A- | | 15 GOLD PLATE OPTION -D- | | 30 GOLD PLATE OPTION -A- | | 30 GOLD PLATE OPTION -D- | | TIN PLATE OPTION -G- | |
|-----------|----------------------|--------------|----------------------|--------------|--------------------------|--------------|--------------------------|--------------|--------------------------|--------------|--------------------------|--------------|----------------------|--------------|
| | EDP. NO. | ENG. NO. | EDP. NO. | ENG. NO. | EDP. NO. | ENG. NO. | EDP. NO. | ENG. NO. | EDP. NO. | ENG. NO. | EDP. NO. | ENG. NO. | EDP. NO. | ENG. NO. |
| 2 | 15-38-9020 | A-70431-0001 | 15-38-9022 | A-70431-0071 | 15-47-4028 | A-70431-0176 | 15-47-5020 | A-70431-0246 | 15-47-5022 | A-70431-0351 | 15-47-5024 | A-70431-0421 | | |
| 3 | -9030 | -0002 | -9032 | -0072 | -4038 | -0177 | -5030 | -0247 | -5032 | -0352 | -5034 | -0422 | | |
| 4 | -9040 | -0003 | -9042 | -0073 | -4048 | -0178 | -5040 | -0248 | -5042 | -0353 | -5044 | -0423 | | |
| 5 | -9050 | -0004 | -9052 | -0074 | -4058 | -0179 | -5050 | -0249 | -5052 | -0354 | -5054 | -0424 | | |
| 6 | -9060 | -0005 | -9062 | -0075 | -4068 | -0180 | -5060 | -0250 | -5062 | -0355 | -5064 | -0425 | | |
| 7 | -9070 | -0006 | -9072 | -0076 | -4078 | -0181 | -5070 | -0251 | -5072 | -0356 | -5074 | -0426 | | |
| 8 | -9080 | -0007 | -9082 | -0077 | -4088 | -0182 | -5080 | -0252 | -5082 | -0357 | -5084 | -0427 | | |
| 9 | -9090 | -0008 | -9092 | -0078 | -4098 | -0183 | -5090 | -0253 | -5092 | -0358 | -5094 | -0428 | | |
| 10 | -9100 | -0009 | -9102 | -0079 | -4108 | -0184 | -5100 | -0254 | -5102 | -0359 | -5104 | -0429 | 15-38-9103 | A-70431-0149 |
| 11 | -9110 | -0010 | -9112 | -0080 | -4118 | -0185 | -5110 | -0255 | -5112 | -0360 | -5114 | -0430 | | |
| 12 | -9120 | -0011 | -9122 | -0081 | -4128 | -0186 | -5120 | -0256 | -5122 | -0361 | -5124 | -0431 | | |
| 13 | -9130 | -0012 | -9132 | -0082 | -4138 | -0187 | -5130 | -0257 | -5132 | -0362 | -5134 | -0432 | | |
| 14 | -9140 | -0013 | -9142 | -0083 | -4148 | -0188 | -5140 | -0258 | -5142 | -0363 | -5144 | -0433 | | |
| 15 | -9150 | -0014 | -9152 | -0084 | -4158 | -0189 | -5150 | -0259 | -5152 | -0364 | -5154 | -0434 | | |
| 16 | -9160 | -0015 | -9162 | -0085 | -4168 | -0190 | -5160 | -0260 | -5162 | -0365 | -5164 | -0435 | | |
| 17 | -9170 | -0016 | -9172 | -0086 | -4178 | -0191 | -5170 | -0261 | -5172 | -0366 | -5174 | -0436 | | |
| 18 | -9180 | -0017 | -9182 | -0087 | -4188 | -0192 | -5180 | -0262 | -5182 | -0367 | -5184 | -0437 | | |
| 19 | -9190 | -0018 | -9192 | -0088 | -4198 | -0193 | -5190 | -0263 | -5192 | -0368 | -5194 | -0438 | | |
| 20 | -9200 | -0019 | -9202 | -0089 | -4208 | -0194 | -5200 | -0264 | -5202 | -0369 | -5204 | -0439 | | |
| 21 | -9210 | -0020 | -9212 | -0090 | -4218 | -0195 | -5210 | -0265 | -5212 | -0370 | -5214 | -0440 | | |
| 22 | -9220 | -0021 | -9222 | -0091 | -4228 | -0196 | -5220 | -0266 | -5222 | -0371 | -5224 | -0441 | | |
| 23 | -9230 | -0022 | -9232 | -0092 | -4238 | -0197 | -5230 | -0267 | -5232 | -0372 | -5234 | -0442 | | |
| 24 | -9240 | -0023 | -9242 | -0093 | -4248 | -0198 | -5240 | -0268 | -5242 | -0373 | -5244 | -0443 | | |
| 25 | 15-38-9250 | A-70431-0024 | 15-38-9252 | A-70431-0094 | 15-47-4258 | A-70431-0199 | 15-47-5250 | A-70431-0269 | 15-47-5252 | A-70431-0374 | 15-47-5254 | A-70431-0444 | | |

| PLATING PER ES-88: | CARRIER STRIP COLOR CODE |
|--------------------|--------------------------|
| TIN | NONE |
| 15 GOLD | YELLOW |
| 30 GOLD | RED |

PLATING CHART PER ES-88-***

TIN: TIN OVERALL
THICKNESS: 3.81 MICROMETERS (150 MICROINCHES) MINIMUM ALL OVER A NICKEL UNDERPLATE.

15 GOLD: SELECTIVE GOLD (Au) WITH SELECTIVE TIN
THICKNESS: 0.38 MICROMETERS (15 MICROINCHES) MINIMUM GOLD (Au) IN SELECT AREA
1.90 MICROMETERS (75 MICROINCHES) MINIMUM TIN IN SELECT AREA ALL OVER A NICKEL UNDERPLATE.

30 GOLD: SELECTIVE GOLD (Au) WITH SELECTIVE TIN
THICKNESS: 0.76 MICROMETERS (30 MICROINCHES) MINIMUM GOLD (Au) IN SELECT AREA
1.90 MICROMETERS (75 MICROINCHES) MINIMUM TIN IN SELECT AREA ALL OVER A NICKEL UNDERPLATE.

| | | | | | | | | | |
|---|--------------------------------------|---------------------------------------|-------|--------------------------|------------------|---|--|------------------------|--|
| SEE SHEET 1 EC NO: UCP2010-0987 DRAWN BY: DRWINMS BARRA 2009/12/28 CHKD BY: CHKD:DMORGAN 2010/01/08 APPR: MILLER 2010/01/11 | QUALITY SYMBOLS ▽=0 ▽=0 ▽=0 | GENERAL TOLERANCES (UNLESS SPECIFIED) | | DIMENSION STYLE MM/IN | | SCALE 1:1 | DESIGN UNITS INCH | THIRD ANGLE PROJECTION | |
| | | 4 PLACES ± --- | ± --- | DRAWN BY MGB | DATE 12/21/88 | TITLE ASSY, SL CONNECTOR, FFC MALE, SINGLE ROW 2.54/.100 GRID | | | |
| | | 3 PLACES ± --- | ± --- | CHECKED BY MGB | DATE 12/21/88 | | | | |
| | | 2 PLACES ± --- | ± --- | APPROVED BY WAZ | | DATE 12/21/88 | MATERIAL NO. DOCUMENT NO. SDA-70431-**** | | |
| 1 PLACE ± --- | ± --- | ANGULAR ±1/2° | | | | | | | |
| DRAFT WHERE APPLICABLE MUST REMAIN WITHIN DIMENSIONS | | SEE TABLE | | SHEET NO. 2 OF 2 | | THIS DRAWING CONTAINS INFORMATION THAT IS PROPRIETARY TO MOLEX INCORPORATED AND SHOULD NOT BE USED WITHOUT WRITTEN PERMISSION | | | |