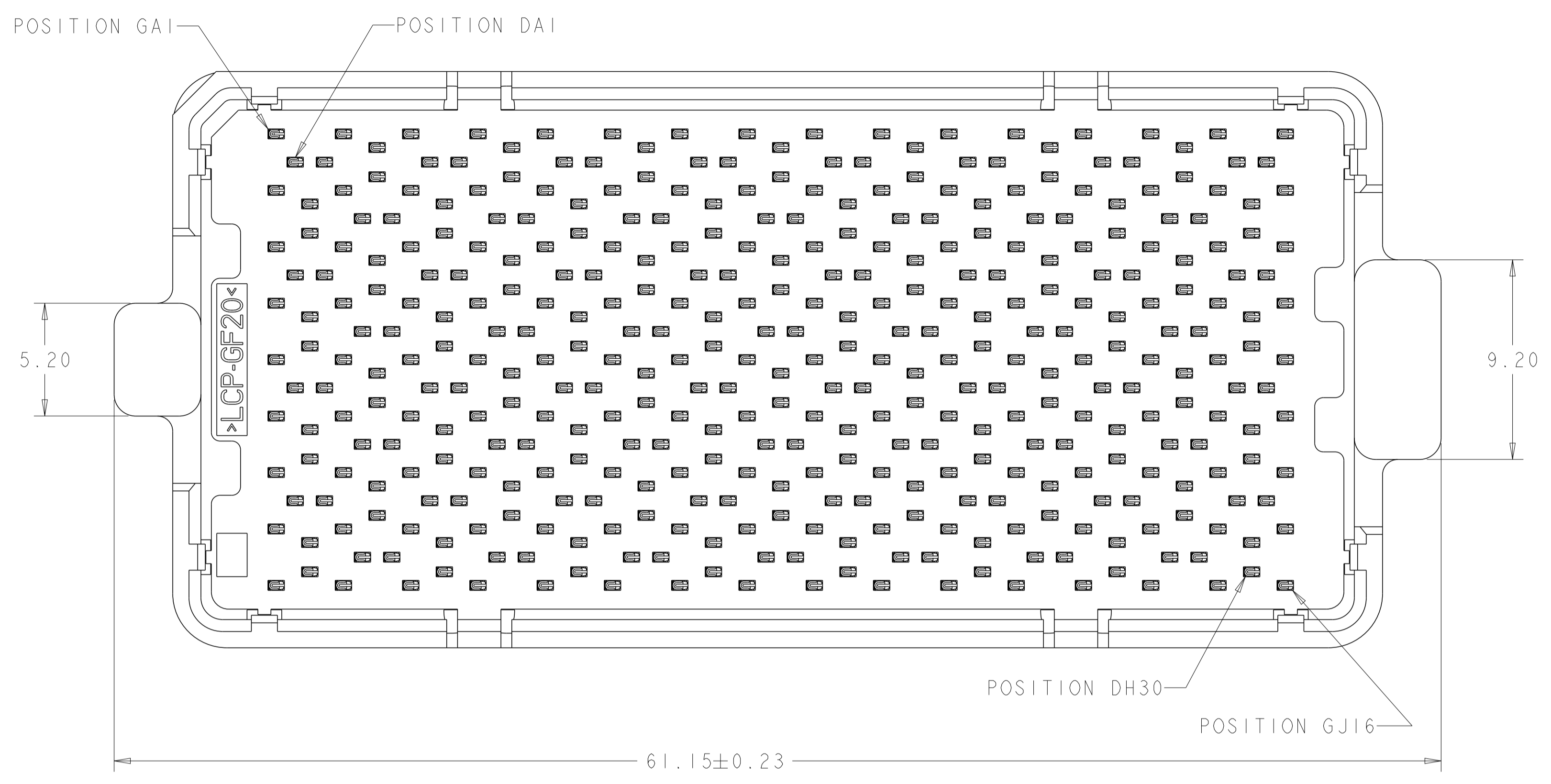
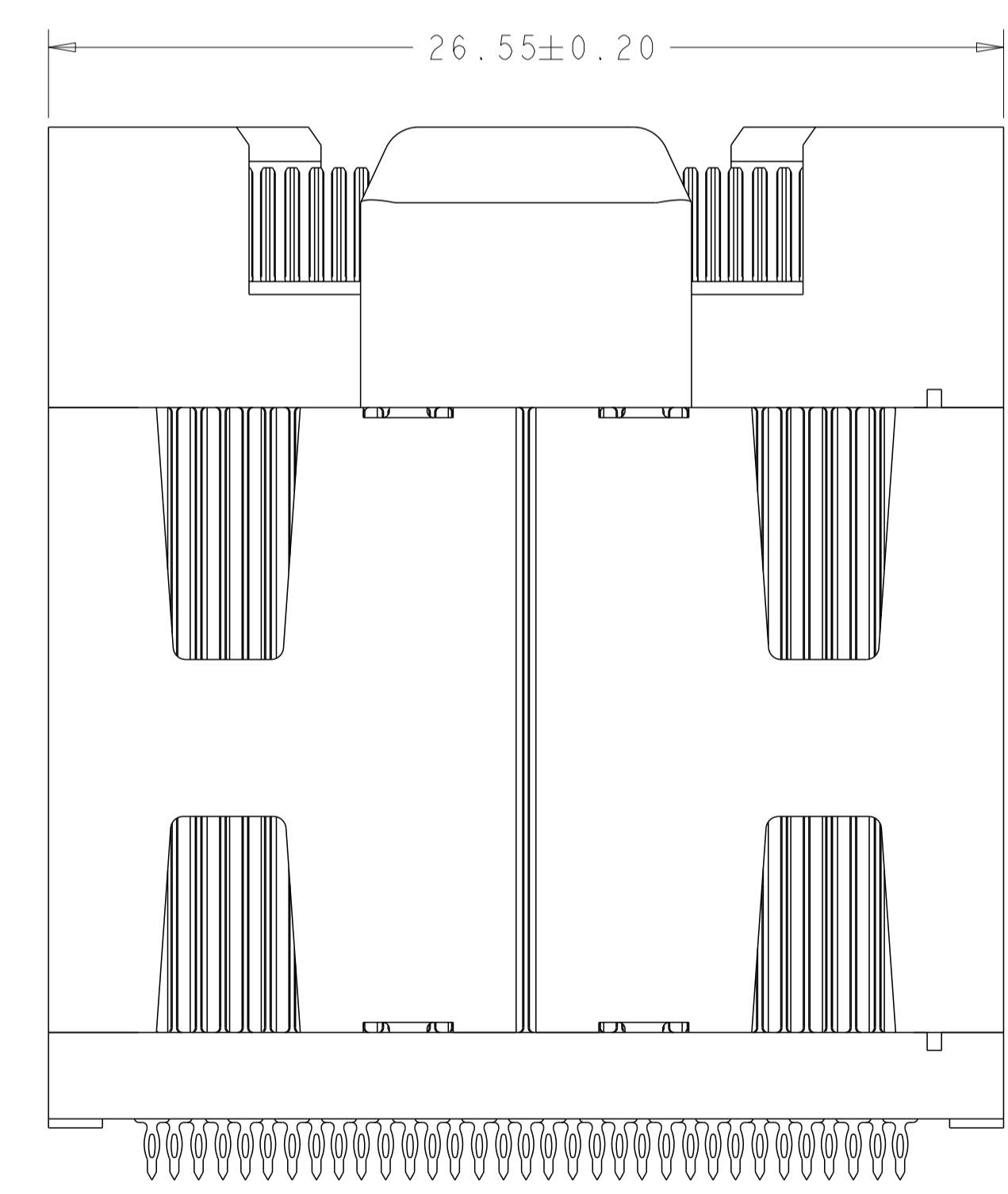
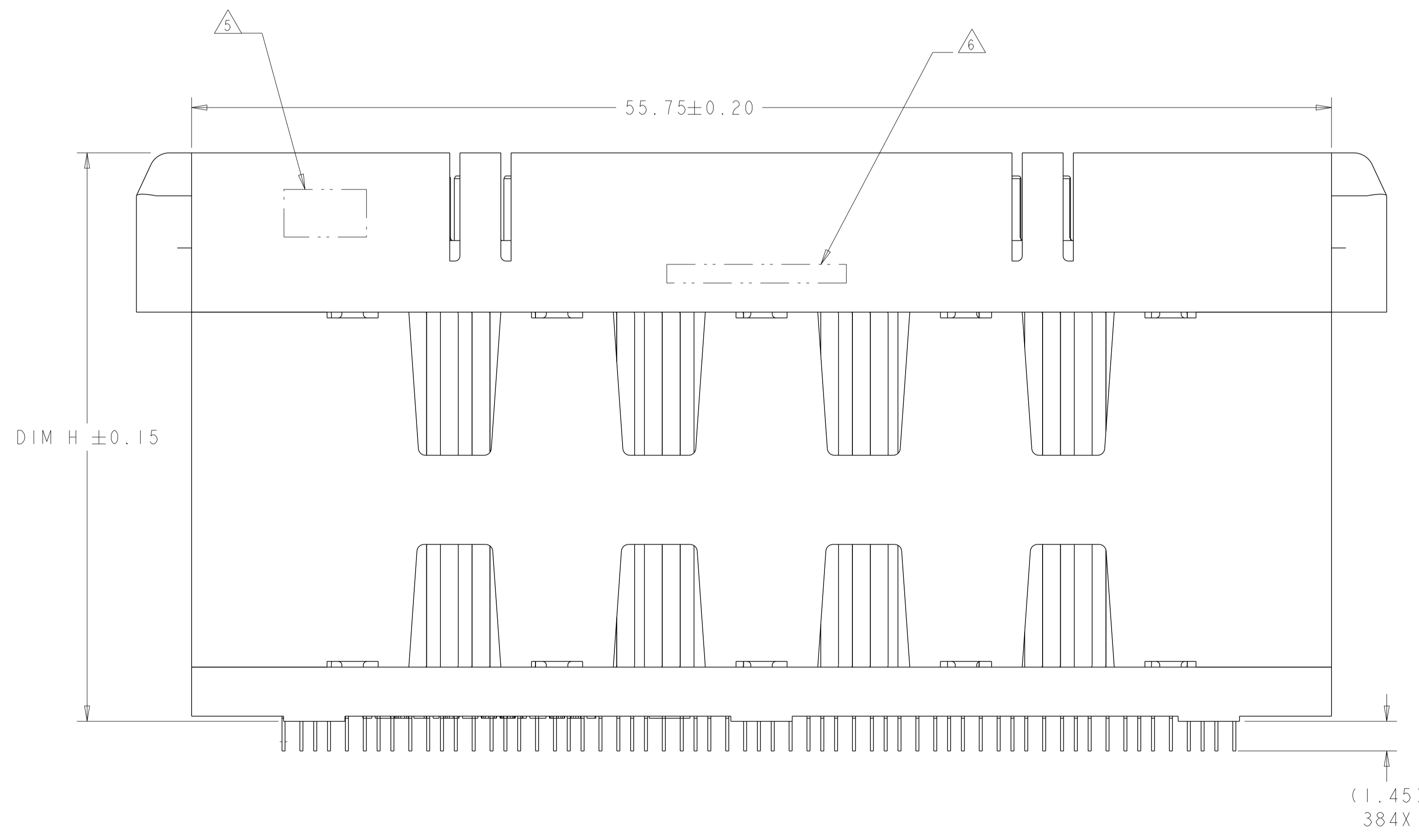


| LOC |     | DIST                      |           | REVISIONS |      |  |  |
|-----|-----|---------------------------|-----------|-----------|------|--|--|
| P   | LTN | DESCRIPTION               | DATE      | DWN       | APVD |  |  |
| A   |     | REVISED PER ECO-12-018201 | 11OCT2012 | KH        | MH   |  |  |



- 1 MATERIAL:  
 BASE HOUSING, UPPER HOUSING, ORGANIZER,  
 AND SPACER: THERMOPLASTIC, FLAMMABILITY  
 RATING UL94-V0  
 CONTACT: COPPER ALLOY
- 2. CONFORMS TO THE REQUIREMENTS OF TE PRODUCT  
 SPECIFICATION, 108-2375; BASED ON TELCORDIA  
 GR-1217-CORE FOR SYSTEM QUALITY LEVEL III,  
 APPLICATIONS IN CONTROLLED ENVIRONMENTS  
 (CENTRAL OFFICE).  
 SEE TE PRODUCT SPECIFICATION 108-2375 FOR  
 TEST SEQUENCES.
- 3 ROWS GA THRU GJ (SHOWN DARKENED) ARE TYPICALLY  
 USED AS GROUNDS.
- 4 SPECIFIED POSITIONAL TOLERANCE DEFINES HOLE TO  
 HOLE LOCATION WITHIN HOLE PATTERN. POSITIONAL  
 TOLERANCE OF HOLE PATTERN TO FIDUCIAL MARKS  
 OR PCB DATUMS SHALL BE DEFINED BY CUSTOMER.
- 5 AREA RESERVED FOR TE CONNECTIVITY LOGO.
- 6 AREA RESERVED FOR PART NUMBER (X-XXXXXX-X)  
 AND DATE CODE (YYWW).
- 7 USE CENTERLINES INDICATED ON PCB HOLE PATTERN  
 TO ESTABLISH ALIGNMENT BETWEEN HEADER AND  
 RECEPTACLE BOARDS.
- 8 PLATED THROUGH HOLE REQUIREMENTS:  
 HOLE SIZE PRIOR TO PLATING =  $\varnothing 0.420 \pm 0.013$   
 COPPER PLATING THICKNESS =  $0.038 \pm 0.013$   
 CALCULATED FINISHED HOLE SIZE =  $\varnothing 0.344 \pm 0.039$   
 THESE DIMENSIONS APPLY TO THE TOP 1.25mm OF  
 THE PCB THICKNESS FROM THE CONNECTOR MOUNTING  
 SIDE.
- 9 CONTACT SALES FOR AVAILABILITY OF THIS STACK  
 HEIGHT.

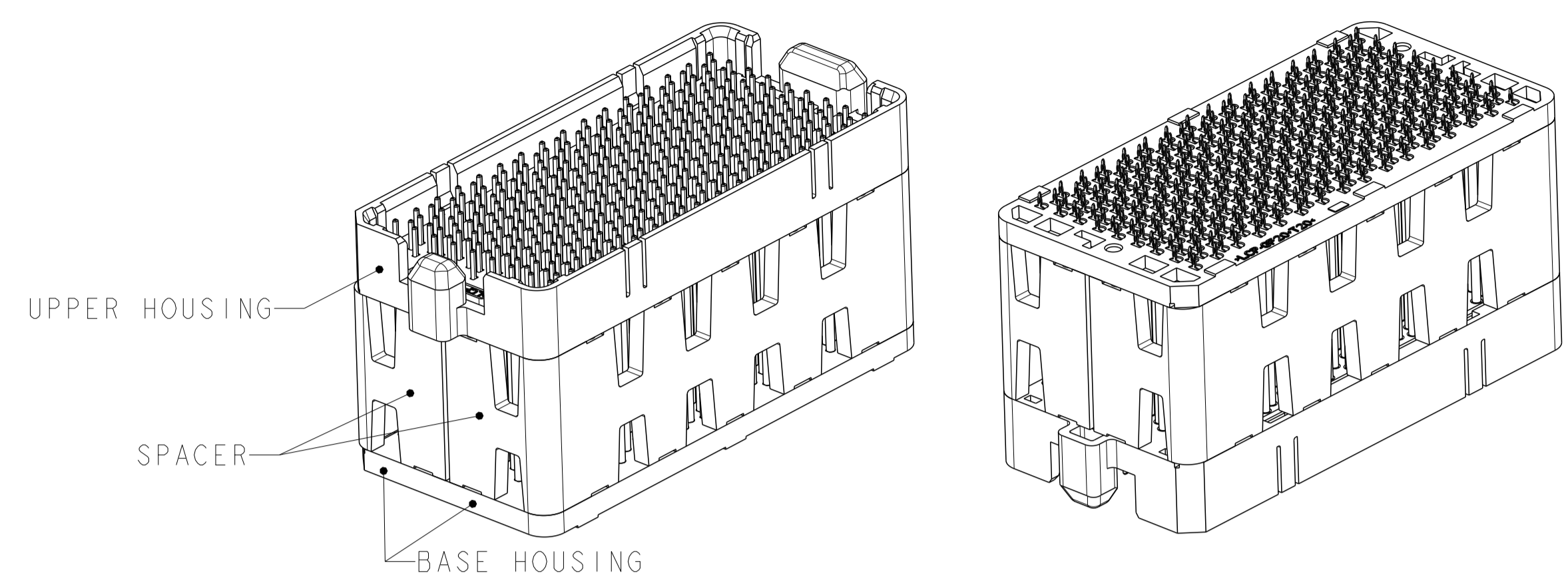


**SIZE 3 HOUSING W/ GUIDE POSTS \***  
**120 DIFFERENTIAL PAIRS**  
**384 TOTAL SIGNAL CONTACTS**

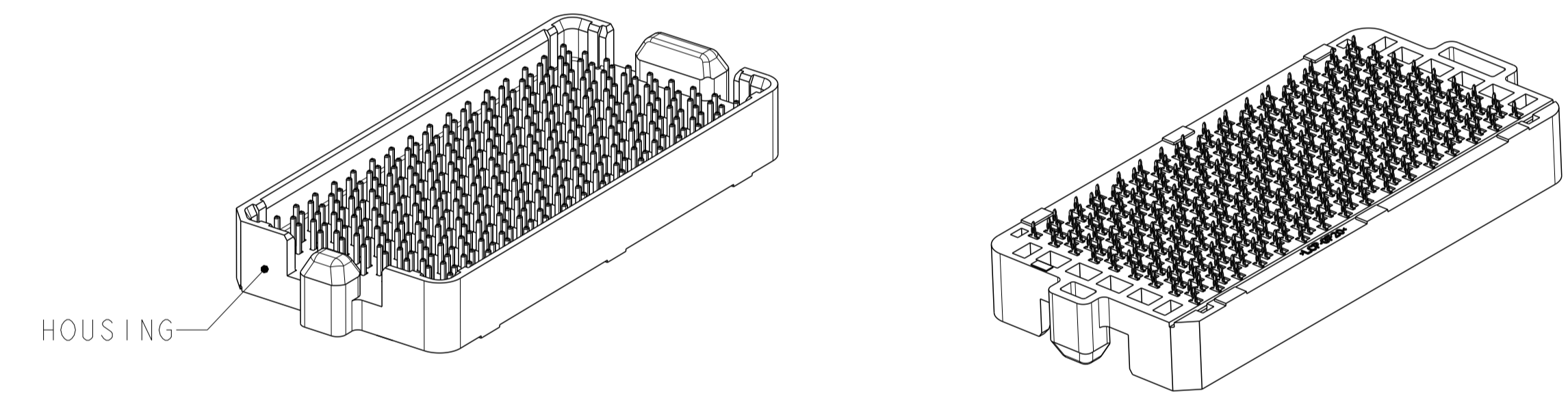
\* SIZE 1 AND SIZE 2 ARE ALSO AVAILABLE

|  |  |                             |                                 |  |
|--|--|-----------------------------|---------------------------------|--|
| THIS DRAWING IS A CONTROLLED DOCUMENT. |  | DWN<br>D. RINGLER 20JAN2010 | TE Connectivity                 |  |
| DIMENSIONS:                            |  | CHK<br>D. TROUT 20JAN2010   |                                 |  |
| TOLERANCES UNLESS OTHERWISE SPECIFIED: |  | APVD<br>J. FEEDER 20JAN2010 | NAME<br>HEADER ASSEMBLY         |  |
| mm                                     |  | PRODUCT SPEC                | 120/384                         |  |
| 0 PLC ±                                |  | APPLICATION SPEC            | STRADA MESA MEZZANINE CONNECTOR |  |
| 2 PLC ±0.13                            |  | SIZE CAGE CODE DRAWING NO   | RESTRICTED TO                   |  |
| 3 PLC ±0.013                           |  | 114-13249                   | A100779C=2132790                |  |
| 4 PLC ±                                |  | WEIGHT                      | SCALE 6:1 SHEET 1 OF 4 REV A    |  |
| ANGLES ±                               |  | CUSTOMER DRAWING            |                                 |  |
| FINISH                                 |  |                             |                                 |  |

| LOC | DIST | REVISIONS |     |             |      |     |      |
|-----|------|-----------|-----|-------------|------|-----|------|
| GP  | 00   | P         | LYN | DESCRIPTION | DATE | OWN | APVD |
|     |      | -         |     | SEE SHEET 1 |      |     |      |



ISOMETRIC VIEW  
 TYPICAL CONFIGURATION FOR 14mm THRU 42mm  
 28mm SHOWN  
 SCALE 2:1



ISOMETRIC VIEWS  
 TYPICAL CONFIGURATION FOR 8mm THRU 13mm  
 8mm SHOWN  
 SCALE 2:1

| △      | 41.8  | 42mm         | MATTE Sn             | 9-2132790-2 |
|--------|-------|--------------|----------------------|-------------|
| △      | 40.8  | 41mm         | MATTE Sn             | 9-2132790-1 |
| YES    | 39.8  | 40mm         | MATTE Sn             | 9-2132790-0 |
| △      | 38.8  | 39mm         | MATTE Sn             | 8-2132790-9 |
| △      | 37.8  | 38mm         | MATTE Sn             | 8-2132790-8 |
| △      | 36.8  | 37mm         | MATTE Sn             | 8-2132790-7 |
| △      | 35.8  | 36mm         | MATTE Sn             | 8-2132790-6 |
| △      | 34.8  | 35mm         | MATTE Sn             | 8-2132790-5 |
| △      | 33.8  | 34mm         | MATTE Sn             | 8-2132790-4 |
| △      | 32.8  | 33mm         | MATTE Sn             | 8-2132790-3 |
| △      | 31.8  | 32mm         | MATTE Sn             | 8-2132790-2 |
| △      | 30.8  | 31mm         | MATTE Sn             | 8-2132790-1 |
| △      | 29.8  | 30mm         | MATTE Sn             | 8-2132790-0 |
| △      | 28.8  | 29mm         | MATTE Sn             | 7-2132790-9 |
| YES    | 27.8  | 28mm         | MATTE Sn             | 7-2132790-8 |
| △      | 26.8  | 27mm         | MATTE Sn             | 7-2132790-7 |
| △      | 25.8  | 26mm         | MATTE Sn             | 7-2132790-6 |
| △      | 24.8  | 25mm         | MATTE Sn             | 7-2132790-5 |
| △      | 23.8  | 24mm         | MATTE Sn             | 7-2132790-4 |
| YES    | 22.8  | 23mm         | MATTE Sn             | 7-2132790-3 |
| △      | 21.8  | 22mm         | MATTE Sn             | 7-2132790-2 |
| △      | 20.8  | 21mm         | MATTE Sn             | 7-2132790-1 |
| △      | 19.8  | 20mm         | MATTE Sn             | 7-2132790-0 |
| △      | 18.8  | 19mm         | MATTE Sn             | 6-2132790-9 |
| △      | 17.8  | 18mm         | MATTE Sn             | 6-2132790-8 |
| △      | 16.8  | 17mm         | MATTE Sn             | 6-2132790-7 |
| △      | 15.8  | 16mm         | MATTE Sn             | 6-2132790-6 |
| △      | 14.8  | 15mm         | MATTE Sn             | 6-2132790-5 |
| △      | 13.8  | 14mm         | MATTE Sn             | 6-2132790-4 |
| △      | 12.8  | 13mm         | MATTE Sn             | 6-2132790-3 |
| △      | 11.8  | 12mm         | MATTE Sn             | 6-2132790-2 |
| △      | 10.8  | 11mm         | MATTE Sn             | 6-2132790-1 |
| YES    | 9.8   | 10mm         | MATTE Sn             | 6-2132790-0 |
| △      | 8.8   | 9mm          | MATTE Sn             | 5-2132790-9 |
| △      | 7.8   | 8mm          | MATTE Sn             | 5-2132790-8 |
| TOOLED | DIM H | STACK HEIGHT | CONTACT TAIL PLATING | PART NUMBER |

| △      | 41.8  | 42mm         | Sn/Pb                | 4-2132790-2 |
|--------|-------|--------------|----------------------|-------------|
| △      | 40.8  | 41mm         | Sn/Pb                | 4-2132790-1 |
| YES    | 39.8  | 40mm         | Sn/Pb                | 4-2132790-0 |
| △      | 38.8  | 39mm         | Sn/Pb                | 3-2132790-9 |
| △      | 37.8  | 38mm         | Sn/Pb                | 3-2132790-8 |
| △      | 36.8  | 37mm         | Sn/Pb                | 3-2132790-7 |
| △      | 35.8  | 36mm         | Sn/Pb                | 3-2132790-6 |
| △      | 34.8  | 35mm         | Sn/Pb                | 3-2132790-5 |
| △      | 33.8  | 34mm         | Sn/Pb                | 3-2132790-4 |
| △      | 32.8  | 33mm         | Sn/Pb                | 3-2132790-3 |
| △      | 31.8  | 32mm         | Sn/Pb                | 3-2132790-2 |
| △      | 30.8  | 31mm         | Sn/Pb                | 3-2132790-1 |
| △      | 29.8  | 30mm         | Sn/Pb                | 3-2132790-0 |
| △      | 28.8  | 29mm         | Sn/Pb                | 2-2132790-9 |
| YES    | 27.8  | 28mm         | Sn/Pb                | 2-2132790-8 |
| △      | 26.8  | 27mm         | Sn/Pb                | 2-2132790-7 |
| △      | 25.8  | 26mm         | Sn/Pb                | 2-2132790-6 |
| △      | 24.8  | 25mm         | Sn/Pb                | 2-2132790-5 |
| △      | 23.8  | 24mm         | Sn/Pb                | 2-2132790-4 |
| YES    | 22.8  | 23mm         | Sn/Pb                | 2-2132790-3 |
| △      | 21.8  | 22mm         | Sn/Pb                | 2-2132790-2 |
| △      | 20.8  | 21mm         | Sn/Pb                | 2-2132790-1 |
| △      | 19.8  | 20mm         | Sn/Pb                | 2-2132790-0 |
| △      | 18.8  | 19mm         | Sn/Pb                | 1-2132790-9 |
| △      | 17.8  | 18mm         | Sn/Pb                | 1-2132790-8 |
| △      | 16.8  | 17mm         | Sn/Pb                | 1-2132790-7 |
| △      | 15.8  | 16mm         | Sn/Pb                | 1-2132790-6 |
| △      | 14.8  | 15mm         | Sn/Pb                | 1-2132790-5 |
| △      | 13.8  | 14mm         | Sn/Pb                | 1-2132790-4 |
| △      | 12.8  | 13mm         | Sn/Pb                | 1-2132790-3 |
| △      | 11.8  | 12mm         | Sn/Pb                | 1-2132790-2 |
| △      | 10.8  | 11mm         | Sn/Pb                | 1-2132790-1 |
| YES    | 9.8   | 10mm         | Sn/Pb                | 1-2132790-0 |
| △      | 8.8   | 9mm          | Sn/Pb                | 2132790-9   |
| △      | 7.8   | 8mm          | Sn/Pb                | 2132790-8   |
| TOOLED | DIM H | STACK HEIGHT | CONTACT TAIL PLATING | PART NUMBER |

THIS DRAWING IS A CONTROLLED DOCUMENT. DWG: D. RINGLER 20JAN2010  
 CHK: D. TROUT 20JAN2010  
 APVD: J. FEEDER 20JAN2010

**STE** TE Connectivity

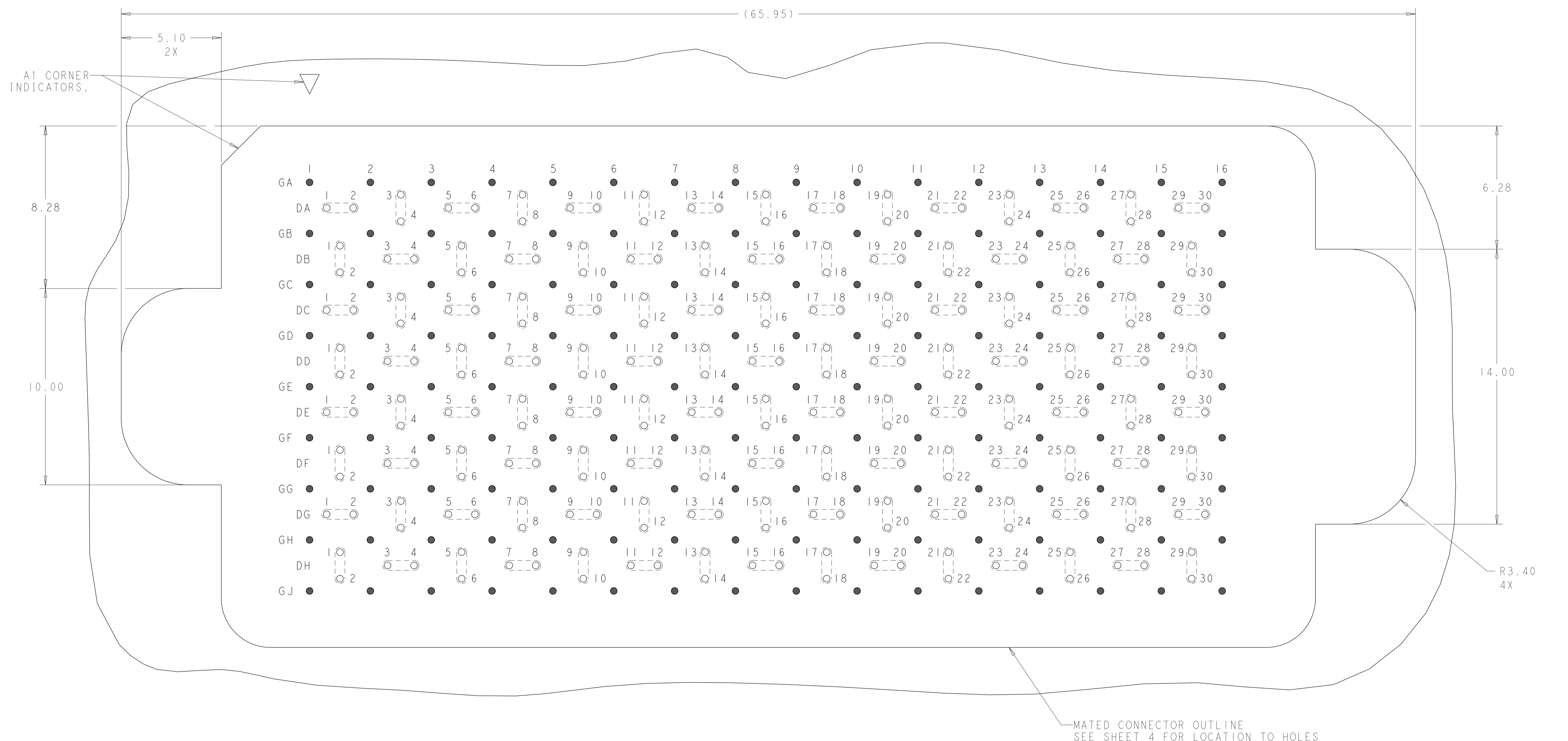
NAME: HEADER ASSEMBLY  
 120/384  
 STRADA MESA MEZZANINE CONNECTOR

PRODUCT SPEC: 108-2375  
 APPLICATION SPEC: 114-13249

SIZE: A1 CAGE CODE: 2132790 DRAWING NO: 100779  
 WEIGHT: -

CUSTOMER DRAWING SCALE: 6:1 SHEET 2 OF 4 REV A

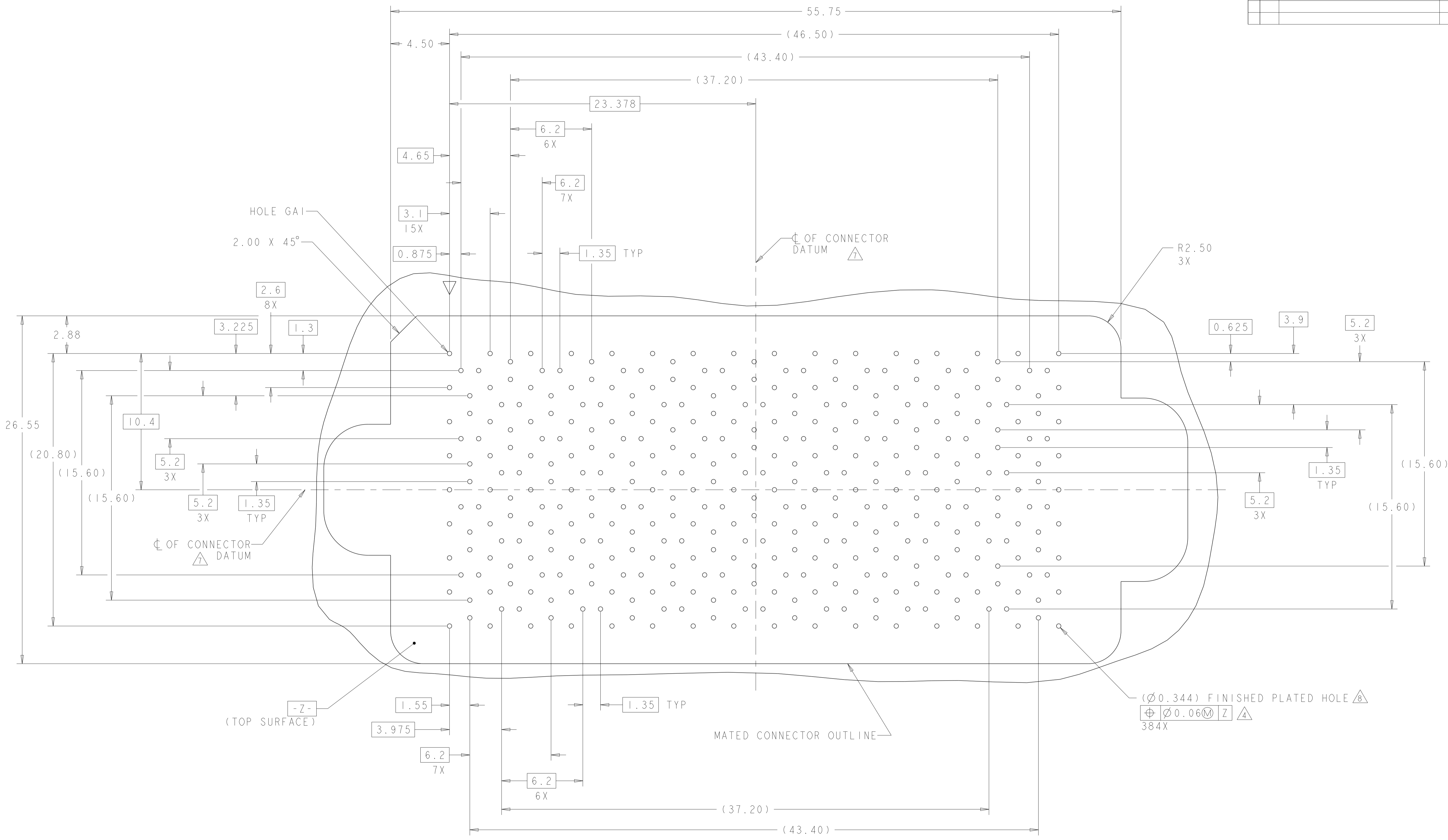
| LOC |     | DIST        |      | REVISIONS |      |  |  |
|-----|-----|-------------|------|-----------|------|--|--|
| P   | LTN | DESCRIPTION | DATE | DWN       | APVD |  |  |
| -   | -   | SEE SHEET 1 | -    | -         | -    |  |  |
|     |     |             |      |           |      |  |  |
|     |     |             |      |           |      |  |  |



**PCB LAYOUT AND PIN IDENTIFICATION**   
 SHOWN FROM CONNECTOR SIDE  
 SCALE 10:1

|  |  |                             |                                 |              |
|--|--|-----------------------------|---------------------------------|--------------|
| THIS DRAWING IS A CONTROLLED DOCUMENT. |  | DWN<br>D. RINGLER 20JAN2010 | TE Connectivity                 |              |
| DIMENSIONS:                            |  | CHK<br>D. TROUT 20JAN2010   |                                 |              |
| mm                                     | TOLERANCES UNLESS OTHERWISE SPECIFIED: | APVD<br>J. FEEDER 20JAN2010 | NAME<br>HEADER ASSEMBLY         |              |
|  | 0 PLC ±                                | PRODUCT SPEC                | 120/384                         |              |
|  | 2 PLC ±0.13                            | APPLICATION SPEC            | STRADA MESA MEZZANINE CONNECTOR |              |
|  | 3 PLC ±0.013                           | SIZE CAGE CODE DRAWING NO   | RESTRICTED TO                   |              |
|  | 4 PLC ±                                | 114-13249                   | A100779C=2132790                |              |
|  | ANGLES ±1                              | WEIGHT                      | -                               |              |
| MATERIAL                               | FINISH                                 | CUSTOMER DRAWING            | SCALE 6:1                       | SHEET 3 OF 4 |
|  |  |                             |                                 | REV A        |

| LOC |     | DIST        |      | REVISIONS |      |  |  |
|-----|-----|-------------|------|-----------|------|--|--|
| P   | LYR | DESCRIPTION | DATE | DWN       | APVD |  |  |
| -   | -   | SEE SHEET 1 | -    | -         | -    |  |  |
|     |     |             |      |           |      |  |  |
|     |     |             |      |           |      |  |  |



**PCB HOLE PATTERN**  
 SHOWN FROM CONNECTOR SIDE  
 SCALE 7:1

|  |              |                             |                                 |
|--|--------------|-----------------------------|---------------------------------|
| THIS DRAWING IS A CONTROLLED DOCUMENT. |              | DWN<br>D. RINGLER 20JAN2010 | TE Connectivity                 |
| DIMENSIONS:                            |              | CHK<br>D. TROUT 20JAN2010   |                                 |
| TOLERANCES UNLESS OTHERWISE SPECIFIED: |              | APVD<br>J. FEEDER 20JAN2010 | NAME<br>HEADER ASSEMBLY         |
| mm                                     | 0 PLC ±      | PRODUCT SPEC                | 120/384                         |
|  | 1 PLC ±0.13  | APPLICATION SPEC            | STRADA MESA MEZZANINE CONNECTOR |
|  | 2 PLC ±0.013 | SIZE CAGE CODE DRAWING NO   | RESTRICTED TO                   |
|  | 3 PLC ±      | 114-13249                   | A100779C=2132790                |
|  | 4 PLC ±      | WEIGHT                      |                                 |
|  | ANGLES ±1    | CUSTOMER DRAWING            | SCALE 6:1 SHEET 4 OF 4 REV A    |
| MATERIAL                               | FINISH       |                             |                                 |