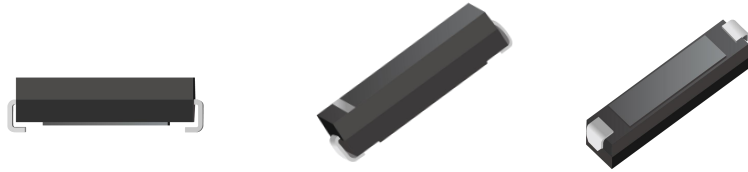




FEATURES

- Fast reverse recovery time
- SMA Package
- Tj:-40°C~+120°C
- ROHS compliant



Device Electrical Characteristics(Ta=25°C Unless otherwise noted)

| Items | Symbol | Conditions | Value | Unit |
|---------------------------------------|-------------|---------------------------------------|----------|---------|
| Max. Repetitive Peak Reverse Voltage | V_{RRM} | $I_R=0.5\mu A$ | 15 | KV |
| Average Forward Current max. | $I_{F(AV)}$ | Ta=55°C | 30 | mA |
| Max. Forward Voltage Drop | V_{FM} | $I_F=I_{F(AV)}$ | 29 | V |
| Max. Surge Current | I_{FSM} | 10msec, half sine | 3.0 | A |
| Max. Reverse Current | I_{RM1} | $V_R=V_{RRM}$ | 0.5 | μA |
| Max. High Temperature Reverse Current | I_{RM2} | Ta=100°C $V_R=V_{RRM}$ | 5 | μA |
| Max. Reverse Recovery Time | trr | $I_F=20mA, I_R=40mA$ $I_{RR}=10mA$ | 80 | nS |
| Max. Temperature Junction | Tj | | 120 | °C |
| Storage Temperature Range | Tstg | | -55to160 | °C |

Mechanical Data

