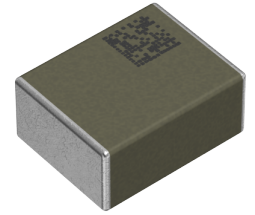


Applications	Automotive Grade
Feature	AEC-Q200
	Wire Wound
	Magnetic Shield
	Metal Core
Series Type	BCL
Status	Production
Brand	TDK



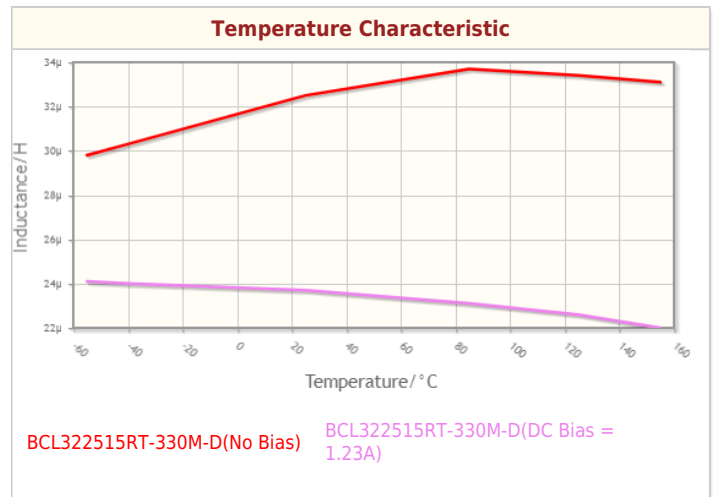
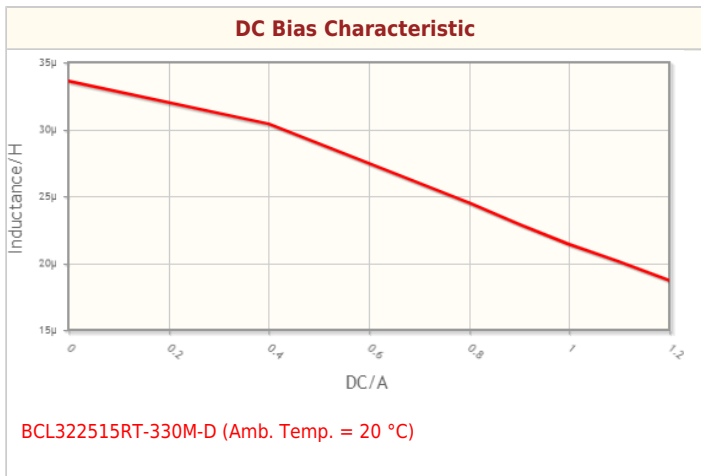
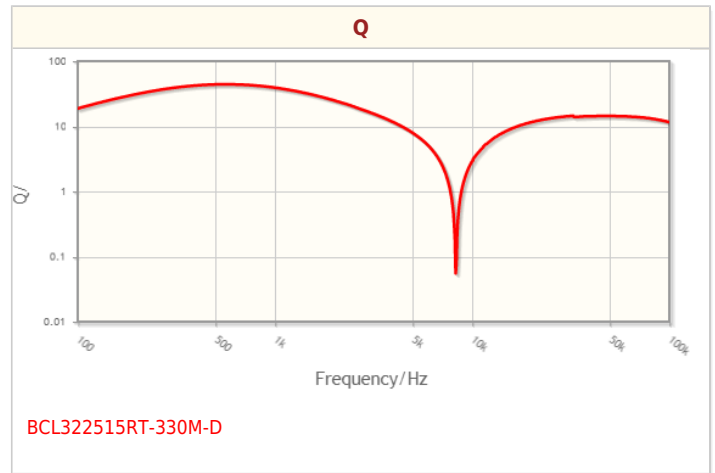
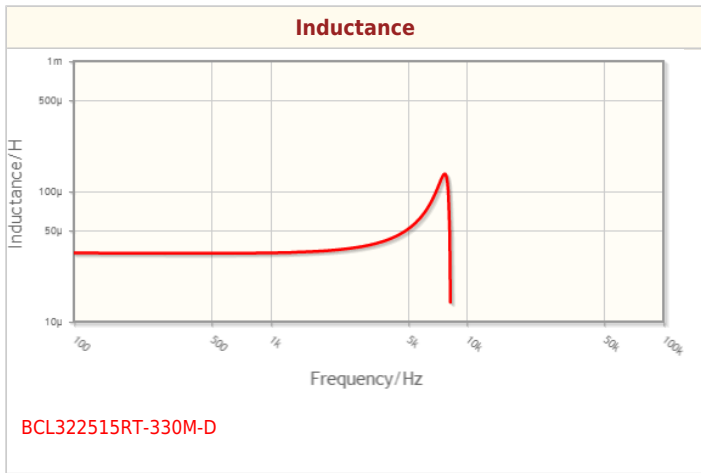
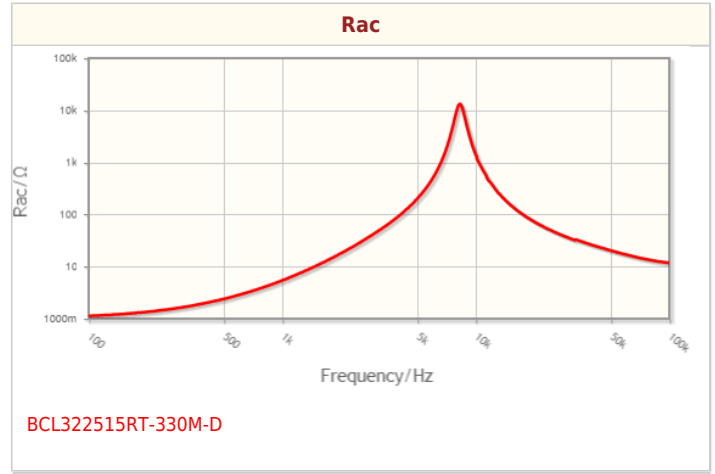
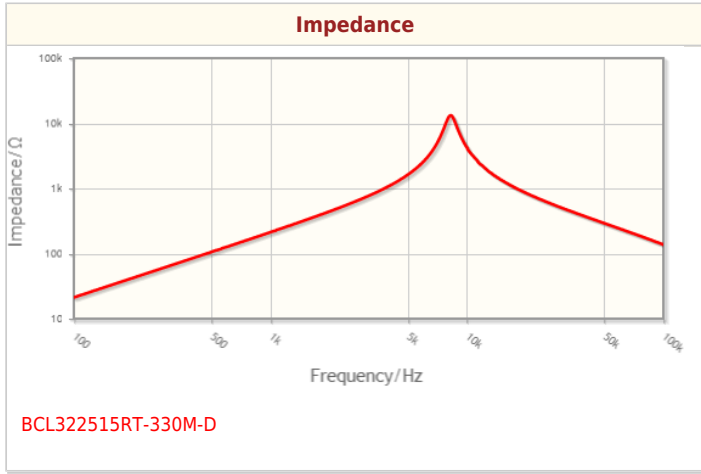
Size	
Length(L)	3.20mm ±0.20mm
Width(W)	2.50mm ±0.20mm
Thickness Height	1.50mm Max.
Recommended Land Pattern (A)	1.00mm Nom.
Recommended Land Pattern (B)	1.60mm Nom.
Recommended Land Pattern (C)	2.50mm Nom.

Electrical Characteristics	
Inductance	33µH ±20% at 1MHz
Rated Current (L Change) [Typ.]	850mA (30% Down)
Rated Current (L Change) [Max.]	680mA (30% Down)
Rated Current (Temperature Rise) [Typ.]	750mA (40°C Rise)
Rated Current (Temperature Rise) [Max.]	
DC Resistance [Typ.]	970mΩ
DC Resistance [Max.]	1.11Ω
Self Resonant Frequency [Min.]	
Self Resonant Frequency [Typ.]	
Q [Min.]	
Q [Typ.]	

Other	
Operating Temp. Range (Including Self-Temp. Rise)	-55 to 155°C
Soldering Method	Reflow
	Iron Soldering
AEC-Q200	YES
Packing	Embossed (Plastic)Taping [180mm Reel, Tape width 8mm]
Package Quantity	2000pcs
Weight	0.067g

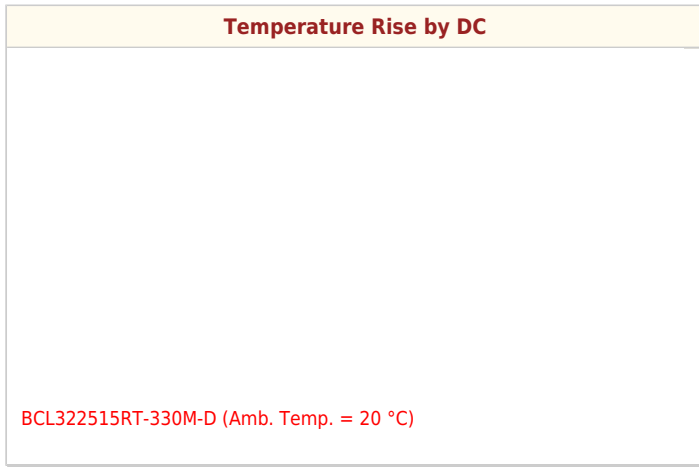
! Images are for reference only and show exemplary products.
! This PDF document was created based on the data listed on the TDK Corporation website.
! All specifications are subject to change without notice.

Characteristic Graphs(This is reference data, and does not guarantee the products characteristics.)



! Images are for reference only and show exemplary products.
! This PDF document was created based on the data listed on the TDK Corporation website.
! All specifications are subject to change without notice.

Characteristic Graphs(This is reference data, and does not guarantee the products characteristics.)



Associated Images

