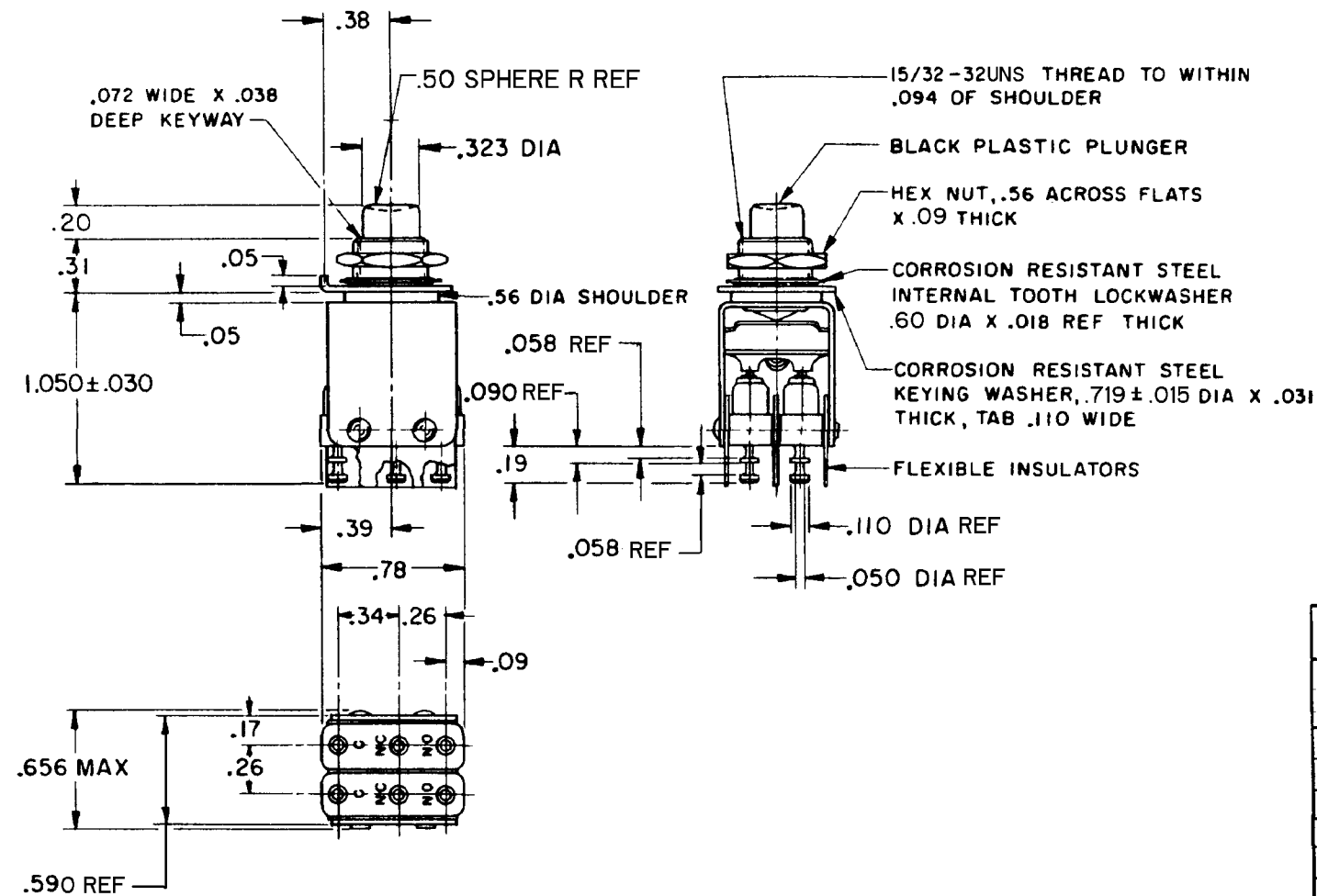


CATALOG LISTING
 2PB11-T2
 PAGE 1 OF 1
 REPLACES
 RELEASE NO
 CHECK
 REVISIONS
 A C082865
 JAL 25 APR 96
 B C083692
 DLT 24 JAN 97
 C C093156
 GJW 20 JUL 98
 D CO-93593
 PPF 22 OCT 98
 E CO-94273
 GJW 15 APR 99
 CHECK JAF 22 OCT 98
 CHECK JAF 25 APR 96
 DRAWN
 JAL 25 APR 96
 FORMTEK



THIS DRAWING COVERS A PROPRIETARY ITEM AND IS THE PROPERTY OF MICRO SWITCH, A DIVISION OF HONEYWELL. THIS DRAWING IS NOT TO BE COPIED OR USED WITHOUT THE APPROVAL OF MICRO SWITCH.

CHARACTERISTICS	ELECTRICAL DATA
	CONTACT ARRANGEMENT

THIRD ANGLE PROJECTION

 SCALE FULL
 DO NOT SCALE PRINT
 UNLESS OTHERWISE SPECIFIED TOLERANCES ARE
 ONE PLACE (.0) ± .030
 TWO PLACE (.00) ± .015
 THREE PLACE (.000) ± .005
 ANGLES ±
 WEIGHT .55 OZ APPROX

SPECIFICATION DETAILS:		FOR END CUSTOMER USE	
STANDARD:	CONFORMS TO MILITARY P/N M8805/23-001 EXCEPT AS NOTED		
CONSTRUCTION:			
ENCLOSURE	UNSEALED		
CONTACT MATERIAL	FINE SILVER		
CASE, COVER, & PLUNGER	PHENOLIC		
CIRCUIT CONFIGURATION "IISM" TYPE BASIC	SPDT, NORMALLY CLOSED (2)		
PUSHBUTTON PLUNGER TRAVEL	SWITCHES DO NOT NECESSARILY OPERATE SIMULTANEOUSLY		
TERMINATION	BRASS WITH 60/40 TIN/LEAD SOLDER		
EXPOSED METALS	STAINLESS STEEL		
ELECTRICAL RATINGS:	250 VAC - 5 AMP		
	30 VDC INDUCTIVE RESISTIVE		
SEA LEVEL	3.0 AMPS	5.0 AMPS	
50,000 FT	2.5 AMPS	5.0 AMPS	
	MAXIMUM INRUSH - 24.0 AMPS		
DIELECTRIC			
FROM COMMON TO N.O. TERMINAL	1000 VOLTS RMS		
CHARACTERISTICS			
MECHANICAL LIFE	50,000 OPERATIONS		
ELECTRICAL LIFE	50,000 OPERATIONS		
TEMPERATURE RANGE	-55°C TO -85°C		
OPERATING FORCE	3.0 LB MAX		
TOTAL TRAVEL	.100 APPROX		
MOUNTING TORQUE	25 POUND INCHES		
HARDWARE	FURNISHED UNASSEMBLED		
REPLACEMENT	19PA39-TL		