

NOTES: UNLESS OTHERWISE SPECIFIED

1. INTERFACE COMPLIANT TO SMPTE 304 SPECIFICATION.

2. MATERIAL SPECIFICATIONS:

CONTACTS: COPPER ALLOY
ALIGNMENT PINS: BRASS PER ASTM B16
CRIMP SLEEVE: PHOS. BRONZE
O-RINGS AND STRAIN RELIEF: SILICONE RUBBER
ALL PLASTIC PARTS: 20% GLASS FILLED POLYPROPYLENE
ALL OTHER METAL PARTS: 303 STAINLESS STEEL PER ASTM A582

3. FINISH SPECIFICATIONS:

STAINLESS STEEL PARTS: PASSIVATE
CONTACTS: .000100 MIN GOLD PER ASTM B488 OVER
.000080 MIN NICKEL PER AMS-QQN-290 (RoHS)
CRIMP SLEEVE: .000100 MIN NICKEL PER AMS-QQ-N-290 OVER
COPPER FLASH PER ASTM B734 (RoHS)

4. ELECTRICAL SPECIFICATIONS:

LOW VOLTAGE CONTACTS: 42 - 60 VAC, 1 AMP
AUX ELECTRICAL CONTACTS: 600 VAC, 10 AMP

5. ENVIRONMENTAL:

OPERATING TEMPERATURE RATING: -40°C TO 75°C
NON-OPERATING/STORAGE TEMPERATURE RATING: -40°C TO 85°C
HUMIDITY: <95 RH (AT 40°C)

6. OPTICAL:

WAVELENGTH: 1100nm - 1350nm
INSERTION LOSS: 0.3dB TYPICAL, 0.5dB MAX
RETURN LOSS: > -45dB, -50dB TYPICAL

7. REPLACEMENT KITS:

CONTACT KIT: 7760-000-00709Z

8. CABLE PREPARATION AND STRIPPING PROCEDURE: CAP-E05.

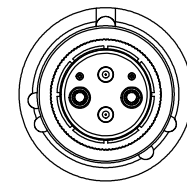
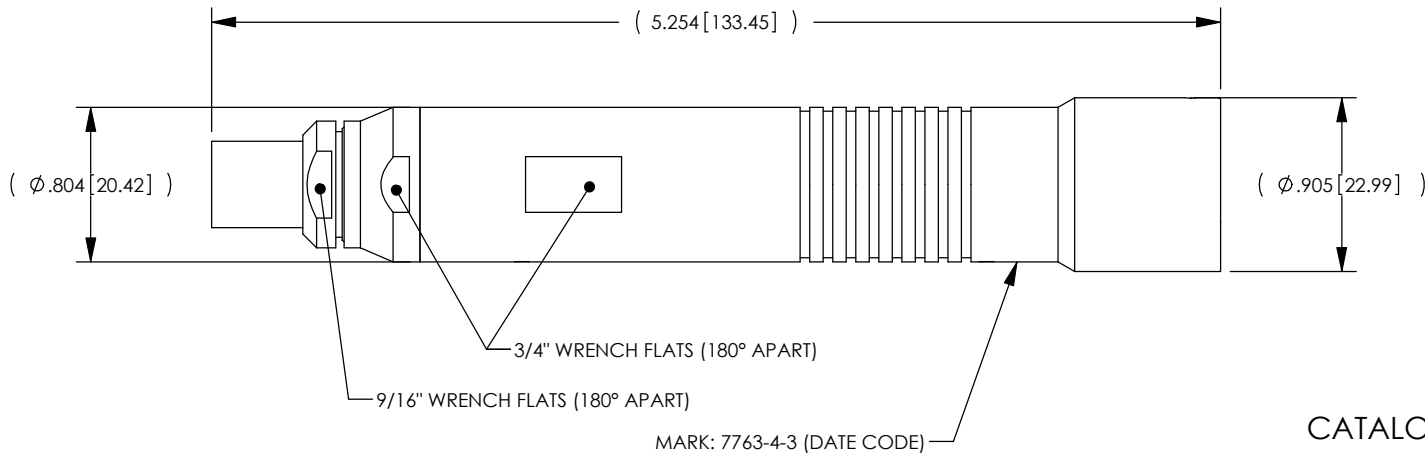
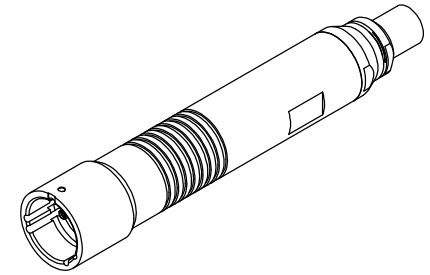
9. OPTIONAL ENVIRONMENTAL BOOT 7760-000-00705Z SOLD SEPARATELY.

10. RED LDPE DUST CAP INCLUDED (NOT SHOWN)

11. CRIMP TOOLING:

FOR FACTORY APPLICATION USE HAND TOOL KTH-1000 AND DIE KTH-2035
FOR FIELD APPLICATION USE HAND TOOL KTH-5000 AND DIE KTH-5018

REV	DESCRIPTION	BY DATE	APPD
05	REVISED PER ER30231	KFC 01/07/10	XXX

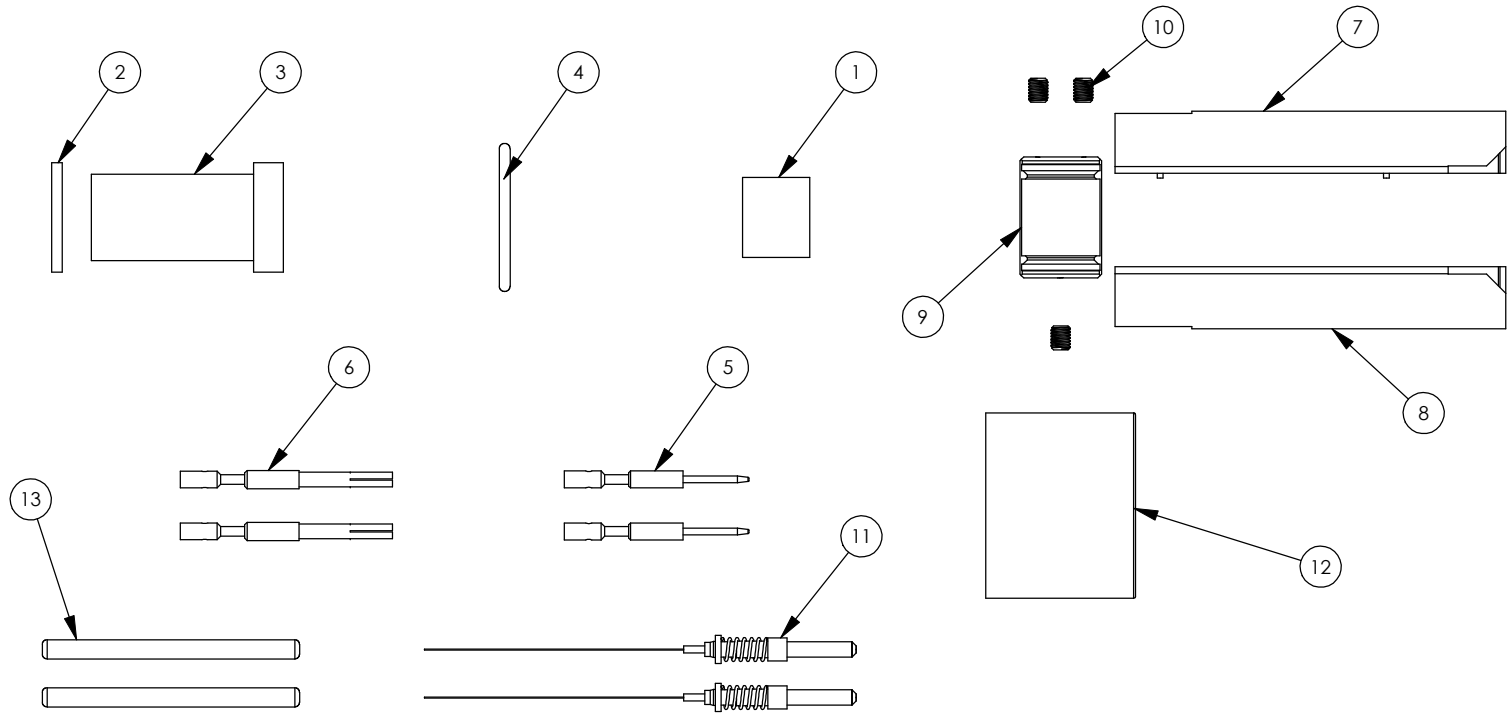


CATALOG P/N: 7763-4-3

PER ASME Y14.5M-1994 UNLESS OTHERWISE SPECIFIED: DIMENSIONS ARE IN INCHES [MM] TOLERANCES: DECIMAL: .XX [X.X] ± .01 [0.3] .XXX [X.XX] ± .005 [0.13] .XXXX [X.XXX] ± .XXXX ANGLES: ± 2° SCALE: 1:1				KINGS by WINCHESTER ELECTRONICS Winchester Electronics Corporation 62 Barnes Industrial Road North Wallingford, Connecticut 06492	
CUSTOMER SALES DRAWING			TRI-LOC, SMPTE 304, RECEPTACLE PRE-POLISHED		
DRAWN	DATE	APPROVED	DATE	THIRD ANGLE	
PSM	04/06/10	WPM	04/07/10		
APPROVED	DATE	APPROVED	DATE		
JCF	04/07/10	XXX	XX/XX/XX		
A SD7763-4-3				SHT	OF
				1	2
				REV	05

REV	DESCRIPTION	BY DATE	APPD
05	REVISED PER ER30231	KFC 01/07/10	XXX

REPLACEMENT COMPONENT ORDERING NUMBERS



13	VNFP01-900-34	SPLICE PROTECTOR SLEEVE, 34MM	50
12	VNSC-748U	RED LDPE DUST CAP	25
11	7760-000-00711Z	FIBER OPTIC CONNECTOR STUB	2
10	78-0102U	#4-40 HEX SET SCREW	10
9	78-1012U	STRENGTH MEMBER SUPPORT CLAMP	10
8	78-3011U	JACK INSULATOR HALF SIDE "B"	25
7	78-3010U	JACK INSULATOR HALF SIDE "A"	25
6	78-4204U	JACK MALE CRIMP CONTACT	50
5	78-4203U	JACK FEMALE CRIMP CONTACT	50
4	78-0705U	REAR O-RING	25
3	78-0701U	REAR CABLE SEAL	25
2	78-0301U	WASHER FOR REAR CABLE SEAL	25
1	1-8156U	CRIMP SLEEVE (CABLE SHIELD FERRULE)	25
ITEM NO.	PART NO.	Description	PLATING CODE(S)

CATALOG P/N: 7763-4-3

<small>PER ASME Y14.5M-1994 UNLESS OTHERWISE SPECIFIED: DIMENSIONS ARE IN INCHES [MM] TOLERANCES: DECIMAL: .XX [X.X] ± .01 [0.3] .XXX [X.XX] ± .005 [0.13] .XXXX [X.XXX] ± .XXXX ANGLES: ± 2° SCALE: 1:1</small>		 by WINCHESTER Electronics Corporation 62 Barnes Industrial Road North Wallingford, Connecticut 06492	
CUSTOMER SALES DRAWING		THIRD ANGLE	
<small>DRAWN DATE</small> PSM 04/06/10	<small>APPROVED DATE</small> WPM 04/07/10	TRI-LOC, SMPTE 304, RECEPTACLE PRE-POLISHED	
<small>APPROVED DATE</small> JCF 04/07/10	<small>APPROVED DATE</small> XXX XX/XX/XX	A	SD7763-4-3
		<small>SHT OF</small> 2 2	<small>REV</small> 05