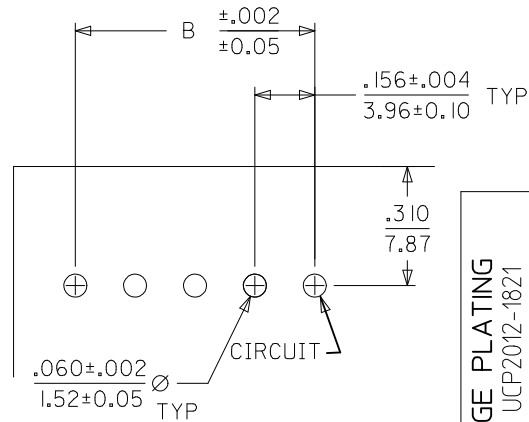


NOTES:

- HOUSING MATERIAL: NYLON, UL 94V-2
- FINISH:
  - (197) OVERALL REFLOWED MATTE TIN: 0.00152/0.00060 MIN. OVER 0.00127/0.00050 MIN. NICKEL OVERALL.
  - (208) SELECT GOLD: .000015/0.00038 MIN. SELECT TIN: .000100/0.00254 MIN. OVERALL NICKEL UNDERPLATE: .000050/0.00127 MIN.
  - (909) OVERALL HOT TIN DIP: .000100/0.00254 MIN.
- PRODUCT SPECIFICATION: PS-08-50
- PACKAGING INFO: SEE CHARTS.
- SOLDERABILITY SPECIFICATION: SMES-152.
- TOP ENTRY OPTIONS: SEE DRAWING SDA-2145-002.
- BOTTOM ENTRY OPTIONS: SEE DRAWING SDA-2145-003
- .183/4.64 DIMENSION IS BOTTOM OF HOUSING TO CENTER OF MATING PIN AND DOES NOT REFLECT CENTER OF THE CONNECTOR HOUSING WINDOW DIMENSION.
- THIS PART CONFORMS TO CLASS B REQUIREMENTS OF COSMETIC SPECIFICATION.

CKT	A	B
02	.308 7.82	.156±.005 3.96±0.13
03	.464 11.79	.312±.005 7.92±0.13
04	.620 15.75	.468±.005 11.89±0.13
05	.776 19.71	.624±.005 15.85±0.13
06	.932 23.67	.780±.005 19.81±0.13
07	1.088 27.64	.936±.010 23.77±0.25
08	1.244 31.60	1.092±.010 27.74±0.25
09	1.400 35.56	1.248±.010 31.70±0.25
10	1.556 39.52	1.404±.010 35.66±0.25
11	1.712 43.48	1.560±.010 39.62±0.25
12	1.868 47.45	1.716±.010 43.59±0.25
13	2.024 51.41	1.872±.010 47.55±0.25
14	2.180 55.37	2.028±.014 51.51±0.36
15	2.336 59.33	2.184±.014 55.47±0.36



PCB LAYOUT: COMPONENT SIDE  
RECOMMENDED PCB THICKNESS: .062/1.57

CHANGE PLATING EC NO: UCP2012-1821 DRWN:MMSTROH 2012/01/04 CHKD:MKIPPER 2012/01/05 APPR:FSM/TH 2012/02/02	QUALITY SYMBOLS ▽F=0 ▽E=0 ▽F=0	GENERAL TOLERANCES (UNLESS SPECIFIED)		DIMENSION STYLE <b>IN/MM</b>		SCALE	DESIGN UNITS	THIRD ANGLE PROJECTION	
			mm	INCH	DRAWN BY SAMIEC	DATE	TITLE	KK 156 PCB ASSY RIGHT ANGLE ENTRY	
AA	REV	4 PLACES	± ---	± ---	CHECKED BY SAMIEC	DATE 98/10/09	APPROVED BY MARGULIS		DOCUMENT NO. SDA-2145-001
		3 PLACES	± ---	± .010	MATERIAL NO.		MOLEX INCORPORATED		
		2 PLACES	± 0.25	± .015	SEE CHART		SHEET NO. 1 OF *		
		1 PLACE	± 0.38	± ---	DRAFT WHERE APPLICABLE MUST REMAIN WITHIN DIMENSIONS		THIS DRAWING CONTAINS INFORMATION THAT IS PROPRIETARY TO MOLEX INCORPORATED AND SHOULD NOT BE USED WITHOUT WRITTEN PERMISSION		



# KK 156 PCB ASSY

## 2145 RIGHT ANGLE SERIES

<b>OPTIONS</b>	RAMPS	YES	RAMPS	YES
	HOOKS:	YES	HOOKS:	YES
	COLOR:	WHITE	COLOR:	WHITE
	MOLD VOID:	NONE	MOLD VOID:	NONE
	TERM MATL:	PHOS BRONZE	TERM MATL:	PHOS BRONZE
	CONTACT:	STANDARD	CONTACT:	STANDARD
	PC TAIL (C):	.145 / 3.68	PC TAIL (C):	.145 / 3.68
	PLATING:	197 - TIN	PLATING:	208 - GOLD
	TERM VOID:	NONE	TERM VOID:	NONE
	PACKAGING:	TRAY PK-2145-001	PACKAGING:	TRAY PK-2145-001
	Ckts	Material No	Material No	
2	09-52-1026	09-62-4027		
3	09-52-1036	09-62-4037		
4	09-52-1046	09-62-4047		
5	09-52-1056	09-62-4057		
6	09-52-1066	09-62-4067		
7	09-52-1076	09-62-4077		
8	09-52-1086	09-62-4087		
9	09-52-1096	09-62-4097		
10	09-52-1106	09-62-4107		
11	09-52-1116	09-62-4117		
12	09-52-1126	09-62-4127		
13	09-52-1136	09-62-4137		
14	09-52-1146	09-62-4147		
15	09-52-1156	09-62-4157		

<b>REV:</b>  <b>AA</b>	2/2/2012  MMSTROH	<b>TITLE:</b>  <b>KK 156 PCB ASSY 2145 RIGHT ANGLE SERIES</b>	<u>SHEET No.</u>  <b>- 2 -</b>
<b>DOCUMENT NUMBER:</b> <b>SDA-2145-001</b>		<b>CREATED / REVISED BY:</b> <b>MMSTROH</b>	<b>CHECKED BY:</b> <b>MKIPPER</b>
		<b>APPROVED BY:</b> <b>FSMITH</b>	



# KK 156 PCB ASSY

## 2145 RIGHT ANGLE SERIES

OPTIONS	RAMPS	YES					RAMPS	YES
	HOOKS:	YES					HOOKS:	YES
	COLOR:	WHITE					COLOR:	WHITE
	MOLD VOID:	NONE					MOLD VOID:	NONE
	TERM MATL:	BRASS					TERM MATL:	BRASS
	CONTACT:	STANDARD					CONTACT:	STANDARD
	PC TAIL (C):	.145 / 3.68					PC TAIL (C):	.145 / 3.68
	PLT CODE:	197 - TIN					PLT CODE:	P909 - TIN
	TERM VOID:	NONE					TERM VOID:	NONE
	PACKAGING:	TRAY PK-2145-001					PACKAGING:	TRAY PK-2145-001
Ckt	Material No					Material No		
2	09-52-1021					09-52-3021		
3	09-52-1031					09-52-3031		
4	09-52-1041					09-52-3041		
5	09-52-1051					09-52-3051		
6	09-52-1061					09-52-3061		
7	09-52-1071					09-52-3071		
8	09-52-1081					09-52-3081		
9	09-52-1091					09-52-3091		
10	09-52-1101					09-52-3101		
11	09-52-1111					09-52-3111		
12	09-52-1121					09-52-3121		
13	09-52-1131					09-52-3131		
14	09-52-1141					09-52-3141		
15	09-52-1151					09-52-3151		

<b>REV:</b>	<b>2/2/2012</b> <b>MMSTROH</b>	<b>TITLE:</b> <b>KK 156 PCB ASSY</b> <b>2145 RIGHT ANGLE SERIES</b>	<b>SHEET No.</b> <b>- 3 -</b>
<b>DOCUMENT NUMBER:</b>	<b>SDA-2145-001</b>	<b>CREATED / REVISED BY:</b>	<b>MMSTROH</b>
		<b>CHECKED BY:</b>	<b>MKIPPER</b>
		<b>APPROVED BY:</b>	<b>FSMITH</b>



# KK 156 PCB ASSY

## 2145 RIGHT ANGLE SERIES

OPTIONS	RAMPS:	YES	RAMPS:	YES	RAMPS:	NO	RAMPS:	YES
	HOOKS:	YES	HOOKS:	YES	HOOKS:	YES	HOOKS:	YES
	COLOR:	BLACK	COLOR:	WHITE	COLOR:	WHITE	COLOR:	WHITE
	MOLD VOID:	NONE	MOLD VOID:	NONE	MOLD VOID:	NONE	MOLD VOID:	NONE
	TERM MATL:	BRASS	TERM MATL:	BRASS	TERM MATL:	BRASS	TERM MATL:	BRASS
	CONTACT:	STANDARD	CONTACT:	STANDARD	CONTACT:	STANDARD	CONTACT:	LOW INSERTION
	PC TAIL (C):	.145 / 3.68	PC TAIL (C):	.145 / 3.68	PC TAIL (C):	.145 / 3.68	PC TAIL (C):	.145 / 3.68
	PLT CODE:	P909 – TIN	PLT CODE:	208 – 15 GOLD	PLT CODE:	P909 – TIN	PLT CODE:	P909 – TIN
	TERM VOID:	NONE	TERM VOID:	NONE	TERM VOID:	NONE	TERM VOID:	NONE
	PACKAGING:	TRAY PK-2145-001	PACKAGING:	TRAY PK-2145-001	PACKAGING:	TRAY PK-2145-001	PACKAGING:	TRAY PK-2145-001
Ckt	Material No		Material No		Material No		Material No	
2	09-53-3021		09-62-3021					
3	09-53-3031		09-62-3031				09-52-3035	
4	09-53-3041		09-62-3041				09-52-3045	
5	09-53-3051		09-62-3051				09-52-3055	
6	09-53-3061		09-62-3061				09-52-3065	
7	09-53-3071		09-62-3071					
8	09-53-3081		09-62-3081				09-52-3085	
9	09-53-3091		09-62-3091		09-52-2097		09-52-3095	
10	09-53-3101		09-62-3101				09-52-3105	
11	09-53-3111		09-62-3111					
12	09-53-3121		09-62-3121				09-52-3125	
13	09-53-3131		09-62-3131					
14	09-53-3141		09-62-3141					
15	09-53-3151		09-62-3151				09-52-3155	

<b>REV:</b>	<b>2/2/2012</b> <b>MMSTROH</b>	<b>TITLE:</b>	<b>KK 156 PCB ASSY</b> <b>2145 RIGHT ANGLE SERIES</b>	<u>SHEET No.</u> <b>- 4 -</b>			
<b>AA</b>							
<b>DOCUMENT NUMBER:</b>	<b>SDA-2145-001</b>	<b>CREATED / REVISED BY:</b>	<b>MMSTROH</b>	<b>CHECKED BY:</b>	<b>MKIPPER</b>	<b>APPROVED BY:</b>	<b>FSMITH</b>



# KK 156 PCB ASSY

## 2145 RIGHT ANGLE SERIES

			RAMPS	YES	RAMPS	YES	RAMPS	
			HOOKS:	YES	HOOKS:	YES	HOOKS:	
			COLOR:	WHITE	COLOR:	WHITE	COLOR:	
			MOLD VOID:	NONE	MOLD VOID:	NONE	MOLD VOID:	
			TERM MATL:	PHOS BRONZE	TERM MATL:	PHOS BRONZE	TERM MATL:	
			CONTACT:	STANDARD	CONTACT:	LOW FORCE	CONTACT:	
			PC TAIL (C):	.145 / 3.68	PC TAIL (C):	.145 / 3.68	PC TAIL (C):	
			PLT CODE:	P909 – TIN	PLT CODE:	197 – TIN	PLT CODE:	
			TERM VOID:	NONE	TERM VOID:	NONE	TERM VOID:	
			PACKAGING:	TRAY PK-2145-001	PACKAGING:	TRAY PK-2145-001	PACKAGING:	
			Material No			Material No		
			09-52-3028			50-29-0036		
			09-52-3038			50-29-0037 09-52-1030		
			09-52-3048			50-29-0038		
			09-52-3058			50-29-0039		
			09-52-3068			09-52-1060		
			09-52-3078			50-29-0040		
			09-52-3088			09-52-1080		
			09-52-3098			50-29-0041		
			09-52-3108			09-52-1100		
			09-52-3118			50-29-0042		
			09-52-3128			09-52-1120		
			09-52-3138			50-29-0043		
			09-52-3148			09-52-1140		
			09-52-3158			50-29-0044		

<b>REV:</b>	<b>2/2/2012</b>	<b>TITLE:</b>	<b>SHEET No.</b>
<b>AA</b>	<b>MMSTROH</b>	<b>KK 156 PCB ASSY</b>	<b>- 5 -</b>
		<b>2145 RIGHT ANGLE SERIES</b>	
<b>DOCUMENT NUMBER:</b>	<b>CREATED / REVISED BY:</b>	<b>CHECKED BY:</b>	<b>APPROVED BY:</b>
<b>SDA-2145-001</b>	<b>MMSTROH</b>	<b>MKIPPER</b>	<b>FSMITH</b>



# KK 156 PCB ASSY

## 2145 RIGHT ANGLE SERIES

CUSTOM PRODUCTS

OPTIONS	RAMPS	YES	RAMPS		RAMPS		RAMPS	
	HOOKS:	YES	HOOKS:		HOOKS:		HOOKS:	
	COLOR:	WHITE	COLOR:		COLOR:		COLOR:	
	MOLD VOID:	NONE	MOLD VOID:		MOLD VOID:		MOLD VOID:	
	TERM MATL:	BRASS	TERM MATL:		TERM MATL:		TERM MATL:	
	CONTACT:	STANDARD	CONTACT:		CONTACT:		CONTACT:	
	PC TAIL (C):	.145 / 3.68	PC TAIL (C):		PC TAIL (C):		PC TAIL (C):	
	PLT CODE:	P909 – TIN	PLT CODE:		PLT CODE:		PLT CODE:	
	TERM VOID:	NONE	TERM VOID:		TERM VOID:		TERM VOID:	
	PACKAGING:	TRAY PK-2145-001	PACKAGING:		PACKAGING:		PACKAGING:	
Ckt	Material No.	Engineering No.	Material No.	Engineering No.	Material No.	Engineering No.	Material No.	Engineering No.
2								
3								
4								
5								
6								
7								
8								
9								
10								
11								
12	50-29-1880	A-2145-AA12A-P909						
13								
14								
15								

REV:		<u>TITLE:</u>	<u>SHEET No.</u>
<b>A</b>		<b>KK 156 PCB ASSY 2145 RIGHT ANGLE SERIES</b>	<b>- 2 -</b>
<u>DOCUMENT NUMBER:</u>	<u>CREATED / REVISED BY:</u>	<u>CHECKED BY:</u>	<u>APPROVED BY:</u>
<b>SDA-2145-004</b>	<b>DRATNOL 12/09/2004</b>	<b>SAMIEC 12/09/2004</b>	<b>MARGULIS 12/09/2004</b>