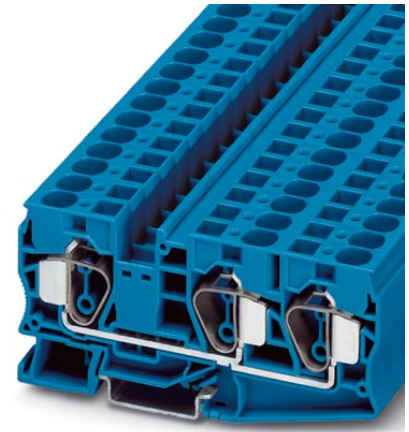


ST 16-TWIN BU


Order No.: 3035331



<http://eshop.phoenixcontact.de/phoenix/treeViewClick.do?UID=3035331>

Feed-through modular terminal block, Type of connection: Spring-cage connection, Spring-cage connection, Cross section: 0.2 mm² - 25 mm², AWG 24 - 4, Width: 12.2 mm, Color: blue, Mounting type: NS 35/15, NS 35/7.5

Commercial data

| | |
|--------------------------|--|
| GTIN (EAN) |  4 046356 100915 |
| sales group | A630 |
| Pack | 25 pcs. |
| Customs tariff | 85369010 |
| Catalog page information | Page 85 (CL-2009) |

Product notes

WEEE/RoHS-compliant since:
07/03/2006



<http://www.download.phoenixcontact.com>
Please note that the data given here has been taken from the online catalog. For comprehensive information and data, please refer to the user documentation. The General Terms and Conditions of Use apply to Internet downloads.

Technical data

General

| | |
|-----------------------|------|
| Number of levels | 1 |
| Number of connections | 3 |
| Color | blue |

| | |
|------------------------------------|----|
| Insulating material | PA |
| Inflammability class acc. to UL 94 | V0 |

Dimensions

| | |
|------------------|----------|
| Width | 12.2 mm |
| Length | 107.8 mm |
| Height NS 35/7.5 | 51.5 mm |
| Height NS 35/15 | 59 mm |

Technical data

| | |
|----------------------------------|--|
| Maximum load current | 90 A (with 25 mm ² conductor cross section) |
| Rated surge voltage | 8 kV |
| Pollution degree | 3 |
| Surge voltage category | III |
| Insulating material group | I |
| Connection in acc. with standard | IEC 60947-7-1 |
| Nominal current I _N | 76 A |
| Nominal voltage U _N | 800 V |
| Open side panel | ja |

Connection data

| | |
|---|----------------------|
| Conductor cross section solid min. | 0.2 mm ² |
| Conductor cross section solid max. | 25 mm ² |
| Conductor cross section stranded min. | 0.2 mm ² |
| Conductor cross section stranded max. | 16 mm ² |
| Conductor cross section AWG/kcmil min. | 24 |
| Conductor cross section AWG/kcmil max | 4 |
| Conductor cross section stranded, with ferrule without plastic sleeve min. | 0.25 mm ² |
| Conductor cross section stranded, with ferrule without plastic sleeve max. | 16 mm ² |
| Conductor cross section stranded, with ferrule with plastic sleeve min. | 0.25 mm ² |
| Conductor cross section stranded, with ferrule with plastic sleeve max. | 16 mm ² |
| 2 conductors with same cross section, stranded, TWIN ferrules with plastic sleeve, min. | 1.5 mm ² |
| 2 conductors with same cross section, stranded, TWIN ferrules with plastic sleeve, max. | 4 mm ² |

| | |
|---------------------------|------------------------|
| Type of connection | Spring-cage connection |
| Stripping length | 16 mm |
| Internal cylindrical gage | A7 |

Certificates / Approvals



Certification UL, VDE-PZI

Accessories

| Item | Designation | Description |
|------|-------------|-------------|
|------|-------------|-------------|

Assembly

| | | |
|---------|--------------|---|
| 3035357 | D-ST 16-TWIN | End cover, Length: 107.8 mm, Width: 2.2 mm, Color: gray |
|---------|--------------|---|

Bridges

| | | |
|---------|------------------|---|
| 3005950 | FBS 2-12 | Plug-in bridge, Number of positions: 2, Color: red |
| 3030886 | RB ST 16-(2,5/4) | Reducing bridge, Number of positions: 2, Color: red |

General

| | | |
|---------|-------------------|---|
| 0812146 | ZB 12,LGS:L1-N,PE | Zack marker strip, printed horizontally: 5-section, L1, L2, L3, N, PE, color: White |
|---------|-------------------|---|

Marking

| | | |
|---------|-------------------|---|
| 0812133 | ZB 12:SO/CMS | Zack marker strip, 5-section, divisible, special printing, marking according to customer requirements |
| 0812120 | ZB 12:UNPRINTED | Zack marker strip without color print: 5-section, for individual labeling with B-STIFT, ZB-T or CMS system, sufficient for labeling 50 terminal blocks per pack |
| 0809735 | ZBF 12:UNBEDRUCKT | Zack strip, flat, unprinted, 5-section, divisible, for labeling by the customer |

Plug/Adapter

| | | |
|---------|-----------|---------------------------------|
| 0201731 | MPS-IH BK | Insulating sleeve, Color: black |
| 0201689 | MPS-IH BU | Insulating sleeve, Color: blue |
| 0201702 | MPS-IH GN | Insulating sleeve, Color: green |
| 0201728 | MPS-IH GY | Insulating sleeve, Color: gray |

| | | |
|---------|-----------|----------------------------------|
| 0201676 | MPS-IH RD | Insulating sleeve, Color: red |
| 0201715 | MPS-IH VT | Insulating sleeve, Color: violet |
| 0201663 | MPS-IH WH | Insulating sleeve, Color: white |
| 0201692 | MPS-IH YE | Insulating sleeve, Color: yellow |
| 0201744 | MPS-MT | Test plugs |

Tools

| | | |
|---------|---------------|---|
| 1206612 | SZF 3-1,0X5,5 | Actuation tool, for ST terminal blocks, also suitable for use as a bladed screwdriver, size: 1.0 x 5.5 x 150 mm, 2-component grip, with non-slip grip |
|---------|---------------|---|

Diagrams/Drawings

Circuit diagram



ST 16-TWIN BU Order No.: 3035331

<http://eshop.phoenixcontact.de/phoenix/treeViewClick.do?UID=3035331>

Address

PHOENIX CONTACT Deutschland GmbH
Flachmarktstr. 8
32825 Blomberg, Germany
Phone +49 5235 3 12000
Fax +49 5235 3 41200
<http://www.phoenixcontact.de>



© 2011 Phoenix Contact
Technical modifications reserved;