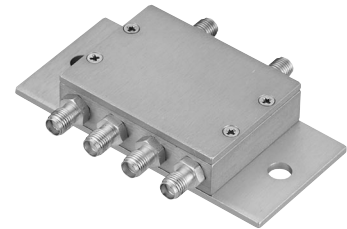


# SWITCHES

VERY HIGH ISOLATION, SPDT, DC to 5 GHz



## ZASW-2-50DR ZASWA-2-50DR



### FEATURES

- high isolation, 75 dB typical at 2 GHz
- integral TTL driver

### APPLICATIONS

- transmitter receiver isolation
- automated switching networks

CASE STYLE: CY353  
PRICE: \$ 89.95 ea.  
QTY: (1-9)

### ELECTRICAL SPECIFICATIONS AT 25°C

MODEL NO.	FREQ. GHz	REFLECTIVE	ABSORPTIVE	INSERTION LOSS (dB)								1dB COMPRESSION (dBm)				IN-OUT ISOLATION (dB)								CONNECTION
				FREQUENCY BAND								FREQUENCY BAND				FREQUENCY BAND								
				A1		A		B		C		A1	A	B	C	A1		A		B		C		
Typ.	Max.	Typ.	Max.	Typ.	Max.	Typ.	Max.	Typ.	Typ.	Typ.	Typ.	Typ.	Min.	Typ.	Min.	Typ.	Min.	Typ.	Min.					
ZASW-2-50DR	DC-5	●		1.3	2.0	1.7	2.5	1.8	3.0	3.0	4.5	17	20	20	19	100	80	90	75	82	65	68	46	lw
ZASWA-2-50DR	DC-5	●		1.3	2.0	1.7	2.5	1.8	3.0	3.0	4.5	17	20	20	19	100	80	90	75	82	65	68	46	lw

A1=DC-100MHz, A=0.1-1 GHz, B=1-2 GHz, C=2-5 GHz

### additional specifications

Model Series	ZASW, ZASWA
TTL Control Voltage	
Low threshold, V	0 min., 0.8 max.
High threshold, V	2 min., 5 max.
TTL Control Current	
High V, mA	5 max.
Low V, mA	0.2 max.
Positive Supply V.	+5+0.5/-0.1
Negative Supply V.	-5-0.5/+0.1
+5V power supply current, mA	22 typ., 60 max.
-5V power supply current, mA	22 typ., 60 max.
*VSWR (:1)	1.3 typ.
Rise/ Fall time (10%-90%), ns	3 typ., 15 max.
Switching time, 50% of Control to 90% RF (Turn-on), ns to 10% RF (Turn-off), ns	10 typ., 20 max.
**Video Leakage, mVp-p	140 typ.
Temperature, °C operating	-20 to 85
storage	-55 to 150

### control logic

TTL Control Port	RF outputs	
	1	2
High	Off	On
LOW	On	Off

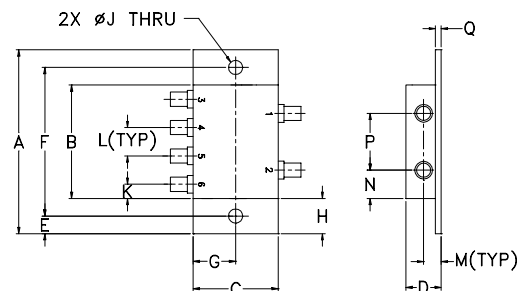
### NOTES:

- \* For output ports when in "ON" condition for reflective switch. Up to 4 GHz for both models at all ports
  - \*\* Video leakage or break through is defined as leakage of TTL switching signal to RF output ports.
1. Absolute maximum power and voltage ratings:  
RF input power, 250 mW.  
Supply voltage: ±6 V DC
  2. OFF state of RF output is low impedance.
  3. Prices and specifications subject to change without notice.

### PIN CONFIGURATION

PORT	lw
RF IN	1
RF OUT 1	3
RF OUT 2	6
TTL IN	4
+5V	2
-5V	5

### OUTLINE DRAWING



### OUTLINE DIMENSIONS (inch/mm)

A	B	C	D	E	F	G	H
3.24	2.00	1.50	.62	.31	2.620	.75	.62
82.30	50.80	38.10	15.75	7.87	66.55	19.05	15.75
J	K	L	M	N	P	Q	wt.
.25	.25	.50	.31	.50	1.00	.13	grams
6.35	6.35	12.70	7.87	12.70	25.40	3.30	65.0

REV. B  
M70448  
ED-7378  
ZASWA-2-50DR  
DJ/TD/CP  
000211



INTERNET <http://www.minicircuits.com>  
P.O. Box 350166, Brooklyn, New York 11235-0003 (718) 934-4500 Fax (718) 332-4661  
Distribution Centers/ NORTH AMERICA 800-654-7949 • 417-335-5935 • Fax 417-335-5945 • EUROPE 44-1252-835094 • Fax 44-1252-837010

ISO 9001 CERTIFIED