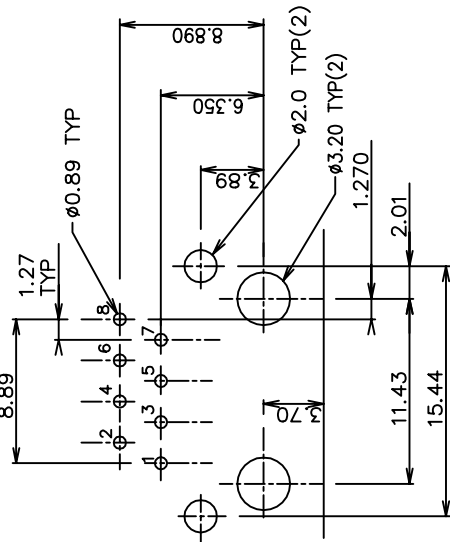
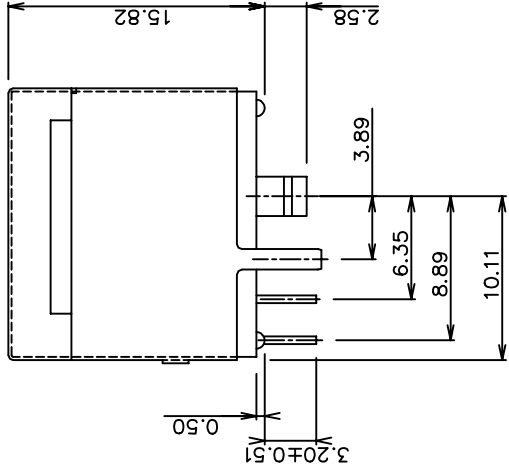
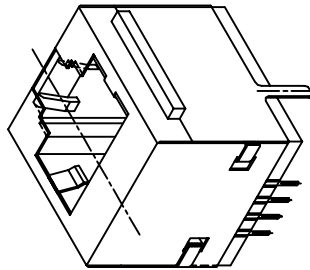
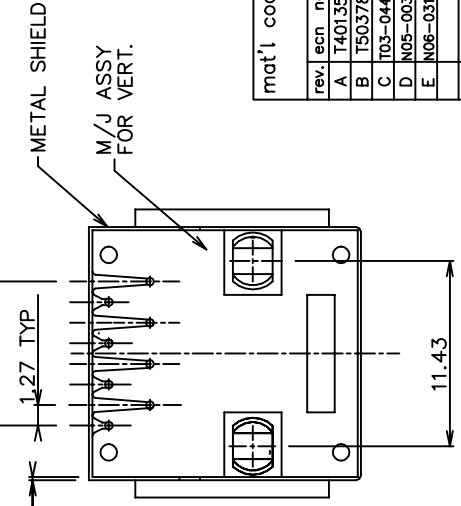
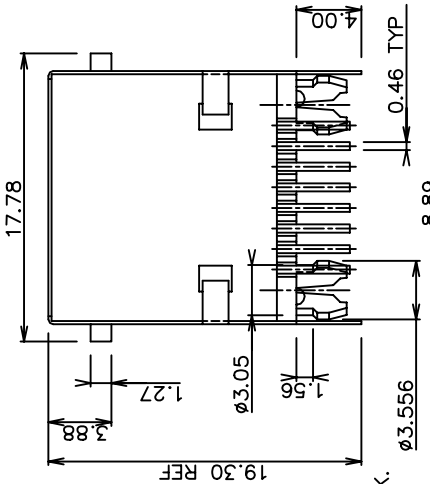
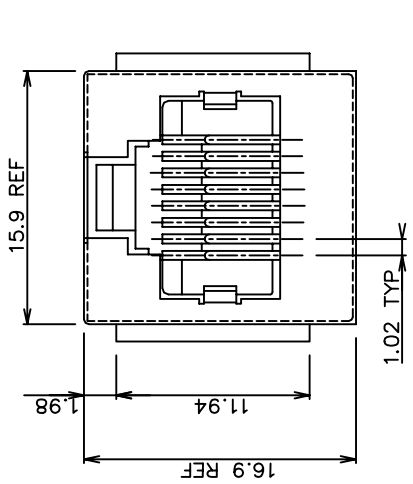


P/N	WIRE NUMBERS LOADED	PLATING
94152-088	ALL	30 u" G.X.T.
94152-088LF	ALL	6 u" GOLD



**RECOMMENDED PC BOARD LAYOUT**

- NOTES:**
1. RECOMMENDED P.C.B THICKNESS 1.60 MM
  2. HOUSING MAT'L: NYLON 66, 25% G.F UL 94V-0, BLACK.
  3. CONTACTS: PHOS BRONZE ALLOY UNS-C51000,  $\phi$  0.460 ROUND WIRE, PLATING SEE TABLE.
  4. METAL SHELL MATERIAL: COPPER ALLOY. 0.20mm THICK FINISH: FOR 94152-XXX TIN-LEAD 100u" THICK MIN. FOR 94152-XXXLF PURE TIN 80u" THICK MIN.
  5. PACKAGING: GES-14-351, USE TRAY
  6. ALL DIMENSIONS IN MILLIMETER.
  7. IF LF P/N THE PRODUCT MEETS EUROPEAN UNION DIRECTIVES AND OTHER COUNTRY REGULATIONS AS DESCRIBED IN GS-22-008.
  8. THE HOUSING WILL WITHSTAND EXPOSURE TO 260°C PEAK TEMPERATURE FOR 10 SECONDS IN A WAVE SOLDER APPLICATION WITH A 1.60mm MINIMUM THICK CIRCUIT BOARD.
  9. IF LF P/N PACKAGING MEETS GS-14-920 SPECIFICATION.



mat'l code		tolerance unless otherwise specified		CUSTOMER	
rev.	ecn no.	dr	date	COPY	www.fcconnect.com
A	T40135		05/19/94	projection	title
B	T50378	C	12/18/95	$\pm$ 0.25	8 POS VERT P.C.B. M/J ASSY SHIELDED
C	T03-0443	WL	10/06/03	$\pm$ 0.13	product family
D	N05-0030	YS	02/05/05	$\pm$ 0.05	unit
E	N06-0319	WG	12/28/06	$\pm$ 2°	mrm./inch size
				chr. TONY CHIEN	scale
				appr. JENN TSAO	3/1
					A3
sheet	revisor	E			94152
index	sheet	1			1 OF 1

Tous droits strictement reserves. Reproduction ou communication a des tiers int sans que lue forme que ce soit sans autorisation ecrite du proprietaire. Droits de reproduction FCI bv



All rights strictly reserved. Reproduction or issue to third parties in any form without written authority from the proprietor. Copyright FCI bv