

Coaxial

Power Splitter/Combiner

ZX10-4A-24+

4 Way-0° 50Ω

1675 to 2350 MHz

Maximum Ratings

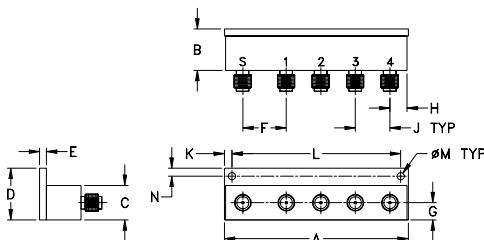
Operating Temperature	-40°C to 85°C
Storage Temperature	-55°C to 100°C
Power Input (as a splitter)	2.5W max.
Internal Dissipation	0.125W max.

Permanent damage may occur if any of these limits are exceeded.

Coaxial Connections

SUM PORT	S
PORT 1	1
PORT 2	2
PORT 3	3
PORT 4	4

Outline Drawing



Outline Dimensions (inch/mm)

A	B	C	D	E	F	G	H
2.67	.60	.50	.75	.10	.63	.25	.25
67.82	15.24	12.70	19.05	2.54	16.00	6.35	6.35
J	K	L	M	N			wt.
.50	.11	2.445	.106	.12			grams
12.70	2.79	62.10	2.69	3.05			65.0

Features

- low insertion loss, 0.8 dB typ.
- high isolation, 20 dB typ.
- rigid unibody construction
- convenient for panel mount applications
- low cost
- very small size
- protected by US patent 6,790,049

Applications

- antenna arrays
- signal distribution
- test bench

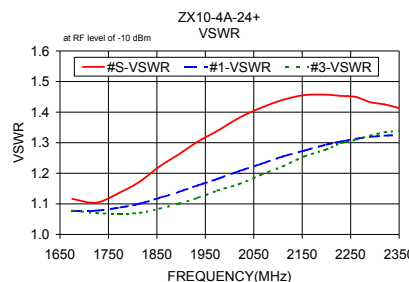
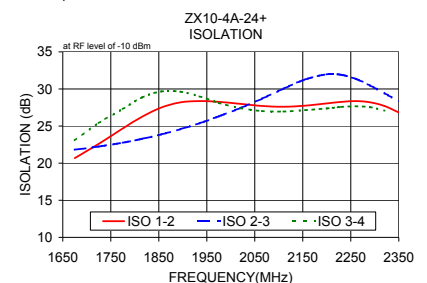
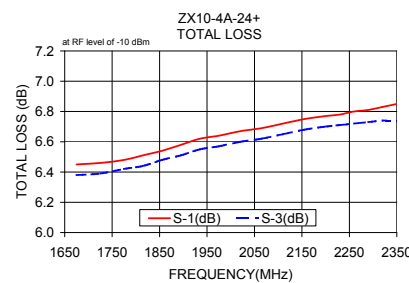
Electrical Specifications (T_{AMB}=25°C)

FREQ. RANGE (MHz)	ISOLATION (dB)		INSERTION LOSS (dB) ABOVE 6 dB		PHASE UNBALANCE (Deg.)	AMPLITUDE UNBALANCE (dB)	INPUT VSWR (:1)	OUTPUT VSWR (:1)
	Typ.	Min.	Typ.	Max.				
1675-2350	20	18	0.8	1.2	7.0	0.6	1.35	1.3
1775-2200	25	20	0.8	1.2	6.0	0.6	1.4	1.3

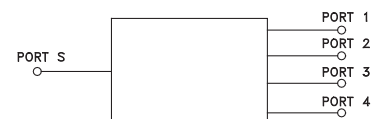
Typical Performance Data

Freq. (MHz)	Total Loss ¹ (dB)				Amp. Unbal. (dB)	Isolation (dB)			Phase Unbal. (deg.)	VSWR S	VSWR 1	VSWR 2	VSWR 3	VSWR 4
	S-1	S-2	S-3	S-4		1-2	2-3	3-4						
1675.00	6.45	6.67	6.38	6.38	0.30	20.68	21.82	20.97	1.04	1.12	1.08	1.12	1.08	1.11
1725.00	6.46	6.69	6.39	6.37	0.32	22.61	22.24	23.07	1.08	1.10	1.08	1.14	1.07	1.11
1775.00	6.48	6.71	6.42	6.39	0.33	24.68	22.76	25.41	1.24	1.14	1.09	1.12	1.07	1.12
1815.00	6.51	6.75	6.44	6.39	0.35	26.25	23.28	27.30	1.43	1.17	1.10	1.15	1.07	1.13
1855.00	6.54	6.78	6.48	6.42	0.37	27.50	23.87	28.85	1.58	1.22	1.12	1.15	1.08	1.14
1895.00	6.58	6.82	6.51	6.43	0.39	28.19	24.58	29.67	1.76	1.26	1.14	1.17	1.10	1.16
1935.00	6.62	6.86	6.55	6.45	0.41	28.37	25.39	29.62	1.88	1.30	1.16	1.19	1.12	1.18
1975.00	6.64	6.88	6.57	6.45	0.43	28.27	26.31	29.00	2.02	1.34	1.18	1.21	1.14	1.20
2020.00	6.67	6.89	6.60	6.46	0.43	27.99	27.43	28.11	2.14	1.38	1.21	1.23	1.16	1.22
2065.00	6.69	6.91	6.62	6.47	0.43	27.71	28.69	27.41	2.31	1.41	1.23	1.27	1.20	1.25
2110.00	6.72	6.92	6.65	6.49	0.43	27.61	30.04	27.03	2.52	1.44	1.26	1.27	1.22	1.28
2155.00	6.75	6.93	6.68	6.51	0.42	27.75	31.28	26.96	2.70	1.46	1.27	1.32	1.26	1.30
2200.00	6.77	6.93	6.70	6.51	0.42	28.05	31.98	27.15	2.86	1.46	1.29	1.31	1.28	1.32
2230.00	6.78	6.92	6.71	6.51	0.41	28.26	31.91	27.37	2.98	1.45	1.30	1.32	1.30	1.34
2260.00	6.80	6.92	6.72	6.52	0.40	28.37	31.37	27.58	3.14	1.45	1.31	1.36	1.31	1.35
2290.00	6.81	6.91	6.73	6.51	0.40	28.20	30.47	27.67	3.25	1.43	1.32	1.32	1.32	1.36
2320.00	6.83	6.90	6.74	6.51	0.38	27.71	29.43	27.55	3.34	1.43	1.32	1.36	1.33	1.37
2350.00	6.85	6.89	6.74	6.51	0.38	26.84	28.30	27.07	3.52	1.41	1.33	1.38	1.34	1.37

1. Total Loss = Insertion Loss + 6dB splitter loss.

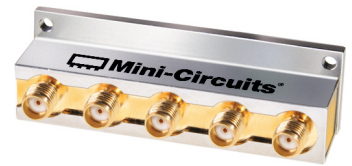


electrical schematic



Notes

- Performance and quality attributes and conditions not expressly stated in this specification document are intended to be excluded and do not form a part of this specification document.
- Electrical specifications and performance data contained in this specification document are based on Mini-Circuit's applicable established test performance criteria and measurement instructions.
- The parts covered by this specification document are subject to Mini-Circuits standard limited warranty and terms and conditions (collectively, "Standard Terms"); Purchasers of this part are entitled to the rights and benefits contained therein. For a full statement of the Standard Terms and the exclusive rights and remedies thereunder, please visit Mini-Circuits' website at www.minicircuits.com/WCLStore/terms.jsp



CASE STYLE: GY1065
Connectors Model
SMA ZX10-4A-24-S+

+RoHS Compliant
The +Suffix identifies RoHS Compliance. See our web site for RoHS Compliance methodologies and qualifications