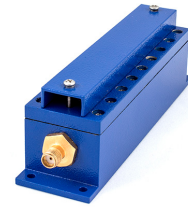


Cavity Bandpass Filter

ZVBP-4900+

50Ω 4840 to 4960 MHz



CASE STYLE: ME1656

The Big Deal

- Low insertion loss, 1.2 dB typical
- Good VSWR, 1.22:1 typical
- High rejection
- Fast roll-off
- Connectorized package

Product Overview

ZVBP-4900+ is a 50Ω cavity filter. Frequency band of this filter is used in Wi-Fi applications and telecommunications and broad band.

Key Features

| Feature | Advantages |
|---|--|
| Narrow band width | ZVBP-4900+ is narrow bandwidth filter. 2.45% band width |
| Good matching and low loss in pass band | This filter has good matching and low loss in the pass band |
| Connectorized package | Connectorized package is easy to interface with other devices and well suited for test setups. |

Notes

- A. Performance and quality attributes and conditions not expressly stated in this specification document are intended to be excluded and do not form a part of this specification document.
B. Electrical specifications and performance data contained in this specification document are based on Mini-Circuit's applicable established test performance criteria and measurement instructions.
C. The parts covered by this specification document are subject to Mini-Circuits standard limited warranty and terms and conditions (collectively, "Standard Terms"); Purchasers of this part are entitled to the rights and benefits contained therein. For a full statement of the Standard Terms and the exclusive rights and remedies thereunder, please visit Mini-Circuits' website at www.minicircuits.com/MCLStore/terms.jsp



Bandpass Filter

ZVBP-4900+

50Ω 4840 to 4960 MHz



CASE STYLE: ME1656
 Connectors SMA-F
 Model ZVBP-4900-S+

Features

- Low insertion loss, 1.2 dB typical
- Good VSWR, 1.22:1 typical
- High rejection
- Fast roll-off
- Connectorized package

Applications

- Wi-Fi application
- Telecommunications and broadband
- Transmitters and receivers

Electrical Specifications at 25°C

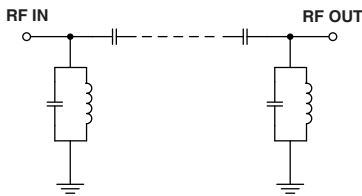
| Parameter | F# | Frequency (MHz) | Min. | Typ. | Max. | Unit | |
|------------------|------------------|-----------------|-----------|------|------|------|----|
| Pass Band | Center Frequency | - | - | 4900 | - | MHz | |
| | Insertion Loss | F1-F2 | 4840-4960 | - | 1.20 | 2.00 | dB |
| | VSWR | F1-F2 | 4840-4960 | - | 1.22 | 1.43 | :1 |
| Stop Band, Lower | Insertion Loss | DC-F3 | DC - 4670 | 20 | 29 | - | dB |
| | VSWR | DC-F3 | DC - 4670 | - | 20 | - | :1 |
| Stop Band, Upper | Insertion Loss | F4-F5 | 5100-9000 | 20 | 28 | - | dB |
| | VSWR | F4-F5 | 5100-9000 | - | 20 | - | :1 |

Maximum Ratings

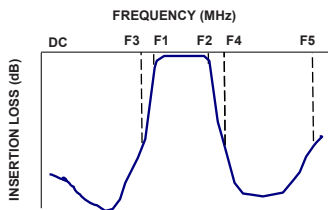
| | |
|-----------------------|----------------|
| Operating Temperature | -40°C to 85°C |
| Storage Temperature | -55°C to 100°C |
| RF Power Input | 10 W max. |

Permanent damage may occur if any of these limits are exceeded.

Functional Schematic



Typical Frequency Response

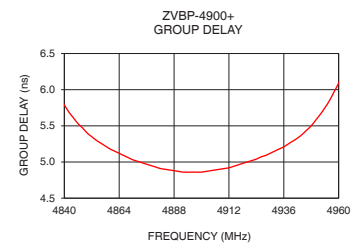
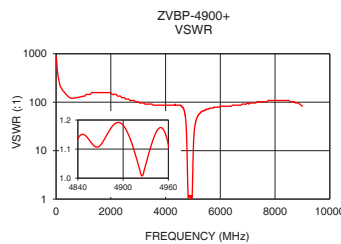
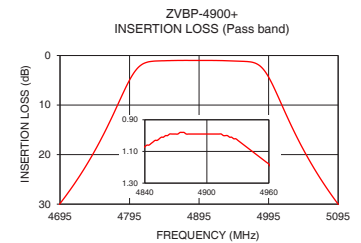
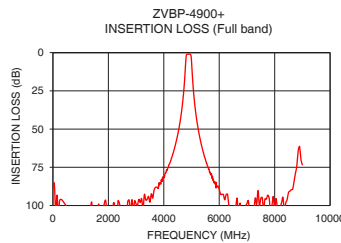


Typical Performance Data at 25°C

| Frequency (MHz) | Insertion Loss (dB) | VSWR (:1) | Frequency (MHz) | Group Delay (nsec) |
|-----------------|---------------------|-----------|-----------------|--------------------|
| 10 | 88.58 | 868.59 | 4840 | 5.79 |
| 500 | 101.01 | 124.09 | 4846 | 5.53 |
| 2000 | 102.54 | 157.93 | 4852 | 5.35 |
| 4400 | 61.56 | 86.86 | 4858 | 5.22 |
| 4670 | 34.13 | 69.49 | 4864 | 5.12 |
| 4690 | 30.78 | 64.35 | 4870 | 5.03 |
| 4740 | 20.47 | 40.41 | 4876 | 4.97 |
| 4776 | 10.54 | 14.62 | 4882 | 4.91 |
| 4802 | 3.34 | 3.25 | 4888 | 4.88 |
| 4840 | 1.07 | 1.13 | 4894 | 4.86 |
| 4900 | 0.99 | 1.18 | 4900 | 4.86 |
| 4960 | 1.18 | 1.12 | 4912 | 4.92 |
| 4990 | 3.24 | 2.84 | 4918 | 4.98 |
| 5006 | 7.47 | 7.25 | 4924 | 5.04 |
| 5030 | 14.85 | 17.93 | 4930 | 5.12 |
| 5050 | 20.26 | 25.94 | 4936 | 5.21 |
| 5096 | 30.18 | 38.61 | 4942 | 5.33 |
| 5100 | 30.92 | 39.49 | 4948 | 5.50 |
| 7500 | 95.27 | 102.19 | 4954 | 5.75 |
| 9000 | 73.32 | 82.73 | 4960 | 6.09 |

+RoHS Compliant

The +Suffix identifies RoHS Compliance. See our web site for RoHS Compliance methodologies and qualifications



Notes

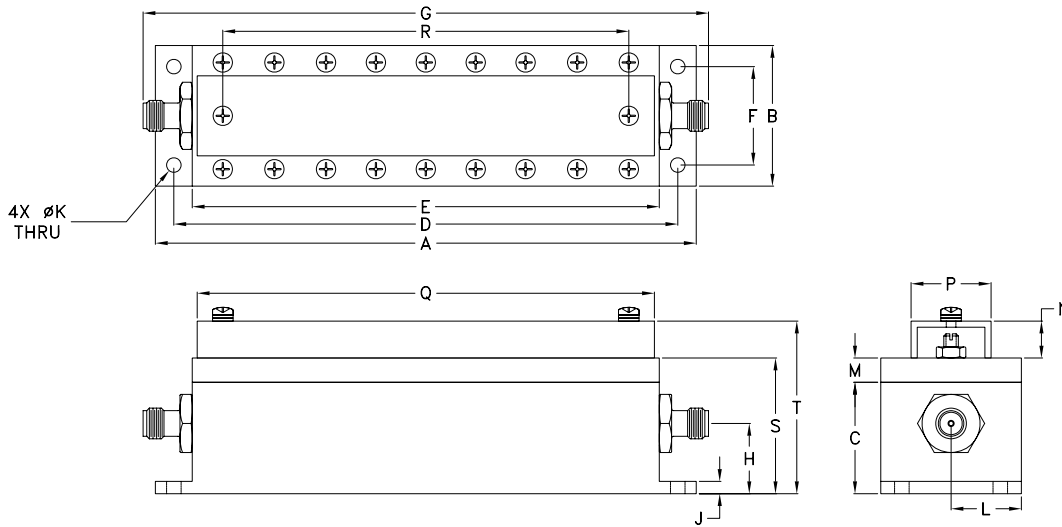
- Performance and quality attributes and conditions not expressly stated in this specification document are intended to be excluded and do not form a part of this specification document.
- Electrical specifications and performance data contained in this specification document are based on Mini-Circuit's applicable established test performance criteria and measurement instructions.
- The parts covered by this specification document are subject to Mini-Circuits standard limited warranty and terms and conditions (collectively, "Standard Terms"); Purchasers of this part are entitled to the rights and benefits contained therein. For a full statement of the Standard Terms and the exclusive rights and remedies thereunder, please visit Mini-Circuits' website at www.minicircuits.com/MCLStore/terms.jsp



Coaxial Connections

| | |
|--------|------------|
| INPUT | SMA-FEMALE |
| OUTPUT | SMA-FEMALE |

Outline Drawing



Outline Dimensions (inch / mm)

| | | | | | | | | | |
|--------------|--------------|-------------|--------------|--------------|--------------|--------------|--------------|-------------|-------------|
| A | B | C | D | E | F | G | H | J | K |
| 4.396 | 1.143 | .906 | 4.096 | 3.796 | .800 | 4.596 | .571 | .100 | .118 |
| 111.66 | 29.03 | 23.01 | 104.04 | 96.42 | 20.32 | 116.74 | 14.50 | 2.54 | 3.00 |
| L | M | N | P | Q | R | S | T | | Wt. |
| .572 | .197 | .300 | .650 | 3.716 | 3.300 | 1.103 | 1.403 | | grams |
| 14.53 | 5.00 | 7.62 | 16.51 | 94.39 | 83.82 | 28.02 | 35.64 | | 160 |

Notes

- A. Performance and quality attributes and conditions not expressly stated in this specification document are intended to be excluded and do not form a part of this specification document.
- B. Electrical specifications and performance data contained in this specification document are based on Mini-Circuit's applicable established test performance criteria and measurement instructions.
- C. The parts covered by this specification document are subject to Mini-Circuits standard limited warranty and terms and conditions (collectively, "Standard Terms"); Purchasers of this part are entitled to the rights and benefits contained therein. For a full statement of the Standard Terms and the exclusive rights and remedies thereunder, please visit Mini-Circuits' website at www.minicircuits.com/MCLStore/terms.jsp

