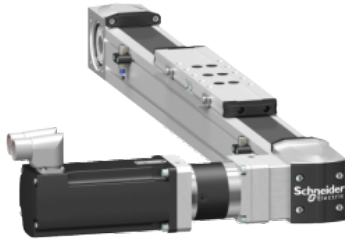


# Product data sheet

Specifications



Portal axis, Lexium PAS, model range 4, profile size 40 x 40 mm, toothed belt, roller guide

PAS41BR

## Main

Range of product	Lexium PAS
Product or component type	Portal axis
Product specific application	For 1 direction
Load position	On carriage
Drive type	Toothed belt
Type of guide	Roller

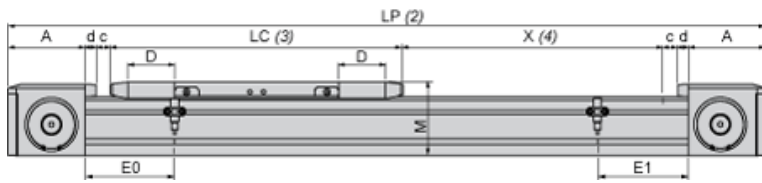
## Complementary

Operating position	Horizontal
Function available	Different type of guides Different types of sensors for the limit switch function Different carriage lengths adapted to the load Additional carriages option Increased corrosion resistance Anti-static toothed belt Protective cover strip for the axis inner parts Motor and gearbox mounting options
Operating force	300 N for Fx 660 N for Fy 430 N for Fz
Maximum speed	26.25 ft/s (8 m/s)
Maximum acceleration	65.62 ft/s <sup>2</sup> (20 m/s <sup>2</sup> )
Max. drive torque	35.40 lbf.in (4 N.m)
Max. torque	<44.25 lbf.in (5 N.m) for Mx <97.36 lbf.in (11 N.m) for My carriage type 2 <247.82 lbf.in (28 N.m) for My carriage type 4 <150.46 lbf.in (17 N.m) for Mz carriage type 2 <380.58 lbf.in (43 N.m) for Mz carriage type 4
Min. ... Max. stroke	4.92...118.11 in (125...3000 mm)
Repeat accuracy	+/- 0.05 mm
Profile dimension	40 x 55 mm
Service life	30000 km

## Contractual warranty

Warranty	18 months
----------	-----------

**Size Characteristics**



- (2) LP : total length of axis
- (3) LC : length of carriage
- (4) X : Stroke, depending on application

		Without protective metal strip	With protective metal strip
A	mm	53.5	53.5
	in.	2.11	2.11
c	mm	10	10
	in.	0.39	0.39
d	mm	–	9
	in.	–	0.35
D	mm	–	48.5
	in.	–	1.91
LP	mm	= 127 + LC + X	= 145 + LC + X
	in.	= 5.00 + LC + X	= 5.71 + LC + X
M	mm	55	55
	in.	2.16	2.16

**Carriage type 2**

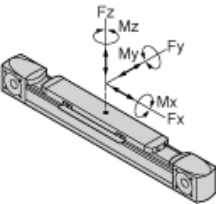
		Without protective metal strip	With protective metal strip
E0	mm	25	82
	in.	0.98	3.23
E1	mm	25	82
	in.	0.98	3.23
LC	mm	200	297
	in.	7.87	11.69

**Carriage type 4**

		Without protective metal strip	With protective metal strip
E0	mm	25	82
	in.	0.98	3.23
E1	mm	105	162
	in.	4.13	6.38
LC	mm	280	377
	in.	11.02	14.84

**Forces and Torques Exerted on the Lexium PAS B Portal Axis**

---



**Types of Interface for the Drive Element**

---

**Drive Element Fixed on Right-Hand Side**



**Drive Element Fixed on Left-Hand Side**



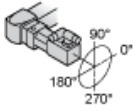
**Without Connection / Without Adaptor Plate**



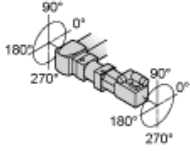
**Possible Motor Drive Configurations and Orientations**

---

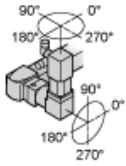
**Motor Only Without Gearbox**



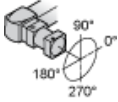
**Motor With Planetary Gearbox**



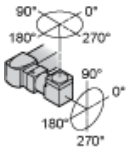
**Motor With Angular Planetary Gearbox**



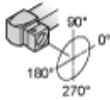
**Planetary Gearbox Only**



**Angular Planetary Gearbox Only**



**Without Motor, Without Gearbox, With Adaptor Plate for the Drive Element**



**Without Motor, Without Gearbox**

