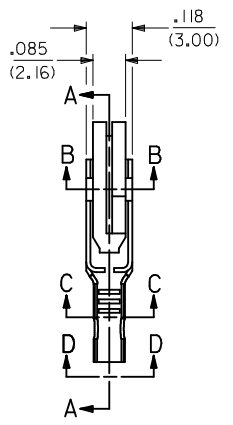
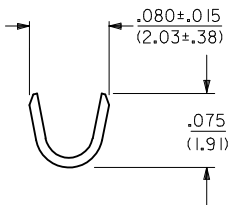
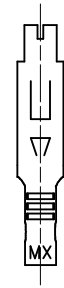
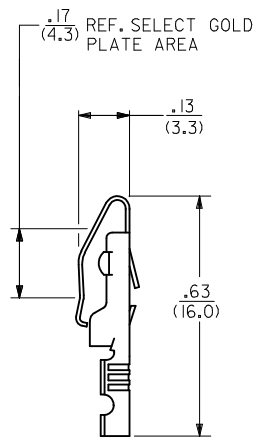


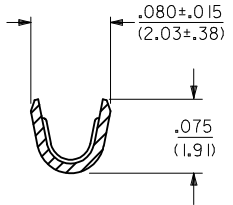
SECTION A-A



SECTION C-C



VIEW D-D



LEGEND

4573-***
 FORM
 BLANK=CHAIN
 L=LOOSE
 PLATING
 (PER SDES-88)

- NOTES:
 1) MATERIAL: BRASS. ALLOY C260. .010/(0.25) THICK.
 2) FINISH:
 (P909) * : OVERALL HOT TIN DIP: .000100/(0.00254) MIN.
 (P555) : SELECT GOLD: .000015/(0.00038) MIN.
 OVERALL NICKEL: .000030/(0.00076) MIN.
 (P228) : SELECT GOLD: .000030/(0.00076) MIN.
 SELECT TIN: .000100/(0.00254) MIN.
 OVERALL NICKEL UNDERPLATE .000050/(0.00127) MIN.
 * THE PRIMARY SHIPPING CARTON WILL BE LABELED "COMPLIANT TO
 RoHS DIRECTIVE 2002/95/EC AND ELV ANNEX II OF DIRECTIVE 2000/53/EC".
 CARTONS WITHOUT THIS LABEL MAY CONTAIN PRODUCT WITH TIN/LEAD PLATING.

- 3) PRODUCT SPECIFICATION: PS-09-50 APPLIES.
 4) TERMINAL FOR USE WITH 24-30 AWG WIRE.

CHANGE P/N'S EC NO: UCP2009-1522 DRAWN:KIPPER 2008/12/15 CHKD:SSOUSEK 2008/12/18 APPR:FSMITH 2008/12/22	DESCRIPTION	QUALITY SYMBOLS	GENERAL TOLERANCES (UNLESS SPECIFIED)		DIMENSION STYLE		SCALE	DESIGN UNITS	THIRD ANGLE PROJECTION	
		▼=0 ▽=0	mm	INCH	IN/MM		1:1	INCH		
REV F2			4 PLACES ± ---	± ---	DRAWN BY	DATE	TITLE TERMINAL CRIMP ON			
			3 PLACES ± ---	± .010	CHECKED BY	DATE				
			2 PLACES ± 0.25	± .014	PATEL 08/15/91		MOLEX INCORPORATED			
			1 PLACE ± 0.36	± ---	APPROVED BY LENZ 08/15/91					
			ANGULAR ±1/2°		MATERIAL NO.		DOCUMENT NO.		SHEET NO.	
			DRAFT WHERE APPLICABLE MUST REMAIN WITHIN DIMENSIONS		SEE CHART		SD-4573		1 OF 2	
THIS DRAWING CONTAINS INFORMATION THAT IS PROPRIETARY TO MOLEX INCORPORATED AND SHOULD NOT BE USED WITHOUT WRITTEN PERMISSION										

PART NO.	ENG. NO.	PART NO.	ENG. NO.	PART NO.	ENG. NO.	PART NO.	ENG. NO.
08-03-0305	4573-P909						
08-03-0306	4573-P909L						
08-05-0303	4573-P555						
08-05-0304	4573-P555L						
50-36-2431	4573-P228						
50-36-2432	4573-P228L						

COLUMN NO. 1 CON'T. IN COLUMN NO. SHEET NO. COLUMN NO. 2 CON'T. IN COLUMN NO. SHEET NO. COLUMN NO. 3 CON'T. IN COLUMN NO. SHEET NO. COLUMN NO. 4 CON'T. IN COLUMN NO. SHEET NO.

CHANGE P/N'S EC NO: UCP2009-1522 DRAWN: KIPPER 2008/12/15 CHKD: SSOUSEK 2008/12/18 APPR: FSM LTH 2008/12/22	QUALITY SYMBOLS ▽=0 ▽=0	GENERAL TOLERANCES (UNLESS SPECIFIED) 4 PLACES ± --- ± --- 3 PLACES ± --- ± .010 2 PLACES ± 0.25 ± .014 1 PLACE ± 0.35 ± --- ANGULAR ± 1/2°	DIMENSION STYLE IN/MM DRAWN BY: ROBERTS CHECKED BY: PATEL APPROVED BY: LENZ	SCALE: 1:1 DESIGN UNITS: INCH THIRD ANGLE PROJECTION	DATE: 08/26/91 DATE: 08/26/91 DATE: 08/26/91	TITLE: TERMINAL CANTILEVER STRAIGHT-ON CRIMP TYPE
		DRAFT WHERE APPLICABLE MUST REMAIN WITHIN DIMENSIONS	MATERIAL NO. SEE CHART	MOLEX INCORPORATED	SHEET NO. 2 OF 2	
		SIZE C THIS DRAWING CONTAINS INFORMATION THAT IS PROPRIETARY TO MOLEX INCORPORATED AND SHOULD NOT BE USED WITHOUT WRITTEN PERMISSION	DOCUMENT NO. SD-4573	MOLEX		