

Specifications

| | |
|------------------------|----------------|
| Insulation Resistance: | 2,000MΩ min. |
| Current Rating: | 1.5A |
| Voltage Rating: | 250V AC rms |
| Withstanding Voltage: | 500V |
| Contact Resistance: | 20mΩ max. |
| Operating Temp Range: | -55°C to +85°C |
| Soldering Temp. | 230°C / 3 sec. |

Materials and Finish

| | |
|-------------------|------------------------------------|
| Housing: | High temp. Thermoplastic (UL94V-0) |
| Contacts: | Phosphor Bronze 0.30μm Au over Ni |
| Solder Area: | Tin over Ni |
| Shell: | Zink Alloy, Ni Plated |
| Metal Board Lock: | Zink Alloy, Tin Plated |



Part Number (Details)

DVIS 0**T - 002 - B S *

Series (Socket)

Number of Leads

24 (Digital)

29 (Integrated)

Terminal Type: 90° Solder Dip

Mating Face Contacts - Au (0.3μm min.) over Ni

Solder Terminals - Tin over Ni

Tapping Dimensions:

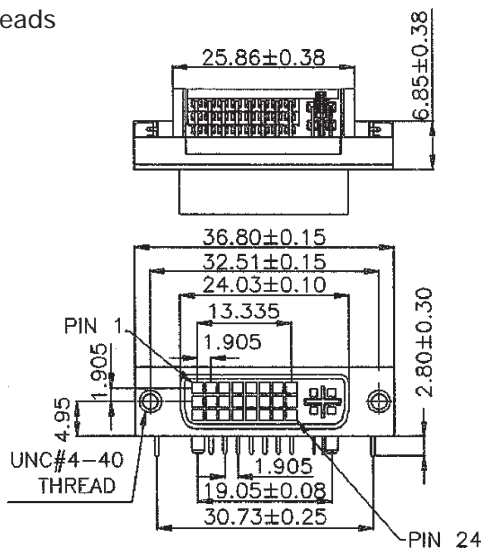
No mark = Thread Rivet UNC 4-40

1= Hex. Nut UNC 4-40



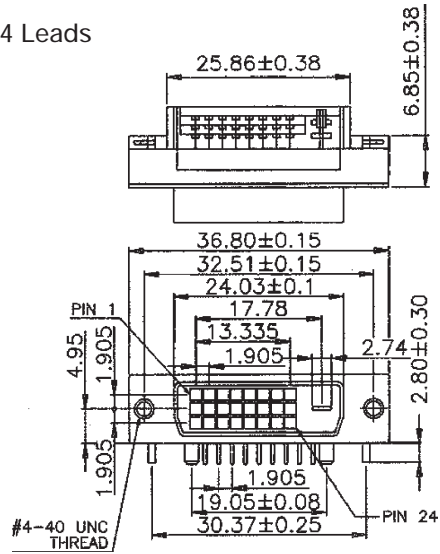
Outline Socket Dimensions (Intergrated)

29 Leads

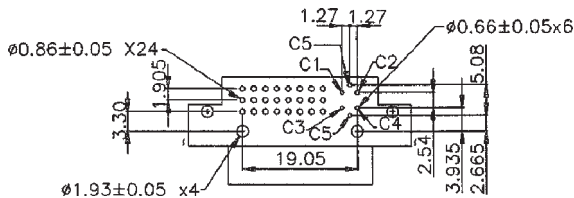


Outline Socket Dimensions (Digital)

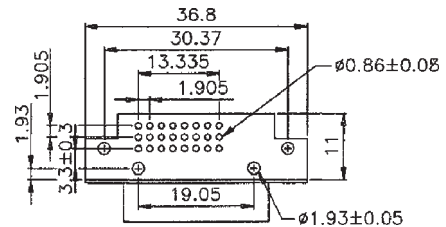
24 Leads



PCB Layout (29 Leads)



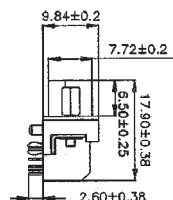
PCB Layout (24 Leads)



Tapping Types

DVIS0**T-002-BS

Thread Rivet UNC 4-40



DVIS0**T-002-BS1

Hex. Nut UNC 4-40

