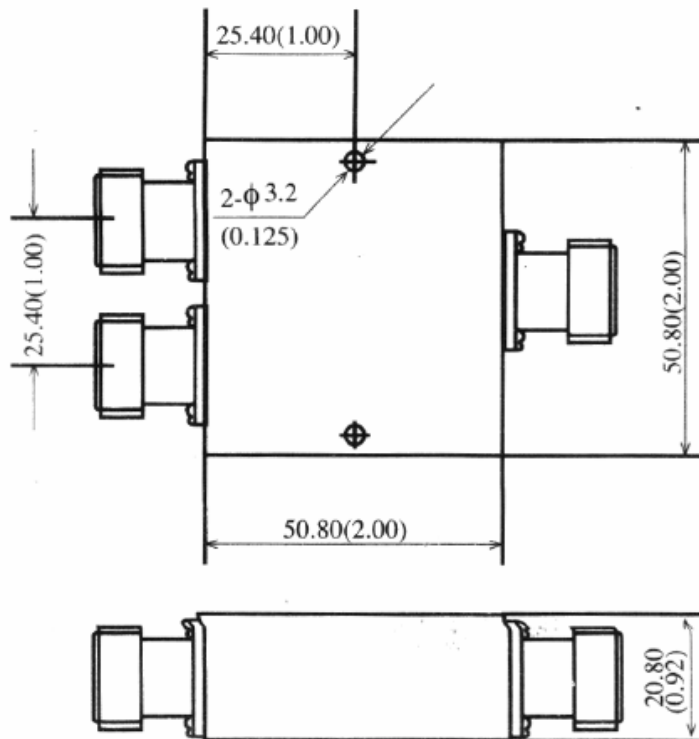


2-Way Power Divider

P/N: JXWBGF-T-2-2300-5300

Frequency Range(GHz)	2.3-5.3
Insertion Loss(dB)	0.8 max
Isolation(dB)	20 min
Phase Unbalance(°)	6 max
Amplitude Unbalance(dB)	0.4 max
VSWR	1.3:1 max
Connector	N-Female
Operating Temperature(°C)	-40 ~ +80
Storage Temperature(°C)	-55 ~ +85

Outline Drawing (Size: mm)



For current data sheets, please contact: sales@aacix.com