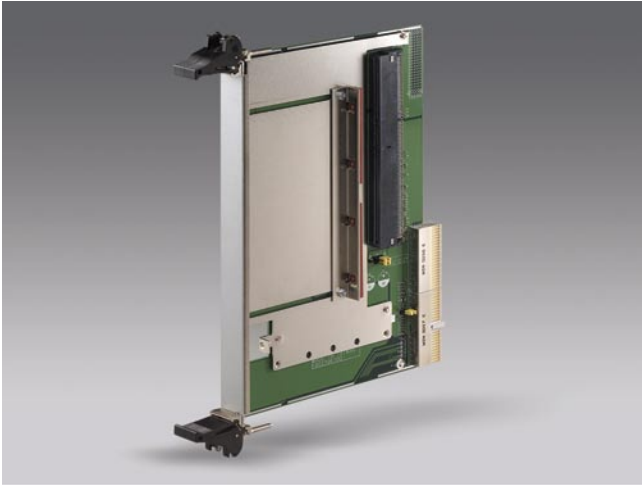


MIC-3961

6U CompactPCI® PCI Carrier Board



CD-ROM is not included



Features

- 64-bit PCI interface
- 5 V only
- 33/66 MHz PCI clock selectable
- Hold-down bracket to secure PCI board

Introduction

The MIC-3961 is a 6U CompactPCI® PCI carrier board that allows users to attach a 32/64-bit PCI card via a J1/J2 connector to a CompactPCI platform. The hold-down bracket secures the PCI card onto the carrier board and protects it against vibration and shock. In addition, the bracket allows a cable to be routed through the front slot panel.

Specifications

Bus	PCI	32-bit/33 MHz, 64-bit/66 MHz	
Power	Power Consumption	1 W @ 33 MHz	
Environment		Operating	Non-Operating
	Temperature	0 ~ 60° C (32 ~ 140° F)	-20 ~ 80° C (-4 ~ 176° F)
	Humidity	-	5 ~ 95 % @ 60° C, non-condensing
	Vibration (5 ~ 500 Hz)	1.0 Grms	2.0 G
Physical Characteristics	Dimensions (W x D)	233.35 x 160 mm (9.2" x 6.3"), 1-slot width	
	Weight	0.6 kg (1.32 lb)	
Reliability	Mean-Time-To-Repair (MTTR)	5 minutes	
Compliance	PICMG 2.0 R3.0 CompactPCI Specification		

Recommended Configurations

PCI Carrier Board	Enclosure
MIC-3961-AE	MIC-3039-B, MIC-3056, MIC-3041, MIC-3042, MIC-3043, MIC-3081B, CP-150 series

Note:

1. Because of the PCI slot form factor, it can not support 3.3 V PCI card

Ordering Information

Part Number	Description
MIC-3961-AE	6U CompactPCI PCI carrier board

Note: Please contact your sales distributor for the optional internal-to-panel cable adaptation assembly set

