

Housing - HC-B 10-KMQ-H-O1M25 - 1460296

Please be informed that the data shown in this PDF Document is generated from our Online Catalog. Please find the complete data in the user's documentation. Our General Terms of Use for Downloads are valid (<http://download.phoenixcontact.com>)



HEAVYCON B10 coupling housing, with double locking latch, height: 77.5 mm, with 1 x M25 gland, straight cable outlet



Key commercial data

Packing unit	1 pc
Custom tariff number	85389099
Country of origin	Germany

Technical data

Dimensions

Height	77.5 mm
Width	43 mm
Length	73 mm

Ambient conditions

Ambient temperature (operation)	-40 °C ... 125 °C
---------------------------------	-------------------

General

Note	For contact inserts HC-B10, BB18, DD42, M, K8/24
Design	B10
Housing type	Coupling housings
Locking type	With double locking latch
No. of cable exits	1
Cable exit	Straight
Screw connection	None
Type of the screw connection	1x M25
Housing material	Aluminum die-cast
Housing surface material	Powder-coated, gray

Housing - HC-B 10-KMQ-H-O1M25 - 1460296

Technical data

General

Seal material	NBR
Material lock	Stainless steel, handle: PA
Material grip body interlock	PA
Assembly instructions	For half and full screw connections

Classifications

eCl@ss

eCl@ss 4.0	27140816
eCl@ss 4.1	27140816
eCl@ss 5.0	27143424
eCl@ss 5.1	27143424
eCl@ss 6.0	27143424
eCl@ss 7.0	27440209
eCl@ss 8.0	27440209

ETIM

ETIM 3.0	EC000437
ETIM 4.0	EC000437
ETIM 5.0	EC000437

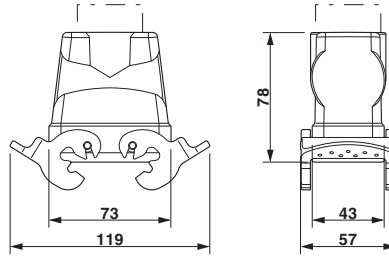
UNSPSC

UNSPSC 6.01	31261502
UNSPSC 7.0901	31261502
UNSPSC 11	31261502
UNSPSC 12.01	31261502
UNSPSC 13.2	31261502

Drawings

Housing - HC-B 10-KMQ-H-O1M25 - 1460296

Dimensioned drawing



Dimensional drawing