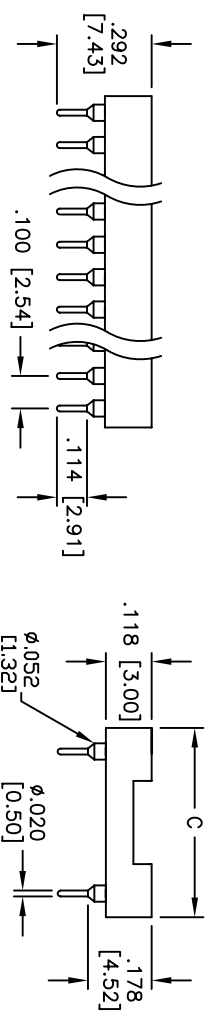
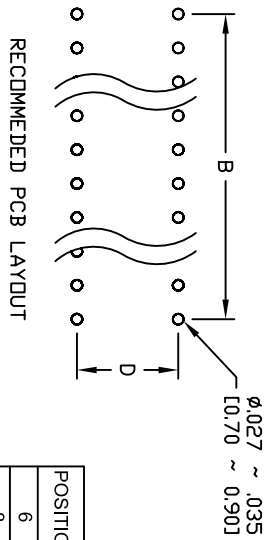
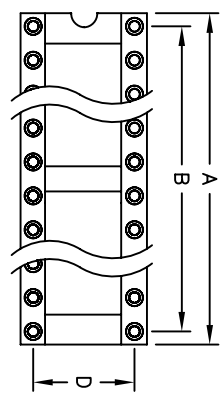


APPROVED: _____
 DATE: _____ TITLE: _____



POSITION	A		B		C		D	
	INCHES	[MM]	INCHES	[MM]	INCHES	[MM]	INCHES	[MM]
6	.300	[7.62]	.200	[5.08]				
8	.400	[10.16]	.300	[7.62]				
10	.500	[12.70]	.400	[10.16]				
14	.700	[17.78]	.600	[15.24]				
16	.800	[20.32]	.700	[17.78]	.400	[10.16]	.300	[7.62]
18	.900	[22.86]	.800	[20.32]				
20	1.00	[25.40]	.900	[22.86]				
24	1.20	[30.48]	1.10	[27.94]				
28	1.40	[35.56]	1.30	[33.02]				
32	1.60	[40.64]	1.50	[38.10]				
24	1.20	[30.48]	1.10	[27.94]				
28	1.40	[35.56]	1.30	[33.02]				
32	1.60	[40.64]	1.50	[38.10]				
36	1.80	[45.72]	1.70	[43.18]				
40	2.00	[50.80]	1.90	[48.26]				
42	2.10	[53.34]	1.90	[48.26]	.700	[17.78]	.600	[15.24]
48	2.40	[60.96]	2.30	[58.42]				
50	2.50	[63.50]	2.40	[60.96]				
52	2.60	[66.04]	2.50	[63.50]				
52	2.60	[66.04]	2.50	[63.50]	1.00	[25.40]	.900	[22.86]

SPECIFICATIONS:
 Material: Glass filled thermoplastic polyester, rated UL 94V-0
 Insulator color: Black
 Contacts: Phosphor Bronze
 Plating: Gold over Nickel underplate on inner contacts and Tin over Copper underplate on outer sleeve
 Electrical:
 Operating voltage: 250 VAC max
 Current rating: 3 Amps max
 Contact resistance: 4 mohms max
 Insulation resistance: 10000M Mohms min @ 500 VDC
 Dielectric withstanding voltage: 500 VAC for 1 minute
 Temperature Rating: Operating temperature: -40°C to +105°C
 Environmental:
 Lead free, RoHS compliant.
 Recommended soldering temp: 235°C for 5 sec.



UNLESS OTHERWISE SPECIFIED ALL DIMENSIONS ARE IN INCHES [MM]	
TOLERANCES: EXCEPT AS NOTED	
INCHES	HOLES
.X ± .10	ØX ± .10
.XX ± .020	ØXXX ± .015
.XXX ± .015	ØXXXX ± .010
APPROVALS	DATE
DRAWN	SS 11/8/04
CHECKED	
APPROVED	

ADAM TECH
 909 Rahway Avenue, Union, NJ 07083
 Phone: 908-687-5000 Fax: 908-687-5710

TITLE: SCREW MACHINE IC SOCKET

SIZE: X PART NO.: ICM-XXX-1-GT
 REF: SCALE: NTS SHEET 1 OF 1

Rev	AWO #	Description	Date	Appr
-		RELEASED	11/8/04	
-		REVISED & REDRAWN	12/13/07	