

NOTES: UNLESS OTHERWISE SPECIFIED

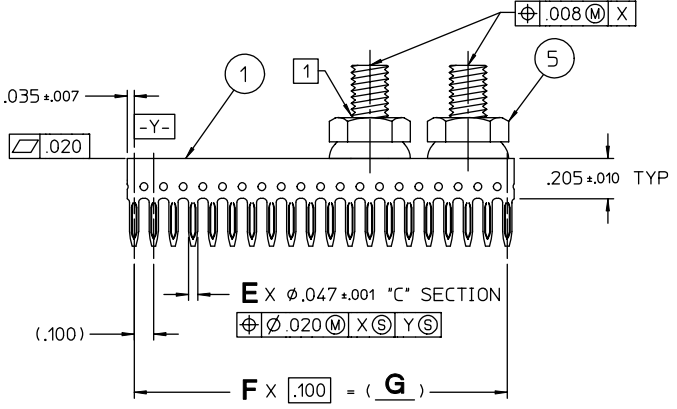
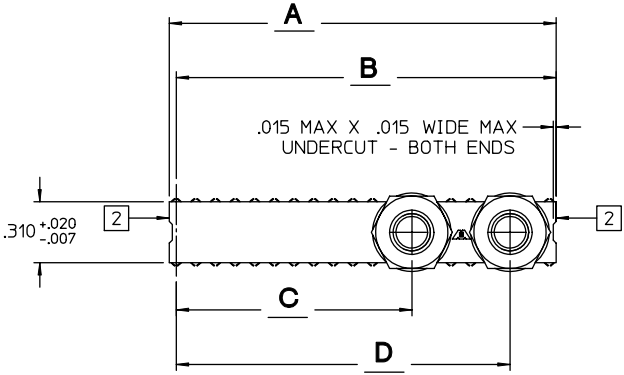
- 1 FASTENER & THREAD TO WITHSTAND 14 IN-LBS MIN. TORQUE, APPLIED WITH A STANDARD #10-32 UNC-2B NUT, AND THE FASTENER TO WITHSTAND A PUSH-OUT FORCE OF 100 LBS. MIN.
- 2 NO PLATING ON EDGES SHOWN.
- 3 FOR HOLE REQUIREMENT REQUEST WED DWG. 27331.
- 4 CUSTOMER TOOLING: INSERTION TOOL No. 107-43939-01.

SPECIFICATIONS

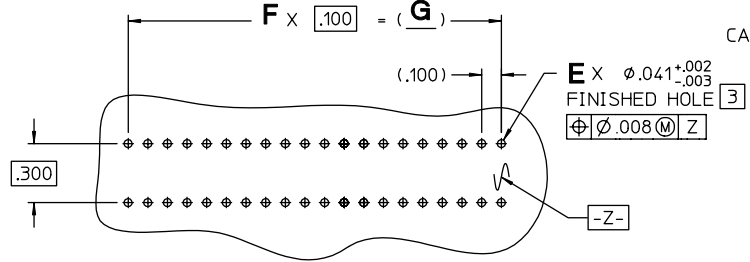
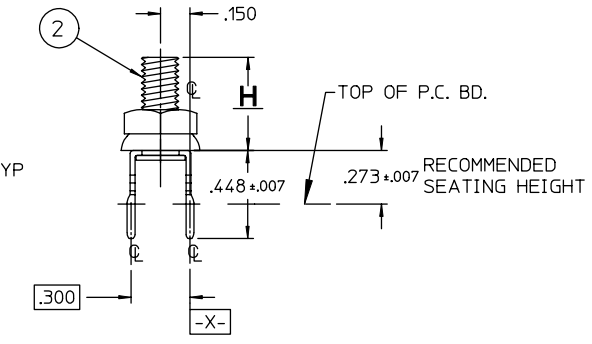
MATERIALS

- 1 Power Buss ——— Material: Copper Alloy #725
Finish: SEE CHART Except per 2
- 2 #10-32 Stud ——— Material: Steel
Finish: Zinc Plated
- 3 #10 External Tooth Washer ——— Material: Steel
Finish: Zinc Plated
- 4 #10-32 Hex Machine Screw Nut ——— Material: Steel
Finish: Zinc Plated
- 5 #10-32 KEPS Nut ——— Material: Steel
Finish: Zinc Plated
- 6 M5 Hex Machine Screw Nut ——— Material: Steel
Finish: Zinc Plated
- 7 M5 Stud ——— Material: Steel
Finish: Zinc Plated

REV	DESCRIPTION	BY DATE	APPD
J	REVISED PER ECR8605	CNR 06/30/05	V.B.H.

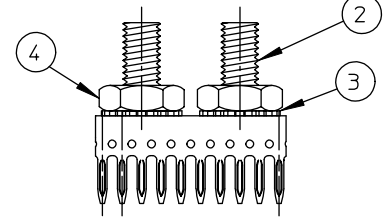


CATALOG No. 121-29293-02 SHOWN
CATALOG No. 121-29293-01 SAME EXCEPT NO HARDWARE

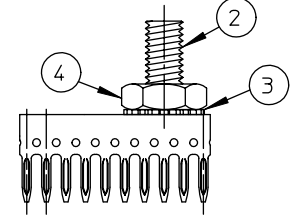


RECOMMENDED P.C. BOARD HOLE PATTERN

CATALOG No.	DESCRIPTION	A	B	C	D	E	F	G	H	PLATING
121-29293-07	SAME AS 121-29293-03 EXCEPT (2) $\phi .188$ THRU HOLES INSTEAD OF #10 STUDS & HARDWARE									TIN LEAD
121-29293-05	40 AMP DUAL 10 W/1 M5 STUD & HARDWARE	.970	.935	—	.700	20	9	.900	.447	TIN LEAD
121-29293-04	40 AMP DUAL 10 W/1 #10 STUD & HARDWARE									PURE TIN (RoHS)
121-29293-03	40 AMP DUAL 10 W/#10 STUDS & HARDWARE	.970	.935	.200	.700	20	9	.900	.475	TIN LEAD
121-29293-02-260	80 AMP DUAL 20 W/#10 STUDS & KEPS NUTS									PURE TIN (RoHS)
121-29293-02	80 AMP DUAL 20 W/#10 STUDS & KEPS NUTS	1.970	1.935	1.200	1.700	40	19	1.900		TIN LEAD
121-29293-01-260	80 AMP DUAL 20 W/#10 STUDS									PURE TIN (RoHS)
121-29293-01	80 AMP DUAL 20 W/#10 STUDS									TIN LEAD



CATALOG No. 121-29293-03 SHOWN
CATALOG No. 121-29293-07 SAME EXCEPT NO STUDS AND HARDWARE



CATALOG No. 121-29293-04 SHOWN
CATALOG No. 121-29293-05 SAME EXCEPT M5 STUD (ITEM 7) AND M5 NUT (ITEM 6)

PER ANSI Y14.5M-1982 UNLESS OTHERWISE SPECIFIED: DIMENSIONS ARE IN INCHES OR INCHES / MM		Litton Winchester Electronics 400 PARK ROAD WATERTOWN, CONNECTICUT 06795	
TOLERANCES DECIMALS .XX ± .01 XXX ± .005 ANGLES ± 5°		SCALE: 1:1	
CUSTOMER DRAWING		TITLE POWER BUSS STRIPS .100 X .300 GRID	
DRAWN L.A.W. 3-18-98	DATE CHECKED WPM 06/04/98	DATE APPROVED S.D. 06/04/98	REV. J
A		29293	SHT. 1 OF 1

June 2006 - This drawing became the property of Winchester Electronics Corporation, Wallingford, CT.