

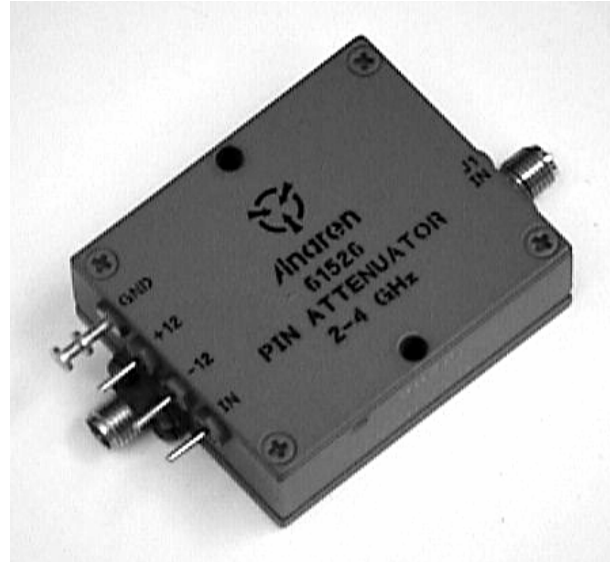
Attenuators PIN Diode

Applications

- Load Sensing Devices
- Precision Attenuation Controllers
- Instrumentation

Features

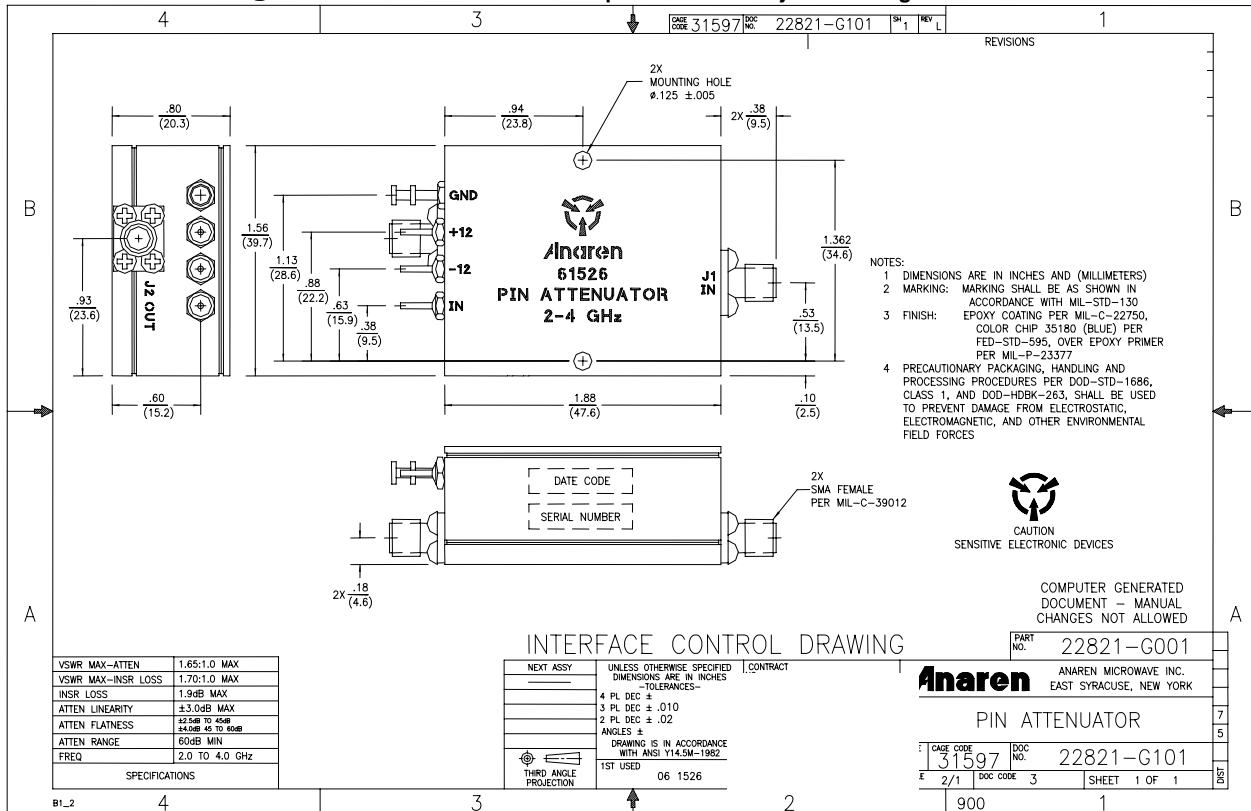
- Military Grade
- 2.0 – 4.0 GHz
- Low VSWR
- Flat Response
- Supply Voltages: +12V @ 120mA, -12V @ 40mA
- Control Voltage 0 to 10 volts (6dB/Volt) Typical
- Connectors Per MIL-C-39012
- Meets MIL-E-5400 Class 3 Requirements



NOTES: Model has 10,000 ohm drive impedance and 100 kHz drive bandwidth. Flatness Specified to 45 dB, add +/- 1.5dB to 60 dB.

Electrical and Mechanical Specifications subject to change without notice

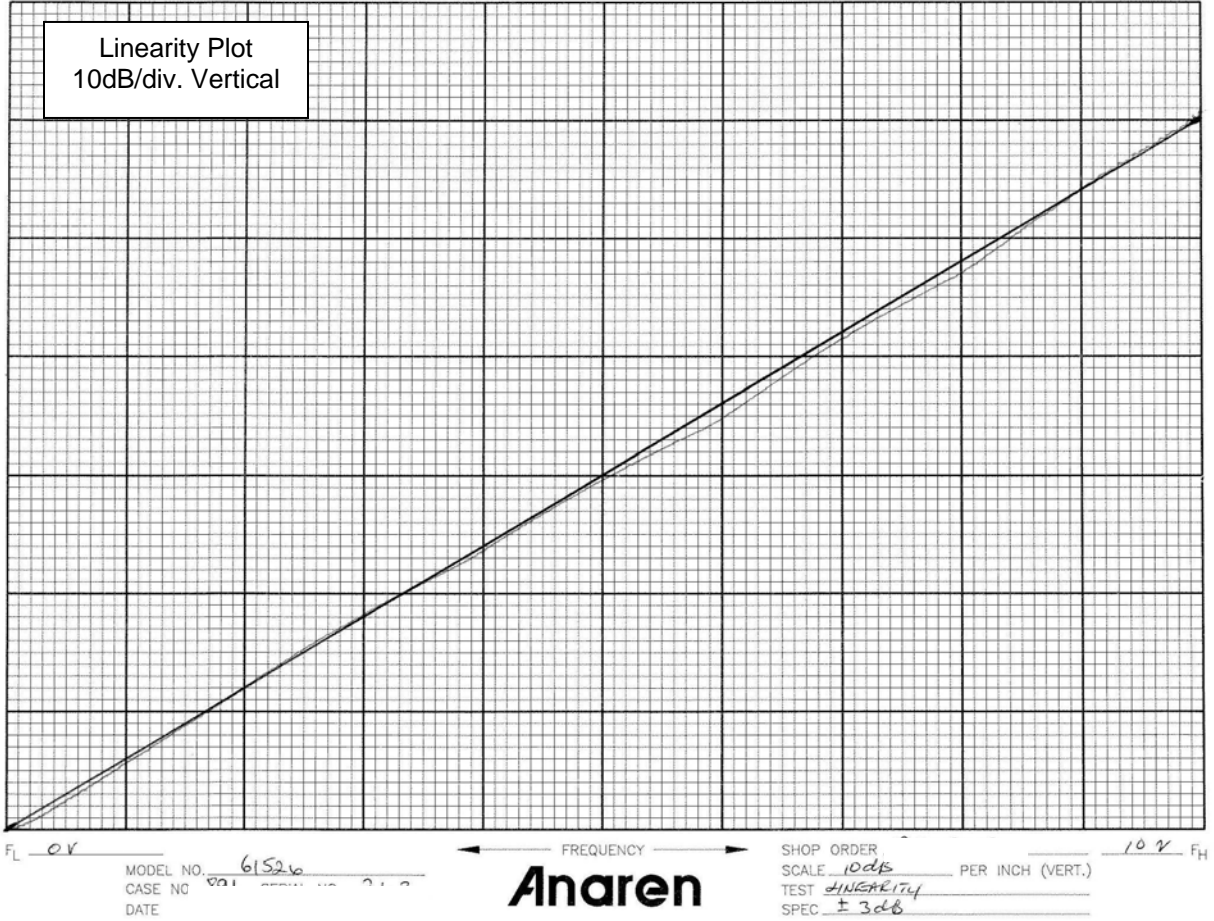
Outline Drawing



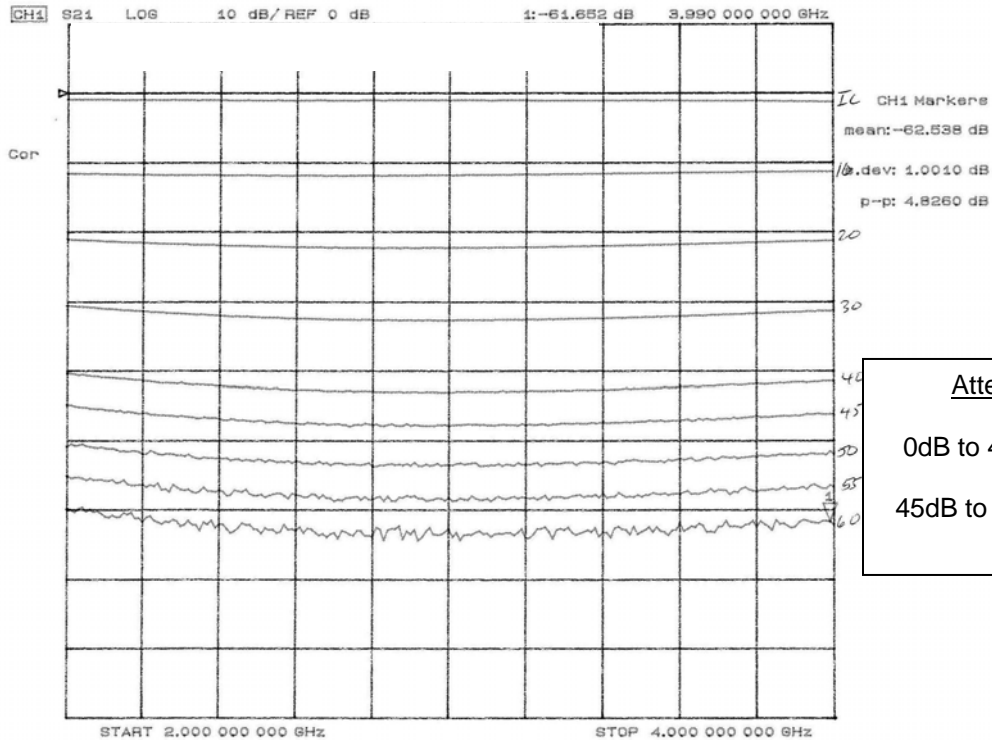
Typical Test Data Plots

FORM 3-0011

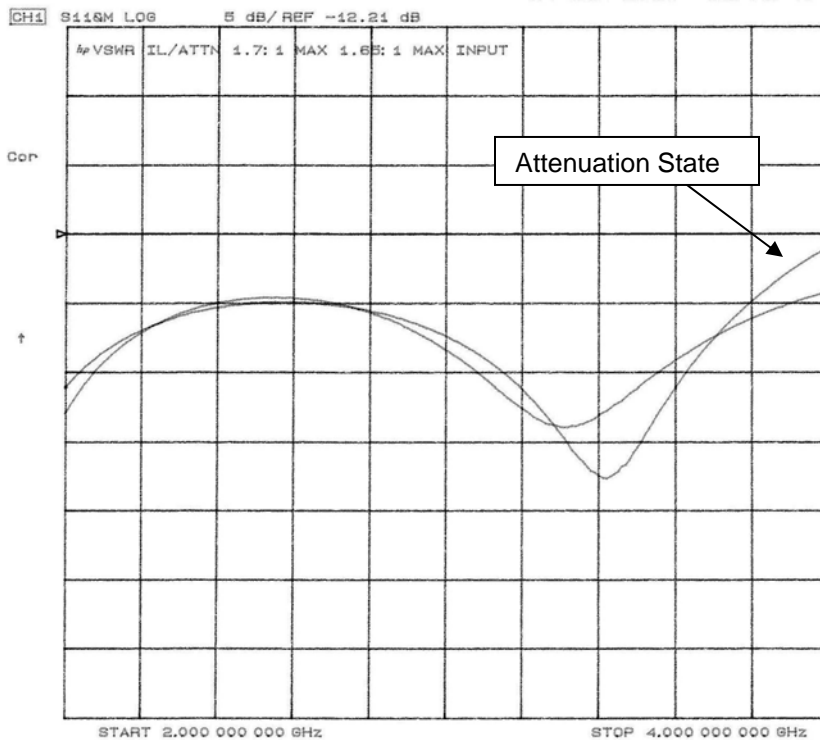
LINEAR TEST DATA SHEET



Typical Test Data Plots

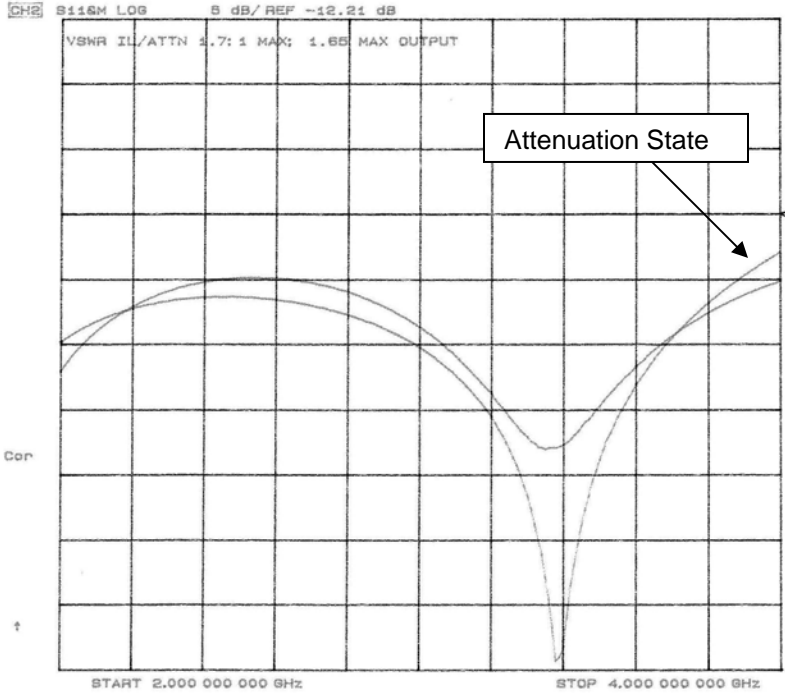


Attenuator Flatness
 0dB to 45dB: +/- 2.5dB Max
 45dB to 55dB: +/- 4.0dB Max

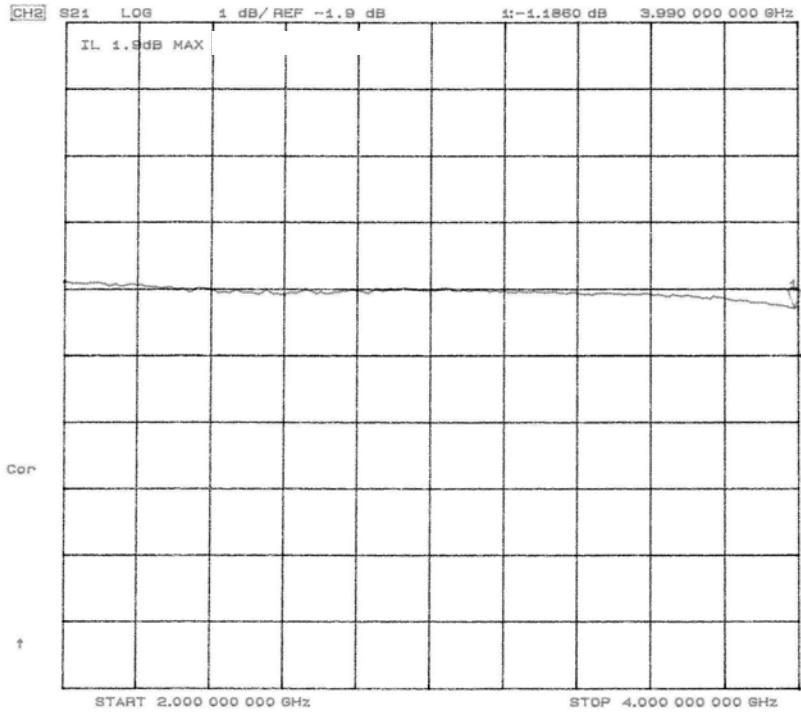


Input VSWR
 1.65:1 Attenuation State
 1.70:1 Ins. Loss State

Typical Test Data Plots



Output VSWR
 1.65:1 Attenuation State
 1.70:1 Ins. Loss State



Insertion Loss
 1.90 dB Max.