

### Directional Couplers In-Line Style

#### Applications

- Subassemblies
- Lab Systems
- Leveling Loops
- Power Monitoring
- Test and Calibration

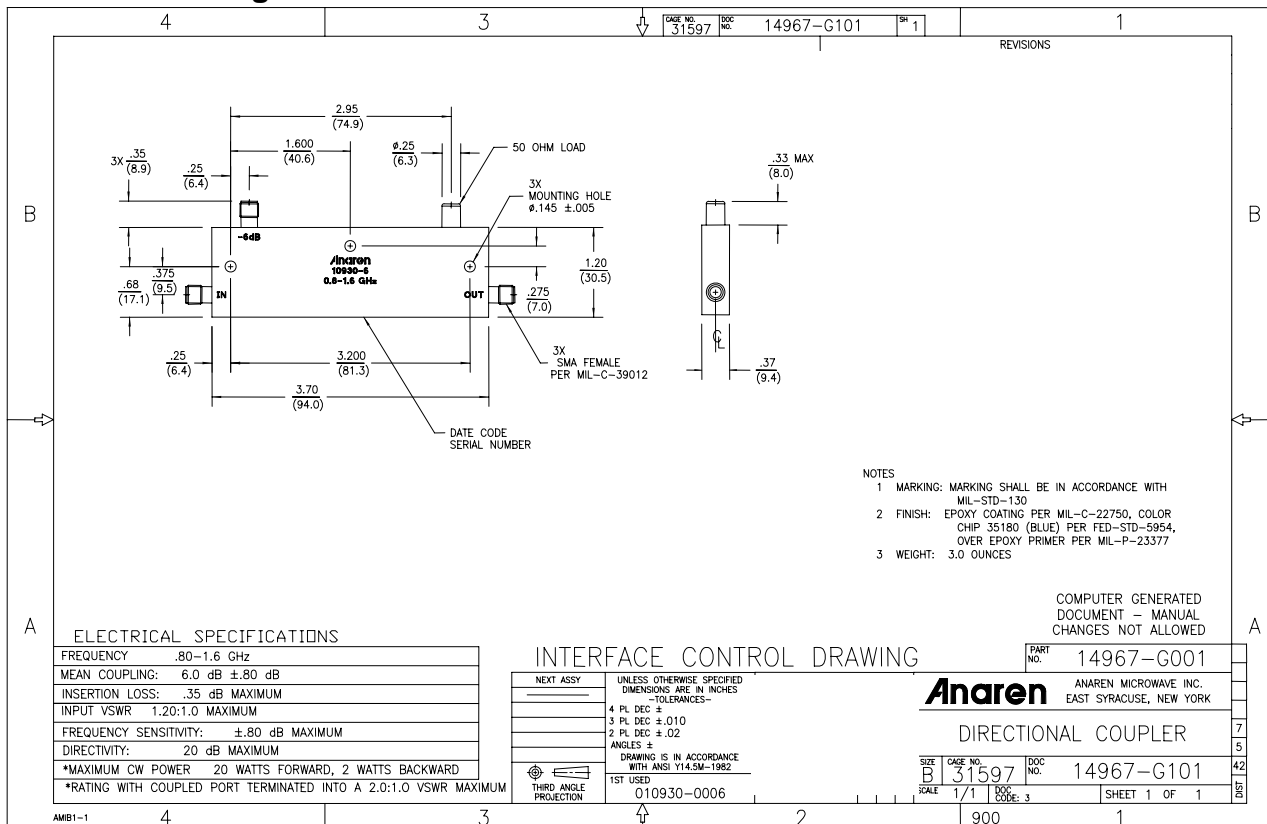
#### Features

- Military Grade
- 0.8 – 1.6 GHz
- In-Line Configuration
- Connectors Per MIL-C-39012
- Rugged Aluminum Housing
- Built in Termination
- Meets MIL-E-5400 Class 3 Requirements

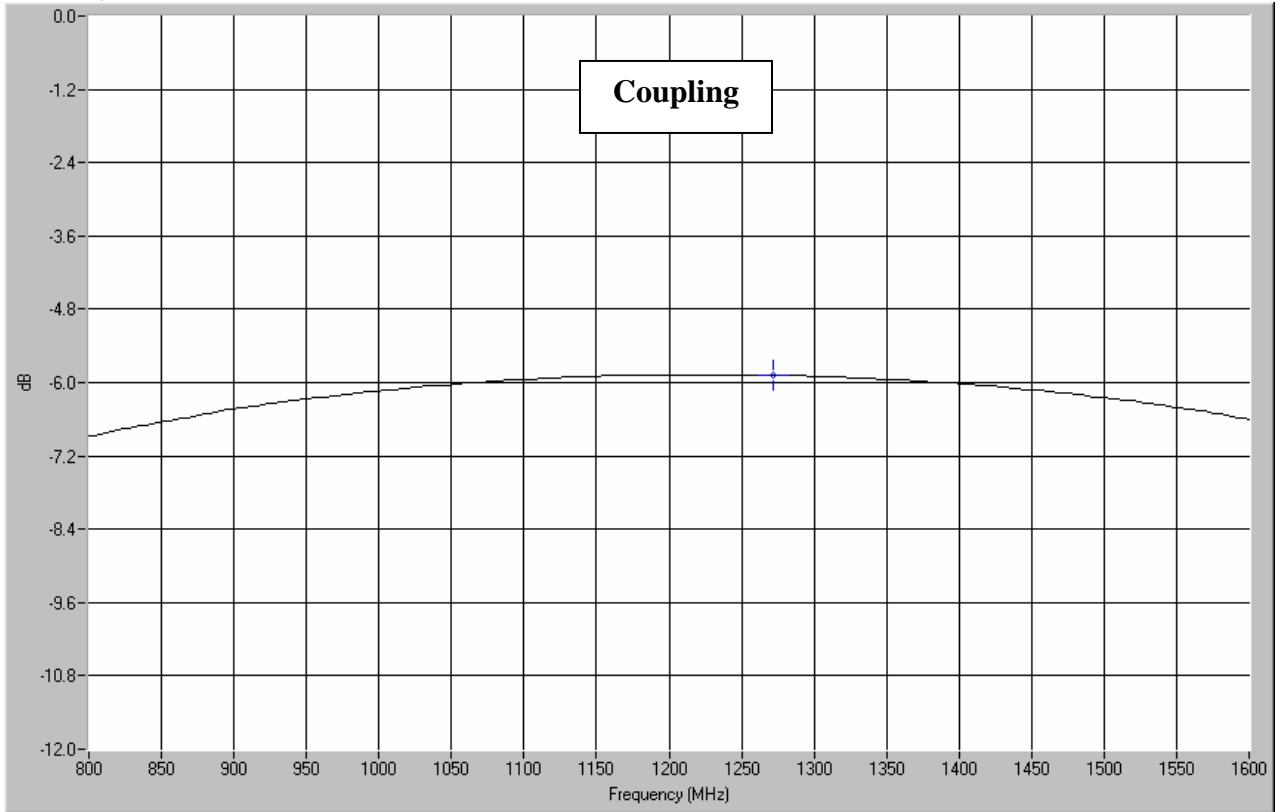


**NOTES:** The power rating applies when coupled port VSWR is 2.0:1 or less.  
Higher power can be handled with a lower VSWR termination  
Electrical and Mechanical Specifications subject to change without notice

#### Outline Drawing

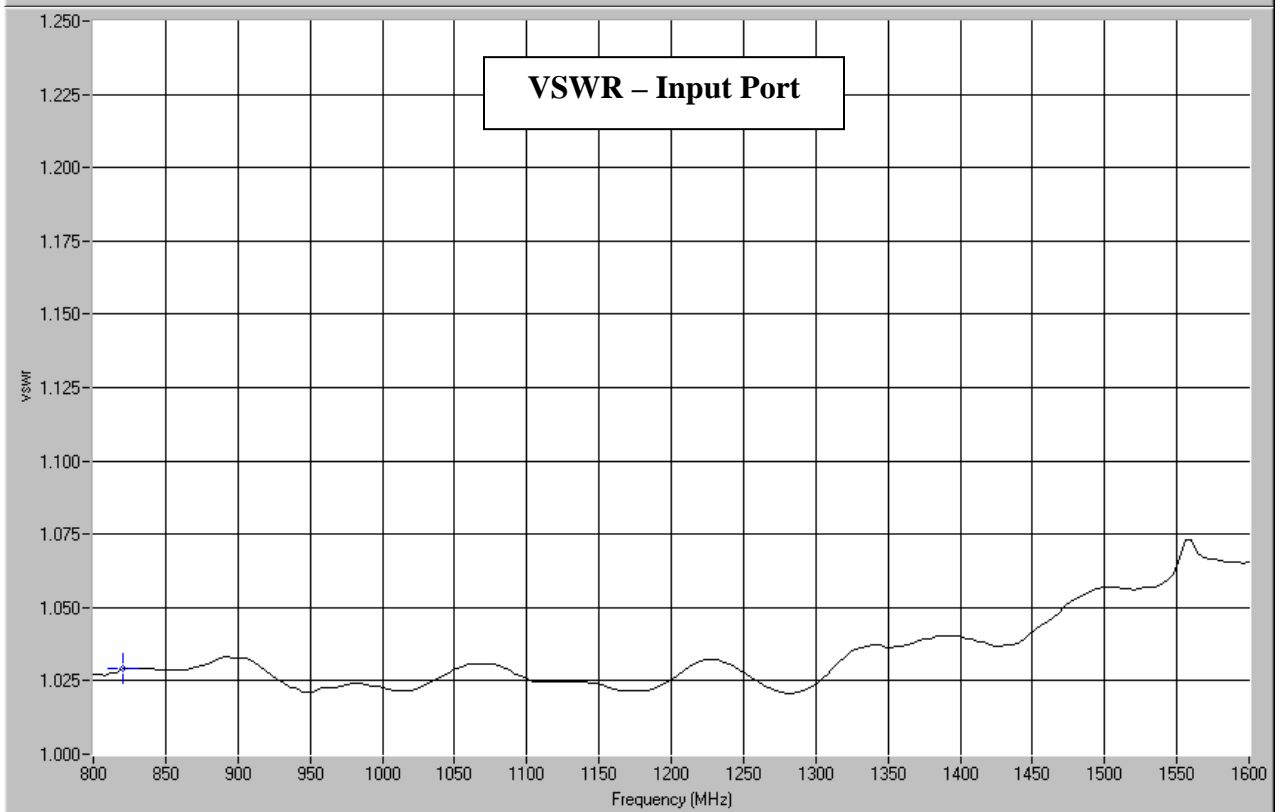
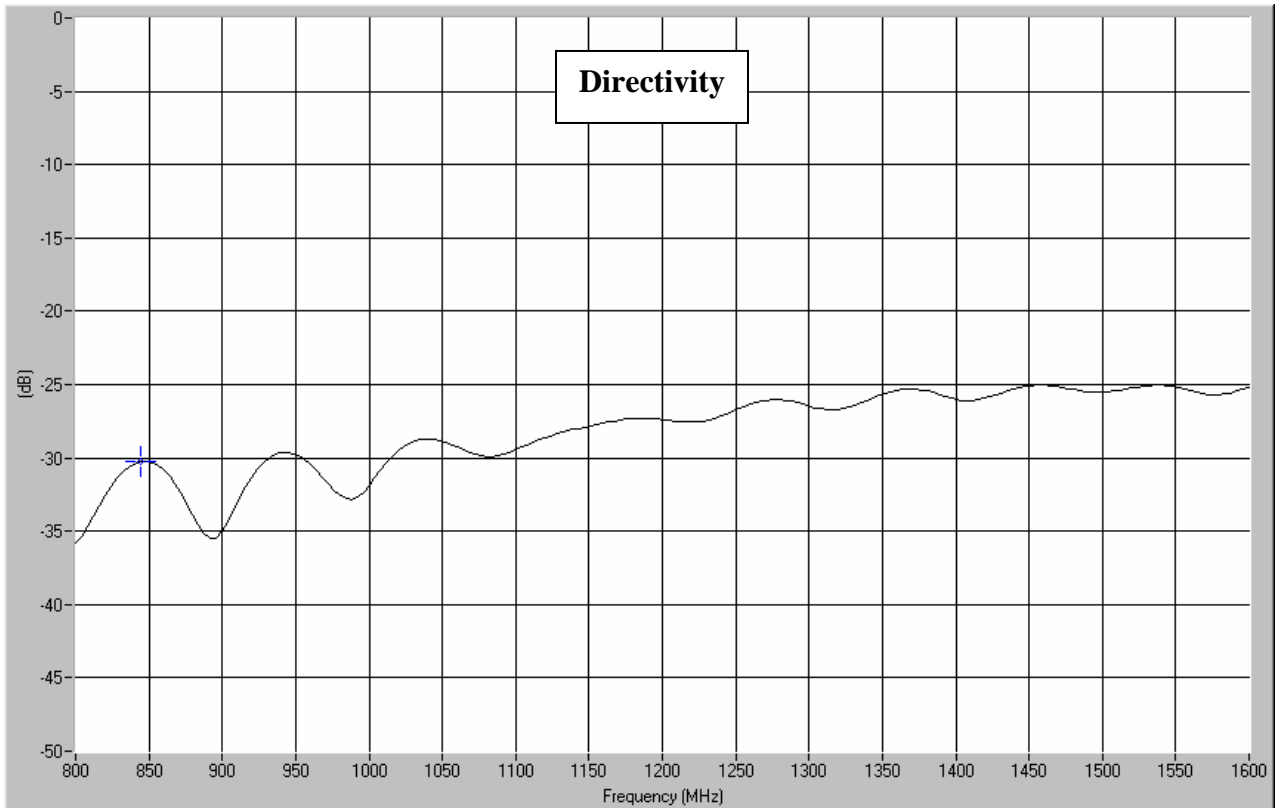


**Typical Test Data Plots**



USA/Canada: (315) 432-8909  
 Toll Free: (800) 411-6596  
 Europe: +44 2392-232392

### Typical Test Data Plots



# Mouser Electronics

Authorized Distributor

Click to View Pricing, Inventory, Delivery & Lifecycle Information:

[Anaren:](#)

[10930-6](#)