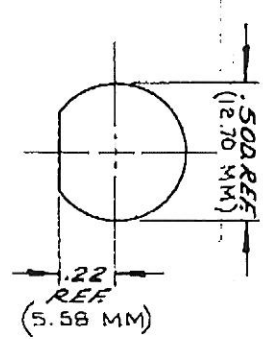
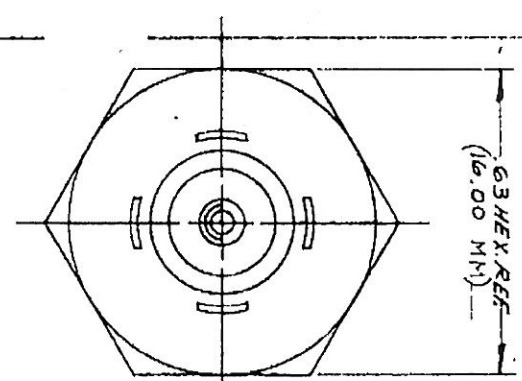
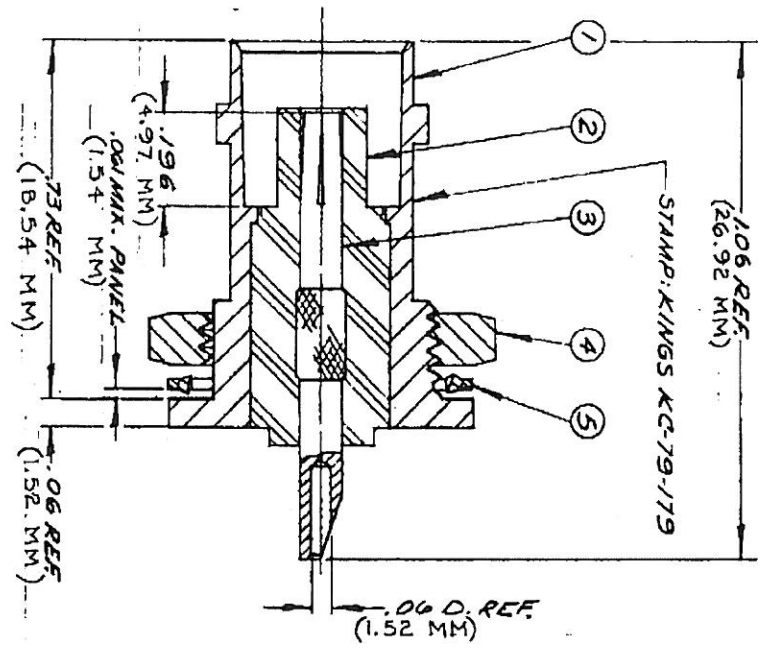


DASH NO. M CODE MADE FROM



UNLESS OTHERWISE SPECIFIED:

1 TOLERANCES FRACTIONS & 2 PLACE DECIMALS ± .010
3 PLACE DECIMALS ± .004
ANGLES ± 0°30'

T. I. R. CONCENTRICITY OF ANY 2 DIAMETERS MAY NOT EXCEED HALF THE SUM OF THEIR TOLERANCES

2 REMOVE ALL BURRS, BREAK SHARP EDGES .005 MAX
3 NO FILLETS PERMITTED.
4 SURFACE ROUGHNESS 63 MICROINCHES RMS MAX.
5 ALL DIMENSIONS PRIOR TO PLATING.
6 ALL PLATING IN ACCORDANCE WITH KER 10004.

(SMT 1 OF 2)

KC-79-179

REVISIONS	
NO.	DESCRIPTION
2	CN/19855C M.A. 19 JAN 80 REDRAWN
3	CN 21964C GJG 18 MAY 81
4	CN 22827C MD 7 DEC 81

S-D

SCALE 4:1

UNLESS OTHERWISE SPECIFIED

REV

BNG BULKHEAD
RECEPTACLE

DRAWN BY: JAC DATE: 6 DEC 79
APP'D BY: JVD DATE: 13 DEC 79

KINGS
ELECTRONICS CO., INC.
WILSON AND NEW YORK

KC-79-179
(SMT 1 OF 2)

