

Model:TA3015FP/FL/FZ-300S

Characteristics:

Vacuum epoxy resin encapsulated, silicon steel sheet core, strong overload capacity; Two kinds of mounting modes: horizontal mounting and vertical mounting. Three types of connection: FP is top soldering piece output type, FL is top leading wire output type, FZ is bottom $\Phi 0.8$ welding needle leads that can be welded on the PCB directly.



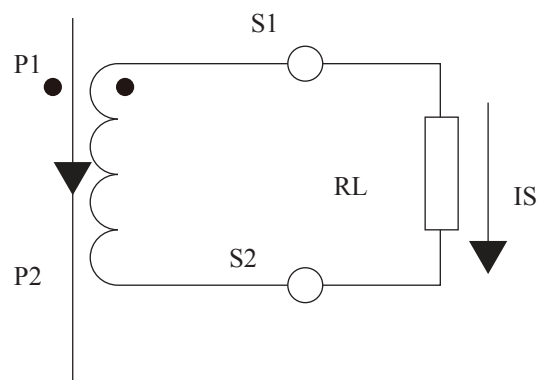
Technical index:

Mounting type: Plate type
 Material of the core: Silicon steel sheet
 Flame resistance: UL94-V0
 Execution standard: GB1208-2006
 Operating temperature: $-35^{\circ}\text{C} \sim +85^{\circ}\text{C}$
 Storage temperature: $-45^{\circ}\text{C} \sim +95^{\circ}\text{C}$
 Frequency range: 20Hz-20KHz
 Dielectric strength: $\geq 3.5\text{KV}$ 50Hz 1min

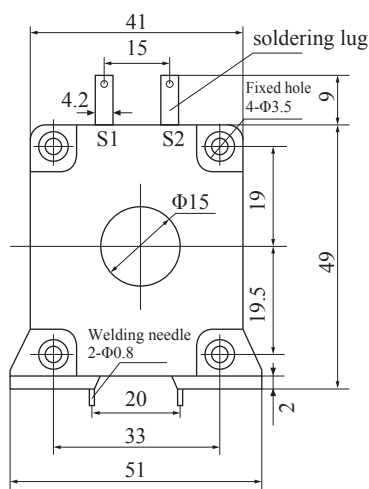
Electrical parameters:

Rated input	0.1-400	A
Max.input		A
Rated output	0.13	A
Turns ratio	1: 3000	
Accuracy		%
Linearity	≤ 0.5	%
Phase difference		
max: Max. sampling resistance	15	Ω
Weight	110	g

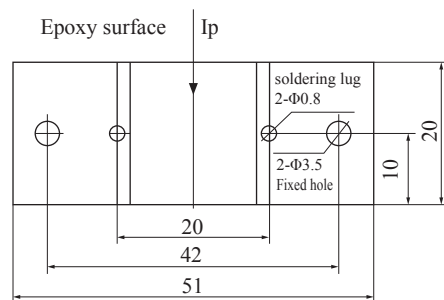
Schematic diagram:



Dimensions (in mm) :



Front view



Bottom view

Noted:Welding needle is used in model FZ.
 Soldering lug is used in model FP.
 Model FL is leading cable from the soldering lug.