

HSF

Recommended P.C.B Layout(Top Side) (PCB BOARD TOLERANCE±0.05)

NOTES:

Current Rating: 3.0AMP
 Contact Resistance: 20mΩ Max
 Withstand Voltage: 1000V AC/DC
 Insulation Resistance: 1000MΩ Min
 Operation Temperature: -40℃ to +105℃

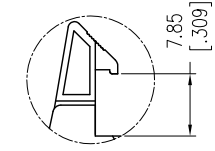
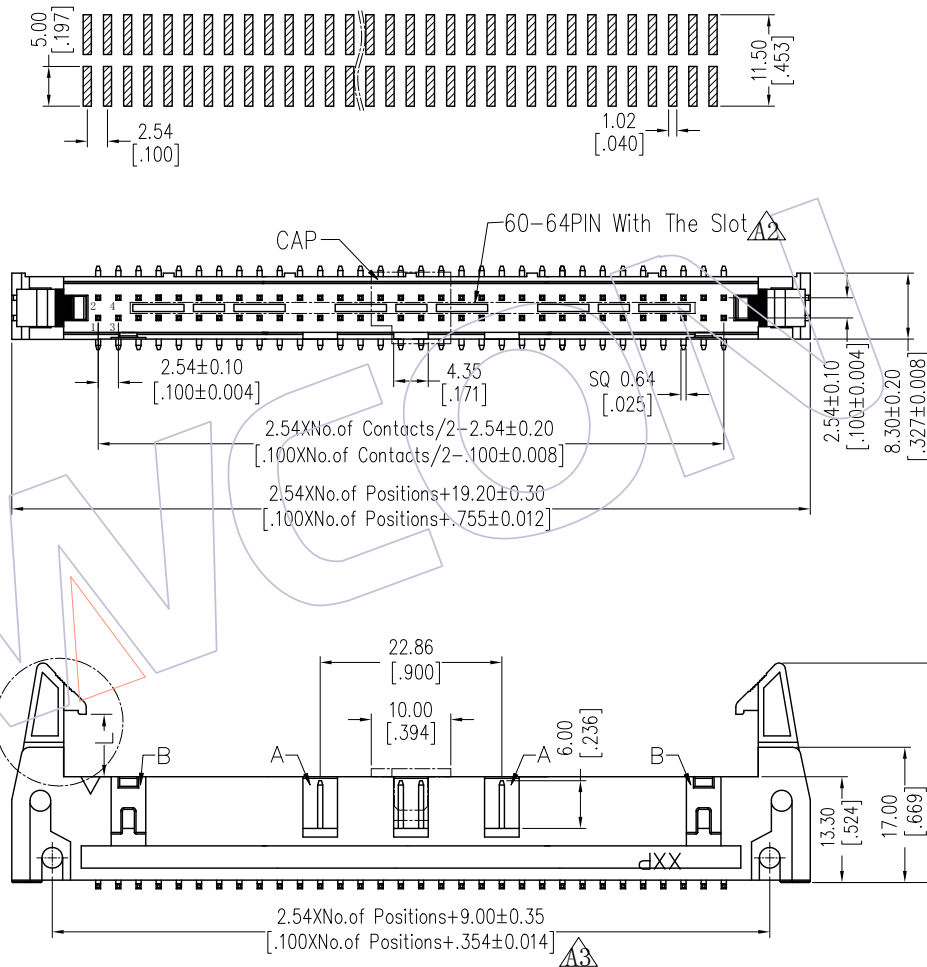
Contact Material: Brass
 Contact plating: Au Or Sn over Ni
 Insulator Material: PA9T+30%G.F UL94V-0

06P-18P Without Slot "A" and "B"
 20P-58P Without Slot "A", With Slot "B"
 60P-64P With Slot "A" and "B"

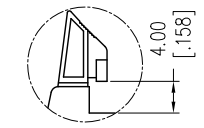
Ordering Information

3210 - XX M XX B X X 1

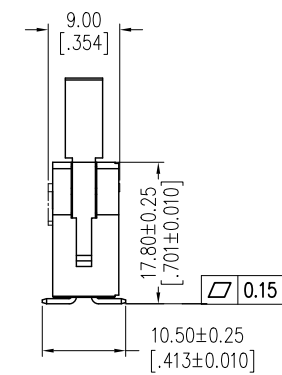
No. of Pins	Contact Plating	Insulator Color	Latch Type	Packing
06 24	G0=Gold Flash	B=Black	L=Long Latch	T=Tube
08 26	G3=10u"Gold		S=Short Latch	P=Tube+CAP
10 30	G4=15u"Gold		N=Without Latch	
12 34	G5=30u"Gold			
14 40	S0=Gold Flash/Tin			
16 50	S3=10u"Gold/Tin			
18 60	S4=15u"Gold/Tin			
20 64	S5=30u"Gold/Tin			
	SN=Sn			



Long Latch



Short Latch



Item	Pitch	Mating
Standard	2.54	5211
Alternate		

REV	DATE	MODIFICATION DESCRIPTION	CHANGE	DIM	TOL	OPERATION	DRAW	DATE	SCALE	FIT	PART NO.
A3	2019/01/04	Modify	△3	x.x	±0.40	OPERATION	Ding	2019/01/04	UNIT	mm	3210-XXMXXBXX1
A2	2014/12/03	Modify	△2	x.xx	±0.25	CHECK			SIZE	A4	TITLE:
A1	2013/02/25	Modify	△1	x.xxx	±0.15	APPROVE			SHEET	1/1	2.54 EJECTOR HEADER SMT
A0	2012/10/08	NEW	---	Angle	± 3°				PROJ.		Customer NO.

WCON

Http: www.wcon.com

WCON-Dongguan Tel: +86 769 85358920 Fax: +86 769 85358915 E-mail: sales@wcon.com	WCON-Kunshan Tel: +86 512 57468408 Fax: +86 512 57468468 E-mail: salesks@wcon.com
---	--