

CCT354571-300-24-00



Applications	Industrial and Infrastructure
AC / DC	AC
Status	Production



Size	
Length(L)	39.50mm Max.
Width(W)	48.50mm Max.
Height(H)	72.00mm Max.
Internal Clamp Diameter	24.00mm Nom.
Detail Size Information	Please refer to the catalog

Electrical Characteristics	
Applicable Current [50/60Hz]	0.1 to 300Arms
Nominal Current Transformation Ratio	3000:1
Output Current Accuracy	100mA ±1mA
Phase Difference	0.7° ±0.5°
Secondary Winding Resistance	103Ω
Open-circuit Protection	7.5V clamp element
Withstanding Voltage [1min.]	2.2kVAC
Insulation Resistance [DC500V]	100MΩ Min.

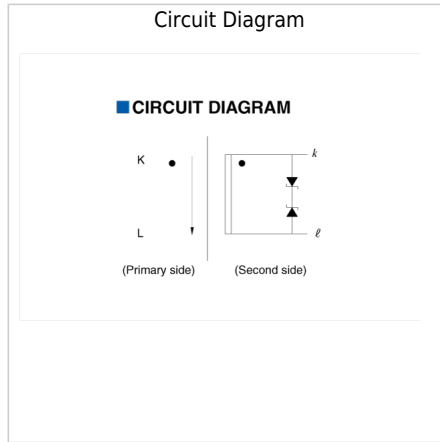
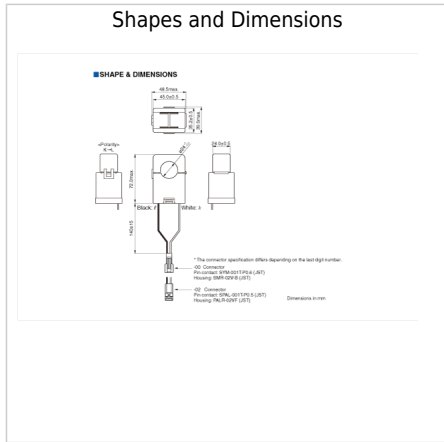
Other	
Output Connector (Receptacle Housing)	SMR-02V-B (JST)
Adaptable Connector (Plug Housing)	SMP-02V (JST)
Output Lead Wire	AWG22 140mm
Flame Retardant Grade	UL 94 V-0
Operating Temp. Range	-20 to 60°C
Packing	Bulk(Polystyrene form)
Package Quantity	24pcs
Weight	221g

! Images are for reference only and show exemplary products.
! This PDF document was created based on the data listed on the TDK Corporation website.
! All specifications are subject to change without notice.

CCT354571-300-24-00



Associated Images



! Images are for reference only and show exemplary products.
! This PDF document was created based on the data listed on the TDK Corporation website.
! All specifications are subject to change without notice.