

| REVISIONS | | | |
|-----------|-----------------------|----------|----------|
| SYM. | DESCRIPTION | DATE | APPROVED |
| A | RELEASED | 06/10/99 | T.L. |
| B | REVISED PER DCN 17245 | 12/12/00 | T.L. |
| C | REDRAWN PER DCN 22773 | 08/20/04 | E.L. |

| DASH NO | NOMINAL I.D. | NO OF CARRIERS PER LAYER | NO OF ENDS PER LAYER | CURRENT RATING AMPS | LBSY 100 FT |
|---------|--------------|--------------------------|----------------------|---------------------|-------------|
| 031 | .031 | 24 | 24 | 7.0 | .20 |
| 062 | .062 | 24 | 48 | 11.0 | .40 |
| 078 | .078 | 24 | 72 | 16.0 | .60 |
| 109 | .109 | 24 | 96 | 19.0 | .83 |
| 125 | .125 | 24 | 120 | 25.0 | 1.03 |
| 156 | .156 | 24 | 240 | 40.0 | 2.09 |
| 171 | .171 | 24 | 168 | 32.0 | 1.43 |
| 188 | .188 | 24 | 192 | 33.0 | 1.63 |
| 203 | .203 | 24 | 312 | 46.0 | 2.80 |
| 250 | .250 | 24 | 384 | 53.0 | 3.45 |
| 375 | .375 | 48 | 384 | 53.0 | 3.95 |
| 500 | .500 | 48 | 528 | 62.0 | 4.77 |
| 625 | .625 | 48 | 720 | 85.0 | 5.94 |
| 781 | .781 | 48 | 864 | 88.0 | 7.35 |
| 937 | .937 | 64 | 640 | 65.0 | 5.83 |
| 1000 | 1.000 | 64 | 768 | 90.0 | 7.50 |
| 1250 | 1.250 | 72 | 792 | T80 | T80 |
| 1375 | 1.375 | 72 | 864 | T80 | T80 |
| 1500 | 1.500 | 72 | 936 | T80 | T80 |
| 2000 | 2.000 | 96 | 1152 | T80 | T80 |
| 2500 | 2.500 | 96 | 1248 | T80 | T80 |



UNLESS OTHERWISE SPECIFIED DIMENSIONS ARE IN INCHES

TOLERANCES:

| | |
|-----------|------------------------|
| FRACTIONS | ± 1/16 |
| DECIMALS | XX ± .03 XXX ± .015 |
| ANGLES | ± 2° |

DO NOT SCALE THIS DRAWING

B/F 99-7281 P/C 100

NON REPAIRABLE COMMERCIAL ITEM

SCALE N/A WEIGHT N/A SHEET 1 OF 1

| DRAWN | T.L.E | 06/09/99 |
|-------|------------|----------|
| CHECK | P.D. | 06/09/99 |
| ENGR | R. PAINTER | 06/09/99 |

RELEASE DATE: 06/10/99

NON REPAIRABLE COMMERCIAL ITEM

SCALE: N/A WEIGHT: N/A SHEET: 1 OF 1

GLENAIR, INC.
1211 AIR WAY - GLENDALE - CALIFORNIA 91201
CAO 1995°

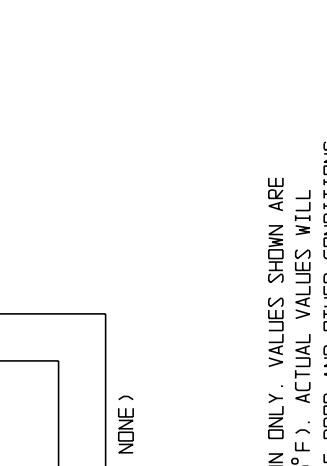
BRAID, SINGLE LAYER TUBULAR, SILVER/COPPER

CODE IDENT. NO: 06324
SIZE: C
REV. 100-002

1. DIRECT CURRENT RATING ARE GIVEN FOR INFORMATION ONLY. VALUES SHOWN ARE FOR UNINSULATED BRAID IN FREE AIR, AT 30°C (86°F). ACTUAL VALUES WILL DEPEND ON PERMISSIBLE TEMPERATURE RISE, VOLTAGE DROP AND OTHER CONDITIONS OF SERVICE. VALUES SHOULD BE DE-RATED IF THE BRAID IS INSULATED OR IN CLOSE CONTACT WITH OTHER COMPONENTS.

2. MINIMUM ORDER LENGTH: 100 FEET, FOR LONGER LENGTHS BRAID WILL BE SUPPLIED IN RANDOM LENGTHS, NR. OF REELS & SIZE MFG. OPTION. CONTINUOUS LENGTHS MUST BE SPECIFIED BY CUSTOMER.

3. MATERIAL/FINISH:
BRAID - COPPER/SILVER PLATED I.A.W. 00-8-575B, ASTM B298 CLASS C
LANYARD - SYNTHETIC FIBER



| SYM. | DESCRIPTION | DATE | APPROVED |
|------|-----------------------|----------|----------|
| A | RELEASED | 06/10/99 | T.L. |
| B | REVISED PER DCN 17245 | 12/12/00 | T.L. |
| C | REDRAWN PER DCN 22773 | 08/20/04 | E.L. |