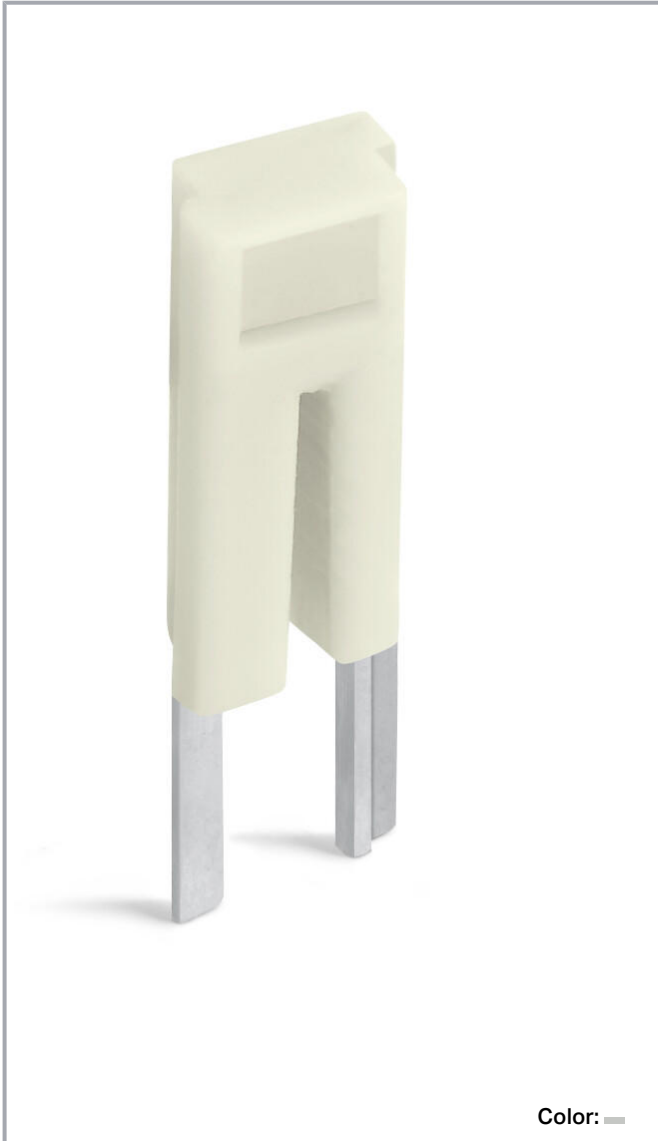


Data sheet | Item number: 2002-400

Continuous jumper; 2-way; insulated; light gray

www.wago.com/2002-400



Data

Electrical data

Subject to changes. Please also observe the further product documentation!

WAGO GmbH & Co. KG
Hansastr. 27
32423 Minden
Phone: +49571 887-0 | Fax: +49571 887-169
Email: info.de@wago.com | Web: www.wago.com

Do you have any questions about our products?
We are always happy to take your call at +49 (571) 887-44222.

**Ratings per IEC/EN**

Nominal voltage (III/3)	800 V
Rated current	25 A

Physical data

Width	4.1 mm / 0.161 inch
Height	5.7 mm / 0.224 inch
Jumper assignment	2-way

Material data

Color	light gray
Fire load	0.005 MJ
Weight	0.7 g

Commercial data

Product Group	22 (TOPJOB S)
PU (SPU)	25 Stück
Packaging type	bag
Country of origin	DE
GTIN	4055143686877
Customs tariff number	85366990990

Downloads**Documentation****Bid Text**

2002-400 X81 - Datei	2019. 2. 19.	xml 2.6 kB	Download
2002-400 doc - Datei	2017. 4. 27.	doc 24.1 kB	Download

Additional Information

Technical explanations	pdf 2.2 MB	Download
------------------------	---------------	----------

Subject to changes. Please also observe the further product documentation!

CAD/CAE-Data

CAE data

WSCAD Universe 2002-400	URL	Download
ZUKEN Portal 2002-400	URL	Download
EPLAN Data Portal 2002-400	URL	Download

CAD data

2D/3D Models 2002-400	URL	Download
-----------------------	---------------------	--------------------------

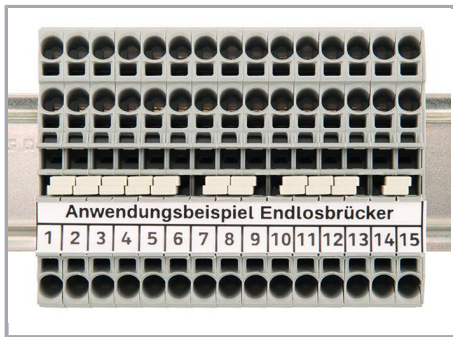
Environmental Product Compliance

Compliance Search

Environmental Product Compliance 2002-400 Continuous jumper; 2-way; insulated; light gray	URL	Download
--	---------------------	--------------------------

Installation Notes

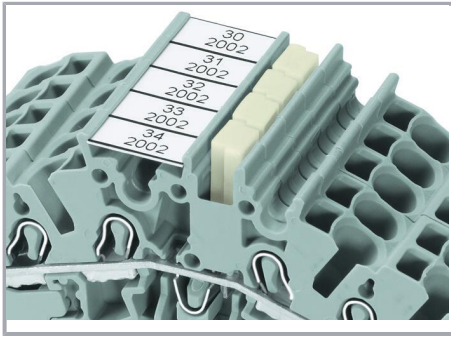
Commoning



Continuous jumpers (2002 Series) readily connect an endless number of terminal blocks to each other via single jumper slot. Use the second jumper slot for additional commoning or testing.

Commoning

Subject to changes. Please also observe the further product documentation!



Adjacent Jumpers for Continuous
Commoning (2002-400)

Product family

TOPJOB® S

TOPJOB® S: In various industrial applications and modern building installations, WAGO's wide and versatile range of rail-mount terminal blocks provides more than just reliable electrical connections.

[Show all products from the family](#)

Subject to changes. Please also observe the further product documentation!