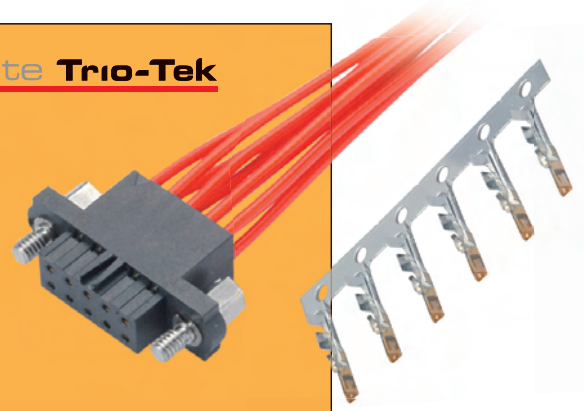


# Datamate Connectors

Female Crimp Trio-Tek

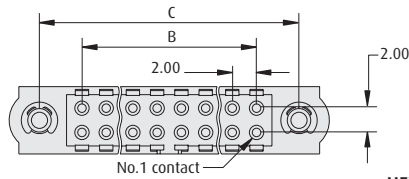
Datamate Trio-Tek

- ❖ Crimp inspection window in housing.
- ❖ Mates with Male connectors shown on pages 34 to 43.
- ❖ Contacts available separately, see page 16.
- ❖ Triangular contact design for automated assembly equipment.
- ❖ Ideal for volume applications.

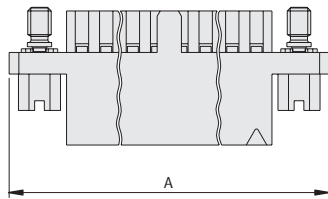


## WITH JACKSCREWS

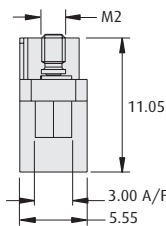
## CALCULATION



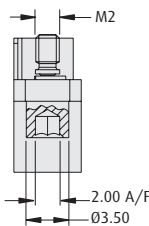
<b>A</b>	B + 12
<b>B</b>	Total No. of Contacts - 2
<b>C</b>	B + 7



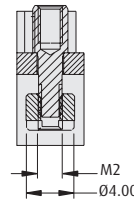
### HEX SLOTTED



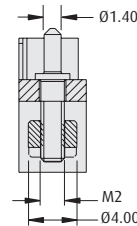
### HEX SOCKET



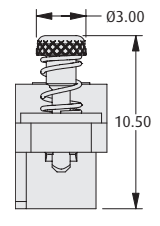
### REVERSE FIX



### GUIDE PIN WITH PANEL MOUNT

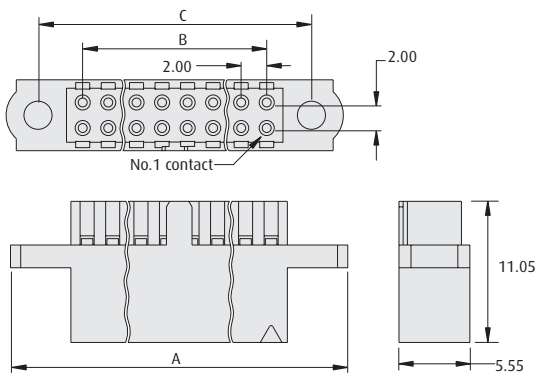


### 101Lok



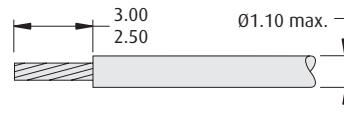
## WITHOUT JACKSCREWS

## TOOLS



**Recommended Crimp Tool** - Z80-255  
**Contact Removal Tool** - Z80-258  
 See page 78  
 ❖ Instruction sheets available at [www.harwin.com/downloads/instructions](http://www.harwin.com/downloads/instructions)

## WIRE STRIPPING DETAILS



## HOW TO ORDER

**M80 - 45X XX XX**

### SERIES CODE

### HOUSINGS

<b>454</b>	Without Jackscrews	<b>457</b>	Reverse Fix Jackscrews
<b>455</b>	Hex Slotted Jackscrews	<b>458</b>	Guide pin with panel mount
<b>456</b>	Hex Socket Jackscrews	<b>459</b>	101Lok jack screws

### FINISH

**98** Housings

### TOTAL NO. OF CONTACTS

**06, 08, 10, 12, 14, 20, 26, 34, 42, 50**

All dimensions in mm.

[www.harwin.com](http://www.harwin.com)

