

SLIP RINGS

PLR20-8101

FEATURES

- Unit product contains a motor as driving source
- Easy position control with built-in sensor
- Provided with connector terminals for easy connection

APPLICATIONS

- Game machines
- Others



PART NUMBER DESIGNATION

PLR20 - 8101

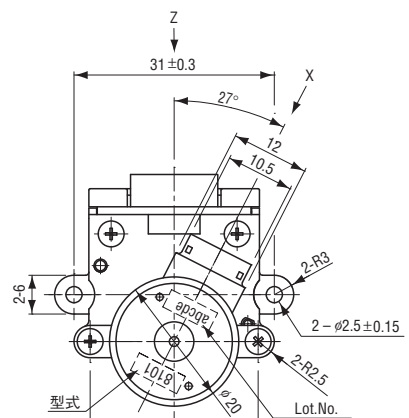
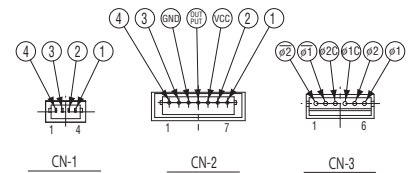
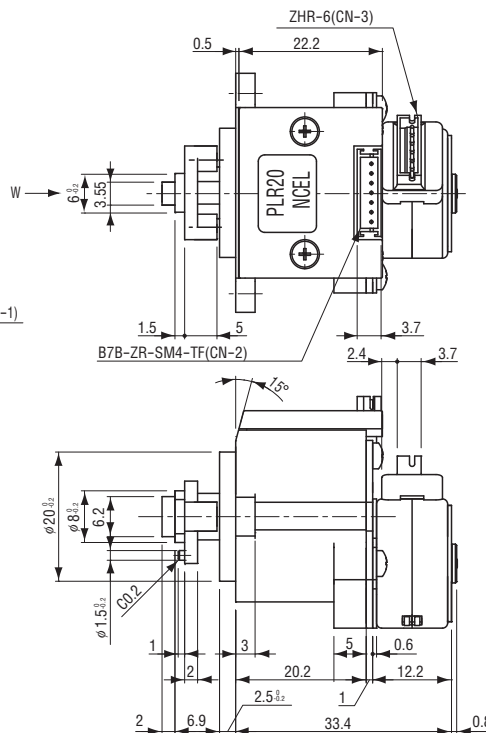
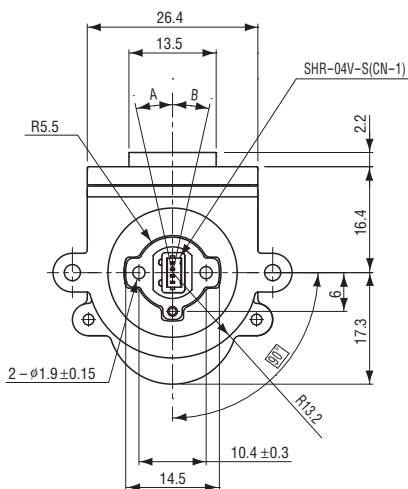
Series name

Dash number

OUTLINE DIMENSIONS

Unless otherwise specified tolerance: ± 0.5 (Unit: mm)

IN	OUT
B7B-ZR-SM4-TF	SHR-04V-S
CN2-1	CN1-1
CN2-2	CN1-2
VCC	-
OUTPUT	-
GND	-
CN2-3	CN1-3
CN2-4	CN1-4



Lot production is required. Please consult us for ordering.

PLR20-8101

SLIP RINGS

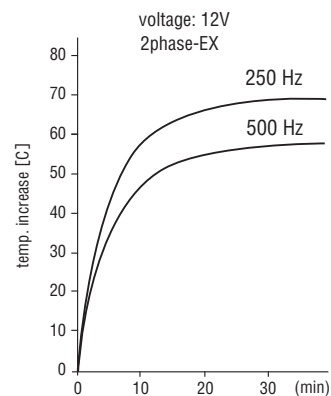
STANDARD SPECIFICATIONS

Item	PLR20-8101
Number of phases / Excitation	4/2 phases unipolar
Gear ratio	1 / 5
Basic step angle	3.6 °
Steps	100
Winding resistance	68 Ω
Power	Average power consumption 2W Max.
Current/Phase	216mA Max.
Contact resistance	2 Ω Max. (Initial value)
Allowable current/pole	0.8A Max.
Operating temperature	0 ~ 50°C
Net weigh	Approx. 37g
Connector terminal	<p>Male connector 06ZR-8M or ZHR-6 Made by J.S.T.Mfg.Co.,Ltd</p>

SENSOR CHARACTERISTICS

Item	Rating	Reference
Input voltage	4.5 V ~ 18 V	
Output open-circuit voltage	18 V	
Output inflow current	15 mA	
Output saturation voltage	0.4 V	Output L I = 10 mA
Input current	8 mA	Vcc = 12 V

TEMPERATURE CHARACTERISTICS



※ These performance curves show actual value, not guaranteed