

NOTES: UNLESS OTHERWISE SPECIFIED

1. MATERIAL SPECIFICATIONS:

BODY, NUT, BKHD BUSHING: BRASS PER ASTM B16
 CONTACT: BERYLLIUM COPPER PER ASTM B196
 INSULATOR: TEFLON PER ASTM D1710
 CE INSULATOR: ULTEM1000
 LOCKWASHER: PHOSPHOR BRONZE PER ASTM B103

2. FINISH SPECIFICATIONS:

CENTER CONTACT: .000030 MIN GOLD PER ASTM B488 OVER .000080 MIN NICKEL PER AMS-QQ-N-290 (ROHS).
 BODY, LOCKWASHER: .000100MIN NICKEL PER AMS-QQ-N-290
 OVER COPPER FLASH PER ASTM B734 (ROHS)
 CONTACT: .000030 MIN. GOLD PER ASTM B488, OVER NICKEL PER AMS-QQ-N-290 (ROHS)
 ALL OTHER METAL PARTS: .000050 MIN NICKEL PER AMS-QQ-N290 OVER
 .000050 MIN COPPER PER ASTM B734 (ROHS)

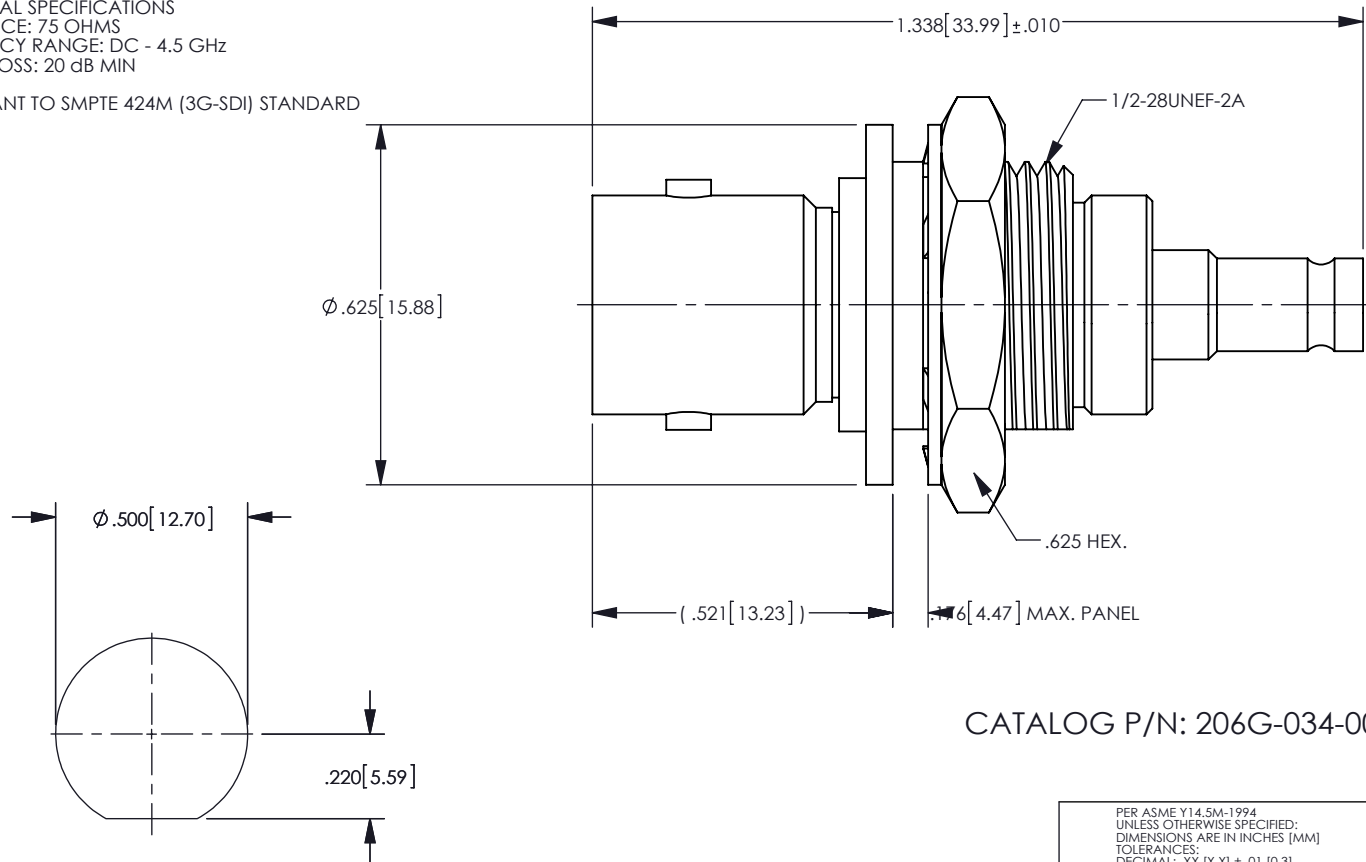
3. LOCKWASHER, NUT SHIPPED LOOSE.

4. ELECTRICAL SPECIFICATIONS

IMPEDANCE: 75 OHMS
 FREQUENCY RANGE: DC - 4.5 GHz
 RETURN LOSS: 20 dB MIN

5. COMPLIANT TO SMPTE 424M (3G-SDI) STANDARD

REV	DESCRIPTION	BY DATE	APPD
A	RELEASED PER ER042252	06/07/12 BS	CY



CATALOG P/N: 206G-034-00003N

RECOMMENDED MOUNTING HOLE

PER ASME Y14.5M-1994 UNLESS OTHERWISE SPECIFIED: DIMENSIONS ARE IN INCHES [MM] TOLERANCES: DECIMAL: .XX [X.X] ± .01 [0.3] .XXX [X.XX] ± .005 [0.13] .XXXX [X.XXX] ± .XXXX ANGLES: ± 2° SCALE: 3:1				
CUSTOMER SALES DRAWING				
DRAWN CY	DATE 02/12/12	APPROVED DCam	DATE 02/17/12	
APPROVED GSA	DATE 02/17/12	APPROVED XXX	DATE XX/XX/XX	



by WINCHESTER
 ELECTRONICS
 Winchester Electronics Corporation
 62 Barnes Industrial Road North
 Wallingford, Connecticut 06492

BNC TO 1.0/2.3, 75 OHM
 F-F, BKHD, ISOLATED ADAPTER
 (RoHS COMPLIANT)

A	SD206G-034-00003N	SHT 1	OF 1	REV A
----------	-------------------	----------	---------	----------