

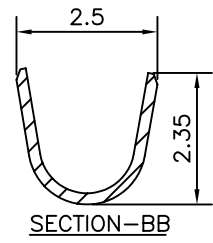
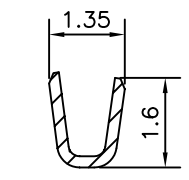
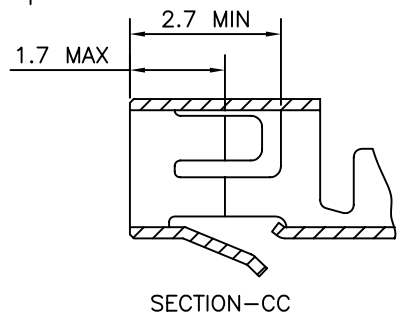
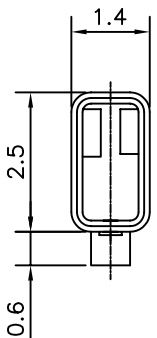
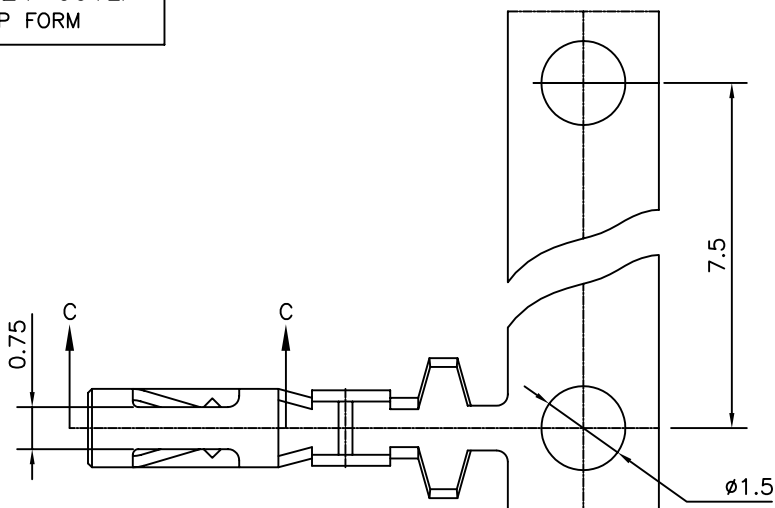
PART NO. 76624-001LF
STRIP FORM

A

B

C

D



TECHNICAL DATA:

PHYSICAL:
MATERIAL - PHOSPHER BRONZE
PLATING - 1µ MIN. TIN PLATED

ELECTRICAL PERFORMANCE:
CURRENT RATING - 2 AMP. DC
CONTACT RESISTANCE - 20mΩ.Max.

PACKAGING:
REEL - 4000 PCS PER REEL

1.LF Products meet European Union Directives and other country Regulations as described in GS-22-008.
2.Lead Free or ROHS Directive labelling to be provided as per GS-14-920 for Lead Free version.

mat'l. code			surface ISO 1302 ✓		tolerance ISO 406 ISO 1101		projection		product family RELIMATE		
ltr			ecn no		dr		date		title		
H			106-0023		HVN		2006-07-20		RELIMATE TERMINAL (AWG#22-#26)		
J			110-0147		NPM		2010-07-10				
angles			linear		±0.1		MM		scale 8:1		
±1°					-						
dr			MINI K VANDANATH		2003-04-14		FCI		dwg no		
enr			HIRAN.V.N		2003-04-14				sheet 1 of 1		
chr			NEBUPM		2010-07-10				76624		
appd			NEBUPM		2010-07-10				size A4		
sheet index			revision sheet		J		1		type Product Customer Drawing		

form: A4

1

2

PDM: Rev:J

STATUS: Released

Printed: Jul 11, 2010



FCIconnect.com

Copyright FCI