

GT-TC034X-HXXX-LX

品赞科技



G-SWITCH

Operating Force

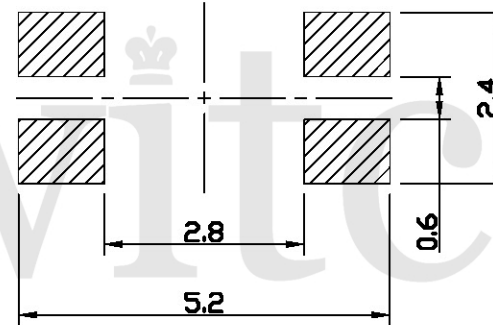
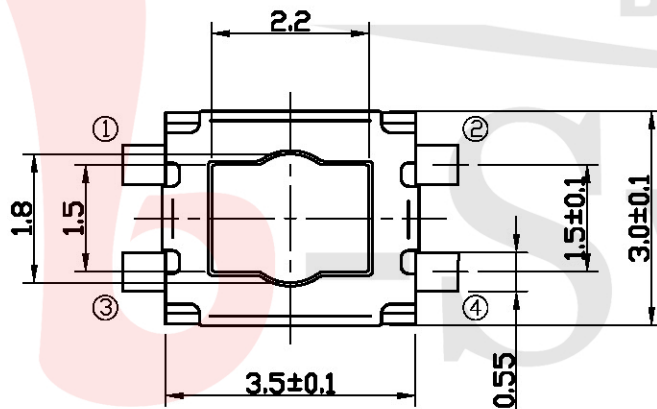
- A=160gf
- B=250gf
- C=100gf
- D=350gf

Switch Height (mm)

- H018=1.8mm
- H025=2.5mm

Switch lifetime (Force)

L1=100,000 Cycles



P.C.B LAND DIMENSION

G-Switch Specification:

Operating temperature range: -30°C to +85°C

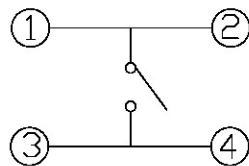
Rating: 50mA, 12V DC

Insulation resistance: 100MΩ min. 100V DC

Dielectric strength: 250V AC for 1 min

Contact resistance: 100m Ω max.

Travel: 0.15±0.05mm



CIRCUIT DIAGRAM



G-Switch Electronic (HongKong) CO.,Ltd.

Unless otherwise specified, Tolerance:
 X. ±0.30
 X.x ±0.20
 X.xx ±0.15
 X.xxx ±0.10
 Angles ±3°

DESIGN	陈伟枫	DATE	2021.03.08
CHECKED		DATE	
APPROVED		DATE	
http://www.dg-switch.com			
TEL: 0769-82388879			

Molde code:		
GT-TC034X-HXXX-LX		
REV.: X1	SCALE: 4:1	UNIT: mm
SIZE: A4	SHEET: 1/1	