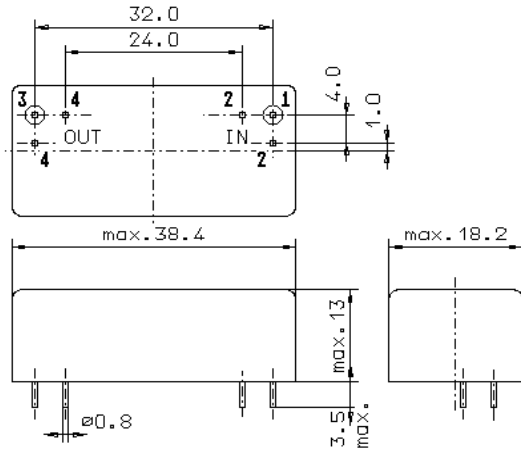


Specification for monolithic crystal filter:

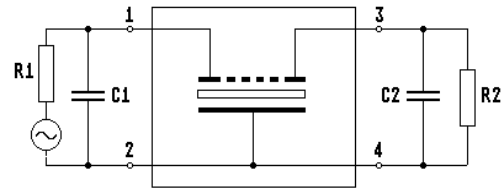
**MQF 158.25 – 2500 / 03**

## 1. General

### 1.1. Package:



GM17



- |                                   |                    |
|-----------------------------------|--------------------|
| 1.2. Type name:                   | MQF 158.25-2500/03 |
| 1.3. Number of poles:             | 6                  |
| 1.4. Operating temperature range: | -20°C to +70°C     |
| 1.5. Storage temperature range:   | -45°C to +85°C     |

## 2. Electric values

- |   |   |
|---|---|
| 2.1. Nominal centre frequency $f_0$ :                                       | 158.25 MHz                                      |
| 2.2. <b>Pass band</b>   |   |
| 2.2.1. Bandwidth between 3 dB - frequencies:                                | $\geq f_0 \pm 12.5$ kHz                         |
| 2.2.2. Ripple:  | $\leq 2.0$ dB at $f_0 \pm 10$ kHz               |
| 2.2.3. Insertion loss:<br>( measured on smallest attenuation in pass band ) | $\leq 7.0$ dB                                   |
| 2.3. <b>Stop band</b>   |   |
| 2.3.1. $f_0 \pm 50$ kHz   | $\geq 50$ dB                                    |
| 2.3.2. $f_0 \pm 100$ kHz  | $\geq 60$ dB                                    |
| 2.3.3. Alternate attenuation  | $\geq 55$ dB ( except spurious )                |
| 2.4. Terminating impedance ( input and output ):                            | $50 \Omega // 0$ pF                             |
| 2.5. Maximum input power level:   | -10 dBm / + 10 dBm ( working / without damage ) |
| 3. Marking:   | manufacturer, date code<br>MQF 158.25-2500/03   |
| 4. Environment conditions:  | Corresponding to Vectron standard CF001         |

Edited by: \_\_\_\_\_ date: \_\_\_\_\_ name: \_\_\_\_\_