

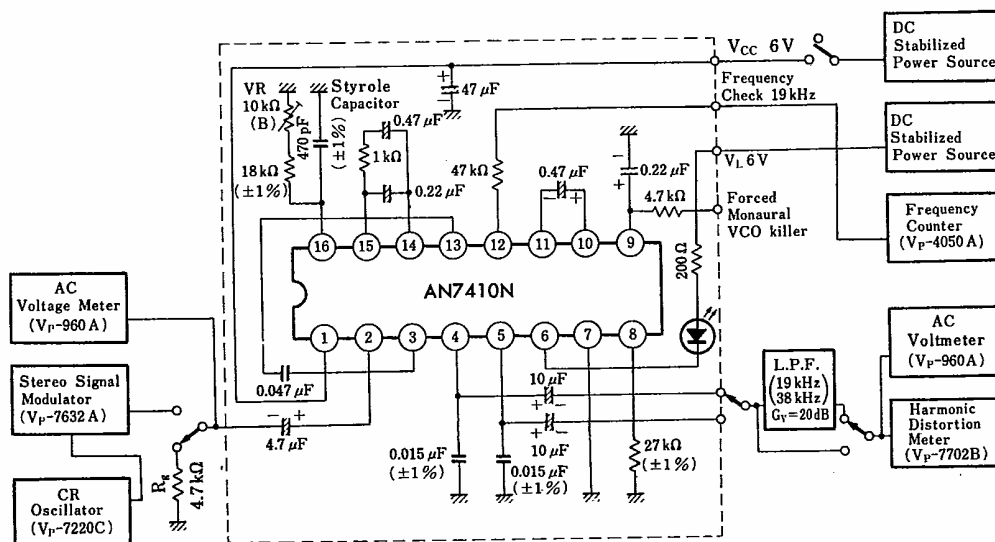
■ 絶対最大定格/Absolute Maximum Ratings (Ta=25°C)

Item	Symbol	Rating	Unit	
電圧	電源電圧	V _{CC}	12	V
	回路電圧	V ₆₋₇	12	V
回路電流	I ₆	75	mA	
許容損失	P _D	360	mW	
動作周囲温度	T _{opr}	-20~+75	°C	
保存温度	T _{stg}	-55~+155	°C	

■ 電気的特性/Electrical Characteristics (V_{CC}=6V, Ta=25°C)

Item	Symbol	Test Circuit	Condition	min.	typ.	max.	Unit
全回路電流	I _{tot}	1	V _i =0	9	13	17	mA
分離度	Sep	1	V _(L+R) =135 mV _{rms} , f _m =1 kHz	30	45		dB
ステレオ全高調波歪率	THD	1	V _p =15 mV _{rms}		0.1	0.3	%
モノラル全高調波歪率	THD	1			0.1	0.3	%
モノラル出力電圧	V _O	1	V _i =150 mV _{rms} f _m =1 kHz	125	145	170	mV _{rms}
モノラルチャンネルバランス	CB	1		-1	0	+1	dB
ランプ点灯パイロット電圧	V _{P(ON)}	1	Pilot signal (19 kHz)	4.5	6	8.5	mV _{rms}

Test Circuit 1



注1) VCO 自己発振周波数は、周波数チェック端子で19.000 kHz(±10 Hz) に調整する。

注2) 外付部品は精度指定以外は、(±5%) 以内のものを使用。

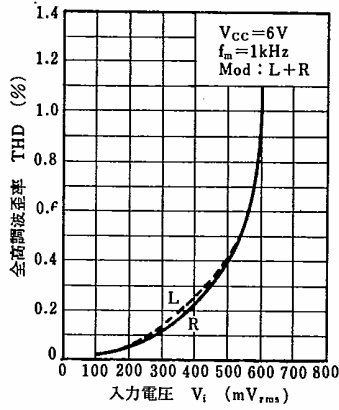
L.P.F は BL-43 (光輪技研製) を内蔵した利得 20 dB のフィルタアンプ。

Note 1) VCO frequency is adjusted to 19.000 kHz (±10 Hz) by the frequency check terminal.

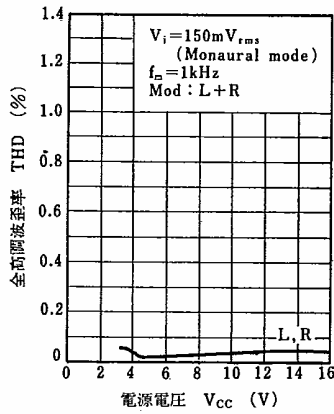
Note 2) Outer component should be in less than (±5%) unless otherwise specified.

L.P.F (BL-43) is a filter amplifier with gain 20 dB manufactured by Korin Giken.

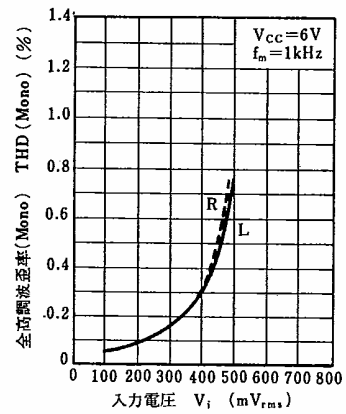
THD - V_i



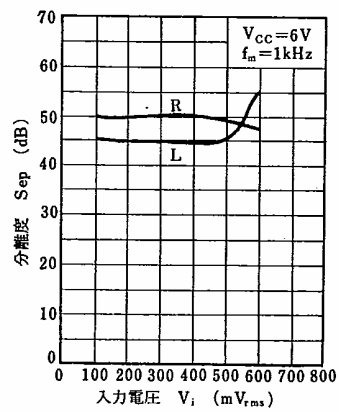
THD - V_{CC}



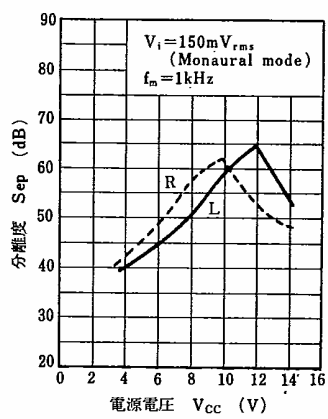
THD(Mono) - V_i



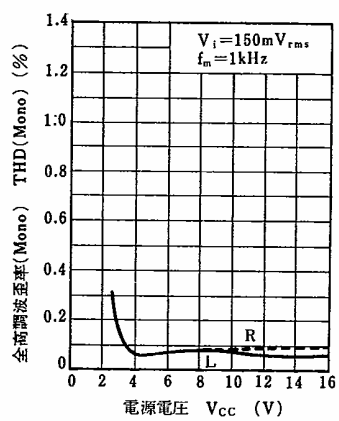
Sep - V_i



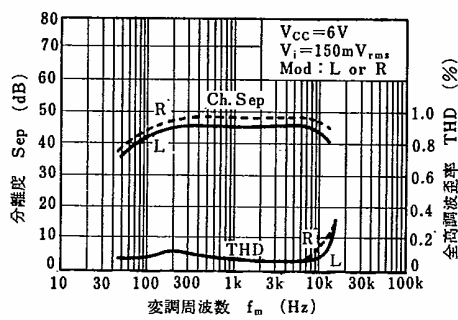
Sep - V_{CC}



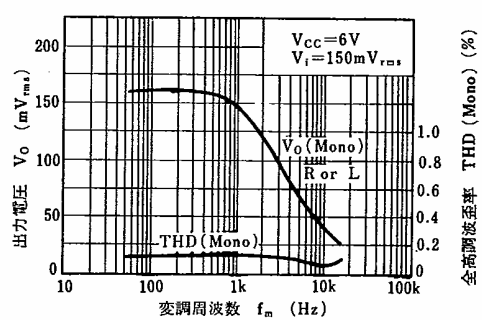
THD(Mono) - V_{CC}



Sep, THD - f_m



V_o , THD(Mono) - f_m



Copyright © Each Manufacturing Company.

All Datasheets cannot be modified without permission.

This datasheet has been download from :

www.AllDataSheet.com

100% Free DataSheet Search Site.

Free Download.

No Register.

Fast Search System.

www.AllDataSheet.com