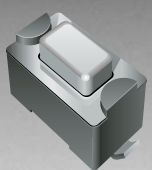



RoHS COMPLIANT



BOURNS®

Features

- Available sharp click feel with a positive tactile feedback
- Ultraminiature and lightweight structure suitable for high density mounting
- Economical
- Reliable
- RoHS compliant *

 The STS Series is currently available, although not recommended for new designs.

STS Series - Ultraminiature Tactile Switch

Electrical Characteristics

Electrical Life
50,000 Cycles for 160 gf, 320 gf Rating
50 mA, 12 VDC Contact Resistance
100 mΩ max. Insulation Resistance
100 MΩ min. @ 500 VDC Dielectric Strength
250 VAC/1 minute Contact Arrangement
SPST

Environmental Characteristics

Operation Temperature Range
-25 °C to +70 °C Storage Temperature Range
-30 °C to +80 °C Vibration Test
 MIL-STD-202F Method 201A Frequency
10-55-10 Hz/1 minute Directions
X,Y,Z, three mutually perpendicular directions Time
2 hours each direction Shock Test
 MIL-STD-202F Method 213B Condition A Gravity
50 G (peak value), 11 msec Direction and Times
6 sides and 3 times in each direction

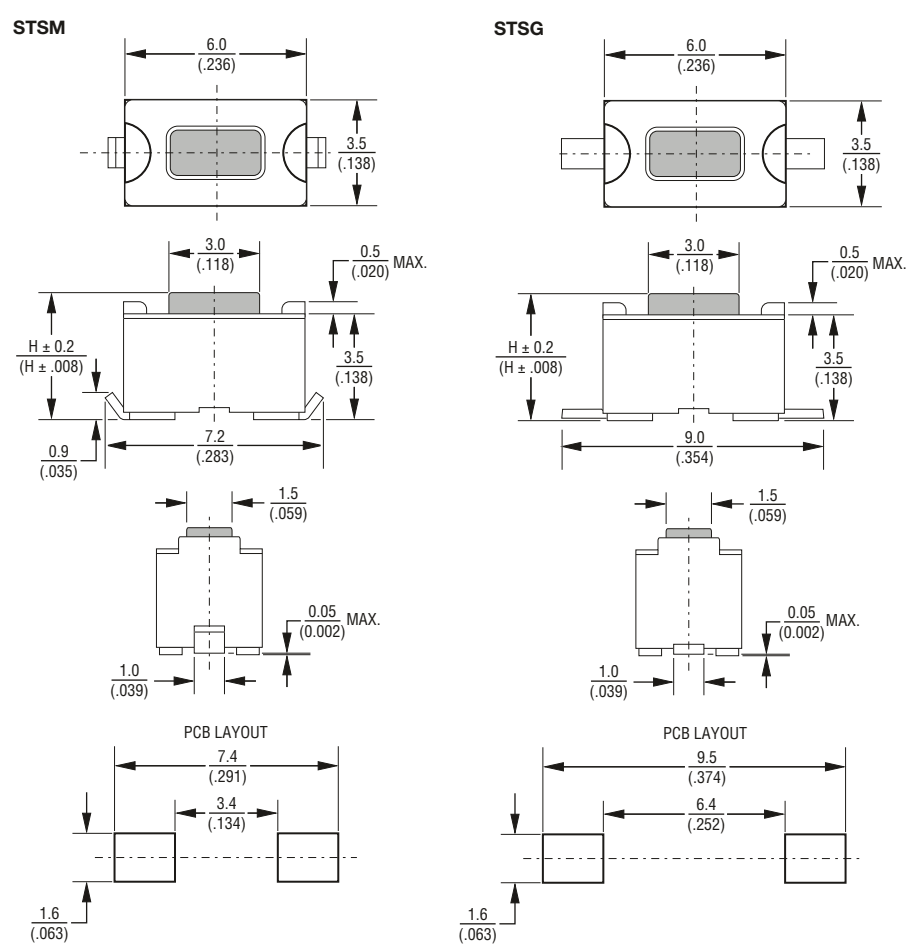
Physical Characteristics

Cover Materials.....Stainless Steel Base MaterialsUL94V-0 Nylon Thermoplastic ActuatorUL94V-0 Nylon High-Temperature Thermoplastic Contact DiscStainless steel with silver cladding Terminals.....Brass with silver cladding

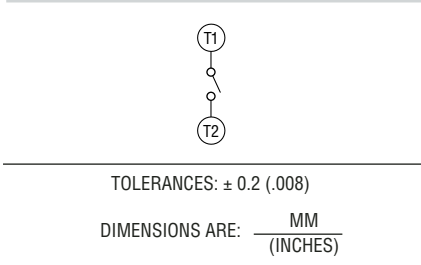
How to Order

Model **STS M - 3 1 - S TR**
 Style
 M = Surface Mount "J" Style
 G = Surface Mount "G" Style
 H = Through-hole "H" Style
 Product Size
 3 = 3.5 mm wide x 6 mm long
 Height
 1 = 4.3 mm
 2 = 5.0 mm
 Color of Stem for Actuating Force
 N = Brown, 160 g
 R = Red, 260 g
 S = Salmon, 320 g
 Y = Yellow, 520 g
 Packaging Option
 = Std. Packaging - 135 pcs./tube
 TR = Tape & Reel Packaging -
 31 - 1800 pcs./reel (STSM & STSG only)
 32 - 1600 pcs./reel (STSM & STSG only)

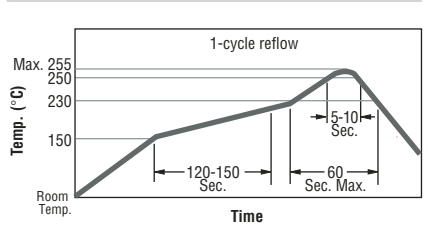
Product Dimensions



Circuit Diagram



Reflow Soldering Profile



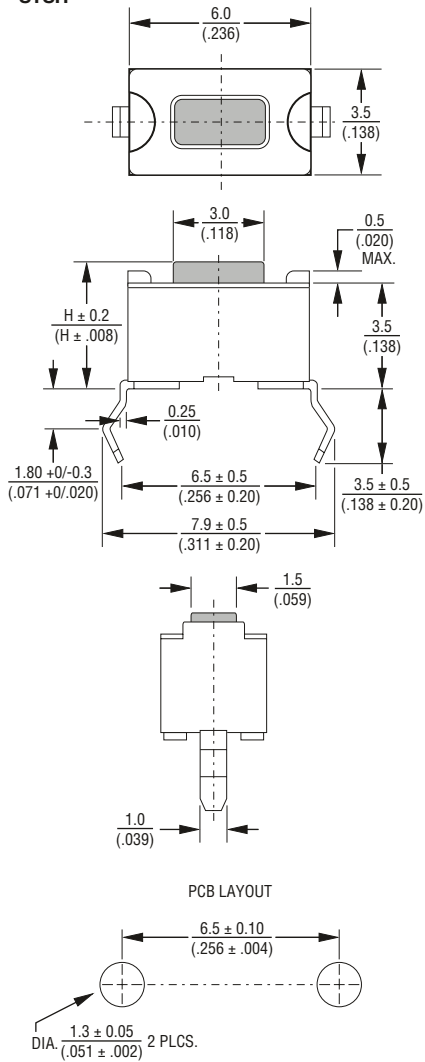
*RoHS Directive 2002/95/EC Jan 27 2003 including Annex. Specifications are subject to change without notice. Customers should verify actual device performance in their specific applications.

STS Series - Ultraminiature Tactile Switch

BOURNS®

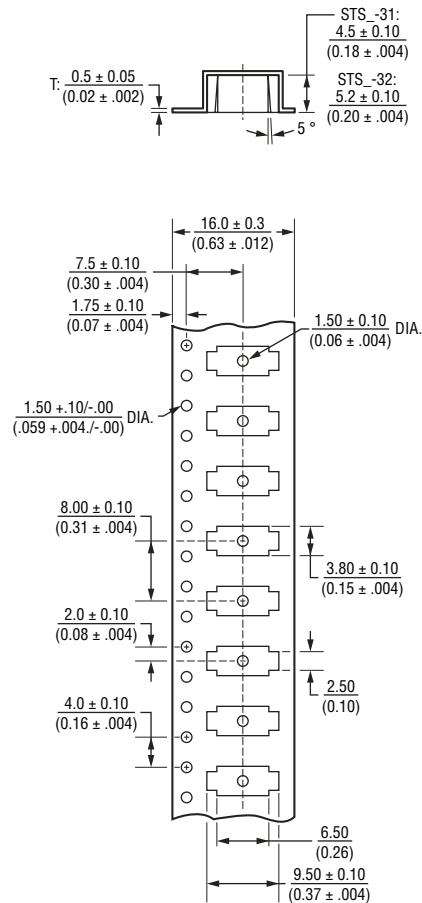
Product Dimensions

STSH

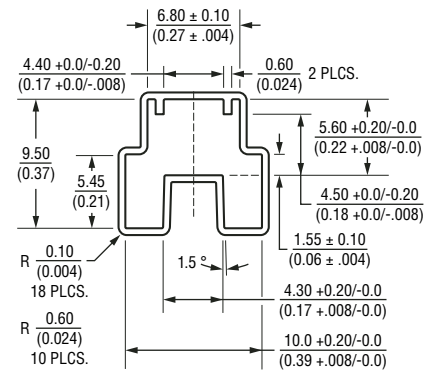


Packaging Specifications

STSG
STSM



STSH



TOLERANCES: ± 0.2 ($.008$)

DIMENSIONS ARE: $\frac{\text{MM}}{\text{(INCHES)}}$