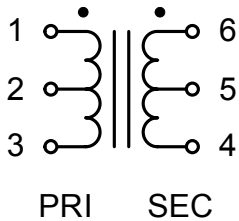


# P.C. Board & Chassis Mount (140-141 Series)

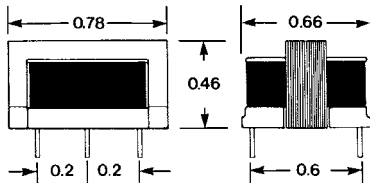


## LOW PROFILE - P.C. BOARD MOUNT AUDIO TRANSFORMERS

- Pin type (0.25" length & 0.035" diameter), P.C. board mount
- Low profile, open type construction
- Frequency response 200 Hz. - 15 KHz. (+/- 2 db, ref. @ 1 KHz.)
- Net weight 0.6 oz.



| Part No.    | Nominal Impedance |           | Max. Pri. D.C. ma | D.C. Resistance |           | Output Milliwatts |
|-------------|-------------------|-----------|-------------------|-----------------|-----------|-------------------|
|             | Primary           | Secondary |                   | Primary         | Secondary |                   |
| <b>141B</b> | 200K              | 1000      | 0                 | 3775            | 85        | 4                 |
| <b>141D</b> | 3000 C.T.         | 1000 C.T. | 1                 | 120             | 51        | 150               |
| <b>141F</b> | 25K               | 50        | 2                 | 1645            | 65        | 100               |
| <b>141H</b> | 600 C.T.          | 600 C.T.  | 2                 | 32              | 45        | 150               |
| <b>141M</b> | 30K               | 1200 C.T. | 2                 | 1100            | 47        | 100               |
| <b>141P</b> | 1200 C.T.         | 8         | 2                 | 50              | 0.45      | 150               |



Audio

## CHASSIS MOUNT - SHIELDED AUDIO TRANSFORMERS



- Insulated leads 5" long minimum
- Stamped steel case (Diameter of 1.25" and height of 1") for excellent shielding - low hum pick-up.
- Frequency response 70 Hz. - 11 KHz. (+/- 1 db, ref. @ 1 KHz.)
- Case hole mounting centers are 1.6"
- Net weight 2 oz.

| Part No.    | Application                 | Nominal Impedance |            | Overall Turns Ratio |
|-------------|-----------------------------|-------------------|------------|---------------------|
|             |                             | Primary           | Secondary  | Pri. to Sec.        |
| <b>140A</b> | Voice Coil to Single Grid   | 4                 | 60000      | 1:122               |
| <b>140B</b> | Dyn. MIC. to Single Grid    | 30                | 60000      | 1:45                |
| <b>140C</b> | MIC. to Single Grid         | 50                | 60000      | 1:34.5              |
| <b>140H</b> | Bridging Line to P.P. Grids | 10000             | 40000 C.T. | 1:2                 |
| <b>140K</b> | MIC. to Single Grid         | 150               | 60000      | 1:2                 |
| <b>140M</b> | CRYS, MIC. to Base          | 100K              | 1500       | 8:1                 |
| <b>140N</b> | Dyn. MIC to Base            | 50                | 1500       | 1:5.5               |
| <b>140P</b> | Line to Base                | 150/600           | 600/2400   | 1:2                 |
| <b>140Q</b> | Line to Line                | 600 C.T.          | 600 C.T.   | 1:1                 |



**CANADA**  
Guelph, Ontario (519) 822-2960  
St. Laurent, Quebec (514) 343-9010  
**USA**  
Cheektowaga, NY (716) 630-7030

[www.hammondmfg.com](http://www.hammondmfg.com)

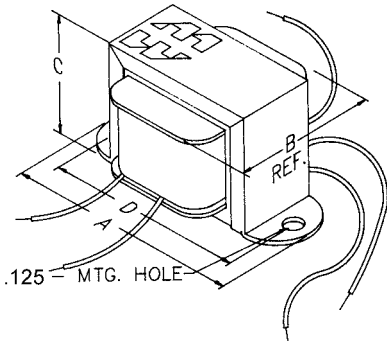


**EUROPE**  
Basingstoke, UK 01256 812812

**AUSTRALIA**  
Queenstown, Australia 61-8-8240-2244

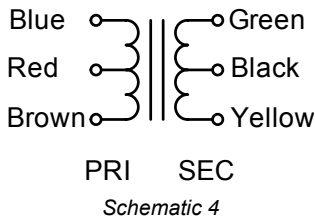
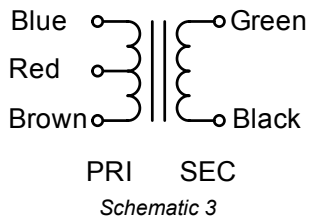
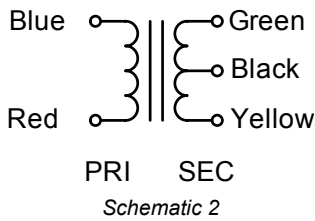
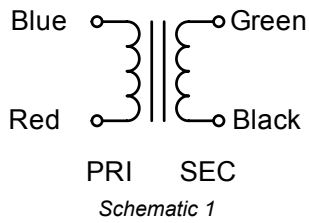
# Chassis Mount (143-146 Series)

## CHASSIS MOUNT AUDIO TRANSFORMERS



- Economical, open, two hole horizontal bracket mount.
- Insulated, color coded flexible leads, 4" long minimum (143, 144 & 145 Series) or 3" long minimum (146 Series).
- For a similar, P.C. board mount version, refer to our 148 & 149 Series.
- Frequency response 150 Hz. to 15 KHz. (+/- 1 db, reference 1000 Hz.)
- When operating at impedances below nominal, power capability and the frequency spectrum are proportionately lower, conversely, at higher impedances power capability and frequency spectrum will be proportionately higher.
- Net weight: 0.5 oz. (143, 144 & 146 Series) & 1.4 oz. (145 Series).

| Series No. | Dimensions (Inches) |      |      |      |
|------------|---------------------|------|------|------|
|            | A                   | B    | C    | D    |
| 143...     | 1.35                | 0.69 | 0.69 | 1.06 |
| 144...     | 1.35                | 0.69 | 0.69 | 1.06 |
| 145...     | 1.63                | 0.88 | 0.81 | 1.38 |
| 146...     | 1.63                | 0.88 | 0.81 | 1.38 |



| Part No. | Application   | Nominal Impedance |           | Pri. D.C. (*1) ma | D.C. Resistance +/- 15% |           | Output mW | Sch. |
|----------|---------------|-------------------|-----------|-------------------|-------------------------|-----------|-----------|------|
|          |               | Primary           | Secondary |                   | Primary                 | Secondary |           |      |
| 143B     | Input         | 3.2               | 4000      | 0                 | 0.4                     | 245       | 15        | 1    |
| 143D     | Input         | 200K              | 1000      | 0                 | 4500                    | 30        | 25        | 1    |
| 143H     | Driver        | 1500              | 500 C.T.  | 4                 | 111                     | 24        | 30        | 2    |
| 143J     | Driver        | 3000              | 1000 C.T. | 2.6               | 265                     | 53        | 30        | 2    |
| 143L     | Driver        | 10000             | 200 C.T.  | 1.5               | 720                     | 9         | 30        | 2    |
| 143N     | Driver        | 10000             | 2000 C.T. | 1.5               | 720                     | 89        | 30        | 2    |
| 143R     | Driver        | 25000             | 600 C.T.  | 1                 | 1890                    | 25        | 30        | 2    |
| 144B     | Output        | 200 C.T.          | 3.2       | 10                | 10                      | 0.33      | 150       | 3    |
| 144D     | Output        | 300 C.T.          | 3.2       | 9                 | 15                      | 0.33      | 150       | 3    |
| 144F     | Output        | 500 C.T.          | 3.2       | 6                 | 27                      | 0.33      | 150       | 3    |
| 144G     | Output        | 500 C.T.          | 8         | 6                 | 27                      | 0.9       | 150       | 3    |
| 144H     | Output        | 500 C.T.          | 50        | 6                 | 28                      | 7.3       | 150       | 3    |
| 144I     | Output        | 600 C.T.          | 150 C.T.  | 6                 | 45                      | 8.2       | 150       | 4    |
| 144P     | Output        | 10000             | 3.2       | 5                 | 575                     | 0.5       | 50        | 1    |
| 144Q     | Output        | 10000             | 8         | 5                 | 575                     | 0.9       | 50        | 1    |
| 144S     | Output        | 20000             | 8         | 3.5               | 1240                    | 0.9       | 50        | 1    |
| 145A     | Driver        | 100               | 200 C.T.  | 45                | 14                      | 19        | 100       | 2    |
| 145B     | Driver-Output | 600               | 600       | 18                | 30                      | 38        | 200       | 1    |
| 145C     | Input         | 50000             | 1500 C.T. | 1                 | 2400                    | 52        | 50        | 2    |
| 145D     | Input         | 200K              | 1000      | 0.5               | 3600                    | 33        | 10        | 1    |
| 145E     | Input-Output  | 600 C.T.          | 600 C.T.  | 5                 | 65                      | 83        | 200       | 4    |
| 145F     | Driver        | 600 C.T.          | 200 C.T.  | 20                | 45                      | 9         | 135       | 4    |
| 145G     | Driver        | 2000              | 200 C.T.  | 12                | 140                     | 9         | 135       | 2    |
| 145H     | Driver        | 2000              | 500 C.T.  | 12                | 148                     | 17        | 135       | 2    |
| 145J     | Driver        | 4000              | 600 C.T.  | 8                 | 340                     | 24        | 135       | 2    |
| 145L     | Driver        | 4000              | 2600 C.T. | 8                 | 340                     | 100       | 135       | 2    |
| 145N     | Driver        | 10000             | 2000 C.T. | 5                 | 700                     | 89        | 135       | 2    |
| 145O     | Driver        | 15000             | 200 C.T.  | 4                 | 850                     | 10        | 135       | 2    |
| 145P     | Driver        | 20000             | 1000 C.T. | 3.5               | 1180                    | 50        | 135       | 2    |
| 145R     | Driver        | 20000             | 2000 C.T. | 3.5               | 1180                    | 89        | 135       | 2    |
| 146B     | Output        | 48 C.T.           | 3.2       | 20                | 2.4                     | 0.3       | 700       | 3    |
| 146C     | Output        | 48 C.T.           | 8         | 20                | 2.4                     | 0.7       | 700       | 3    |
| 146D     | Output        | 100 C.T.          | 3.2       | 14                | 4.4                     | 0.3       | 700       | 3    |
| 146E     | Output        | 100 C.T.          | 8         | 14                | 4.4                     | 0.7       | 700       | 3    |
| 146F     | Output        | 250 C.T.          | 3.2       | 8                 | 11                      | 0.3       | 700       | 3    |
| 146G     | Output        | 250 C.T.          | 8         | 8                 | 11                      | 0.7       | 700       | 3    |
| 146H     | Output        | 500 C.T.          | 3.2       | 6                 | 26                      | 0.3       | 700       | 3    |
| 146I     | Output        | 500 C.T.          | 8         | 6                 | 26                      | 0.7       | 700       | 3    |
| 146J     | Output        | 1000 C.T.         | 3.2       | 4                 | 56                      | 0.3       | 700       | 3    |
| 146K     | Output        | 1000 C.T.         | 8         | 4                 | 56                      | 0.7       | 700       | 3    |
| 146N     | Output        | 2000 C.T.         | 8         | 3                 | 97                      | 0.7       | 700       | 3    |
| 146S     | Output        | 4000 C.T.         | 8         | 2                 | 220                     | 0.7       | 700       | 3    |

### NOTES:

\*1) For output transformers this figure is maximum unbalance.

### EUROPE

Basingstoke, UK 01256 812812

### AUSTRALIA

Queenstown, Australia 61-8-8240-2244

[www.hammondmfg.com](http://www.hammondmfg.com)



### CANADA

Guelph, Ontario (519) 822-2960  
St. Laurent, Quebec (514) 343-9010

### USA

Cheektowaga, NY (716) 630-7030



Audio