

PLEASE CHECK WWW.MOLEX.COM FOR LATEST PART INFORMATION

Part Number: **0191440026**
Status: **Active**
Description: InsulKrimp™ Spade Tongue Terminal for 14-16 AWG Wire

Documents:

[Drawing \(PDF\)](#) [RoHS Certificate of Compliance \(PDF\)](#)
[Product Specification PS-19902-009 \(PDF\)](#)

Agency Certification

CSA LR18689
 UL E32244

General

Product Family Ring and Spade Terminals
 Series 19144
 Crimp Quality Equipment Yes
 Mil-Spec N/A
 Product Name InsulKrimp™
 Type Spade

Physical

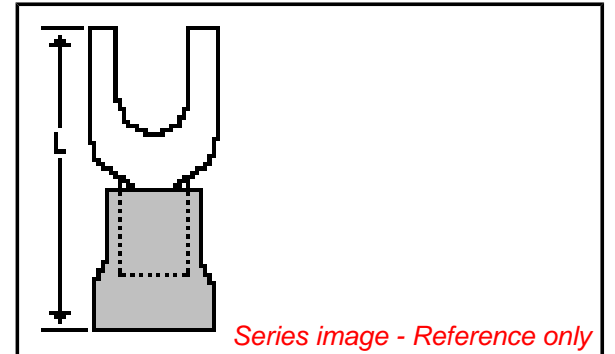
Barrel Type Closed
 Color - Resin Natural
 Flammability 94V-2
 Insulation PVC
 Material - Plating Mating Tin
 Packaging Type Bag
 Plating min: Mating (µin) 100
 Plating min: Mating (µm) 2.5
 Plating min: Termination (µin) 100
 Plating min: Termination (µm) 2.5
 Stud Size 10 (M5)
 Termination Interface: Style Crimp or Compression
 Wire Insulation Diameter 4.40mm (.175") max.
 Wire Size AWG 14, 16
 Wire Size mm² 1.30 - 2.00

Material Info

Old Part Number BB-227-10X

Reference - Drawing Numbers

Product Specification PS-19902-009
 Sales Drawing SD-19144-001



EU RoHS

ELV and RoHS Compliant
REACH SVHC
 Not Reviewed
Halogen-Free Status
Not Reviewed

China RoHS



Need more information on product environmental compliance?

Email productcompliance@molex.com
 For a multiple part number RoHS Certificate of Compliance, [click here](#)

Please visit the [Contact Us](#) section for any non-product compliance questions.

Search Parts in this Series

[19144Series](#)

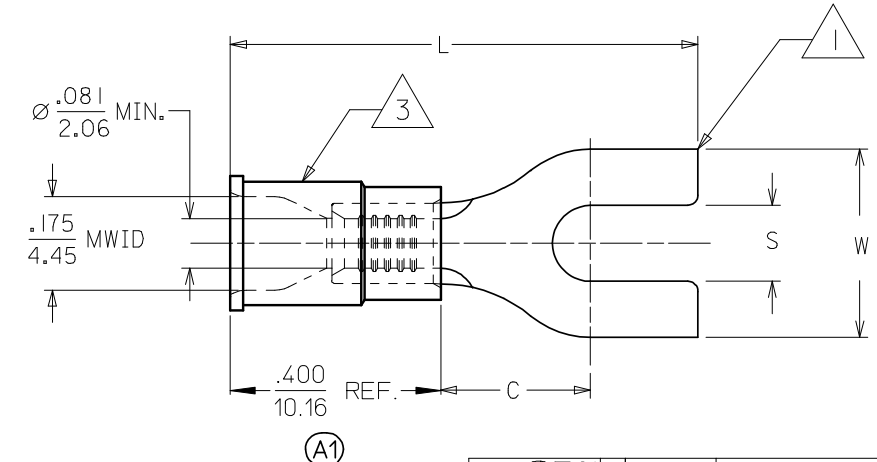
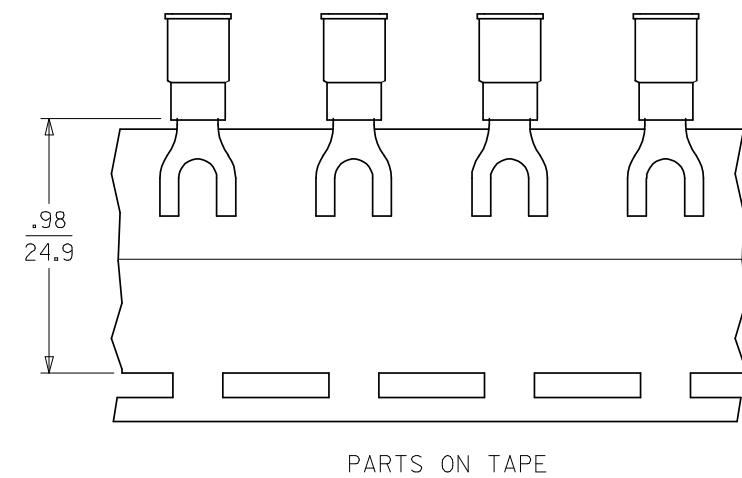
Application Tooling | FAQ

Tooling specifications and manuals are found by selecting the products below. Crimp Height Specifications are then contained in the Application Tooling Specification document.

Global

| Description | Product # |
|--|----------------------------|
| Hand Crimp Tool | 0640010100 |
| Hand Crimp Tool | 0640010300 |
| Crimp Head for the AT-200™ Pneumatic Hand Tool | 0640050100 |
| Crimp Head for the AT-200™ Pneumatic Hand Tool | 0640050300 |

| MATERIAL NUMBER | ALTERNATE NUMBER | STUD SIZE | "S" ±.005/(0.13) | "W" ±.010/(0.25) | "C" MIN (A1) | "L" MAX (A1) | PACKAGING |
|-----------------|------------------|-----------|---------------------|---------------------|-----------------|-----------------|-----------------|
| 191440013 | BB-207-04X | 4 | .119/(3.02) | .245/(6.22) | .209/(5.31) | .790/(20.07) | LOOSE PIECE |
| 191440015 | BB-207-06X | 6 | .146/(3.71) | .245/(6.22) | .209/(5.31) | .790/(20.07) | |
| 191440017 | BB-224-04X | 4 | .119/(3.02) | .295/(7.49) | .211/(5.36) | .789/(20.04) | |
| 191440018 | BB-224-06X | 6 | .146/(3.71) | .295/(7.49) | .211/(5.36) | .789/(20.04) | |
| 191440020 | BB-224-08X | 8 | .173/(4.39) | .295/(7.49) | .211/(5.36) | .789/(20.04) | |
| 191440022 | BB-227-06X | 6 | .146/(3.71) | .362/(9.19) | .269/(6.83) | .912/(23.16) | |
| 191440024 | BB-227-08X | 8 | .173/(4.39) | .388/(9.85) | .269/(6.83) | .912/(23.16) | |
| 191440026 | BB-227-10X | 10 | .198/(5.03) | .388/(9.85) | .269/(6.83) | .912/(23.16) | |
| 191440014 | BB-207-04XT | 4 | .119/(3.02) | .245/(6.22) | .209/(5.31) | .790/(20.07) | TAPE MOUNTED |
| 191440016 | BB-207-06XT | 6 | .146/(3.71) | .245/(6.22) | .209/(5.31) | .790/(20.07) | |
| 191440063 | BB-224-04XT | 4 | .119/(3.02) | .295/(7.49) | .211/(5.36) | .789/(20.04) | |
| 191440019 | BB-224-06XT | 6 | .146/(3.71) | .295/(7.49) | .211/(5.36) | .789/(20.04) | |
| 191440021 | BB-224-08XT | 8 | .173/(4.39) | .295/(7.49) | .211/(5.36) | .789/(20.04) | |
| 191440023 | BB-227-06XT | 6 | .146/(3.71) | .362/(9.19) | .269/(6.83) | .912/(23.16) | |
| 191440025 | BB-227-08XT | 8 | .173/(4.39) | .388/(9.85) | .269/(6.83) | .912/(23.16) | |
| 191440027 | BB-227-10XT | 10 | .198/(5.03) | .388/(9.85) | .269/(6.83) | .912/(23.16) | |



CUSTOMER DRAWING

- NOTES:
- MATERIAL: COPPER .031/(.79) THICK.
 - PLATING: ELECTRO-TIN.
 - INSULATION: MOLDED PVC (BLUE)
 - ALL DIMENSIONS IN INCHES/(MM).
 - MWID=MAXIMUM WIRE INSULATION DIAMETER.
 - PART IS ROHS COMPLIANT.

(A1)

| | | | | | | | | |
|---|--|--|-----------------------|---|----------------------------------|--|------------------------|--|
| CORRECT TOLERANCE EEC NO: WNA 2008-0105 DRWN: ETHRODAHL 2008/03/10 CHKD: MACNEIL 2008/03/11 APPR: MACNEIL 2008/03/12 | QUALITY SYMBOLS | GENERAL TOLERANCES (UNLESS SPECIFIED) | | DIMENSION STYLE | SCALE | DESIGN UNITS | THIRD ANGLE PROJECTION | |
| | $\blacktriangledown = 0$ $\nabla = 0$ | mm | INCH | IN/MM | 4:1 | INCH | | |
| | | 4 PLACES ± --- ± --- | 3 PLACES ± --- ± .005 | 2 PLACES ± 0.13 ± .01 | 1 PLACE ± 0.25 ± --- | DRAWN BY: HEB DATE: 1999/11/12 | | |
| | | ANGULAR ± 1/2° | | | CHECKED BY: RWD DATE: 1999/11/12 | | | |
| | | DRAFT WHERE APPLICABLE MUST REMAIN WITHIN DIMENSIONS | | APPROVED BY: RWD DATE: 1999/11/12 | | TITLE: SPADE TONGUE TERMINAL 16-14 AWG INSULKRIMP 200 SERIES | | |
| | | | | MATERIAL NO. SEE CHART | | MOLEX INCORPORATED | | |
| | | | | DOCUMENT NO. SD-19144-001 | | SHEET NO. 1 OF 1 | | |
| | | | | THIS DRAWING CONTAINS INFORMATION THAT IS PROPRIETARY TO MOLEX INCORPORATED AND SHOULD NOT BE USED WITHOUT WRITTEN PERMISSION | | | | |