

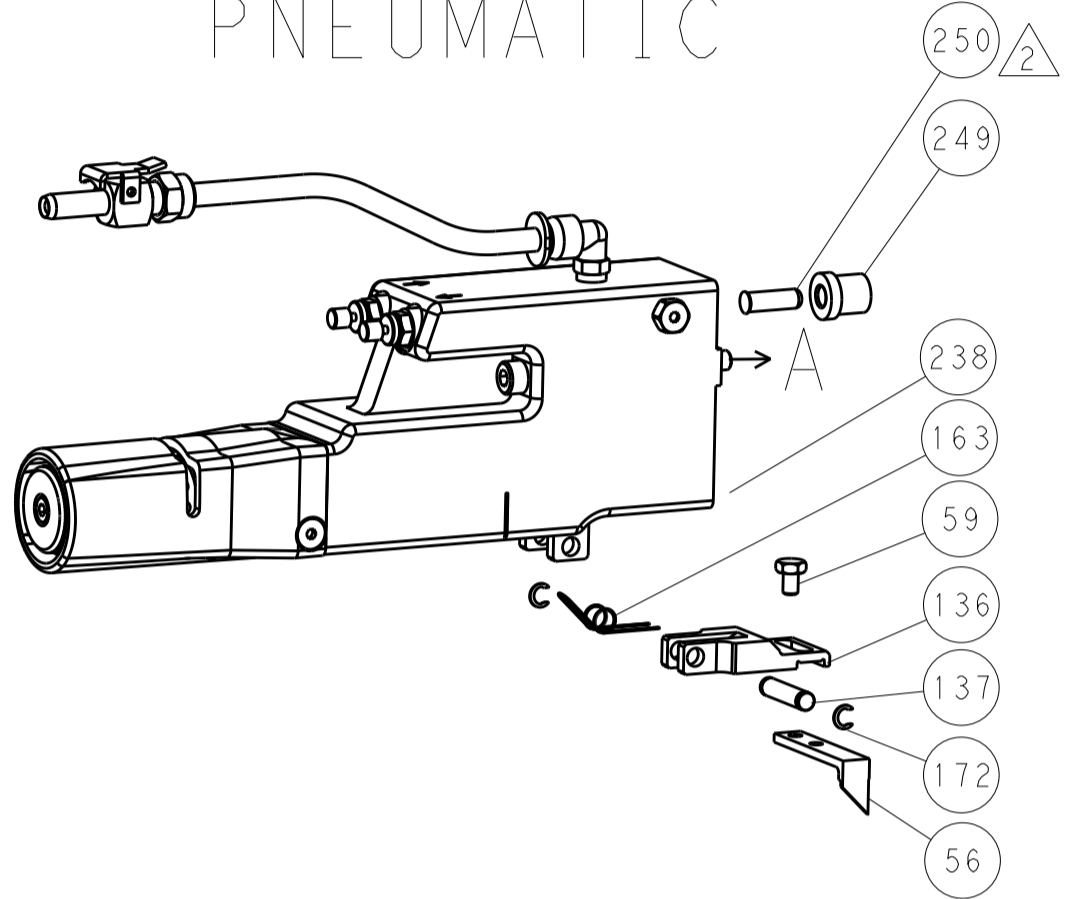


| LOC |    | DIST |     | REVISIONS   |      |     |      |
|-----|----|------|-----|-------------|------|-----|------|
| A   | 66 | P    | LTM | DESCRIPTION | DATE | OWN | APVD |
|     |    | -    |     | SEE SHEET 1 |      |     |      |

### FEED TYPE MECHANICAL



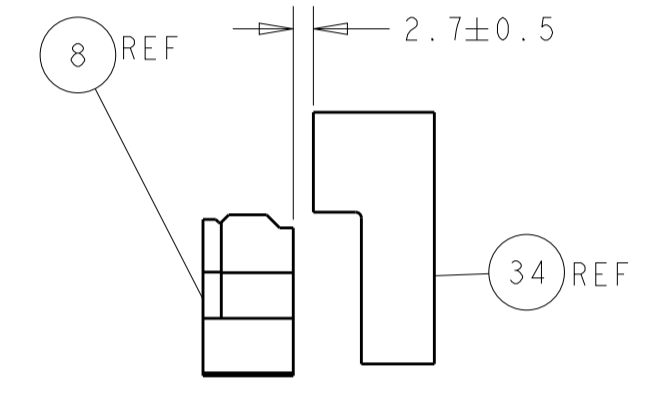
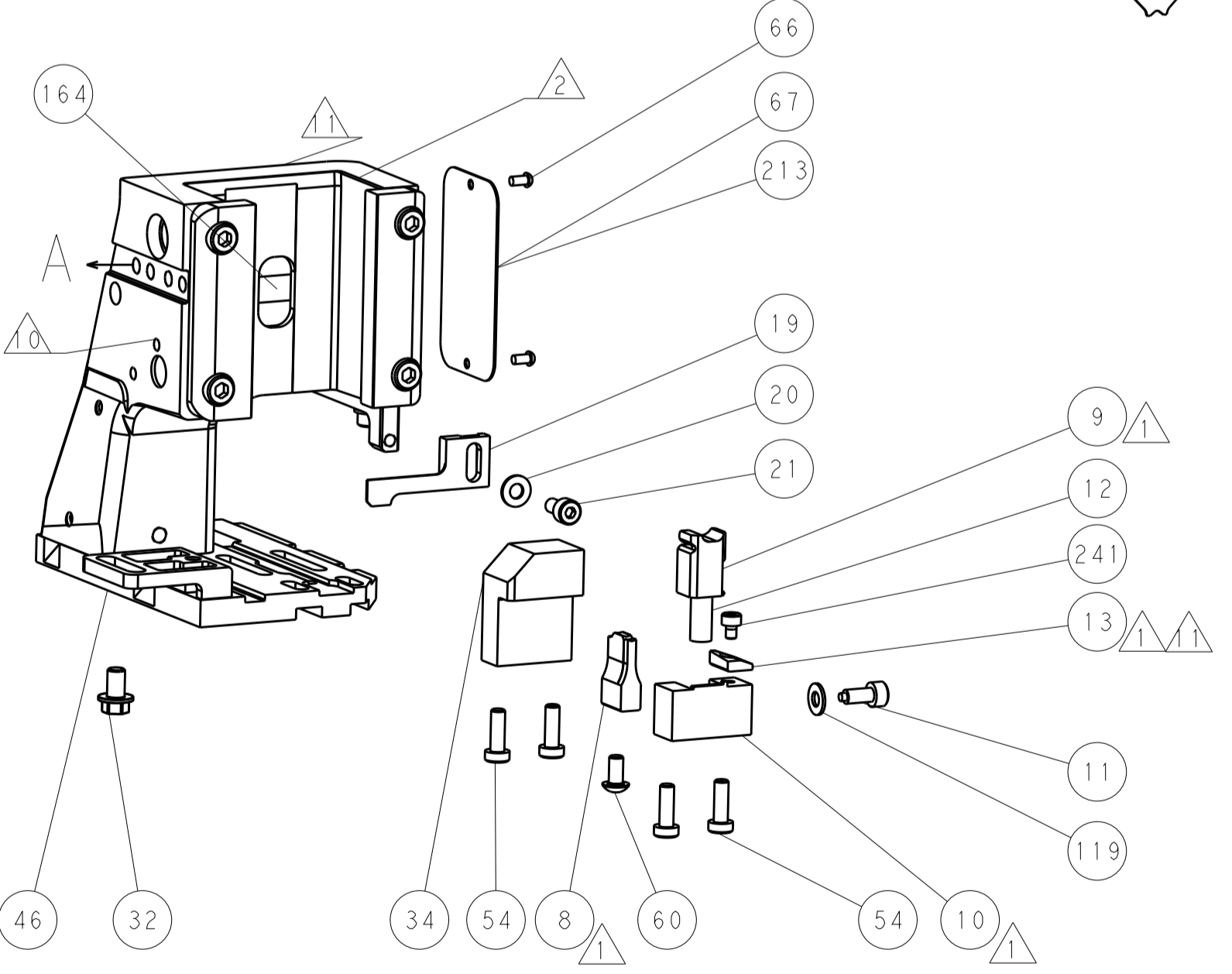
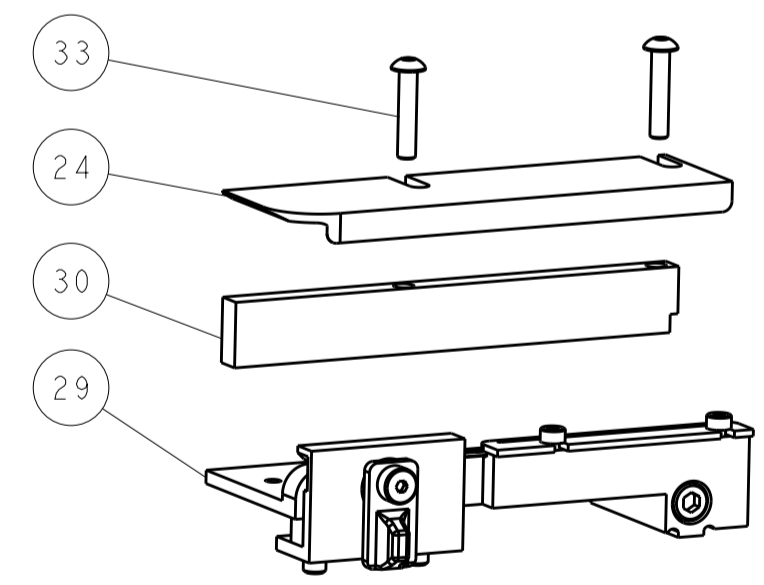
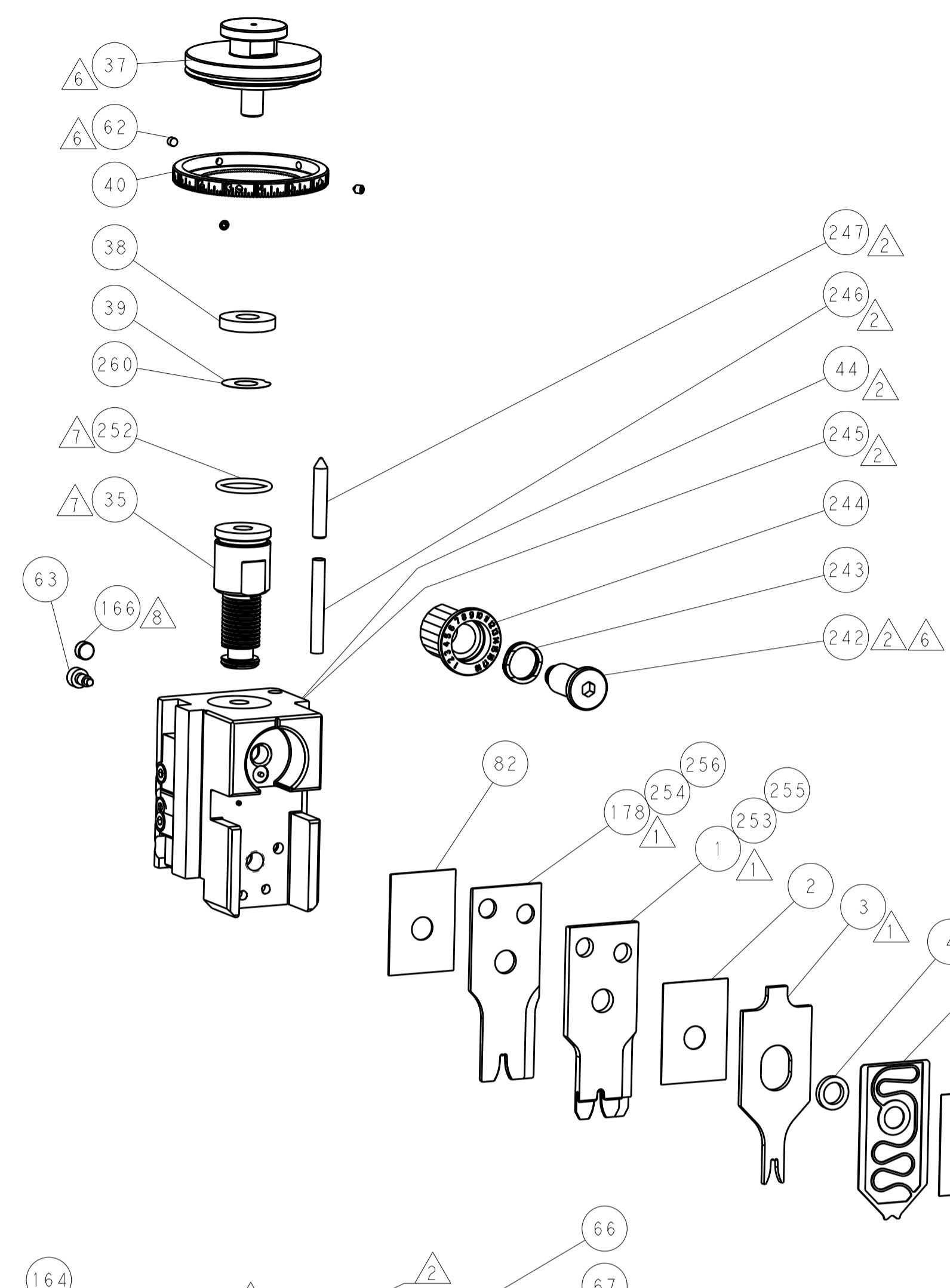
### PNEUMATIC



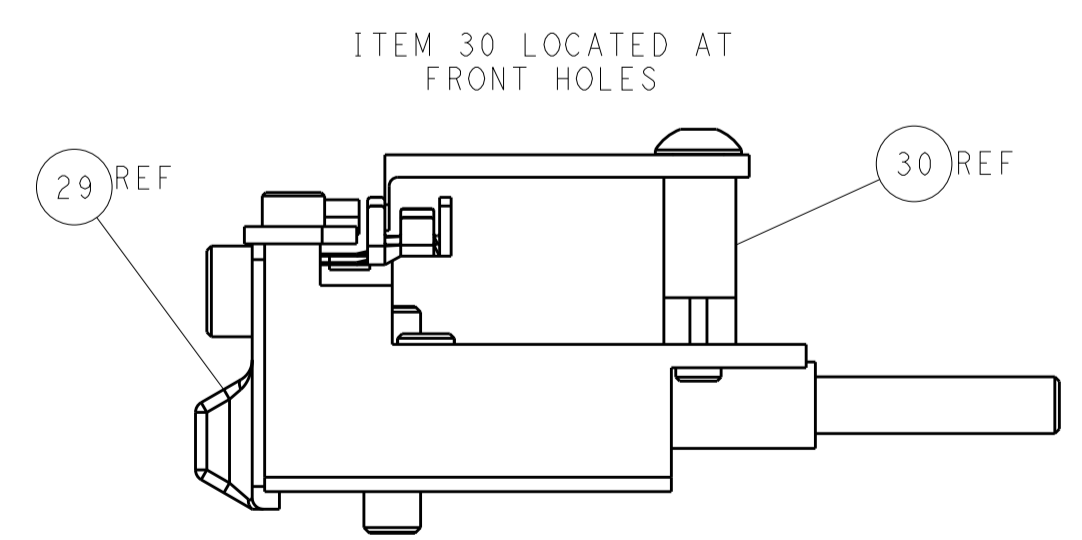
### SERVO LATCH PLATE



### CAM POSITIONS



TERMINAL SUPPORT LOCATION



FEED TRACK POSITION GUIDE BY INSULATION BARREL

**ATLANTIC VERSION**  
 Shown on sheets 1 of 4 & 2 of 4  
 (Pacific version shown on sheets 3 of 4 & 4 of 4)

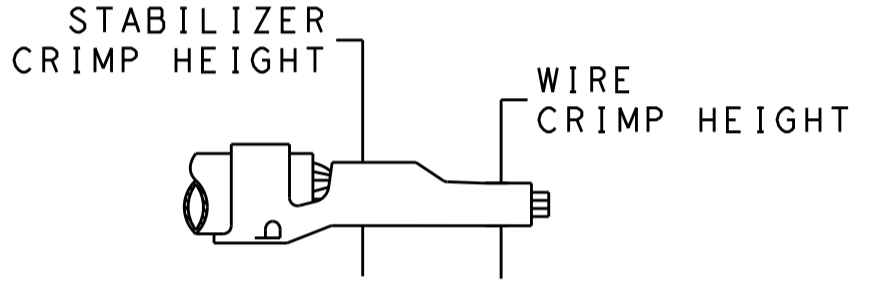
|             |        |  |  |  |   |                 |       |
|-------------|--------|--|--|--|---|-----------------|-------|
| DIMENSIONS: |        | TOLERANCES UNLESS OTHERWISE SPECIFIED: |  | DWN L. GROSS 19FEB2014                 |   | TE Connectivity |       |
| mm          | 0 PLC  | ±                                      |  | CHK T. ELBIN 19FEB2014                 | Harrisburg, PA 17105-3608               |                 |       |
|             | 2 PLC  | ±                                      |  | APVD M. CLIFFORD 19FEB2014             | NAME Ocean Side Feed                    |                 |       |
|             | 3 PLC  | ±                                      |  | PRODUCT SPEC                           | Applicator                              |                 |       |
|             | 4 PLC  | ±                                      |  | APPLICATION SPEC                       | SIZE CAGE CODE DRAWING NO RESTRICTED TO |                 |       |
|             | ANGLES | ±                                      |  | WEIGHT                                 | A11 00779 ©=2266225                     |                 |       |
| MATERIAL    | FINISH |  |  | Customer Accessible Production Drawing | SCALE 1:2                               | SHEET 2 of 4    | REV B |

| PACIFIC VERSION TERMINATOR INTERFACE ADAPTER | PART NUMBER | REVISION                    | DESCRIPTION              | FEED TYPE         | APPLICATOR STYLE CONVERSION CHART |                       |             |             |             |                        |                        |
|--|-------------|-----------------------------|--------------------------|-------------------|-----------------------------------|-----------------------|-------------|-------------|-------------|------------------------|------------------------|
|  |             |                             |                          |                   | CONVERT TO                        | PART NUMBERS REQUIRED |             |             |             |                        |                        |
|  |             |                             |                          |                   |                                   |                       |             |             |             |                        |                        |
|  | 2-2266225-1 | B                           | FINE CRIMP HEIGHT ADJUST | MECHANICAL        | PNEUMATIC FEED                    | 2119950-1             | 1338685-1   | 5-18022-5   | 2119641-2   | 2119799-1              | 2063440-1              |
|  |             |                             |                          |                   | SERVO LATCH PLATE                 | 2119951-1             | -           | 8-2266225-5 | 1901094-3   | 2-1752354-6            | 2168400-6 (QUANTITY 2) |
|  |             |                             |                          |                   | SMART APPLICATOR                  | 2161326-1             | -           | 8-2266225-4 | -           | -                      | -                      |
| 2-2266225-2                                  | B           | FINE CRIMP HEIGHT ADJUST    | PNEUMATIC                | MECHANICAL FEED   | 2119949-1                         | 1338685-1             | 5-18022-5   | 2119653-2   | -           | -                      |                        |
|  |             |                             |                          | SERVO LATCH PLATE | 2119951-1                         | -                     | 8-2266225-5 | 1901094-3   | 2-1752354-6 | 2168400-6 (QUANTITY 2) |                        |
|  |             |                             |                          | SMART APPLICATOR  | 2161326-1                         | -                     | 8-2266225-4 | -           | -           | -                      |                        |
| 2-2266225-5                                  | B           | FINE CRIMP HEIGHT ADJUST    | SERVO LATCH PLATE        | MECHANICAL FEED   | 2119949-1                         | 1338685-1             | 5-18022-5   | 2119653-2   | -           | -                      |                        |
|  |             |                             |                          | PNEUMATIC FEED    | 2119950-1                         | 1338685-1             | 5-18022-5   | 2119641-2   | 2119799-1   | 2063440-1              |                        |
| 2-2266225-7                                  | B           | FINE CRIMP HEIGHT ADJUST    | NONE                     | -                 | -                                 | -                     | -           | -           | -           | -                      |                        |
| 7-2266225-*                                  | -           | SEE CRIMP TOLING KITS BELOW | -                        | -                 | -                                 | -                     | -           | -           | -           | -                      |                        |

| APPLICATOR DATA                                   |                |      |
|---|----------------|------|
| CRIMP   | SIZE           | TYPE |
| WIRE  | 2.79 mm [.110] | F    |
| STABILIZER  | 2.79 mm [.110] | O    |
| INSULATION  | 2.79 mm [.110] | SC   |
| APPLICATOR INSTRUCTIONS<br>DWG_APP_INSTRUCTIONS:2 |                |      |

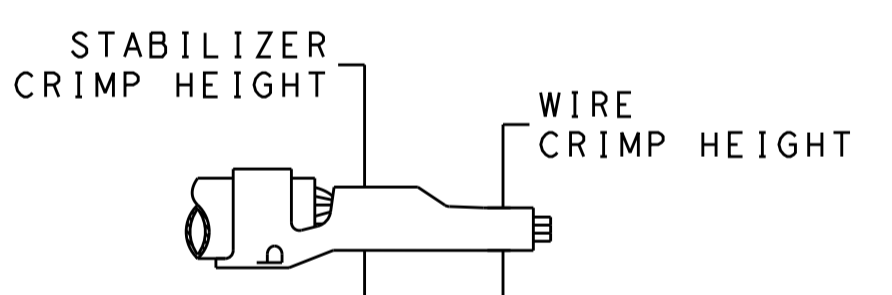
| PART NO     | REV | WIRE SIZE | WIRE CRIMPER | STABILIZER CRIMPER | INSULATION CRIMPER | ANVIL       |
|-------------|-----|-----------|--------------|--------------------|--------------------|-------------|
| 7-2266225-7 | B   | 12 AWG    | 7-456408-6   | 815664-2           | 1803146-3          | 1-1633923-1 |
| 7-2266225-8 | B   | 14 AWG    | 2-456408-5   | 815664-6           | 1803146-3          | 1-1633923-1 |
| 7-2266225-9 | B   | 18-16 AWG | 2-456408-6   | 815664-7           | 1803146-3          | 1-1633923-1 |

| TERMINAL DATA: TE TERMINAL         |             | TE CRIMP SPECIFICATION       |             |
|------------------------------------|-------------|------------------------------|-------------|
| TERMINAL NAME: AMP-IN              |             |                              |             |
| WIRE STRIP LENGTH                  |             | INSULATION DIAMETER RANGE    |             |
| 4.83-5.59 mm [.190-.220 IN]        |             | Ø2.29-2.54 mm [.090-.100 IN] |             |
| TERMINAL APPLICATION SPECIFICATION | 114-1016    | -                            | -           |
| TERMINALS APPLIED                  |             |                              |             |
| TE TERMINAL                        | TE TERMINAL | TE TERMINAL                  | TE TERMINAL |
| 3-794013-1                         |             |                              |             |



| WIRE SIZE | CRIMP HEIGHT mm [INCH]     | WIRE CRIMPER PART NUMBER | STABILIZER CRIMP HEIGHT mm [INCH] | STABILIZER CRIMPER PART NUMBER | CRIMP HEIGHT REFERENCE SETTING |
|-----------|----------------------------|--------------------------|-----------------------------------|--------------------------------|--------------------------------|
| 12 AWG    | 2.16+/-0.05 [.085+/-0.002] | 7-456408-6               | 2.79+/-0.05 [.110+/-0.002]        | 815664-2                       | 9.1                            |

| TERMINAL DATA: TE TERMINAL         |             | TE CRIMP SPECIFICATION       |             |
|------------------------------------|-------------|------------------------------|-------------|
| TERMINAL NAME: AMP-IN              |             |                              |             |
| WIRE STRIP LENGTH                  |             | INSULATION DIAMETER RANGE    |             |
| 4.83-5.59 mm [.190-.220 IN]        |             | Ø2.29-2.54 mm [.090-.100 IN] |             |
| TERMINAL APPLICATION SPECIFICATION | 114-1016    | -                            | -           |
| TERMINALS APPLIED                  |             |                              |             |
| TE TERMINAL                        | TE TERMINAL | TE TERMINAL                  | TE TERMINAL |
| 3-770060-1                         |             |                              |             |



| WIRE SIZE | CRIMP HEIGHT mm [INCH]     | WIRE CRIMPER PART NUMBER | STABILIZER CRIMP HEIGHT mm [INCH] | STABILIZER CRIMPER PART NUMBER | CRIMP HEIGHT REFERENCE SETTING |
|-----------|----------------------------|--------------------------|-----------------------------------|--------------------------------|--------------------------------|
| 14 AWG    | 1.40+/-0.05 [.055+/-0.002] | 2-456408-5               | 2.75+/-0.10 [.108+/-0.004]        | 815664-6                       | 7.6                            |
| 18-16 AWG | 1.09+/-0.05 [.043+/-0.002] | 2-456408-6               | 2.40+/-0.10 [.094+/-0.004]        | 815664-7                       | 7.8                            |

- RECOMMENDED SPARE PARTS
- GREASE BEARING SURFACES LIGHTLY
- LUBRICATE DAILY PER THE APPLICATOR INSTRUCTION SHEET SUPPLIED WITH THE APPLICATOR.
- APPLICATOR SPECIFIC DATA TO BE ENTERED INTO BLANK MEMORY CHIP AT ASSEMBLY. SEE BELOW FOR PART NUMBER:  
 MECHANICAL FEED WITH "SMART APPLICATOR" CONVERSION: 8-2266225-4  
 PNEUMATIC FEED WITH "SMART APPLICATOR" CONVERSION: 8-2266225-4  
 SERVO FEED WITH "FINE CRIMP HEIGHT ADJUST": 8-2266225-5
- ADJUSTMENT OF THE STRIPPER MAY BE REQUIRED WHEN MOVING THE APPLICATOR BETWEEN BENCH AND LEADMAKER APPLICATIONS.
- APPLY PART NUMBER 1-23419-5 LOCTITE TO THREADS OF ITEMS 62.  
 APPLY PART NUMBER 2-23419-6 LOCTITE TO THREADS OF ITEMS 242.
- GREASE THREADS, GROOVE AND O-RING ON ITEMS 139 & 152.

- MAGNET MUST BE ORIENTED CORRECTLY IN ORDER TO PROPERLY ACTUATE THE COUNTER.
- CRIMP HEIGHT REFERENCE SETTING WAS THE SETTING USED WHEN THE APPLICATOR WAS QUALIFIED AT THE FACTORY. ADJUSTMENT MAY BE NECESSARY WHEN RUNNING APPLICATOR IN THE FIELD.
- SPARE FEED CAM STORAGE LOCATION REFER TO INSTRUCTION SHEET FOR ADDITIONAL INFORMATION.
- TO CONVERT THE APPLICATOR TO A NON-CARRIER CUTTING STYLE, REMOVE ITEM 13 AND ATTACH TO THE LOCATION ON BACK SIDE OF THE HOUSING. REFER TO INSTRUCTION SHEET FOR ADDITIONAL INFORMATION.
- ITEMS 1 & 178 TO BE USED WITH 12 AWG ONLY. ITEMS TO BE SHIPPED WITH APPLICATOR.
- ITEMS 253 & 254 TO BE USED WITH 14 AWG ONLY. ITEMS TO BE SHIPPED WITH APPLICATOR.
- ITEMS 255 & 256 TO BE USED WITH 18-16 AWG ONLY. APPLICATOR TO BE SET UP WITH THESE ITEMS.
- THIS APPLICATOR APPLIES SCROLL INSULATION CRIMP DUE TO RESTRICTED INSULATION DIAMETER RANGE.

**\*WARNING**  
 ON INSTALLATION, SET WIRE DISC, ITEM 40 TO LARGEST WIRE SIZE SETTING. USE OF SETTINGS BELOW MINIMUM REQUIRED CRIMP HEIGHT SETTING WILL CAUSE DAMAGE TO CRIMP TOOLING.

| 1   | -   | -   | 1   | 1   | 1   | 1   | 2-456408-6 | CRIMPER, WIRE PREMIUM | 256     |
|-----|-----|-----|-----|-----|-----|-----|------------|-----------------------|---------|
| -79 | -78 | -77 | -27 | -25 | -22 | -21 | PART NO    | DESCRIPTION           | ITEM NO |

**PACIFIC VERSION**  
 Shown on sheets 3 of 4 & 4 of 4  
 (Atlantic version shown on sheets 1 of 4 & 2 of 4)

| SET UP GAUGE | LOC | DIST | REVISIONS |             |    |      |
|--------------|-----|------|-----------|-------------|----|------|
| 2119599-1    | A   | 66   | REV       | DATE        | BY | APPV |
|              |     |      | -         | SEE SHEET 1 | -  | -    |

| REV | DATE | BY | APPV | DESCRIPTION | ITEM NO |             |                                     |                          |     |
|-----|------|----|------|-------------|---------|-------------|-------------------------------------|--------------------------|-----|
| 1   | -    | -  | 1    | 1           | 1       | 815664-7    | CRIMPER, WIRE-O                     | 255                      |     |
| 2   | -    | 1  | 1    | 1           | 1       | 2-456408-5  | CRIMPER, WIRE PREMIUM               | 254                      |     |
| 3   | -    | 1  | 1    | 1           | 1       | 815664-6    | CRIMPER, WIRE-O                     | 253                      |     |
| 4   | -    | -  | 1    | 1           | 1       | 2119782-1   | FINE ADJUST HEAD ASM, PACIFIC STYLE | 251                      |     |
| 5   | -    | -  | -    | 1           | -       | 2119640-1   | PUSH ROD, AIR FEED                  | 250                      |     |
| 6   | -    | -  | -    | -           | 1       | 2079988-1   | BUSHING, LCH5-12, MISUMI            | 249                      |     |
| 7   | -    | -  | -    | 1           | 1       | 1-22279-3   | SPRING, COMPRESSION                 | 246                      |     |
| 8   | -    | -  | 1    | 1           | 1       | 2119082-6   | CAM, SNAIL, INSULATION ADJUSTMENT   | 244                      |     |
| 9   | -    | -  | 1    | 1           | 1       | 2079764-1   | WASHER, WAVE SPRING, CREST-TO-CREST | 243                      |     |
| 10  | -    | -  | -    | 1           | 1       | 2119083-1   | RETAINER, INSULATION DIAL           | 242                      |     |
| 11  | -    | -  | -    | 1           | 1       | 7-18023-7   | SCR, SKT HD CAP M3 X 4.0            | 241                      |     |
| 12  | -    | -  | -    | 2           | -       | 2168400-6   | SHCS, LOW HEAD, RoHS, M5 X 16       | 240                      |     |
| 13  | -    | -  | -    | -           | 1       | 2119580-1   | MECHANICAL FEED ASSEMBLY            | 239                      |     |
| 14  | -    | -  | -    | -           | 1       | 2063440-1   | AIR FEED MODULE                     | 238                      |     |
| 15  | -    | -  | -    | -           | -       | 2119740-2   | TAG, IDENTIFICATION                 | 213                      |     |
| 16  | -    | -  | -    | -           | -       | 1901094-3   | SPACER, FEEDER                      | 198                      |     |
| 17  | -    | -  | 1    | 1           | 1       | 7-456408-6  | CRIMPER, WIRE PREMIUM               | 178                      |     |
| 18  | -    | -  | -    | -           | 2       | 21045-3     | RING, RETAIN, EXTERN, 3/16 CRESCENT | 172                      |     |
| 19  | -    | -  | -    | 1           | 1       | 994969-1    | MAGNET, RARE EARTH HIGH ENERGY      | 166                      |     |
| 20  | -    | -  | REF  | REF         | REF     | 994970-2    | COUNTER, MAGNETIC                   | 164                      |     |
| 21  | -    | -  | -    | -           | 1       | 240638-1    | SPRING, FEED FINGER                 | 163                      |     |
| 22  | -    | -  | -    | 1           | 1       | 8-21084-1   | O-RING, .801 ID, .070 DIA. MAT.     | 152                      |     |
| 23  | -    | -  | -    | -           | 1       | 2119641-2   | FEED CAM, AIR FEED                  | 151                      |     |
| 24  | -    | -  | -    | 1           | 1       | 2119798-2   | DETENT PIN                          | 145                      |     |
| 25  | -    | -  | -    | 1           | 1       | 2079383-8   | SCR, BHSC, RoHS (M4 X 16)           | 144                      |     |
| 26  | -    | -  | -    | 4           | 4       | 2168400-5   | SHCS, LOW HEAD, RoHS, M4 X 20       | 143                      |     |
| 27  | -    | -  | -    | -           | 1       | 2119653-2   | FEED CAM, POST FEED                 | 142                      |     |
| 28  | -    | -  | -    | 1           | 1       | 1-2119656-0 | APPLICATOR BASIC ASSEMBLY, SF       | 141                      |     |
| 29  | -    | -  | -    | 1           | 1       | 2119650-1   | RAM, ASIAN STYLE, SIDE FEED         | 140                      |     |
| 30  | -    | -  | -    | 1           | 1       | 2119092-2   | BOLT, ADJUSTMENT                    | 139                      |     |
| 31  | -    | -  | -    | -           | 1       | 3-23627-7   | PIN, RETAIN, GRVD, 3/16 X .854      | 137                      |     |
| 32  | -    | -  | -    | -           | 1       | 2119799-1   | HOLDER, FEED FINGER, AF             | 136                      |     |
| 33  | -    | -  | -    | REF         | -       | -           | SEE NOTE 4                          | MEMORY CHIP, PROGRAMMED  | 135 |
| 34  | -    | -  | -    | -           | 1       | 1633743-1   | SERVO FEED LATCH ASM                | 133                      |     |
| 35  | -    | -  | -    | 1           | 1       | 1-18028-2   | WASHER, FLAT, REG M4                | 119                      |     |
| 36  | -    | -  | -    | REF         | -       | -           | SEE NOTE 4                          | FEED FINGER ASSEMBLY, SF | 117 |
| 37  | -    | -  | -    | 1           | 1       | 455888-5    | SPACER, CRIMPER                     | 82                       |     |
| 38  | -    | -  | -    | 1           | 1       | 2119956-1   | DOCUMENTATION PACKAGE               | 71                       |     |
| 39  | -    | -  | -    | 1           | 1       | 2119791-9   | DEPRESSOR, WIRE                     | 70                       |     |
| 40  | -    | -  | -    | 1           | 1       | 2119740-1   | TAG, IDENTIFICATION                 | 67                       |     |
| 41  | -    | -  | -    | 2           | 2       | 2168078-1   | SCREW, DRIVE, RH, RoHS, 2 x .188    | 66                       |     |
| 42  | -    | -  | -    | 1           | 1       | 2119793-1   | LIMITER, ADJUSTMENT BOLT            | 63                       |     |
| 43  | -    | -  | -    | 3           | 3       | 992763-5    | SCR, SET, SOC, CONE POINT, M3 x 4.0 | 62                       |     |
| 44  | -    | -  | -    | -           | 1       | 5-18022-5   | SCR, HEX HD CAP, M4 X 6.0           | 59                       |     |
| 45  | -    | -  | -    | -           | 1       | 1338685-1   | PAWL, FEED                          | 56                       |     |
| 46  | -    | -  | -    | -           | 1       | 18023-9     | SCR, SKT HD CAP M4 X 6.0            | 49                       |     |
| 47  | -    | -  | -    | -           | 1       | 2119652-1   | FEED CAM, PRE FEED                  | 48                       |     |
| 48  | -    | -  | -    | 1           | 1       | 2079383-7   | SCR, BHSC, RoHS (M8 X 25)           | 41                       |     |
| 49  | -    | -  | -    | -           | 1       | 2119645-1   | DISC, NUMBERED FA WIRE ADJUSTMENT   | 40                       |     |
| 50  | -    | -  | -    | 1           | 1       | 2119957-1   | APPLICATOR SHIM PACK                | 39                       |     |
| 51  | -    | -  | -    | 1           | 1       | 2119644-5   | RAM WASHER, PRECISION               | 38                       |     |
| 52  | -    | -  | -    | -           | 1       | 469465-4    | STOP, WIRE                          | 34                       |     |
| 53  | -    | -  | -    | 2           | 2       | 2079383-5   | SCR, BHSC, RoHS (M4 X 20)           | 33                       |     |
| 54  | -    | -  | -    | 1           | 1       | 2161328-1   | HEX HEAD, FLANGED, M5 x 8mm LONG    | 32                       |     |
| 55  | -    | -  | -    | 1           | 1       | 1-1320908-0 | SPACER, STRIP GUIDE                 | 30                       |     |
| 56  | -    | -  | -    | 1           | 1       | 2119959-1   | ASSEMBLY, STRIP GUIDE               | 29                       |     |
| 57  | -    | -  | -    | 1           | 1       | 455888-3    | SPACER, CRIMPER                     | 28                       |     |
| 58  | -    | -  | -    | 1           | 1       | 1320928-2   | STRIP GUIDE                         | 24                       |     |
| 59  | -    | -  | -    | 1           | 1       | 2168083-2   | SCR, SKT HD CAP, RoHS, M4 X 8.0     | 21                       |     |
| 60  | -    | -  | -    | 1           | 1       | 1-18028-2   | WASHER, FLAT, REG M4                | 20                       |     |
| 61  | -    | -  | -    | 1           | 1       | 2119533-3   | STRIPPER, SIDE FEED                 | 19                       |     |
| 62  | -    | -  | -    | 1           | 1       | 2119806-1   | INSERT, SHEAR                       | 13                       |     |
| 63  | -    | -  | -    | 1           | 1       | 3-22280-3   | SPRING, COMPRESSION                 | 12                       |     |
| 64  | -    | -  | -    | 1           | 1       | 1-356885-4  | STOP, SHEAR                         | 11                       |     |
| 65  | -    | -  | -    | 1           | 1       | 2119805-1   | SHEAR HOLDER, FRONT                 | 10                       |     |
| 66  | -    | -  | -    | 1           | 1       | 462006-6    | FLOATING SHEAR, FRONT               | 9                        |     |
| 67  | 1    | 1  | 1    | 1           | 1       | 1-1633923-1 | ANVIL, COMBINATION                  | 8                        |     |
| 68  | -    | -  | -    | -           | -       | -           | -                                   | 7                        |     |
| 69  | -    | -  | -    | -           | -       | -           | -                                   | 6                        |     |
| 70  | -    | -  | -    | 1           | 1       | 1-2119757-0 | DEPRESSOR, SHEAR                    | 5                        |     |
| 71  | -    | -  | -    | 1           | 1       | 238011-8    | BLOCK, CRIMPER SPACER               | 4                        |     |
| 72  | 1    | 1  | 1    | 1           | 1       | 1803146-3   | CRIMPER, INSULATION, SCROLL         | 3                        |     |
| 73  | -    | -  | -    | 1           | 1       | 455888-3    | SPACER, CRIMPER                     | 2                        |     |
| 74  | -    | -  | -    | 1           | 1       | 815664-2    | CRIMPER, WIRE-O                     | 1                        |     |

| DATE      | BY  | APPV     | DESCRIPTION |
|-----------|-----|----------|-------------|
| 19FEB2014 | ELB | T        | GROSS       |
| 19FEB2014 | T   | ELB      | ELB         |
| 19FEB2014 | M   | CLIFFORD | CLIFFORD    |

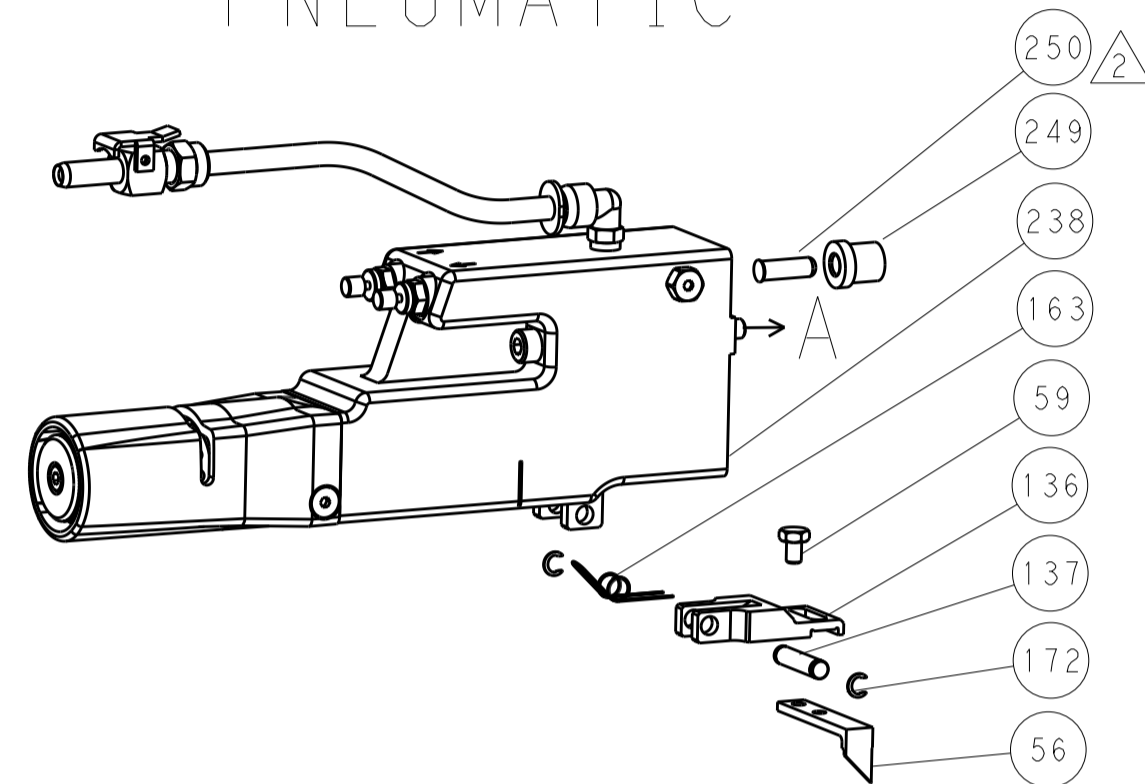
| STE                                    | TE Connectivity |
|--|-----------------|
| Harrisburg, PA 17105-3608              |                 |
| Ocean Side Feed Applicator             |                 |
| SIZE                                   | CAGE CODE       |
| A1                                     | 00779           |
| Customer Accessible Production Drawing |                 |
| SCALE                                  | SHEET           |
| 1:2                                    | 3 OF 4          |
| REV                                    | B               |

| LOC |    | DIST |     | REVISIONS   |      |     |      |
|-----|----|------|-----|-------------|------|-----|------|
| A   | 66 | P    | LTM | DESCRIPTION | DATE | OWN | APVD |
|     |    | -    | -   | SEE SHEET 1 | -    | -   | -    |

# FEED TYPE MECHANICAL



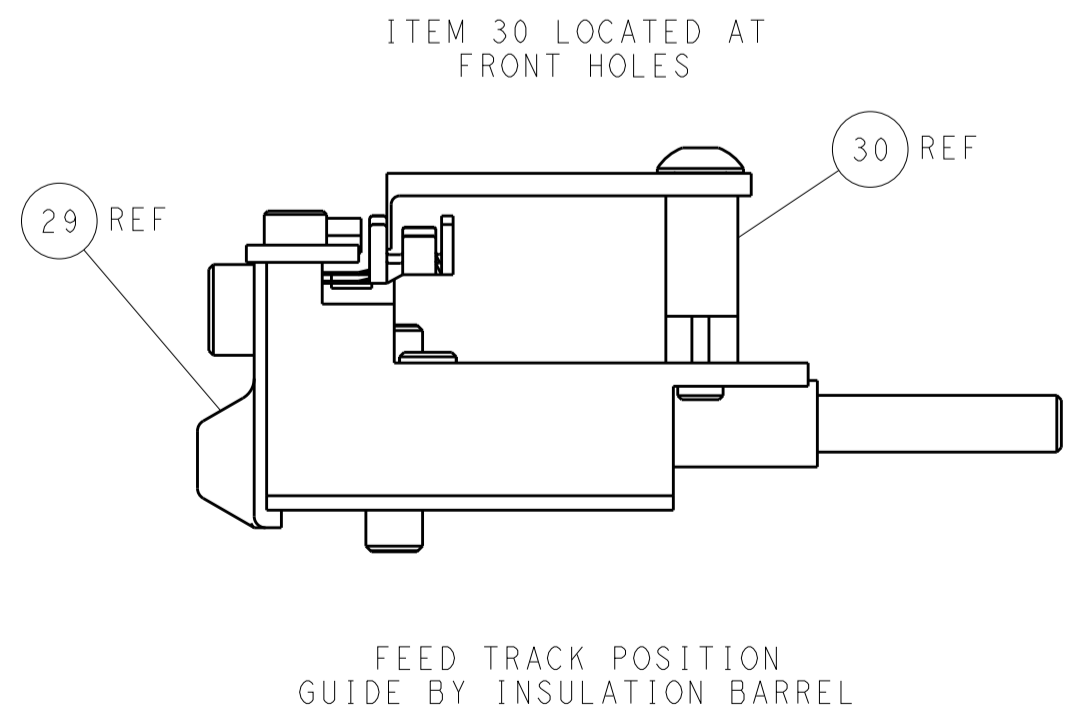
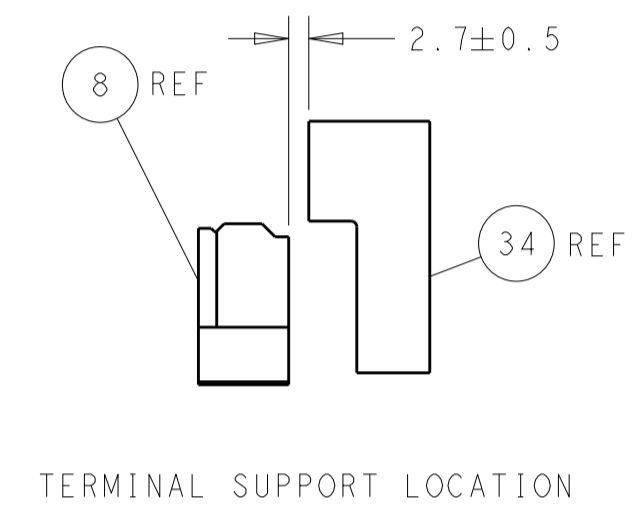
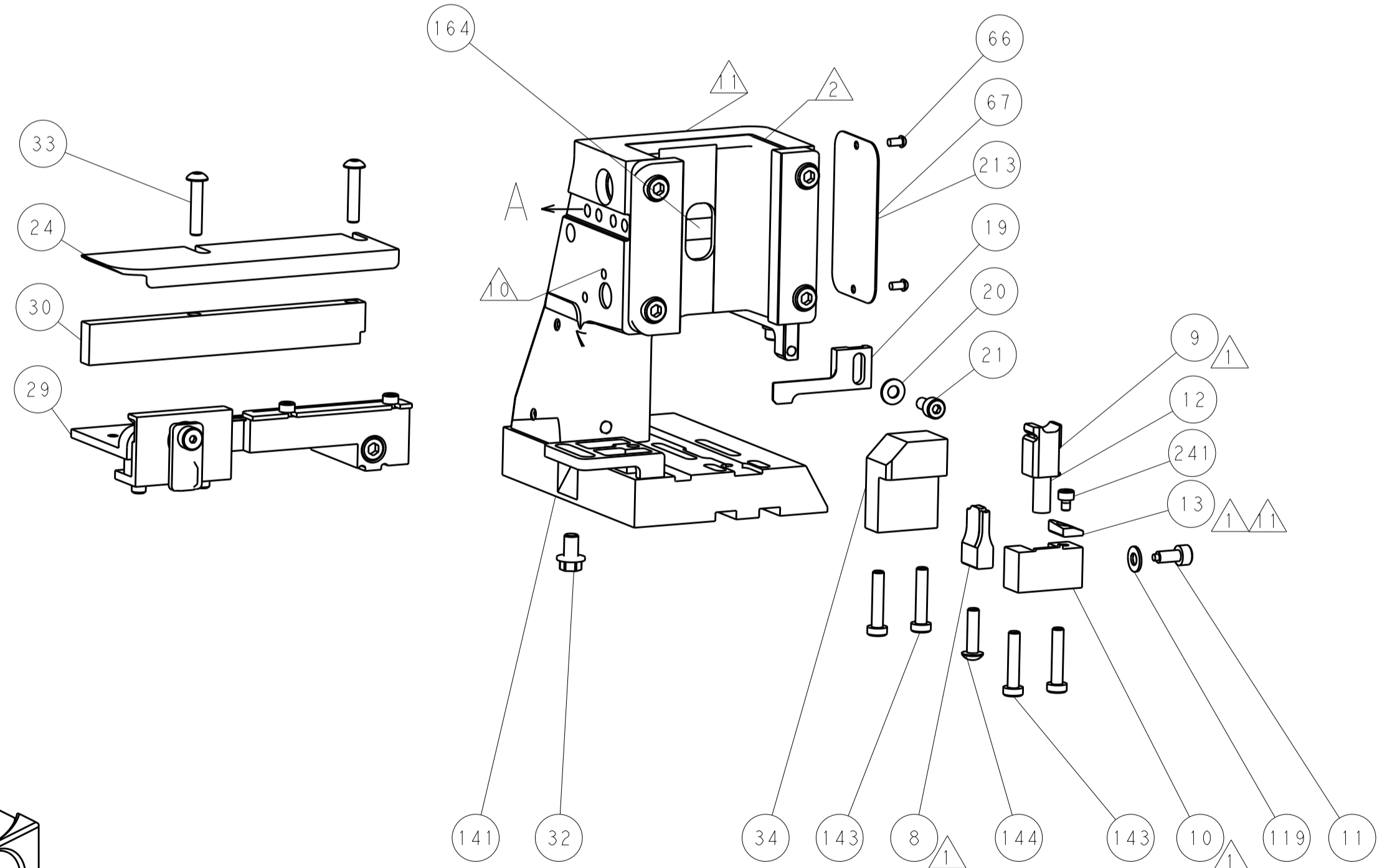
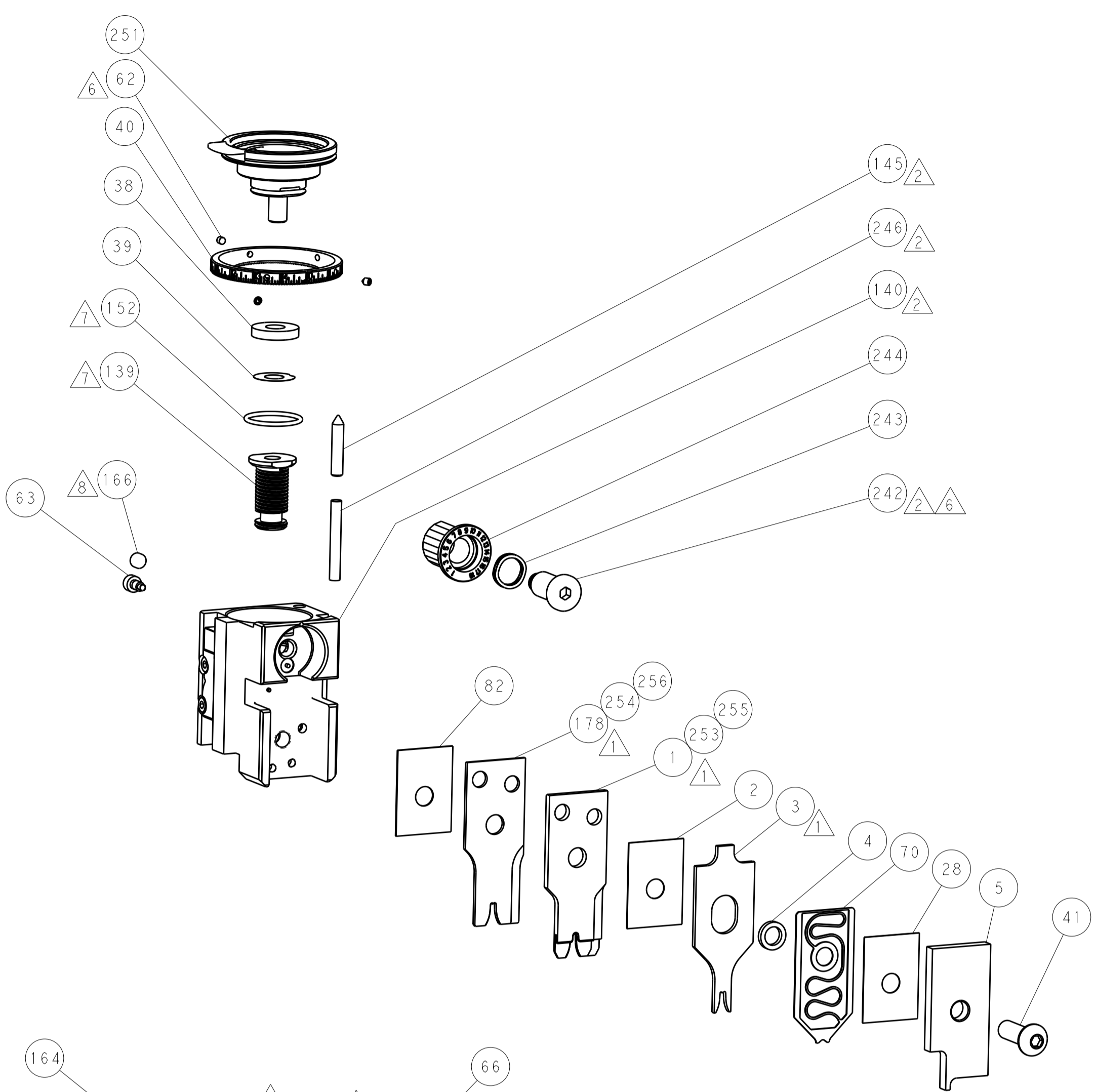
# PNEUMATIC



# SERVO LATCH PLATE



# CAM POSITIONS



**PACIFIC VERSION**  
 Shown on sheets 3 of 4 & 4 of 4  
 (Atlantic version shown on sheets 1 of 4 & 2 of 4)

|             |        |  |  |                         |           |                         |               |   |  |
|-------------|--------|--|--|-------------------------|-----------|-------------------------|---------------|---|--|
| DIMENSIONS: |        | TOLERANCES UNLESS OTHERWISE SPECIFIED: |  | DWN: L. GROSS 19FEB2014 |           | REV: T. ELBIN 19FEB2014 |               | NAME: Ocean Side Feed Applicator                  |  |
| mm          | 0 PLC  | ±                                      |  | SIZE                    | CAGE CODE | DRAWING NO              | RESTRICTED TO | STE TE Connectivity Harrisburg, PA 17105-3608     |  |
|             | 1 PLC  | ±                                      |  | SCALE                   | 00779     | ©=2266225               |               | Customer Accessible Production Drawing            |  |
|             | 2 PLC  | ±                                      |  | SCALE                   | 1:2       | SHEET 4 OF 4            | REV B         | SHEETS 1 & 2 ARE NOT REQUIRED FOR PACIFIC VERSION |  |
|             | 3 PLC  | ±                                      |  |                         |           |                         |               |   |  |
|             | 4 PLC  | ±                                      |  |                         |           |                         |               |   |  |
|             | ANGLES | ±                                      |  |                         |           |                         |               |   |  |
| MATERIAL    | FINISH |  |  |                         |           |                         |               |   |  |