

Features

- Overvoltage/lightning protection to BELLCORE GR-1089
- Typical application is secondary protection on telecom line cards

4A08P-505-RC - Surge Line Protection Module

Matched Pair of Resistors

Electrical Characteristics

Resistance Values (R1 = R2).....	10 - 100 Ω
Resistance Tolerance.....	$\pm 5\%$
TCR.....	100 ppm/ $^{\circ}\text{C}$
Ratio Tolerance.....	$\pm 1\%$
Temperature Range.....	-40 $^{\circ}\text{C}$ to +85 $^{\circ}\text{C}$

Physical Characteristics

Body Style.....	Open Frame SIP
Substrate Material.....	96 % Alumina
Lead Frame Material.....	Copper, solder coated
Flammability.....	Conforms to UL94V-0

Functional Characteristics (per Bellcore GR-1089)

First Level Lightning Surge -

Resistors will remain within tolerance after testing.

1000 Volts Peak, 100 Amp Peak Current,	
Max. Rise/Min. Decay Time 10x1000 μs ,	
60 Seconds Between Pulses:	
Number of Pulses.....	.25 each resistor each polarity
	.25 simultaneous each polarity

2500 Volts Peak, 500 Amp Peak Current,	
Max. Rise/Min. Decay Time 2x10 μs ,	
60 Seconds Between Pulses:	
Number of Pulses.....	10 simultaneous each polarity

First Level AC Power Fault -

Resistors will remain within tolerance after testing.

50 Vrms, 0.33 Amp Short Circuit Current:	
Duration.....	15 minutes
100 Vrms, 0.17 Amp Short Circuit Current:	
Duration.....	15 minutes
600 Vrms, 1.00 Amp Short Circuit Current:	
Duration.....	.60 One-second pulses

Second Level Lightning Surge -

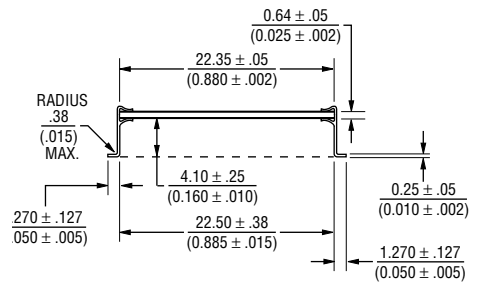
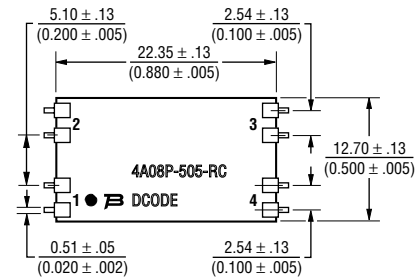
Resistor package must fail safely causing no fire, electrical, or fragmentation hazard.

5000 Volts Peak, 500 Amp Peak Current,	
Max. Rise/Min. Decay Time 2x10 μs :	
Number of Pulses.....	1 simultaneous each polarity

Second Level AC Power Fault -

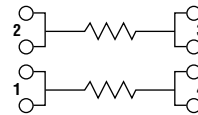
Resistor package must fail safely causing no fire, electrical, or fragmentation hazard.

Product Dimensions



DIMENSIONS: $\frac{\text{MILLIMETERS}}{\text{(INCHES)}}$

Electrical Schematic



How To Order

Model 4A 08 P - 505 - XXX

(4A = Surface Mount)

Number of Pins _____

Physical Configuration _____

Electrical Configuration _____
505 = Matched pair of resistors

Resistance Code _____
• 500 = 50 Ω



Reliable Electronic Solutions

Asia-Pacific: TEL +886- (0)2 25624117 • FAX +886- (0)2 25624116

Europe: TEL +41-41 7685555 • FAX +41-41 7685510

North America: TEL +1-909 781-5500 • FAX +1-909 781-5700

bourns.com