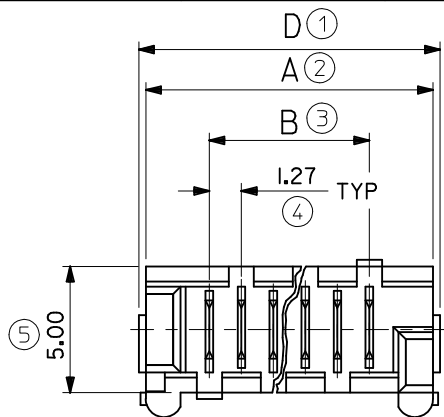
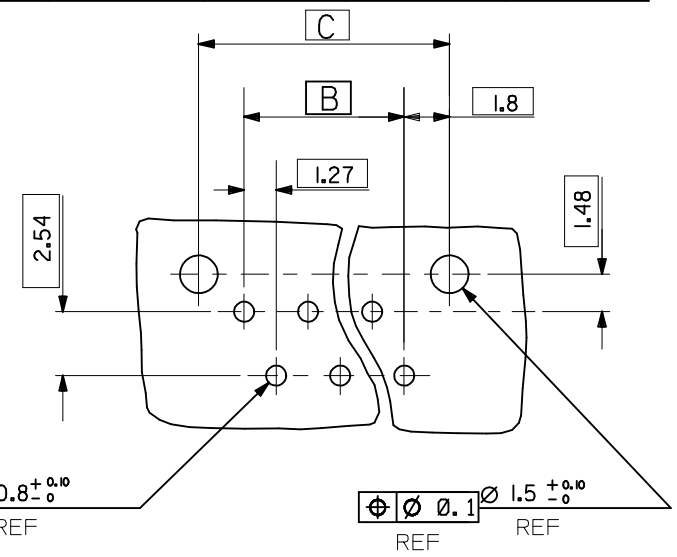
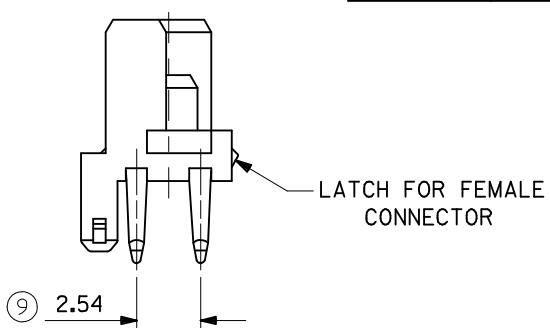
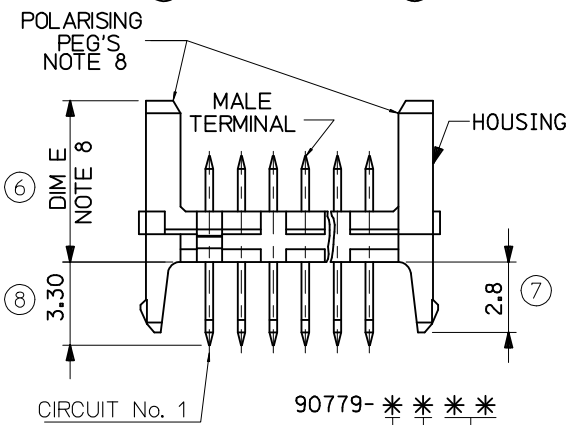


90779-***13	26	36.80	31.75	35.35	37.26
↑ -**12	24	34.26	29.21	32.81	34.72
-**11	22	31.72	26.67	30.27	32.18
-**10	20	29.18	24.13	27.73	29.64
-**08	18	26.64	21.59	25.19	27.10
-**07	16	24.10	19.05	22.65	24.56
-**06	14	21.56	16.51	20.11	22.02
-**05	12	19.02	13.97	17.57	19.48
-**04	10	16.48	11.43	15.03	16.94
-**03	8	13.94	8.89	12.49	14.40
↓ -**02	6	11.40	6.35	9.95	11.86
90779-***01	4	8.86	3.81	7.41	9.32
PART NO.	NO. OF CKTS	DIM. A	DIM. B	DIM. C	DIM. D



MOULD BASE COLOUR: NATURAL



PCB LAYOUT VIEWED FROM SOLDER SIDE. BOARD 1.60±0.14 THK

CIRCUIT No. 1 90779-***
 0 = 4-6µm TIN ASSY
 3 = 0.6µm PALLADIUM NICKEL ASSY
 7 = 0.6µm PALLADIUM NICKEL, TUBED
 9 = 4-6µm TIN ASSY TUBED
 0 - STANDARD
 9 - SHORT VERSION
 CIRCUIT SIZE 04CKT TO 26CKT -SEE TABLE ABOVE FOR PART CODE

- NOTES
- HOUSING, NYLON 46, GLASS FILLED UL 94 V-0, NATURAL (WHITE).
 - TERMINAL, BRASS
PLATING, TIN: 127 MICROMETRE MIN NICKEL UNDER 4-6 MICROMETRE TIN
PLATING PALLADIUM NICKEL (PdNi): 127 MICROMETRE MIN. NICKEL UNDER 3-5 MICROMETRE TIN SELECTIVE AND 0.6 MICROMETRE PdNi UNDER 0.05 MICROMETRE GOLD FLASH
 - APPLICATION CLASS TO DIN 40040 HME (-25°C/+100°C)
 - PIN PUSH FORCE 7N
 - TEST VOLTAGE: 750V.A.C./1 MIN
 - COMPATIBLE WITH MOLEX PART 90327
 - PRODUCT SPECIFICATION: PS-99020-0011
 - POLARISING PEG AVAILABLE IN 2 OPTIONS
DIM E: STANDARD 6.40mm
DIM E: SHORT VERSION 4.10mm
 - PACKAGING SPECIFICATION: PK-90325-002
- LAST INSPECTION NUMBER USED: 9

REMOVED GOLD OPTION ADDED PACKAGING SPEC EC NO: IPG2012-0576	DRW:DBYRMS 2012/03/22	QUALITY SYMBOLS
CHKD:SMCGREVV 2012/03/29	APPR:EFOLAN 2012/07/17	▽=0
		∇=0
REV	DESCRIPTION	

GENERAL TOLERANCES (UNLESS SPECIFIED)	
mm	INCH
4 PLACES ±---	±---
3 PLACES ±0.20	±---
2 PLACES ±0.20	±---
1 PLACE ±---	±---
ANGULAR ±---°	
DRAFT WHERE APPLICABLE MUST REMAIN WITHIN DIMENSIONS	

DIMENSION STYLE MM ONLY	
DRAWN BY	DATE
BGB	1992/08/21
CHECKED BY	DATE
DMORIARTY	2004/12/03
APPROVED BY	DATE
JDENNEHY	2004/12/03
MATERIAL NO.	
SEE CHART	
SIZE	A3

SCALE 5:1	DESIGN UNITS METRIC	THIRD ANGLE PROJECTION
TITLE HEADER ASSEMBLY		
MOLEX INCORPORATED		SHEET NO. 1 OF 1
DOCUMENT NO. SDA-90779		
THIS DRAWING CONTAINS INFORMATION THAT IS PROPRIETARY TO MOLEX INCORPORATED AND SHOULD NOT BE USED WITHOUT WRITTEN PERMISSION		