

Positive Tempco Thermistor Type PT72

ISO 9001:2000
CERTIFIED
TS-16949
CERTIFIED

1. Features

- Reduced size, light weight and small mounting area
- Quick thermal response
- Curie temperature: 70°C, 80°C, 100°C
- Marking: Black coating for 70°C Curie temperature
Brown coating for 80°C Curie temperature
Blue coating for 100°C Curie temperature

2. Dimensions

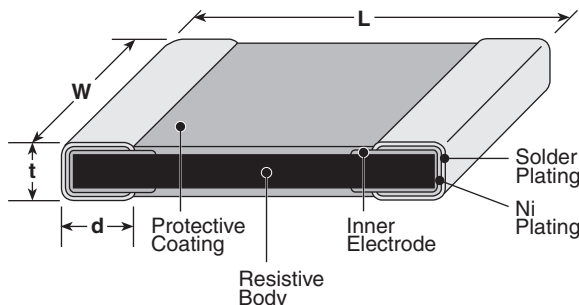
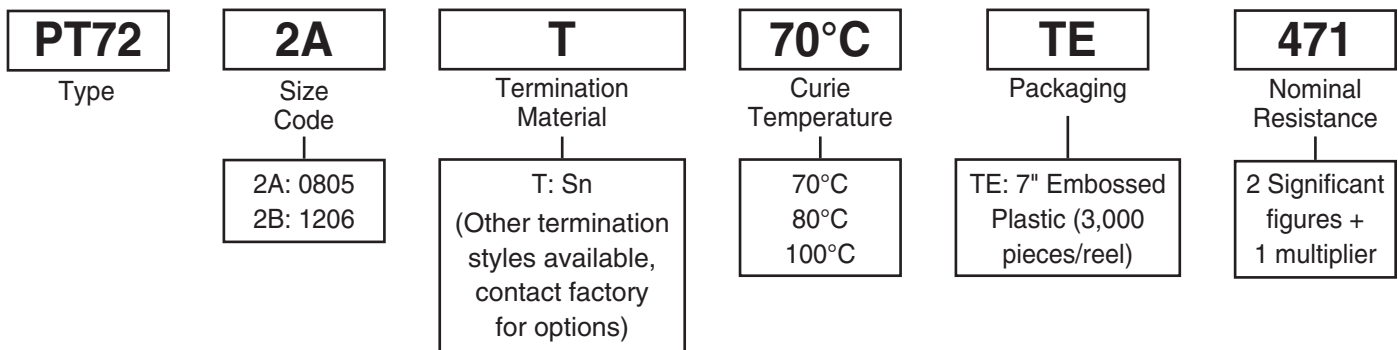


Table 1

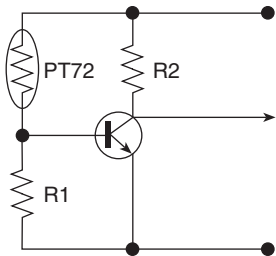
Dimensions - inches (mm)				
Type	L	W	t	d
2A (0805)	.079±.008 (2.0±0.2)	.049±.008 (1.25±0.2)	.039±.008 (1.0±0.2)	.016±.008 (0.4±0.2)
2B (1206)	.126±.008 (3.2±0.2)	.063±.008 (1.6±0.2)	.039±.008 (1.0±0.2)	.020±.012 (0.5±0.3)

3. Type Designation

Type designation shall be as the following form.



4. Typical Circuit Schematic

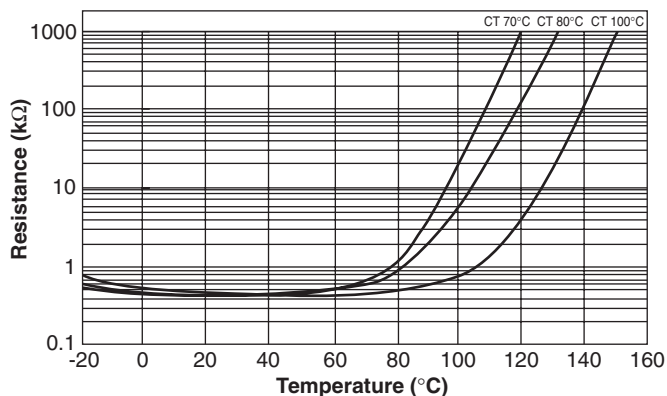


5. Applications and Ratings

Part Designation	Curie Temperature	Resistance @ 25°C	Resistance Tolerance	Temperature @ R ₂₅ x 7	Absolute Maximum Working Voltage	Operating Temperature Range
PT722A	70°C	470Ω	±50%	85°C ± 10°C	16V	-55°C to +125°C
	80°C			95°C ± 10°C		
	100°C			115°C ± 10°C		
PT722B	70°C	120Ω, 470Ω, 1kΩ		85°C ± 10°C		
	80°C	50Ω, 470Ω, 1kΩ		95°C ± 10°C		
	100°C	470Ω, 1kΩ		115°C ± 10°C		

6. Environmental Applications

6.1 Temperature Characteristics

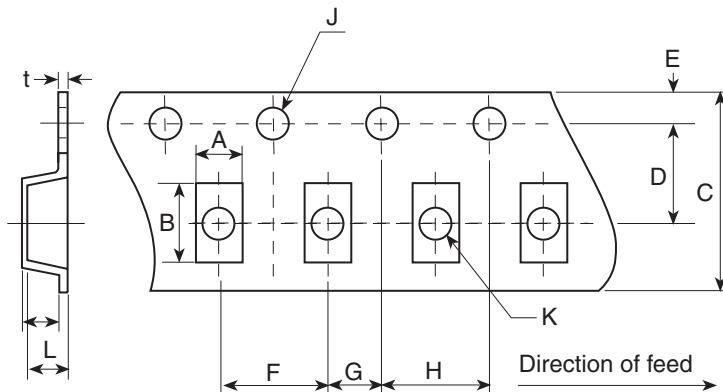


6.2 Performance Characteristics

Parameter	Requirement ΔR		Test Method
	Limit	Typical	
Resistance to Solder Heat	$\pm 20.0\%$	$\pm 4.0\%$	260°C \pm 5°C, 10 seconds \pm 1 second
Rapid Change of Temperature	$\pm 20.0\%$	$\pm 4.0\%$	-55°C (30 minutes), +125°C (30 minutes), 5 cycles
Resistance	$\pm 50.0\%$	$\pm 35.0\%$	25°C
Humidity Resistance	$\pm 20.0\%$	$\pm 4.0\%$	40°C \pm 2°C, 90 - 95% RH, 1000 hours
Load Life	$\pm 5.0\%$	$\pm 4.0\%$	25°C \pm 2°C, 1000 hours, rated voltage

7. Packaging Specifications

7.1 Dimensions of Plastic Tape



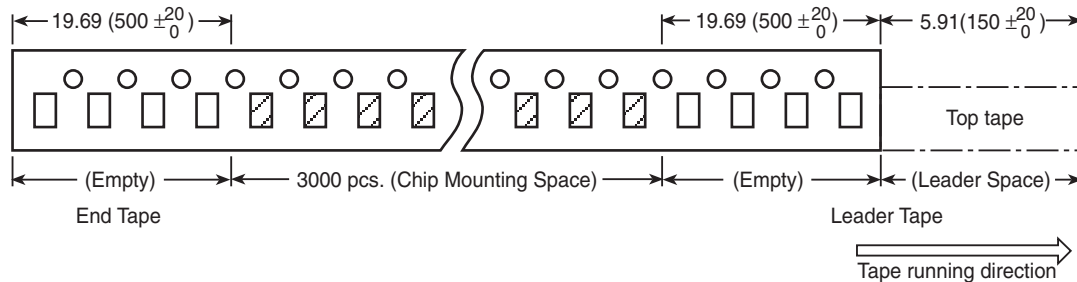
Dimensions in inches (mm)

Series	A	B	C	D	E	F
2A	0.057 \pm 0.004 (1.45 \pm 0.1)	0.089 \pm 0.004 (2.25 \pm 0.1)	0.315 \pm 0.008 (8.0 \pm 0.2)	0.138 \pm 0.002 (3.5 \pm 0.05)	0.069 \pm 0.004 (1.75 \pm 0.1)	0.157 \pm 0.004 (4.0 \pm 0.1)
2B	0.075 \pm 0.004 (1.9 \pm 0.1)	0.138 \pm 0.004 (3.5 \pm 0.1)	0.315 \pm 0.008 (8.0 \pm 0.2)	0.138 \pm 0.002 (3.5 \pm 0.05)	0.069 \pm 0.004 (1.75 \pm 0.1)	0.157 \pm 0.004 (4.0 \pm 0.1)

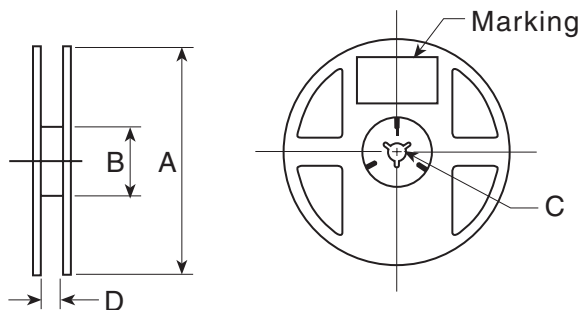
Series	G	H	J	K	L	t
2A	0.079 \pm 0.002 (2.0 \pm 0.05)	0.157 \pm 0.004 (4.0 \pm 0.1)	0.059 \pm $\begin{smallmatrix} 0.004 \\ 0 \\ 0 \end{smallmatrix}$ (1.5 \pm $\begin{smallmatrix} 0.1 \\ 0 \\ 0 \end{smallmatrix}$)	0.039 \pm $\begin{smallmatrix} 0.008 \\ 0 \\ 0 \end{smallmatrix}$ (1.0 \pm $\begin{smallmatrix} 0.2 \\ 0 \\ 0 \end{smallmatrix}$)	0.049 \pm 0.004 (1.25 \pm 0.1)	0.01 \pm 0.002 (0.25 \pm 0.05)
2B	0.079 \pm 0.002 (2.0 \pm 0.05)	0.157 \pm 0.004 (4.0 \pm 0.1)	0.059 \pm $\begin{smallmatrix} 0.004 \\ 0 \\ 0 \end{smallmatrix}$ (1.5 \pm $\begin{smallmatrix} 0.1 \\ 0 \\ 0 \end{smallmatrix}$)	0.039 \pm $\begin{smallmatrix} 0.008 \\ 0 \\ 0 \end{smallmatrix}$ (1.0 \pm $\begin{smallmatrix} 0.2 \\ 0 \\ 0 \end{smallmatrix}$)	0.049 \pm 0.004 (1.25 \pm 0.1)	0.01 \pm 0.002 (0.25 \pm 0.05)

7. Packaging Specifications (Continued)

7.2 Leader and End Tape



7.3 Reel specifications for taping



Dimensions in inches (mm)

Series	A	B	C	D	Material
PT72	7.01 ± 0.079 (178 ± 2)	2.36 ± 0.079 (60 ± 2)	0.512 ± 0.020 (13 ± 0.5)	0.354 ± 0.059 (9 ± 1.5)	Plastic